

POSITIONING TECHNOLOGY

Product Catalogue



Brandt Positioning Technology

More than ever before, having the right tools is critical to remaining competitive in the construction industry. Brandt Positioning Technology is the knowledgeable and experienced end-to-end positioning technology partner that keeps you on the cutting edge. We sell and support the broadest range of products and services—from bid to completion—in the industry; going above and beyond to keep you productive, profitable and competitive.

That's Powerful Value. Delivered.



Contents

SUPPLIES & ACCESSORIES

- 5 Reflective Targets
- 6 Prisms
- 7 Specialty Prisms
- 8 Builder Series Prism Poles
- 9 Prism Pole Bipods & Tripods
- 10 PRO Series Prism Poles
- 11 Specialty Poles
- 12 Levelling Rods
- 13 Tripods & Accessories
- 14 Tribrachs & Adapters
- 15 Sokkia/Eslon™ Measuring Tapes
- 16 Field Books
- 18 Bags & Carrying Cases
- 19 Flagging
- 20 Plumb Bobs
- 21 Hand Tools
- 21 Marking
- 22 Paint
- 23 Safety and Common Accessories

GEO-POSITIONING EQUIPMENT

- 27 Topcon Geo-Positioning Content
- 30 Machine Control
- 33 Software
- 34 Aerial Products & Scanners
- 36 Brandt Technology Integration Services

Supplies & Accessories

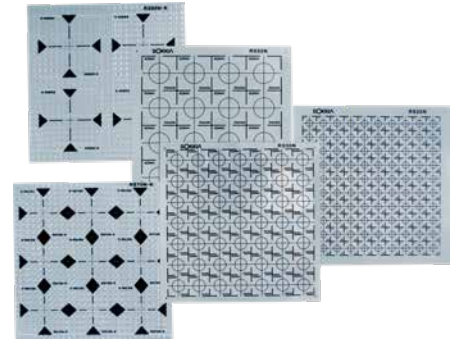


Reflective Targets

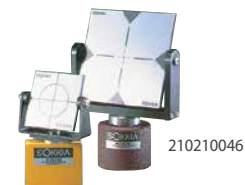
● Reflective Sheet Targets

RS**T 0.3 mm thin, self-adhesive sheets that adhere to almost any surface. RS**N includes normal (0.5 mm) reticle lines.

210210004	RS00 Target 230 x 230 mm (1 each) (SO)
210210005	RS05T Targets 5 x 5 mm (400 each) (SO)
210210006	RS10N Targets 10 x 10 mm (400 each)
210210009	RS10T Targets 10 x 10 mm (400 each)
210210010	RS15N Targets 15 x 15 mm (196 each) (SO)
210210013	RS15T Targets 15 x 15 mm (196 each) (SO)
210210018-SURSK	RS20N Reflective Sheet Target 20 x 20 mm (0.79 x 0.79 in.) (100/Sheet)
210210019	RS20T Targets 20 x 20 mm (100 each) (SO)
210210026	RS30N Targets 30 x 30 mm (49 each)
210210029	RS30T Targets 30 x 30 mm (49 each) (SO)
210210035-SURSK	RS50N Reflective Sheet Targets 50 x 50 mm (1.96 x 1.96 in.) (16/sheet)
210210037-SURSK	RS70N Reflective Sheet Targets 70 x 70 mm (2.75 x 2.75 in.) (9/sheet)
210210040	RS90N-K Targets 90 x 90 mm (4 each) (SO)
210210041-SURSK	RS90N Reflective Sheet Targets 90 x 90 mm (3.54 x 3.54 in.) (4/sheet)



210210004–210210041



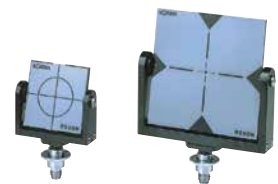
210210046

634412

● Specialty Targets

Easy-to-use reflective targets supplied on adhesive-backed sheets; can be directly affixed to measuring points. For alternative needs, rotary targets and a 2-point target are also available.

210210046	RT50M Magnetic Target
634412	RT90M Rotary Target (SO)
210210045	RT50G10 Rotary Target (SO)
210210049	RT90G10 Rotary Target (SO)
210210002	RC50 Reflective Target 73 x 73 mm (SO)
210210187	2RT500 Reflective Target Set
210160218	RTSO S-K Pin-Pole Reflective Target



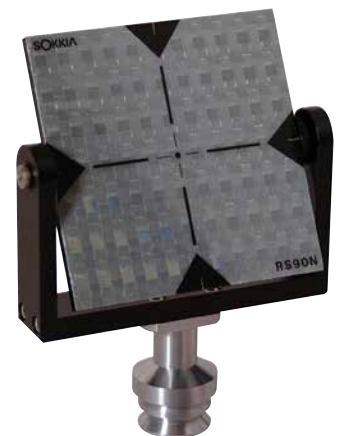
210210045

210210049

● Detachable Rotary Target

The RT90C can be mounted on a tribrach with the AP41 adapter or mounted directly to prism pole.

210160170	RT90C 360° Rotating Sheet Target
------------------	----------------------------------



Prisms

● 360° Robotic Total Station Prisms

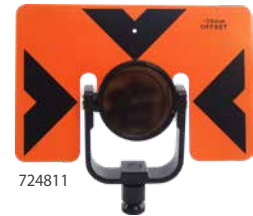
1004684-01	Builder Series 360° Prism
210150005	ATP1 360° Prism with protective prism cover and end cap



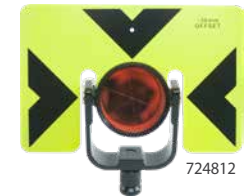
● Rear Locking Builder Series - 6 x 9

This prism assembly allows the user to quickly adjust the tilting target from behind the prism as it is pointing at the instrument to allow accurate sighting. The targets are 6 x 9 in. and available in either florescent orange or yellow. The prism can be either mounted in a 0 or -30 mm offset position. All come with a protective carry case for the target or complete system.

724811	Tilting Prism Assembly with 6 x 9 in. Target, Florescent Orange (Copper Coated Prism)
724812	Tilting Prism Assembly with 6 x 9 in. Target, Florescent Yellow (Copper Coated Prism)



724811



724812

● Rear Locking Builder Series - 5 x 7

This prism assembly allows the user to quickly adjust the tilting target from behind the prism as it is pointing to the instrument to allow accurate sighting. The targets are 5 1/2 x 7 in. and are available in either florescent orange or yellow. The prism can be either mounted in a 0 or -30 mm offset position. All come with a protective carry case for the target or complete system.

60857	Economy Tilting Prism Assembly with 5 1/2 x 7 in. Target, Florescent Orange
724808	Economy Tilting Prism Assembly with 5 1/2 x 7 in. Target, Florescent Yellow



60857



724808

Specialty Prisms

● Builder Series Mini Prisms

System contains a copper coated 25 mm prism, a tilting holder that has either a side-mounted or center vial. The prism can be either mounted in a 0 or -30 mm offset position. Kit comes with two adapters, plumb bob holder and padded carrying case with a belt loop.

724861 Mini Prism System with Non-Adjustable Center Vial

724862 Mini Prism System with Non-Adjustable Side Vial



● Pin Pole with Sliding 25 mm Prism System

System includes a 25 mm silver coated prism, three 60 cm length pole sections – in red and white 10 cm stripes (total length is 1.8 m/5.9 ft.). The prism can be mounted in a 0 mm offset position. The kit also comes with a padded carrying case and a plumb bob hook, and cap for prism to use as an offset prism by itself.

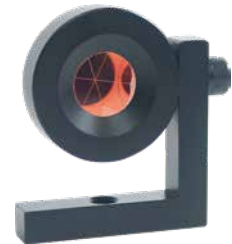
724870 Mini Prism System Kit with Pin Pole



● Monitoring Prism

25 mm specialty prism that can be mounted to a range of different surfaces and used in many different environments.

724814 90° L-Bar Monitoring Prism



Builder Series Prism Poles

● Compression/Collet Lock Prism Poles

The Sokkia compression lock prism pole offers a secure locking system with a polished aluminum pole with a brass lock. The pole is red and white offered in three sizes with an adjustable tip and dual graduations. Also included with each pole is a carrying case.

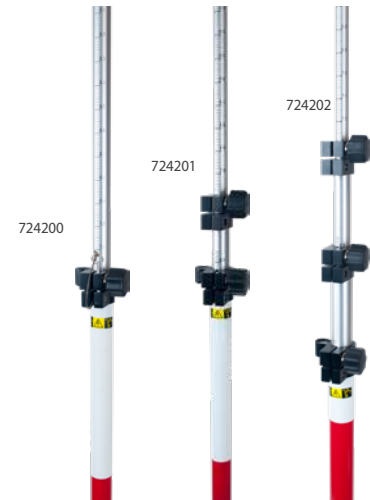
51780-SURSK	8.5 ft. Compression Lock Prism Pole – Adjustable Tip (Dual Graduations)
724207	12 ft. Compression Lock Prism Pole – Adjustable Tip (Dual Graduations)
724208	15 ft. Compression Lock Prism Pole – Adjustable Tip (Dual Graduations)



● Sokkia Knob-Lock Prism Poles

The Sokkia knob-lock prism pole is easy to tighten and release with its large adjustable knob. The pole is red and white offered in three sizes with an adjustable tip and dual graduations. Also included with each pole is a carrying case.

724200	8.5 ft. Knob Lock Prism Pole – Comes with holes for locking your height setting and Adjustable Tip (Dual Graduations)
724201	12 ft. Knob Lock Prism Pole – Adjustable Tip (Dual Graduations)
724202	15 ft. Knob Lock Prism Pole – Adjustable Tip (Dual Graduations)



● Sokkia Quick-Release Prism Poles

The Sokkia quick-release handle lock prism pole allows for quick adjustments to prism heights. The pole is red and white offered in three sizes with an adjustable tip and dual graduations. Also included with each pole is a carrying case.

51773-SURSK	8.5 ft. Quick Release Lever Lock Prism Pole – Adjustable Tip (Dual Graduations)
724204	12 ft. Quick Release Lever Lock Prism Pole – Adjustable Tip (Dual Graduations)
724205	15 ft. Quick Release Lever Lock Prism Pole – Adjustable Tip (Dual Graduations)



Prism Pole Bipods & Tripods

● Builder Series Bipod

Builder series bipod assembly is designed for quick setup and field durability. These models are come with a carrying case to protect them. Bipods come with leg clip included as well.

724897	Economy Prism Pole Bipod Red
724898	Economy Mini Prism Pole Bipod Red
1009273-01	Carbon Fiber Prism Pole Bipod



● Prism Pole Accessories

808850	Universal Replacement Point (Prism Pole, Bipod, and Range Pole)
808851	Topographic Shoe Regular
808852	Topographic Shoe Wide Base
808853	5/8 x 11 Adjustable Precise Tip - Fine (Compatible with Pro Series and Robotic Poles)



● Mini Stake-Out Poles

Available in Economy or Pro-Series. Measures 15 in. (1.29 ft.) with point (1 ft. rod section).

724242	Economy Mini Stake-Out Pole Red with Carrying Bag
808042	Mini Stake-Out Pole Red (no carrying case)
808043	5.1 ft. / 2.7 m Pro Series Aluminum Knob Lock Mini Pole



● Data Collector Brackets

Pro Series Crush Proof 1.25 in. Pole Claw Clamp with Pro Series Cradle.

- Crush proof style pole clamp and cradle with a push button quick release
- 1.25 in. pole clamp capacity
- 20 different angles snap-in adjustment with 2 hardened stainless steel lock pins
- Anti-slip diamond knurled lock knobs
- Constructed of aircraft grade 6061-T6 billet aluminum
- Black anodize finish with high tech laser engraving
- Made in the USA

1000183-01	4 Screw Pole Mount for Tesla
1003045-05	Claw Clamp & Cradle for FC-500
1015317-01	Claw Clamp & Cradle for FC-5000
808156	Claw Clamp and Cradle for SHC250

PRO Series Prism Poles

● Pro Series Lever Lock Prism Poles

- User friendly lever lock mechanism
- One hand operation
- Precision CNC marked graduations won't fade or rub off
- Heavy duty aluminum construction with electrostatic epoxy powder coat finish
- 40 minute top-adjust vial bubble level
- Fine threaded precise tip allows for precision height adjustment
- Stainless steel tip points, ultra light weight corrosion resistant hybrid design
- Available in red/white bands
- Lightweight

727066	8.5 ft. Pro Series Aluminum Lever Lock Prism Pole, Dual Graduations
---------------	---



● Pro Series Knob Lock Prism Poles

- User friendly lever lock mechanism
- One hand operation
- Slip resistant molded rubber knob
- Precision CNC marked graduations won't fade or rub off
- Heavy duty aluminum construction with electrostatic epoxy powder coat finish
- 40 minute top-adjust vial bubble level
- Fine threaded precise tip allows for precision height adjustment
- Stainless steel tip points, ultra light weight corrosion resistant hybrid design
- Available in red/white bands
- Lightweight

808200	8.5 ft. Pro Series Aluminum Knob Lock Prism Pole, Dual Graduations
808201	12 ft. Pro Series Aluminum Knob Lock Prism Pole, Dual Graduations
808202	15 ft. Pro Series Aluminum Knob Lock Prism Pole, Dual Graduations
808204	3.6 m Pro Series Aluminum Knob Lock Prism Pole, Metric



Specialty Poles

● Robotic Poles

The Sokkia robotic poles all feature all of the benefits of the “Pro Series” line of product. The poles are available in both aluminum and carbon fiber. The robotic poles have a D-shape pole to keep it from twisting and always aligned for use with the RC unit. 727071 is the standard Robotic Prism Pole sold with the RC-PR5/SX system.

727070	12 ft. Aluminum Prism Pole for RC-PR3 (Dual Grads - Feet / Tenths and Metric)
727071	8 ft. Aluminum Lever Lock Prism Pole for RC-PR4/5, Feet
727074	8 ft. Carbon Fiber Lever Lock Prism Pole for RC-PR4/5, Feet
727075	8.5 ft. Carbon Fiber Lever Lock Prism Pole for RC-PR4/5, Meters



● GPS Poles

The Sokkia GPS pole lineup features a wide variety of styles. Choose from adjustable height to 2 m fixed height. Also available is a pole with anti-crush feature, so your data collector clamp will not compromise the pole.

808015	2.5 m GPS Adjustable Rover Pole, Knob Lock – Dual Graduations
808016	2 m Rover Pole, Carbon Fiber, 2 section
808017	Snap Lock GPS Pole, Carbon Fiber
808018	2 m Snap Lock GPS Rover Rod
808019	2 m Snap Lock GPS Rover Rod, Aluminum
808090	2 m GPS Anti-Crush Aluminum Rover Rod, 2 Section - Sokkia Green
724290	2 m Economy GPS Aluminum Rover Rod, 2 Section - Sokkia Green with carrying case
724291	2 m Economy GPS Carbon Fiber Rover Rod, 2 Section with carrying case
VPP05C	Composite GPS pole, 2m, 2 sections



● GPS Pole Accessories

Quick Release assembly for removal of GNSS receivers or antennas. Uses 5/8 x 11 in. threading, compatible with nearly every GNSS product.

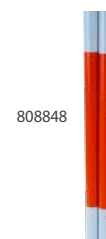
808047	GPS Quick Release Assembly (top and bottom)
808048	GPS Quick Release Top (antenna mount)
808049	GPS Quick Release Bottom (pole mount)



● Heavy-Duty Range Poles

Alternating 12 in. color sections orange and white.

808849	4 ft. Range Pole Section
808848	8 ft. Range Pole 2 Sections with Point
808847	12 ft. Range Pole 3 Sections with Point



Specialty Poles / Levelling Rods

● Pole Peg Adjusting Jig

This simple bracket allows you to adjust and calibrate pole vials in your office. The adjusting jig features a simple L-bracket to set the pole point into and a knob adjusting top to center the pole vial prior to adjusting the bubble.



724301	Pole Peg Adjusting Jig
---------------	------------------------

Levelling Rods

● ValPar Levelling Rods

VAR16M	5M aluminum rod, E Block/MM 5 Sections
VAR5M-E	NAR5M/E 5 Meter aluminum, Metric/8th, 5 section
VXR25M	7 Meter oval surveyors fiberglass rod, E Block/mm
VAR5M-T	NAR5M/M 5 Meter aluminum, .5 cm/mm, 5 section



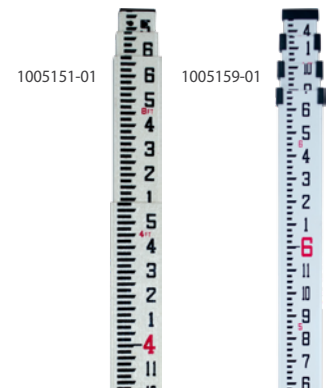
● Builder Series Level Rods

Fiberglass Rods

1005149-01	13 ft. Builder Fiberglass Rod, inches
1005150-01	13 ft. Builder Fiberglass Rod, tenths
1005151-01	16 ft. Builder Fiberglass Rod, inches
1005152-01	16 ft. Builder Fiberglass Rod, tenths
1005153-01	20 ft. Builder Fiberglass Rod, inches
1005154-01	20 ft. Builder Fiberglass Rod, tenths
1005155-01	25 ft. Builder Fiberglass Rod, inches
1005156-01	25 ft. Builder Fiberglass Rod, tenths

Aluminum Rods

1005157-01	13 ft. Builder Aluminum Rod, inches
1005158-01	13 ft. Builder Aluminum Rod, tenths
1005159-01	16 ft. Builder Aluminum Rod, inches
1005160-01	16 ft. Builder Aluminum Rod, tenths



Tripods & Accessories

● ValPar Tripods

VAT91	Heavy Duty aluminum, Flat Head Quick Clamp
VAT96	Heavy Duty with elevator column
VWFT100A	Wood/fiberglass (DUAL Clamp) wing nut and Quick Clamp

● Builder Series Tripods

724645	Aluminum Tripod Medium Weight Quick Clamp Height: 38" min / 63" max / 42" closed, 5/8 x 11 Head
724251	Fiberglass Tripod with Dual Clamp Height: 42" min / 70" max / 45" closed, 5/8 x 11 Head

● Elevating Tripods

809550	Medium Duty Elevating Tripod Height: 44" min / 93" max / 48" closed, Weight: 12 lb
---------------	---

● Tripod Stabilizer

Designed to provide stability when working indoors on concrete and other hard surfaces. Made of heavy-duty aluminum and collapses for compact storage. Comes with rubber O-rings that fit over the feet of the tripod for extra security.

808903	Tripod Stabilizer
---------------	-------------------



Tribrachs & Adapters

● Tribrach Adapters

Adapter accepts all mount and target assemblies; has 60 second level vial for accurate leveling and centering that's adjustable to match height of optical axis above the tribrach.

22-006009-01	Tribrach Adapter Fixed Mounting adaptor for GPS, prisms and target systems with most tribrachs 5/8 x 11 center stud.
51842	Tribrach Adapter with Removable Centre Adapts GPS, prisms and target systems to most tribrachs – has removable center plug with 5/8 x 11 threads and locking screw. Removable center available as a replacement separately.

The following models include a 5/8 x 11 male thread for attaching GPS, prisms and target systems. Threaded portion attached to rotating plate for easy aiming. Plate has knurled edge and friction stop.

724042	Tribrach Adapter friction rotatable
210160016	AP41 Optical plummet adapter twith vial and adjustable height
NAD11	Tribrach without optical plummet

Designed to provide stability when working indoors on concrete and other hard surfaces. Made of heavy-duty aluminum and collapses for compact storage. Comes with rubber O-rings that fit over the feet of the tripod for extra security.

NTB11	Tribrach with optical plummet
--------------	-------------------------------



22-006009-01



51842



724042



NAD11



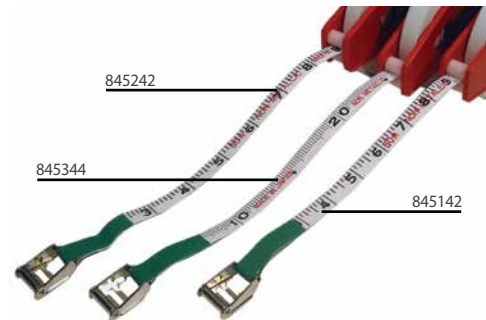
NTB11

Sokkia/Eslon™ Measuring Tapes

● Sokkia/Eslon Fiberglass Open-Reel Tapes (1/2 inch wide)

Lightweight case is virtually shatterproof. The special handle design makes reeling quick. Width 1/2 in., with folding metal end hook.

Item No.	Refill No.	Length
Printed on one side. Graduated in ft./in./8ths.		
845144	845164	100 ft.
845146	n/a	200 ft.
845148	n/a	300 ft.
Printed on both sides. One side graduated in ft./in./8ths, other side m/cm/2 mm.		
845444	845464	100 ft./30 m
845445	n/a	165 ft./50 m
Printed on one side. Graduated in ft./10ths/100ths.		
845244	845264	100 ft.
845245	845265	165 ft.
845246	845266	200 ft.
Printed on both sides. One side graduated in ft./10ths/100ths, other side m/cm/2 mm.		
845542	n/a	50 ft./15 m
845544	845564	100 ft./30 m
845545	845565	165 ft./50 m
Printed on one side. Graduated in m/cm/2 mm.		
845344	845364	30 m
845346	n/a	60 m
845348	845368	100 m



● Sokkia/Eslon Fiberglass Appraiser's Tapes

These long-lasting tapes have special hook ends to assure accuracy.

Item No.	Refill No.	Length
Printed on one side. Graduated in ft./in./8ths.		
845174	845174	100 ft.
Printed on one side. Graduated in ft./10ths/100ths.		
845274	845284	100 ft.



● Sokkia/Eslon Warranty

Sokkia/Eslon tapes are covered by a 90 day warranty. If your Sokkia/Eslon tape breaks or if it is defective, Sokkia Corporation will replace it at no charge for up to 90 days from the original date of purchase. This warranty also covers defective or broken tape reels and cases. Details are supplied with tapes.

Field Books

Field Books

Left page with blue horizontal lines and red vertical lines
Right page with 4 squares per inch and red vertical line

815260 Field Book (41/2 x 71/4 in.)

Both pages with 10 squares per inch with inch lines slightly heavier

815275 Cross-Section Book (61/2 x 81/2 in.)

Both pages with blue horizontal lines and red vertical lines
Six vertical columns per page

815250 Level Book (4 x 61/2 in.)

Both pages with blue horizontal lines and red vertical lines
Six vertical columns per page

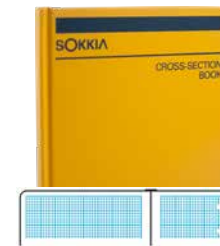
815255 Level Book (41/2 x 71/4 in.)

Loose-Leaf Sheets: Single sheets: 50 singles per package, 12 packages per carton,
sold by the package

815350 Level Book Single Sheets (pkg 50)



815250



815275

Rite-In-The-Rain Weatherproof Field Books

80 leaves, ruled 8 vertical lines per inch, covered in yellow poly. Size: 45/8 x 7 in.

815400 Transit Book #300

80 leaves, ruled 6 vertical columns per page, covered in yellow poly. Size: 45/8 x 7 in.

815405 Level Book #310

Loose-Leaf Sheets - 100 loose-leaf sheets per packs

815410 Transit Book Sheets #302 (same layout as 815260)

815415 Level Book Sheets #312 (same layout as 815250)



815260

High-Visibility Buckram Binders

Buckram-covered stiff board construction-lined with black paper. Six-ring style.

815370 50-page capacity binder with 1/2 in. rings. Size: 51/2 x 73/4 in.

815375 100-page capacity binder with 3/4 in. rings. Size: 51/2 x 73/4 in.



815370

Field Books (CONTINUED)

● Transit / Economy Field Books

Left page level ruled

Right page with 8 vertical and 4 horizontal blue lines and red vertical center line

815200 Transit Field Book (4 1/2 x 7 1/4 in.)

Loose-Leaf Sheets: Single sheets: 50 singles per package, 12 packages per carton, sold by the package

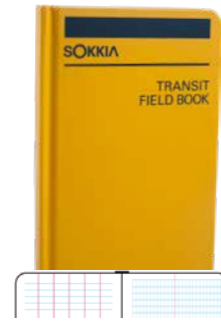
815300 Transit Book Single Sheets (pkg 50)

Heavy paper cover, spiral bound and 36 pages

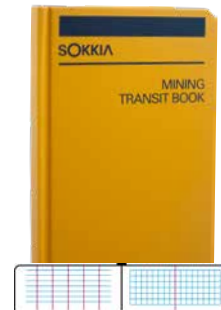
815205 Level Book (4 x 6 1/2 in.)

Heavy paper cover, saddle stitched (stapled) and 32 pages

815210 Economy Field Book



815200



815220



815230

● Specialty Field Books

Left page level ruled, right page with 8 squares per inch and red vertical center line

815220 Mining Transit Book (4 1/2 x 7 1/4 in.)

Left page level ruled, right page with 10 squares per inch, red vertical center line and heavy inch lines

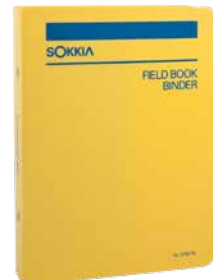
815230 Engineer's Field Book (4 3/4 x 7 3/4 in.)

● High-Visibility Polyethylene Binders

One-piece, 55-gauge single-piece cover resists dirt and withstands tough weather. Six-ring style.

815378 100-page capacity with 3/4 in. rings. Size: 5 1/2 x 7 3/4 in.

815379 50-page capacity with 1/2 in. rings. Size: 5 3/4 x 7 3/4 in.



815378

Bags and Carrying Cases

Stake Bags

Sokkia Heavy-Duty Stake Bag made from durable orange material and made to carry 18 in. or 24 in. stakes. These bags are made with a drain hole and an adjustable carrying strap.

801055	Heavy-Duty Stake Bag 18 in.
801056	Heavy-Duty Stake Bag 24 in.



Lath Bags

Sokkia Heavy-Duty Lath Bag made from durable orange material and made to carry 36 in. or 48 in. lath. These bags have an adjustable carrying strap.

801065	Heavy-Duty Lath Bag 36 in.
801066	Heavy-Duty Lath Bag 48 in.



Carry-All Case

Sokkia Heavy-Duty Carry all bag will allow you to carry a full size wood tripod and also include an 8 ft. prism pole.

801080	Heavy-Duty Accessory Carry-All Case - 58 x 91/4 in. (l x d)
---------------	---



Prism Bags

Sokkia Heavy-Duty Prism bags that are padded with thick dense foam and the exterior is made from durable orange material.

801070	Heavy-Duty Single Prism Bag, Interior Dimensions - 12 x 10 x 4 in. (w x l x d)
801071	Heavy-Duty Prism System Bag, Interior Dimensions - 12 x 18 x 5 in. (w x l x d)

Data Collector Cases

Sokkia Data Collector Carrying Cases

559314	S-10 / SHC25 Carrying Case
559316	Mesa Carrying Case
60958	Archer2 / SHC250 Carrying case
804903	Universal Data Collector Case



Flagging

● Presco "Arctic" Flagging

Excellent durability, performance, and temperature resistance down to -40°F. Packed one dozen to a box; sold by the box. 3 mm for standard colors, 5 mm for florescent colors. Note: Colors cannot be assorted within the box.

152-PSCA__ Florescent 150 ft. roll. Specify color with last two digits:
 -BL Blue Glo, -L LimeGlo, -OG Orange Glo, -P Pink Glo, -R Red Glo, -Y Yellow Glo.



152-PSCA__

● Stake Flags

Vinyl flags securely attached to stiff steel wire stakes. Packed 100 to a bundle with 10 bundles per box. Sold by the box. Order in increments of 10.

8108__ Small Flags (21/2 x 31/2 in.) – 21 in. stakes. Specify color with last two digits:
 -00 Pink Glo, -01 Orange Glo, -03 Yellow, -06 White

8109__ Small Flags (21/2 x 31/2 in.) – 30 in. stakes. Specify color with last two digits:
 -00 Pink Glo, -01 Orange Glo, -03 Yellow, -04 Red, -06 White

0802__ Large Flags (4 x 5 in.) – 21 in. stakes. Specify color with last two digits:
 -11 Blue, -12 White, -13 Red, -14 Blue Glo, -15 Yellow, -16 Orange Glo,
 -17 Pink Glo, -18 Yellow Glo, -19 Red Glo, 099992 Orange

0803__ Large Flags (4 x 5 in.) – 30 in. stakes. Specify colors with last two digits:
 -01 Blue, -02 Orange Glo, -03 Red, -04 White, -05 Yellow, -06 Blue Glo, -07 Pink Glo, -08
 Lime Glo, -09 Red Glo, -16 Yellow Glo, -24 Orange, 080298 Green, 099071 Green Glo.

8113__ Large Flags (4 x 5 in.) – 36 in. stakes. Specify colors with last two digit:
 -00 Pink Glo, -01 Orange Glo, -02 Blue, -03 Yellow



● Flagging Tape Dispenser

Lightweight, rustproof and fits on a belt or waistband. Holds one roll.

811010 Flagging Dispenser



Plumb Bobs

Plumb Bobs

Screw caps and hardened steel points with standard threads. Storage space for an extra point inside the cap.

812212/14/15/18/24	Plumb Bob, 12 oz.(12), 14 oz.(14), 16 oz.(16), 18 oz.(18), 24 oz.(24)
812290	Extra Point (fits all listed plumb bobs)
812293	Extra Cap (fits all listed plumb bobs)



812214

Plumb Bob Cords

Made with the finest quality braided cord.

812413	White Poly; 50 yd. Spool
812423	Orange Poly, 50 yd. Spool
812439	Flourescent Yellow Poly, 50 yd. Spool
812440	Flourescent Red Poly, 50 yd. Spool



812440

Leather Scabbards

Rugged leather with stitched and riveted pockets that hold tape or Gammon Reel and a 16 or 18 oz. plumb bob.

812365	Leather Scabbard for Gammon reel and Plumb Bob
Extra-heavy stitched and riveted pocket.	
812350	Belt for Plumb Bob Scabbard
812315/25/35	Scabbard for Plumb Bobs, 10-14 oz.(15), 16-18 oz.(25), 24-32 oz.(35)



812365

812325

Tally Register

Four-digit capacity with quick return to zero.

879200	Tally Register
---------------	----------------



Gammon Reels

Handy, retracting plumb bob cord reel means no more winding and no more broken or muddy string. Includes 72 lb test nylon string that weighs 1 1/2 oz.

812448/49	12 ft. Gammon Reel, Black/Orange(48) , White/Orange(49)
812450	6.5 ft. Gammon Reel, White/Orange
812451/52/54	24 yd. Nylon Refill, Red/Orange(51), Flourescent Yellow(52), Flourescent Red(54)



812450

812448

Targets

Available in "Quick-Stik", plastic, and translucent plastic variations.

812620	Plastic target notched for attaching to line 2½ x 4 in., Red/White
812625	Translucent Plastic target laminated for brilliant illumination and notched for attaching to line 2½ x 4 in., Black/Orange
812640	Quik-Stik target with paper back that peels off instantly and sticks to any surface 2 x 3½ in. (package of 25)



812620

Hand Tools/Marking

● Machetes

813000	Seymour® 22 in. Machete
813001	Leather Sheath for 22 in. Machete
813002	Canvas Sheath for 22 in. Machete



● Frost Pins

813079	REDTOP Frost Pin: 1 in. Diameter, 13/4 in. Button Top, 18 in. Long, 4 lbs.
--------	--



Marking

● Dixon Redimark® Marker

Tight-seal, no-roll cap makes marker last longer; stores on base when not in use. Chisel point is ideal for marking on wood, metal, glass, plastic, or paper. Aluminum body gives 30% more volume. Sold by the dozen.

813471	Black Dixon Felt Tip Marker
813472	Red Dixon Felt Tip Marker



● Dixon® Lumber Crayons

For marking steel, concrete, stone, lumber and almost any other surface. Length: 4 1/2 in.; diameter: 1/2 in. Packed 12 per box; sold by the box.

813461	Carbon Black Crayon
813462	Yellow Crayon
813463	Red Crayon
813464	Fluorescent Pink Crayon
813465	Blue Crayon
813467	White Crayon



Paint

● Aervoe Marking Paint (17 oz.)

- Aervoe's Survey Marking Paint offers the best in color visibility and retention, durability, and a lasting mark of up to six months
- Non-freezing and operational to 14°F
- Colors are formulated to meet standards set by OSHA and APWA/One Call Systems
- Mark is visible for up to six months depending on traffic and exposure
- Adheres to many surfaces including wood, concrete, asphalt, brick and gravel
- Not recommended for use on turf surfaces

152____ -0015 White, -0016 Purple, -0017 Red, -0018 Orange, -0019 Green, -0020 Yellow, -0021 Blue, -0022 Pink, 0023 Clear Coat

● Spray Paint Marking Wand

Lightweight durable steel and plastic construction with a comfortable grip for easy marking.

813958 Marking Wand, 24 in. Handle

● Spray Paint Marking Pistol

Use with marking paints for increased accuracy and no mess. Light touch spray control. Easy loading.

813959 Marking Pistol



Safety and Common Accessories

● Hard Hats

High-density polymer for excellent protection against severe impact. Molded in one piece with no metal; protects against corrosive materials. Meets ANSI Z89. 1-196 (Class A) — Federal Spec GGG-H-14t2g. Fits sizes 6 3/8 through 8. Weight: 11 oz.

813630	Yellow
813631	White

813630



● Surveyor's Umbrella

63 in. spread and 8 ft., 3-section pole with baked aluminum enamel finish.

813640	Heavy-drill fabric umbrella; blue and yellow
813641	Water resistant vinyl umbrella; yellow with blue logo
813642	Replacement Pole for 813640/813641, diameter 1 1/4 in. (SO)



813640

● First Aid Kits

The jobsite kit is designed to serve most minor first aid issues for up to 25 people. The truck kit is designed for up to 10 people.

813094	First Aid Kit (Truck)
813095	First Aid Kit (Jobsite)



813094

● Common Sokkia Cables - Batteries - Chargers

14-008016-03	SAE-ODU Cable
14-008022-01	SAE-SAE Extension Cable
14-008025-01	SAE to Alligator Clip Cable
02-850901-02	GR5 Battery
1006555-01	Hiper HR Battery
221007000	Hiper V / ES / PS / DS / GT Battery

Safety and Common Accessories

● Traffic Cones

High-intensity fluorescent red-orange PVC cone with weighted base for stability.

813612	12 in. Traffic Cone
813618	18 in. Traffic Cone
813619	28 in. Traffic Cone



● Non-Reflective "SURVEY CREW" Sign

Non-reflective, high-visibility orange sign with rib support. Roll-up design for daytime use. Stand sold separately.

813652	36 in. SURVEY CREW non-reflective sign
813653	48 in. SURVEY CREW non-reflective sign
813656	Replacement Rib Set 36 in.
813657	Replacement Rib Set 48 in.



● Reflexite "SURVEY CREW" Sign

Reflexite Super Bright™ orange sign with rib supports. Roll-up design for day and night visibility. Stand sold separately.

813654	36 in. SURVEY CREW Reflexite sign (SO)
813655	48 in. SURVEY CREW Reflexite sign (SO)
813656	Replacement Rib Set 36 in.
813657	Replacement Rib Set 48 in.

Safety and Common Accessories

- **Uniflex Screwlock Sign Stand**

NCHRP-350 approved design. Single heavy-duty coil spring to hold 36 in. and 48 in. signs. Kick-release adjustable legs for easy setup. Stand only. Sign sold separately.

813651	Uniflex Screwlock Sign Stand
---------------	------------------------------

- **T-50 Economy Tripod Sign Stand**

NCHRP-350 approved design with roll-up signs on low speed roadways. Holds 36 in. or 48 in. signs. For day and night visibility. Stand only. Sign sold separately.

813650	T-50 Economy Tripod Sign Stand
---------------	--------------------------------

- **Caution Tape**

Caution tape; yellow; 3 mil, 1,000 ft.

811050	Caution Tape (1 roll)
---------------	-----------------------



Geo-Positioning Equipment



Topcon Geo-Positioning



● GT

- UltraSonic Direct Drive motors – Fastest Robotic Total Station in the World!
- 30% smaller and lighter than any Topcon Robotic instrument with more functionality
- TSshield™ global service
- Advanced UltraTrac technology
- 3-year instrument and 5-year motor warranty
- Available in two models: GT-500 and GT-1000



● HIPER SR

- Universal Tracking Channel technology
- Advanced Fence Antenna™ technology
- Compact, lightweight, rugged and cable free design
- Fully integrated LongLink™ and cellular configuration (optional)
- Dual SIM card support



● HYBRID

- Expanded work zones, all production
- Hybrid Lock for faster prism reacquisition
- Hybrid Resection control setup option
- Hybrid Switch from GNSS to optical with single-button tap
- Compatible with all Topcon robotic instruments



Topcon Geo-Positioning



● HIPER HR

- Compact, lightweight, rugged design – capable of withstanding a 2-meter pole drop
- Five unique data communication options
- All signals, all satellites, all constellations
- Field tested, field ready IP67 design
- Compact form factor ideal for Millimeter GPS and Hybrid Positioning
- Revolutionary 9-axis IMU and ultra-compact 3-axis eCompass

● HIPER V

- Vanguard Technology™
- Universal Tracking Technology
- Rugged, magnesium alloy construction
- Integrated form delivering full RTK, Static, Network functionality
- Fench Antenna™ evolution for optimal signal isolation and tracking

● FC-500

- 4.3 in. sunlight readable display
- MIL-STD 810G and IP68 certified
- 1GHz processor
- 5 megapixel integrated camera (optional)
- Internal 3.5G cellular modem
- Internal GPS with 1-5 meter accuracy (optional)

● FC-5000

- Sunlight readable 7 in. display
- Intel® Atom™ Z3745 processor
- MIL-STD-810G and IP68 certified
- Windows® 10 operating system
- 8 MP rear camera, 2 MP front camera
- Integrated 4G LTE cellular module



Sokkia Geo-Positioning



● **SDL1X**

- Eight innovative features never before available in the industry*:
- 0.2mm precision (ISO 17123-2)
- Auto Focus for high-end digital level
- View Finder for quick sighting
- Remove Trigger for wireless operation
- Dual-axis Tilt Sensor that ensures precision
- SD card slot for data storage
- 100m (320ft.) Bluetooth® wireless communication
- BIS30A staff with (plus/minus sign)0.1ppm/degrees C linear expansion coefficient
*As of June 1, 2009



● **GCX3**

- All-in-view constellation GNSS receiver
- 226 optimized-satellite tracking channels
- Second-generation POST2™ (Precision Orbital Satellite Technology) integrated antenna – robust signal tracking even around interference sources
- Compact, lightweight, rugged and cable-free design
- Ideal network RTK rover
- Wireless, multi-channel long-range BluetoothR technology



● **iX SERIES**

- UltraSonic motors
- 30 percent smaller and lighter
- TSshield™ global service
- UltraTrac technology
- Three-year instrument warranty
- Five-year UltraSonic motor warranty



● **FUSION**

- Expanded work zones, all production
- Hybrid Lock for faster prism reacquisition
- Hybrid Resection control setup option
- Hybrid Switch from GNSS to optical with single-button tap
- Compatible with all Topcon robotic instruments



Machine Control



● 3D-MC²

Traditional finish grading with a dozer took multiple passes at slower speeds. Existing 3D-GPS machine control allowed operators to double their production. 3D-MC² uses revolutionary technology to reach an unbelievable new level of performance: four times faster than a standard dozer, two times faster than any 3D dozer. One dozer doing the work of two 3D dozers; think of the money you will save.

BENEFITS

- Increase speeds up to 200% over existing 3D systems
- Smoothness and grading accuracy comparable to motor grader
- Same easy-to-use interface as previous Topcon machine automation systems
- Unmatched productivity that you will have to see to believe

COMPONENTS

- Graphical User Interface
- Rugged design
- Communications receiver
- Sensor features

Machine Control



● 3D-MC^{MAX}

A revolutionary dozing system, 3D-MC^{MAX} delivers the highest productivity dozer solution for any rough or fine grading application. 3D-MC^{MAX} uses two of our industry leading IMU sensors, both the body and blade sensor keep the blade cutting edge on grade for any application. This system was built to keep you productive on any job site – providing maximum speed, maximum control, and maximum performance.

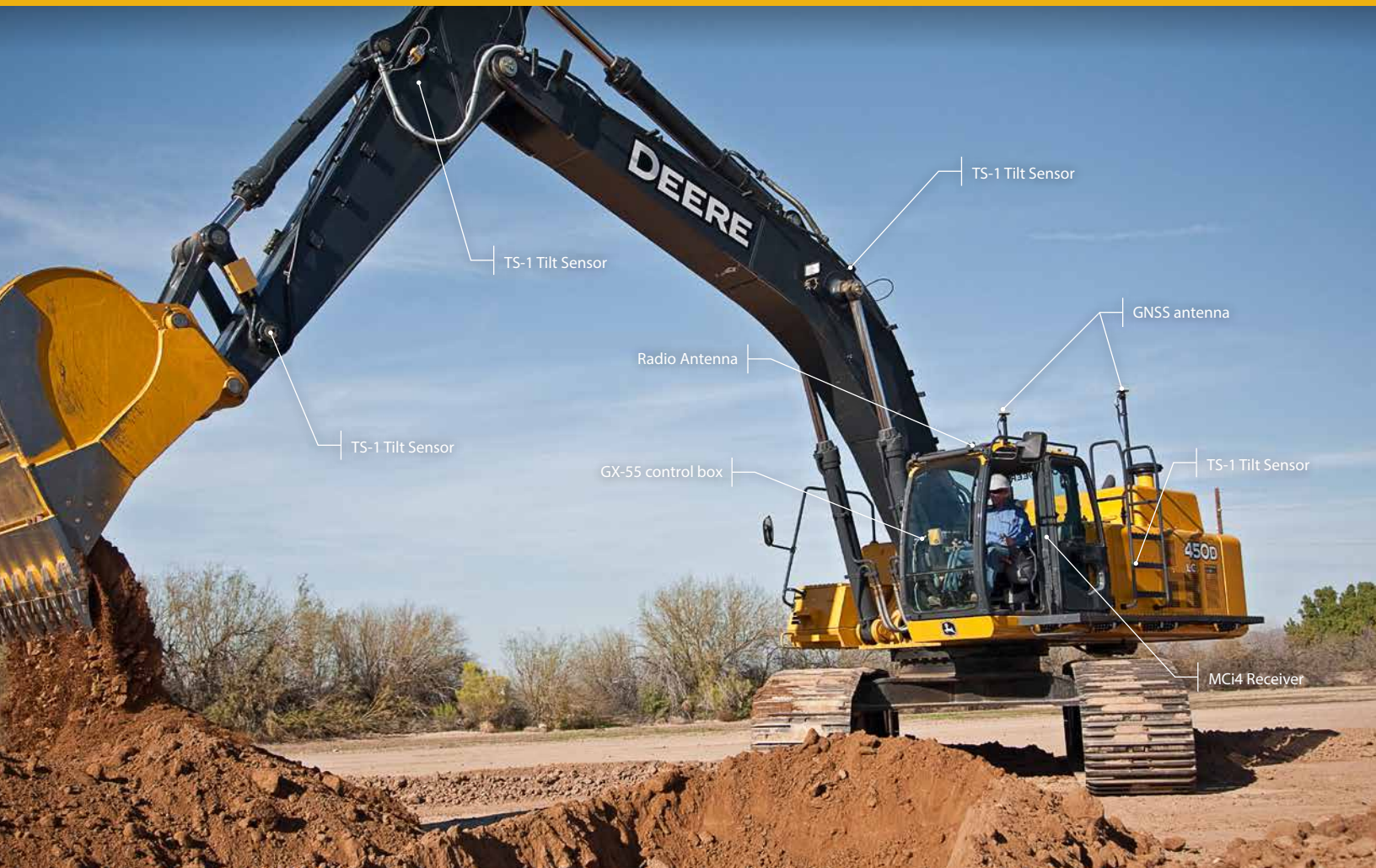
BENEFITS

- Single or dual antenna 6-way blade control
- Eliminates the need for GNSS antenna mast and cables for the blade
- Superior performance for any rough or fine grading job site application
- Increased blade response
- Accurate as-built data for volume and productivity reporting

COMPONENTS

- Rapid blade response technology
- Intuitive control box
- Versatile motion control interface
- Fence AntennaTM technology

Machine Control



● X53i

With integrated GNSS technology, a bright and clear touchscreen control box, and innovative tilt sensors – the X-53i system saves time, facilitates common tasks and movements while improving safety daily. Eliminate over-excavation while reaching the target grade with precision.

BENEFITS

- Cut grade fast and accurately
- Cut flat, vertical and 3D surfaces
- Fully upgradeable
- Improves job safety
- Lighter grade guidance and built-in audible alarms

COMPONENTS

- Graphical User Interface
- Rugged design
- MC-i4
- TS-1 / TS-i3

Software

● Magnet Field

Magnet Field is a powerful and intuitive application software that enables users to collect survey mapping data and perform construction and road layout using total stations, levels, and GPS.

● Magnet Office

Magnet office is a processing, design and drafting software that meets the demands of land surveyors and construction contractors. MAGNET Office is available in five versions: Tools, Topo, Layout, Site, and Site with Resurfacing.

● Magnet Enterprise

MAGNET Enterprise is a web browser-based environment that simplifies managing field and office data in the cloud. Track assets and communicate with everyone involved on your projects. Login from any browser for live updates. Save time and collaborate.

● Pocket 3D

Add the Pocket 3D management system to your business and take more control over the entire job site. Pocket 3D puts the power of GNSS based site management in the hands of the site foreman and grade checkers making it easy for them to verify grades, reset stakes or locate utilities on site.

● Sitelink 3D™

Sitelink 3D is a complete site communication system providing data control, machine tracking and a reporting system in one solution. With Sitelink 3D, Topcon expands its highly advanced machine control systems to include remote machine support, electronic job file transfer and real-time project management information.

- Communication and management system for all machines on all job sites
- File transfer and messaging
- Real time job site updates
- Remote access and support
- Machine tracking

RTK Precision has never been so easy!

The Brandnet RTK Network makes your life easier and your business more profitable with unparalleled ease-of-operation and reduced equipment and operating costs.

Brandtnet users have no need to set up a costly base station. All you need is a Brandtnet RTK Network Subscription, a data collector with a mobile internet connection, and your existing surveying software. Then simply activate your receiver, connect to the Brandtnet RTK Network and start receiving GPS corrections immediately. It's easy, cost-effective, and will have you up and working in no time!

BENEFITS

- Network RTK solution with virtual reference point corrections
- Upgraded hardware
- Topcon paradigm G3 chip technology
- Real-time and post-processed data services
- All-in-one online subscription service
- Brandtnet proprietary DATA card
- New & improved server delivering increased security and reliability.
- Larger network with over 134 reference stations across Canada and growing
- Specialized customer support & training



Brandtnet

Aerial Products & Scanners



● Intel® Falcon 8+ Drone – Topcon Edition

The Topcon Falcon 8 powered by Ascending Technologies is a rotary-wing UAS designed for inspection and monitoring or survey and mapping applications, depending on which camera payloads are used. The Falcon 8 offers the flexibility to get into small spaces and compromising situations often presented in the inspection and monitoring applications.

- Transport Canada Compliant UAV
- Fully redundant system for safety and predictable flight behavior – triple redundant IMU, redundant propulsion, dual redundant batteries, and redundant command and control links 4K video w/ live HD video feed
- Electromagnetic interference shielding
- Adaptive flight controller with automatic center of gravity compensation
- New Intel® Cockpit Controller
- Strong wind resistance up to 58 km/hr
- Optional payloads: High resolution survey payload, or dual camera inspection payload (30x optical zoom & FLIR thermal camera side-by-side)



● GLS-2000

The GLS-2000 series of scanners is comprised of three comparable, yet distinct models; the GLS-2000S (short-range), GLS-2000M (medium-range), and GLS-2000L (long-range). Each model is a full-featured scanner that can be effectively deployed to capture existing, as-built conditions based on the measurement range requirements of the application. The innovative capabilities of the GLS-2000 combined with its field rugged design, provides users with a purposeful solution that will stand up to the most extreme work environments.



Aerial Products & Scanners



● TOPCON SIRIUS PRO

A clever aerial survey tool, the Sirius Pro eliminates the need to set ground control points, saving you considerable time and expense. Quickly capture images with automated GNSS-RTK locations and time stamps for any area you select; equivalent to 1000 control points in the air.

- Simple hand launch (no catapult required)
- Up to 50 minutes of flight time
- Auto or assisted landing
- Flight plan automatically adapts to elevation model, maintaining consistent ground sample distance
- Operational in strong wind – 50 km/h (gusts to 65 km/h)
- Operates in rain and temperatures from -20°C to +45°C
- RGB or NIR payloads available



● STRYDER

Stryder is a revolutionary unmanned aerial system designed to be simple and safe to operate while providing unmatched selection of field swappable payloads able to meet growing demand for increasingly diverse forms of aerial data. Unparalleled service, training and support is provided by Brandt's Canada-wide network.

- Transport Canada Compliant UAV
- Professional grade DJI components
- 4K video w/ live HD video feed
- 12 MP stabilized camera (camera payload options available)
- 24–42 MP camera options available
- RC controller with iPad mount
- (2) 16 Ah Smart batteries w/ charger
- Custom hard case
- Up to 35 minute flight time
- Optional PPK direct geo-referencing for survey grade accuracy without the need for ground control points
- Custom compact and rugged airframe designed for harsh environments
- Controlled via iPad/iPhone using iOS apps (iPad not included)
- Simple manual controls with fully automated take-off and landing
- Custom branding/graphics available



Brandt Technology Integration Services



**YOUR INDUSTRY IS
IN THE MIDDLE OF
A REVOLUTION.
ARE YOU?**



New technologies are transforming the construction landscape and Brandt's Technology Integration Services (TIS) team is your key to success in this rapidly evolving market.

TIS is the only dedicated and fully staffed positioning technology support team in the industry. Brandt has integrated all of the technical support and training functions into one specialized group to keep you up and running and getting full value from your positioning technology purchase.

TIS offers specialized customer support and expert training for machine control, survey-grade GPS, robotic total stations, UAVs, laser scanners, mobile laser scanners and all related software and firmware.

Our team works closely with you to streamline the integration of new technologies and best practices. We take care of your learning curve, providing all the training and support you need to succeed.

No matter what your positioning technology issue or where you're working, Brandt's TIS team is there for you. One phone call gives you instant access to highly qualified professionals who will do whatever it takes to get you back to work as quickly as possible.

Visit **brandt.ca** for dates and details of upcoming training opportunities, or call **1 (855) 832-2783** to make your operation more productive and profitable than you ever thought possible!

POSITION YOURSELF.

Brandt



To succeed in business, staying ahead of the technology curve is a must. Brandt provides the integrated positioning technology solutions – from bid to completion - that position your business for success.

Our hard-working team of industry-certified positioning technology specialists works closely with you to successfully and profitably integrate and leverage a full range of positioning and mass-data gathering and analysis tools; delivering powerful value for your business.

Nobody works harder than Brandt to keep you productive and profitable. **That's Powerful Value, Delivered.**

Customer Support:

1 (855) 832-2783

TOPCON

ValPar

SOKKIA