

# 850K WASTE HANDLER

152 kW (205 hp)



JOHN DEERE



A large yellow waste handler machine is shown in the process of dumping a massive pile of mixed waste, including plastic, paper, and other debris, into a landfill. The machine's rear-mounted hopper is tilted, and the waste is falling out. The background is a clear blue sky.

# Purpose-built for handling waste.

With its full-featured hydrostatic drivetrain, the 850K Waste Handler delivers production-boosting advantages you just don't get with other crawlers in this class. But powerful performance is just the start of the 850K WH story. This 24-ton workhorse also comes equipped with an EPA Interim Tier 4/EU Stage IIIB diesel engine for work in nonattainment areas. Spacious redesigned cab that's noticeably quieter and more comfortable. And best-in-class serviceability features, such as an innovative easy-to-clean "V-cool" package. Purpose-built to be as waste-proof and easy to maintain as possible, the 850K Waste Handler delivers the productivity and uptime you need for landfill work.

Designed and built with extensive input from solid-waste professionals like you, the 850K is a rugged and reliable performer.

For work in the waste pile, equip your 850K WH with an outside-mount semi-U blade and optional trash rack.

For cover and slope work with occasional waste-pile use, opt for the inside-mount power-angle-tilt (PAT) blade with optional trash rack.

Our EPA IT4/EU Stage IIIB engine technology is simple, fuel efficient, fully integrated, and fully supported. It employs field-proven cooled exhaust gas recirculation (EGR) for reducing NO<sub>x</sub>, and a diesel particulate filter (DPF) and diesel oxidation catalyst (DOC) to reduce particulate matter. Periodic active and passive regeneration automatically cleans the filter without impacting machine performance.



**Outside-Mount Blade:**

**WT Undercarriage**

5.8-m<sup>3</sup> (7.6 cu. yd.) capacity

11.1-m<sup>3</sup> (14.5 cu. yd.) capacity with optional trash rack

21 436-kg (47,258 lb.) base weight

**LGP Undercarriage**

6.0-m<sup>3</sup> (7.8 cu. yd.) capacity

11.7-m<sup>3</sup> (15.2 cu. yd.) capacity with optional trash rack

23 316-kg (51,403 lb.) base weight

**PAT Blade:**

**WLT Undercarriage**

4.3-m<sup>3</sup> (5.6 cu. yd.) capacity

9.7-m<sup>3</sup> (12.7 cu. yd.) capacity with optional trash rack

21 869-kg (48,213 lb.) base weight

**LGP Undercarriage**

4.5-m<sup>3</sup> (5.9 cu. yd.) capacity

9.9-m<sup>3</sup> (12.9 cu. yd.) capacity with optional trash rack

22 523-kg (49,655 lb.) base weight

# Get more work done inside our comfort zone.

If you're looking for a crawler that does more with less effort, you'll put your operators in the seat of ours. The 850K's job-proven hydrostatic system goes beyond the limits of other drivetrains, delivering infinitely variable ground speeds, power management, and full-power turns. What's more, Total Machine Control (TMC) lets an operator customize machine operation and response to personal preferences — for nearly tireless operating ease that helps make big productivity possible. Nothing runs like this Deere.

Oil-filled cab mounts, high-back air-suspension seat, and extensive insulation effectively isolate the operator from vibration and noise. At just 76 dBA, the 850K is noticeably quiet.

Spacious air-conditioned cab is pressurized and employs two easy-to-service filters to control dust. An optional powered pre-cleaner extends filter life and further diminishes odors.

Numerous directional vents help keep the glass clear and interior comfortable.

Deluxe high-back air-suspension seat with optional lower-heated cushion adjusts multiple ways.

Power management takes the work out of efficient operation. Simply set maximum desired ground speed and the machine does the rest — automatically powering up or down as loads change to maintain peak engine rpm and power efficiency.

Independent track control speeds up or slows down each side — for smooth, full-power turns. An automatic 10-percent power boost helps carry big blade loads through turns.





1. TMC makes it easy to customize decelerator mode and response, forward/reverse ground-speed ranges, steering modulation, F-N-R shift rate, and forward/reverse ratios. For one-of-a-kind control.

2. Sealed-switch module gives fingertip control of keyless start and exclusive features such as turbocharger cool-down and auto-shutdown — plus numerous other functions.

3. Ergonomically correct joystick provides intuitive, low-effort control of steering, forward/reverse travel, and ground speed.



# Cool productivity.

The 850K Waste Handler is built to run cool regardless of what's in the air or underfoot. Its innovative highly efficient cooling system employs a hydraulic-driven variable-speed fan that helps preserve power and precious fuel. Plus, the fan automatically reverses to help shed waste and debris from cooler cores and side screens. So your operators can work hard without hardly breaking a sweat.



Standard variable-speed fan automatically speeds up or slows down, running only as fast or frequently as needed to keep things cool. Improves fuel efficiency and decreases noise levels, too.

Reversing fan can be set to change direction every 30, 60, or 90 minutes, or activated from the seat as needed to clear debris from cooler cores.

Unitized mainframe with flush-fit bottom guards combines with tight-fitting side shields to prevent debris from being drawn into the engine compartment.

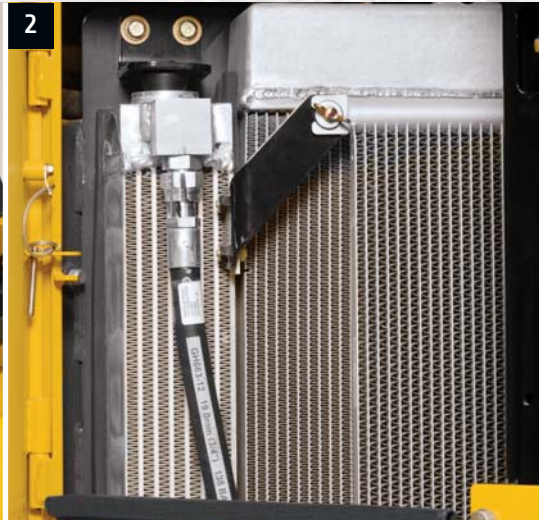
Generous surface area provides plenty of airflow to reduce debris vacuuming. Plus, the cooling system is isolated from the engine compartment, further improving debris management.

Three-millimeter perforations in the hood and side shields act as a "first filter," preventing entry of most airborne debris.

1. Grille tilts out without tools, providing quick and easy full-core access for simplified trash and debris clean-out.

2. Right- and left-side doors also swing open wide, exposing the back of the coolers.

3. Exclusive V-cool design isolates coolers away from engine heat for increased efficiency and durability. Positioned behind the heavy-duty grille and fan, coolers are also less vulnerable.



# Unyielding.

You won't have to worry about this waste handler getting trashed too soon. We started with our highly reliable 850K Dozer, then added what was needed to help it survive, even thrive, the daily grind of landfill work. Anything that could be susceptible to damage has been sealed, rerouted, or re-engineered to help ensure maximum uptime.



Outside-mount semi-U blade hoses are routed internally where they're not exposed to damage or snagging. Inside-mount six-way PAT blade hoses are steel-cable supported and Cordura™ covered for extra protection.

Lift-cylinder guards keep hydraulic hoses and cylinders out of danger.

Unlike elevated tracks, our heavy-duty sealed and lubricated Dura-Trax™ undercarriage has only one wear-causing forward-travel flex point — for longer life.

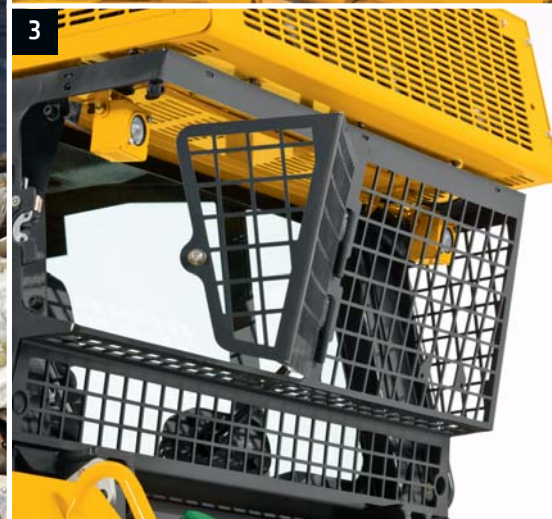
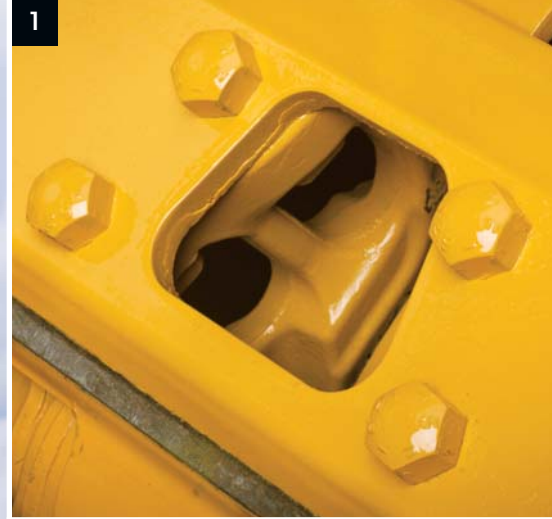
Uni-body track frames ensure durability. Smooth idler-to-sprocket covers shed material and resist buildup, simplifying clean-out.

Bolt-on seal guards and stepped-labyrinth housings make the final drives virtually impenetrable. They help minimize downtime and expense by keeping wire, strapping tape, metal springs, and other intrusive contaminants away from final drive seals.





1. Trapezoidal openings in extreme-duty track shoes, recessed segmented sprockets, and cantilevered carrier rollers help resist undercarriage packing.
2. Heavy-duty tank guards help protect the hydraulic, hydrostatic, and fuel reservoirs. Optional front and rear striker bars help shed material from the tracks.
3. Rear window guard protects glass from impacts, swings open for easy clean-out.



Unitized mainframe with flush-fit bottom guards forms a smooth underbelly that doesn't accumulate or drag trash.

Optional full-width trash rack reduces front-end damage and increases blade load-carrying capacity.

Air-conditioning condenser is mounted up and away behind the cab for protection and dust reduction.

Four forward and three rear high-intensity halogen work lights are positioned high for superior illumination.

Cab-mounted strobe light is activated whenever the electrical system is switched on.

Sealed electrical center protects fuses, relays, and connections from dirt, debris, and moisture.

# Designed with an open mind.

It takes only minutes to uncover the many ways the re-imagined 850K helps minimize maintenance. Side shields swing open wide to reveal convenient same-side daily service points. A unique tilt-out fan box allows simplified access to cooler cores for quick clean-out. Other periodic service tasks such as fluid and filter changes are also refreshingly easy. Even gaining access to drivetrain components takes only minutes. As you can see, when it comes to keeping uptime up and daily operating costs down, we're pretty open-minded.

Separate hydraulic and hydrostatic reservoirs eliminate any possibility of cross-contamination. Sight gauges reveal fluid levels at a glance.

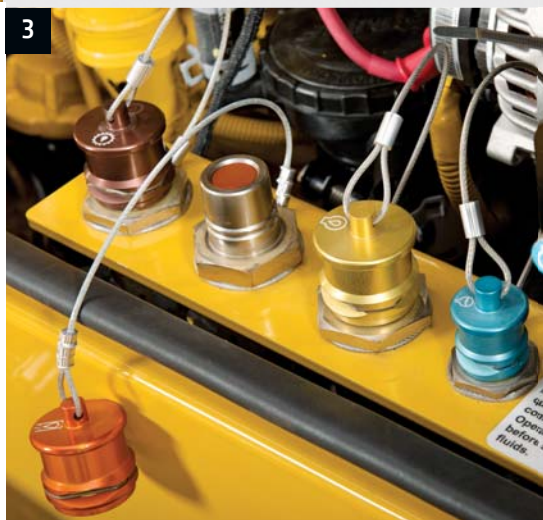
Fluid-sample and diagnostic test ports simplify preventative maintenance work and troubleshooting for increased uptime.

Vertical filters allow quick, no-spill changes. Engine, hydraulics, and transmission utilize a common oil, further simplifying service and expense.

Rotary air pre-cleaner ejects dust to maximize filter life and includes a trash guard to prevent debris entry.



1. Operator station tilts a full 70 degrees in only minutes, for wide-open internal component access.
2. EPA IT4/EU Stage IIIB DPF is easily removed through the top of the engine compartment. Minimum service interval is 5,000 hours, and can be done by your John Deere dealer.
3. Available quick fluid-evacuation system helps speed servicing. Five-hundred-hour engine oil and 2,000-hour transmission and hydraulic fluid intervals decrease downtime and expense.





Greaseless center crossbar pin joint provides long life with less maintenance. Convenient color-coded lube chart ensures that nothing gets overlooked.

Advanced in-cab monitor gives easy-to-understand diagnostic messages for quick and easy troubleshooting without special tools.

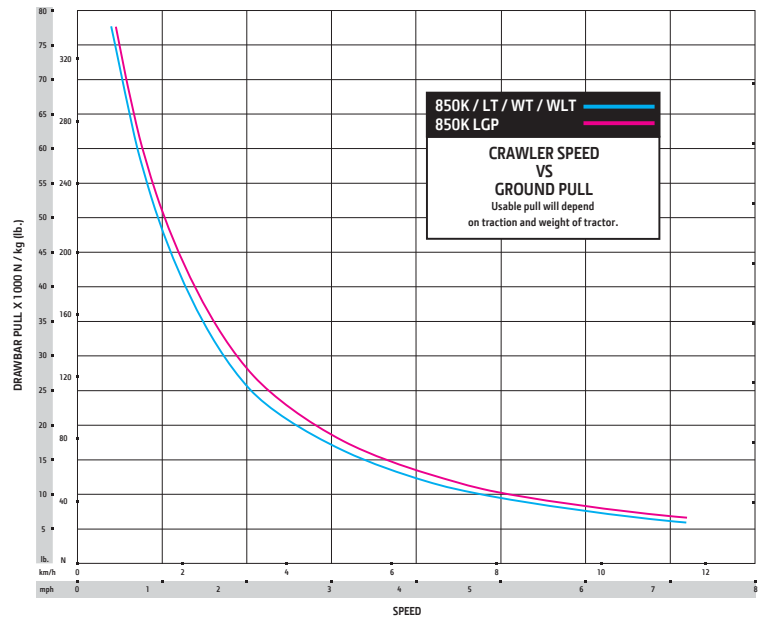
Your 850K comes standard equipped with JDLink™ Ultimate, which allows convenient computer access to machine hours, location, dashboard alerts, diagnostic trouble codes, maintenance tracking, utilization and fuel-consumption data, and more.

Hinged bottom guard opens easily for quick and convenient clean-out.

# 850K WH



| Engine  | 850K WLT / 850K LGP  |                       | 850K WT / 850K LGP                         |                       |
|---|--|-----------------------|--|-----------------------|
|   | <b>Power-Angle-Tilt (PAT) Blade</b>  |                       | <b>Outside Dozer (OSD) Blade</b>           |                       |
| Manufacturer and Model                              | John Deere PowerTech™ PVX 6068   |                       | John Deere PowerTech PVX 6068              |                       |
| Non-Road Emission Standards                         | EPA Interim Tier 4/EU Stage IIIB   |                       | EPA Interim Tier 4/EU Stage IIIB           |                       |
| Displacement  | 6.8 L (414 cu. in.)  |                       | 6.8 L (414 cu. in.)                        |                       |
| SAE Net Rated Power                                 | 152 kW (205 hp) at 1,800 rpm   |                       | 152 kW (205 hp) at 1,800 rpm               |                       |
| Net Peak Torque                                     | 915 Nm (675 lb.-ft.) at 1,500 rpm  |                       | 915 Nm (675 lb.-ft.) at 1,500 rpm          |                       |
| Aspiration  | Turbocharged with charge air cooler  |                       | Turbocharged with charge air cooler        |                       |
| Air Cleaner   | Vacuum-aspirated dual-element dry canister   |                       | Vacuum-aspirated dual-element dry canister |                       |
| Slope Operation, Maximum Angle                      | 45 deg.  |                       | 45 deg.                                    |                       |
| <b>Cooling</b>                                      |  |                       |  |                       |
| Variable-speed suction fan with automatic reversing |  |                       |  |                       |
| Engine Coolant Rating                               | -37 deg. C (-34 deg. F)  |                       | -37 deg. C (-34 deg. F)                    |                       |
| Engine Radiator                                     | 10 fins per inch (25.4 mm)   |                       | 10 fins per inch (25.4 mm)                 |                       |
| <b>Powertrain</b>                                   | <b>850K WLT</b>  | <b>850K LGP</b>       | <b>850K WT</b>                             | <b>850K LGP</b>       |
| <b>Transmission</b>                                 | Automatic, dual-path, hydrostatic drive; load-sensing feature automatically adjusts speed and power to match changing load conditions; each individually controlled track is powered by a variable-displacement piston pump and motor combination; ground-speed selection buttons on single-lever steering and direction control; independently selectable reverse speed ratios of 80%, 100%, 115%, or 130% of forward ground speed; decelerator pedal controls ground speed to stop |                       |  |                       |
| System Relief Pressure                              | 45,850 kPa (6650 psi)  | 45,850 kPa (6650 psi) | 45,850 kPa (6650 psi)                      | 45,850 kPa (6650 psi) |
| <b>Travel Speeds</b>                                |  |                       |  |                       |
| Forward and Reverse                                 | 9.7 km/h (6.0 mph)   | 9.7 km/h (6.0 mph)    | 9.7 km/h (6.0 mph)                         | 9.7 km/h (6.0 mph)    |
| Maximum (optional)                                  | 11.0 km/h (6.8 mph)  | 11.0 km/h (6.8 mph)   | 11.0 km/h (6.8 mph)                        | 11.0 km/h (6.8 mph)   |
| <b>Steering</b>                                     | Single-lever steering, speed, direction control, and counterrotation; full power turns and infinitely variable track speeds provide unlimited maneuverability and optimum control; hydrostatic steering eliminates steering clutches and brakes  |                       |  |                       |
| <b>Final Drives</b>                                 | Double-reduction, planetary final drives transfer torque loads over 3 gear sets; mounted independently of track frames and dozer push frames for isolation from shock loads  |                       |  |                       |
| Total Ratio   | 44.7483 to 1   | 44.7483 to 1          | 44.7483 to 1                               | 44.7483 to 1          |
| <b>Drawbar Pull</b>                                 |  |                       |  |                       |
| Maximum   | 344 kN (77,300 lb.)  | 344 kN (77,300 lb.)   | 344 kN (77,300 lb.)                        | 344 kN (77,300 lb.)   |
| At 1.9 km/h (1.2 mph)                               | 167 kN (37,500 lb.)  | 178 kN (40,000 lb.)   | 167 kN (37,500 lb.)                        | 178 kN (40,000 lb.)   |
| At 3.2 km/h (2.0 mph)                               | 120 kN (27,000 lb.)  | 131 kN (29,500 lb.)   | 120 kN (27,000 lb.)                        | 131 kN (29,500 lb.)   |



**Service Brakes** Hydrostatic (dynamic) braking stops machine when the direction/steering control lever is moved to neutral or the decelerator is depressed to the end of travel

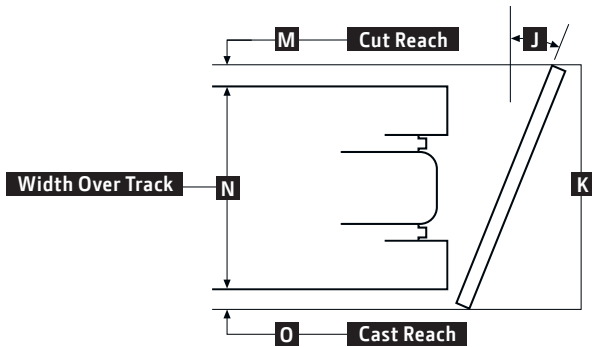
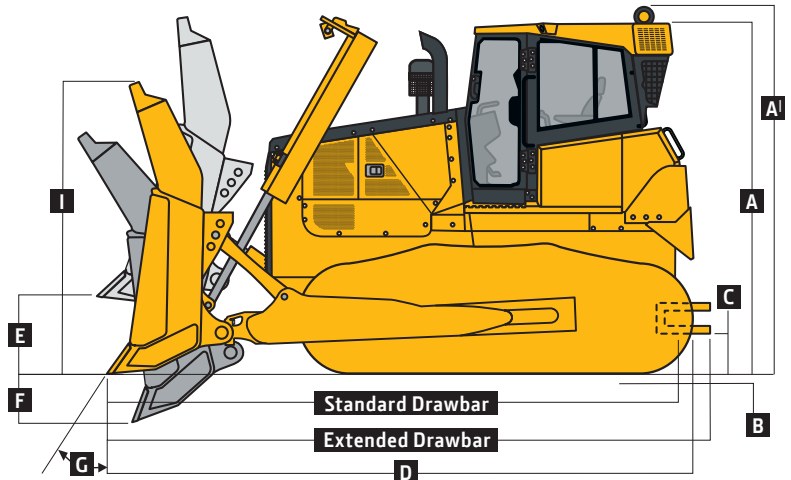
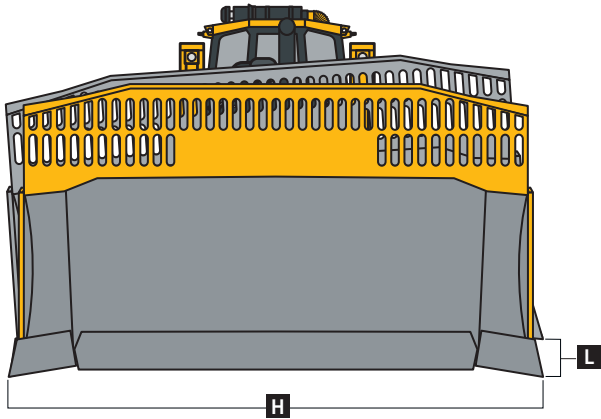
**Parking Brakes** Exclusive safety feature engages wet, multiple-disc brakes whenever the engine stops, the decelerator is depressed to the end of travel, or the park lock lever is placed in the start or neutral positions and motion is detected; machine cannot be driven with brake applied, reducing wear-out or need for adjustment; spring-applied, hydraulic release



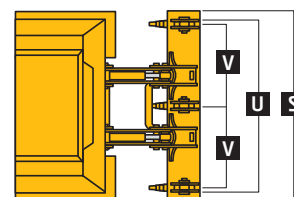
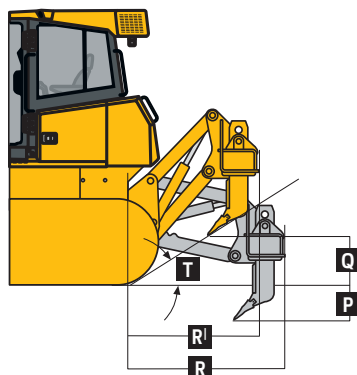
| Hydraulics  | 850K WLT / 850K LGP  |  | 850K WT / 850K LGP                        |  |
|---|--|--|---|--|
|   | <b>Power-Angle-Tilt (PAT) Blade</b>  |  | <b>Outside Dozer (OSD) Blade</b>          |  |
| Type  | Load-sense hydraulic system with variable-displacement piston pump   |  |   |  |
| Pump Displacement                                 | 74 cc  |  | 74 cc                                     |  |
| Pump Capacity                                     | 174 L/m (46 gpm)   |  | 174 L/m (46 gpm)                          |  |
| System Relief Pressure                            | 24 993 kPa (3,625 psi)   |  | 24 993 kPa (3,625 psi)                    |  |
| Differential Pressure                             | 1896 kPa (275 psi)   |  | 1896 kPa (275 psi)                        |  |
| Maximum Flow at Unloaded High Idle                | 163 L/m (43 gpm)   |  | 163 L/m (43 gpm)                          |  |
| Control   | 3-function hydraulic-pilot T-bar joystick with push-button angle function  |  | 2-function hydraulic-pilot T-bar joystick |  |
| Electrical  |  |  |   |  |
| Voltage   | 24 volts   |  | 24 volts                                  |  |
| Battery Capacity                                  | 950 CCA  |  | 950 CCA                                   |  |
| Reserve Capacity                                  | 190 min.   |  | 190 min.                                  |  |
| Alternator Rating                                 |  |  |   |  |
| Cab   | 130 amp  |  | 130 amp                                   |  |
| Canopy  | 100 amp  |  | 100 amp                                   |  |
| Lights  | Grille mounted (2), rear mounted (2), engine compartment (1), and rear reflectors (2)  |  |   |  |
| Undercarriage                                     | 850K WLT   | 850K LGP                               | 850K WT                                   | 850K LGP                               |
| <b>Tracks</b>                                     | Track frame with front and rear track guides and sprocket guard; John Deere Dura-Trax™ features deep-heat-treated, sealed, and lubricated track links and through-hardened, sealed, and lubricated rollers for maximum wear resistance; sprockets are segmented; extreme-duty shoes are available (on some models) for severe applications |  |   |  |
| Track Gauge                                       | 2235 mm (88 in.)   | 2388 mm (94 in.)                       | 2032 mm (80 in.)                          | 2184 mm (86 in.)                       |
| Grouser Width                                     | 762 mm (30 in.)  | 914 mm (36 in.)                        | 762 mm (30 in.)                           | 914 mm (36 in.)                        |
| Chain   | Sealed and lubricated  | Sealed and lubricated                  | Sealed and lubricated                     | Sealed and lubricated                  |
| Shoes, Each Side                                  | 45   | 45                                     | 40  | 45                                     |
| Track Rollers, Each Side                          | 8  | 8                                      | 7   | 8                                      |
| Track Length On Ground                            | 3284 mm (129 in.)  | 3284 mm (129 in.)                      | 2769 mm (109 in.)                         | 3284 mm (129 in.)                      |
| Ground Contact Area                               | 50 048 cm <sup>2</sup> (7,757 sq. in.)   | 60 058 cm <sup>2</sup> (9,309 sq. in.) | 42 200 cm <sup>2</sup> (6,541 sq. in.)    | 60 058 cm <sup>2</sup> (9,309 sq. in.) |
| Ground Pressure                                   | 42.9 kPa (6.22 psi)  | 36.8 kPa (5.33 psi)                    | 49.8 kPa (7.22 psi)                       | 38.1 kPa (5.52 psi)                    |
| Track Pitch                                       | 203 mm (8 in.)   | 203 mm (8 in.)                         | 203 mm (8 in.)                            | 203 mm (8 in.)                         |
| Oscillation at Front Roller                       | ± 166.5 mm (± 6.5 in.)   | ± 168 mm (± 6.6 in.)                   | ± 114 mm (± 4.5 in.)                      | ± 168 mm (± 6.6 in.)                   |
| Blades  |  |  |   |  |
| Weights include straight end bits                 |  |  |   |  |
| Straight  |  |  |   |  |
| Length  | 4013 mm (158 in.) (13 ft. 2 in.)   | 4267 mm (168 in.) (14 ft. 0 in.)       | —   | —                                      |
| Capacity  |  |  |   |  |
| With Optional Trash Rack                          | 9.7 m <sup>3</sup> (12.7 cu. yd.)  | 9.9 m <sup>3</sup> (12.9 cu. yd.)      | —   | —                                      |
| Without Optional Trash Rack                       | 4.3 m <sup>3</sup> (5.6 cu. yd.)   | 4.5 m <sup>3</sup> (5.9 cu. yd.)       | —   | —                                      |
| Weight  |  |  |   |  |
| With Optional Trash Rack                          | 1528 kg (3,369 lb.)  | 1607 kg (3,543 lb.)                    | —   | —                                      |
| Without Optional Trash Rack                       | 1330 kg (2,932 lb.)  | 1397 kg (3,080 lb.)                    | —   | —                                      |
| Semi-U  |  |  |   |  |
| Length  | —  | —                                      | 3556 mm (140 in.) (11 ft. 8 in.)          | 3861 mm (152 in.) (12 ft. 8 in.)       |
| Capacity  |  |  |   |  |
| With Optional Trash Rack                          | —  | —                                      | 11.1 m <sup>3</sup> (14.5 cu. yd.)        | 11.7 m <sup>3</sup> (15.2 cu. yd.)     |
| Without Optional Trash Rack                       | —  | —                                      | 5.8 m <sup>3</sup> (7.6 cu. yd.)          | 6.0 m <sup>3</sup> (7.8 cu. yd.)       |
| Weight  |  |  |   |  |
| With Optional Trash Rack                          | —  | —                                      | 1774 kg (3,911 lb.)                       | 1867 kg (4,116 lb.)                    |
| Without Optional Trash Rack                       | —  | —                                      | 1567 kg (3,455 lb.)                       | 1641 kg (3,612 lb.)                    |
| Push-Beam/C-Frame Assembly Weight (without blade) | 1647 kg (3,631 lb.)  | 1647 kg (3,631 lb.)                    | 1889 kg (4,156 lb.)                       | 2101 kg (4,622 lb.)                    |
| Operator Station                                  | 850K WLT / 850K LGP  |  | 850K WT / 850K LGP                        |  |
| ROPS (ISO 3471 – 2008) and FOPS (ISO 3449 – 2005) |  |  |   |  |
| Serviceability                                    |  |  |   |  |
| Refill Capacities                                 |  |  |   |  |
| Fuel Tank with Lockable Cap                       | 356 L (94 gal.)  |  | 356 L (94 gal.)                           |  |
| Cooling System with Recovery Tank                 | 35 L (9.2 gal.)  |  | 35 L (9.2 gal.)                           |  |
| Engine Oil with Filter                            | 24.6 L (6.5 gal.)  |  | 24.6 L (6.5 gal.)                         |  |
| Transmission Reservoir with Filter                | 106 L (28 gal.)  |  | 106 L (28 gal.)                           |  |
| Hydraulic Reservoir and Filter                    | 106 L (28 gal.)  |  | 106 L (28 gal.)                           |  |

| Operating Weights   | 850K WLT                             | 850K LGP                             | 850K WT                             | 850K LGP                            |
|---|--------------------------------------|--------------------------------------|-------------------------------------|-------------------------------------|
|   | <b>Power-Angle-Tilt (PAT) Blade</b>  |                                      | <b>Outside Dozer (OSD) Blade</b>    |                                     |
| <i>Base Weight (with standard equipment, rollover protective structures, full fuel tank, 79-kg (175-lb.) operator, and waste-handler package, plus select optional equipment marked with *)</i> | 21 869 kg (48,213 lb.)               | 22 523 kg (49,655 lb.)               | 21 436 kg (47,258 lb.)              | 23 316 kg (51,403 lb.)              |
| <b>Optional Components</b>  |                                      |                                      |                                     |                                     |
| Cab with Pressurizer and Heater/Air Conditioner   | 337 kg (743 lb.)*                    | 337 kg (743 lb.)*                    | 337 kg (743 lb.)*                   | 337 kg (743 lb.)*                   |
| Heater (ROPS canopy)  | 39 kg (85 lb.)                       | 39 kg (85 lb.)                       | 39 kg (85 lb.)                      | 39 kg (85 lb.)                      |
| <b>Front and Door Screens</b>   |                                      |                                      |                                     |                                     |
| ROPS Canopy   | 84 kg (186 lb.)                      | 84 kg (186 lb.)                      | 84 kg (186 lb.)                     | 84 kg (186 lb.)                     |
| Cab with Air Conditioner  | 79 kg (175 lb.)                      | 79 kg (175 lb.)                      | 79 kg (175 lb.)                     | 79 kg (175 lb.)                     |
| <b>Rear Screen</b>  |                                      |                                      |                                     |                                     |
| ROPS Canopy   | 23 kg (50 lb.)                       | 23 kg (50 lb.)                       | 23 kg (50 lb.)                      | 23 kg (50 lb.)                      |
| Cab with Air Conditioner  | 34 kg (75 lb.)                       | 34 kg (75 lb.)                       | 34 kg (75 lb.)                      | 34 kg (75 lb.)                      |
| <b>Side Screens</b>   |                                      |                                      |                                     |                                     |
| ROPS Canopy   | 44 kg (98 lb.)                       | 44 kg (98 lb.)                       | 44 kg (98 lb.)                      | 44 kg (98 lb.)                      |
| Cab with Air Conditioner  | 54 kg (120 lb.)                      | 54 kg (120 lb.)                      | 54 kg (120 lb.)                     | 54 kg (120 lb.)                     |
| Condenser Guard (cab with air conditioner)  | 55 kg (121 lb.)                      | 55 kg (121 lb.)                      | 55 kg (121 lb.)                     | 55 kg (121 lb.)                     |
| <b>Limb Risers (ROPS canopy and cab)</b>  |                                      |                                      |                                     |                                     |
| Heavy-Duty Grille   | 35 kg (78 lb.)*                      | 35 kg (78 lb.)*                      | 35 kg (78 lb.)*                     | 35 kg (78 lb.)*                     |
| Lift-Cylinder Guards  | 42 kg (93 lb.)*                      | 42 kg (93 lb.)*                      | 80 kg (176 lb.)*                    | 80 kg (176 lb.)*                    |
| Tank Guards   | 323 kg (712 lb.)*                    | 323 kg (712 lb.)*                    | 323 kg (712 lb.)*                   | 323 kg (712 lb.)*                   |
| <b>Counterweight</b>  |                                      |                                      |                                     |                                     |
| Front   | 397 kg (875 lb.)                     | 397 kg (875 lb.)                     | 397 kg (875 lb.)                    | 397 kg (875 lb.)                    |
| Rear  | 449 kg (990 lb.)                     | 449 kg (990 lb.)                     | 449 kg (990 lb.)                    | 449 kg (990 lb.)                    |
| Retrieval Hitch   | 52 kg (114 lb.)                      | 52 kg (114 lb.)                      | 52 kg (114 lb.)                     | 52 kg (114 lb.)                     |
| Drawbar, Extended Rigid   | 130 kg (286 lb.)                     | 130 kg (286 lb.)                     | 130 kg (286 lb.)                    | 130 kg (286 lb.)                    |
| Blade Brush Guard   | 87 kg (192 lb.)                      | 87 kg (192 lb.)                      | 87 kg (192 lb.)                     | 87 kg (192 lb.)                     |
| Blade Trash Rack  | 198 kg (436 lb.)*                    | 210 kg (462 lb.)*                    | 207 kg (455 lb.)*                   | 226 kg (498 lb.)*                   |
| Full-Length Rock Guards   | 242 kg (534 lb.)                     | 242 kg (534 lb.)                     | 222 kg (490 lb.)                    | 242 kg (534 lb.)                    |
| Final-Drive Trash Guards  | 70 kg (155 lb.)*                     | 70 kg (155 lb.)*                     | 70 kg (155 lb.)*                    | 70 kg (155 lb.)*                    |
| <b>Striker Bars</b>   |                                      |                                      |                                     |                                     |
| Front   | 73 kg (160 lb.)                      | 73 kg (160 lb.)                      | 111 kg (245 lb.)                    | 147 kg (325 lb.)                    |
| Rear  | 78 kg (171 lb.)                      | 78 kg (171 lb.)                      | 166 kg (366 lb.)                    | 78 kg (171 lb.)                     |
| <b>Pre-Cleaner</b>  |                                      |                                      |                                     |                                     |
| Powered Cab Air   | 21 kg (47 lb.)*                      | 21 kg (47 lb.)*                      | 21 kg (47 lb.)*                     | 21 kg (47 lb.)*                     |
| Rotary Ejector Engine Air   | 6 kg (13 lb.)*                       | 6 kg (13 lb.)*                       | 6 kg (13 lb.)*                      | 6 kg (13 lb.)*                      |
| <b>Track Shoes</b>  |                                      |                                      |                                     |                                     |
| 560-mm (22 in.) Extreme-Duty  | - 684 kg (- 1,507 lb.)               | —                                    | - 608 kg (- 1,340 lb.)              | —                                   |
| 610-mm (24 in.) Moderate-Duty   | —                                    | —                                    | —                                   | —                                   |
| 610-mm (24 in.) Extreme-Duty  | - 513 kg (- 1,131 lb.)               | —                                    | - 456 kg (- 1,005 lb.)              | —                                   |
| 760-mm (30 in.) Moderate-Duty   | —                                    | —                                    | —                                   | —                                   |
| 760-mm (30 in.) Extreme-Duty  | In base                              | - 515 kg (-1,136 lb.)                | In base                             | - 514 kg (-1,133 lb.)               |
| 910-mm (36 in.) Moderate-Duty   | —                                    | —                                    | —                                   | —                                   |
| 910-mm (36 in.) Extreme-Duty  | —                                    | In base                              | —                                   | In base                             |
| Waste-Handler Package Plus Select Optional Equipment Marked With *  | 1479 kg (3,254 lb.)                  | 1578 kg (3,472 lb.)                  | 1477 kg (3,250 lb.)                 | 1632 kg (3,591 lb.)                 |
| <b>Machine Dimensions</b>   |                                      |                                      |                                     |                                     |
| <b>A</b> Overall Height to Roof   | 3161 mm (10 ft. 4.5 in.)             | 3161 mm (10 ft. 4.5 in.)             | 3161 mm (10 ft. 4.5 in.)            | 3161 mm (10 ft. 4.5 in.)            |
| <b>A<sup>1</sup></b> Overall Height with Optional Cab Air Pre-cleaner   | 3457 mm (11 ft. 4.0 in.)             | 3457 mm (11 ft. 4.0 in.)             | 3457 mm (11 ft. 4.0 in.)            | 3457 mm (11 ft. 4.0 in.)            |
| <b>B</b> Tread Depth with Single-Bar Grouser  |                                      |                                      |                                     |                                     |
| Moderate Duty   | 66 mm (2.6 in.)                      | 66 mm (2.6 in.)                      | 66 mm (2.6 in.)                     | 66 mm (2.6 in.)                     |
| Extreme Duty  | 71 mm (2.8 in.)                      | 71 mm (2.8 in.)                      | 71 mm (2.8 in.)                     | 71 mm (2.8 in.)                     |
| <b>C</b> Ground Clearance in Dirt   | 409 mm (16.1 in.)                    | 409 mm (16.1 in.)                    | 409 mm (16.1 in.)                   | 409 mm (16.1 in.)                   |
| <b>D</b> Overall Length   | 5740 mm (226 in.)<br>(18 ft. 10 in.) | 5740 mm (226 in.)<br>(18 ft. 10 in.) | 5384 mm (212 in.)<br>(17 ft. 8 in.) | 5940 mm (234 in.)<br>(19 ft. 6 in.) |
| <b>E</b> Blade Lift Height  | 1072 mm (42 in.)                     | 1072 mm (42 in.)                     | 1151 mm (45 in.)                    | 1151 mm (45 in.)                    |
| <b>F</b> Blade Digging Depth  | 704 mm (28 in.)                      | 704 mm (28 in.)                      | 599 mm (24 in.)                     | 599 mm (24 in.)                     |
| <b>G</b> Blade Cutting-Edge Angle, Adjustable   | 55.1 to 60.2 deg.                    | 55.1 to 60.2 deg.                    | 51.5 to 61.0 deg.                   | 51.5 to 61.0 deg.                   |

| Machine Dimensions <i>(continued)</i>    | 850K WLT<br><i>Power-Angle-Tilt (PAT) Blade</i> | 850K LGP                             | 850K WT<br><i>Outside Dozer (OSD) Blade</i> | 850K LGP                            |
|--|---|--------------------------------------|---|-------------------------------------|
| <b>H</b> Blade Width                     | 4013 mm (158 in.)<br>(13 ft. 2 in.)             | 4267 mm (168 in.)<br>(14 ft. 0 in.)  | 3556 mm (140 in.)<br>(11 ft. 8 in.)         | 3861 mm (152 in.)<br>(12 ft. 8 in.) |
| <b>I</b> Blade Height                    | 1829 mm (72 in.) (6 ft. 0 in.)                  | 1829 mm (72 in.) (6 ft. 0 in.)       | 1981 mm (78 in.) (6 ft. 6 in.)              | 1930 mm (76 in.) (6 ft. 4 in.)      |
| <b>J</b> Blade Angle                     | 23.8 deg.                                       | 23.8 deg.                            | —   | —                                   |
| <b>K</b> Overall Width with Blade Angled | 3658 mm (144 in.)<br>(12 ft. 0 in.)             | 3901 mm (154 in.)<br>(12 ft. 10 in.) | —   | —                                   |
| <b>L</b> Blade Tilt                      | 533 mm (21 in.) (1 ft. 9 in.)                   | 572 mm (23 in.) (1 ft. 11 in.)       | 753 mm (30 in.) (2 ft. 6 in.)               | 853 mm (34 in.) (2 ft. 10 in.)      |
| <b>M</b> Cut Reach                       | 145 mm (5.7 in.)                                | 109 mm (4.3 in.)                     | —   | —                                   |
| <b>N</b> Width Over Track                | 2997 mm (118 in.)<br>(9 ft. 10 in.)             | 3302 mm (130 in.)<br>(10 ft. 10 in.) | 2794 mm (110 in.)<br>(9 ft. 2 in.)          | 3099 mm (122 in.)<br>(10 ft. 2 in.) |
| <b>O</b> Cast Reach                      | 272 mm (10.7 in.)                               | 234 mm (9.2 in.)                     | —   | —                                   |



| Rear Ripper   | 850K WLT / 850K LGP<br><i>Power-Angle-Tilt (PAT) Blade</i> | 850K WT / 850K LGP<br><i>Outside Dozer (OSD) Blade</i> |
|---|--|--|
| Multi-shank (3) parallelogram ripper with hydraulic pitch adjustment and ESCO ripper tips |  |  |
| Weight  | 2032 kg (4,480 lb.)  | 2032 kg (4,480 lb.)                                    |
| <b>P</b> Maximum Penetration  | 724 mm (28.5 in.)  | 724 mm (28.5 in.)                                      |
| <b>Q</b> Maximum Clearance Under Tip  | 610 mm (24 in.)  | 610 mm (24 in.)  |
| <b>R</b> Overall Length, Lowered Position   | 1626 mm (64 in.) (5 ft. 4 in.)                             | 1626 mm (64 in.) (5 ft. 4 in.)                         |
| <b>R'</b> Overall Length, Raised Position   | 1525 mm (60 in.) (5 ft. 0 in.)                             | 1525 mm (60 in.) (5 ft. 0 in.)                         |
| <b>S</b> Overall Beam Width   | 2400 mm (7 ft. 10 in.)                                     | 2400 mm (7 ft. 10 in.)                                 |
| <b>T</b> Slope Angle (full raise)   | 24 deg.  | 24 deg.  |
| <b>U</b> Ripping Width  | 2146 mm (7 ft. 1 in.)                                      | 2146 mm (7 ft. 1 in.)                                  |
| <b>V</b> Distance Between Shanks  | 1041 mm (41 in.) (3 ft. 5 in.)                             | 1041 mm (41 in.) (3 ft. 5 in.)                         |



# Additional equipment

Key: ● Standard ▲ Optional or special

See your John Deere dealer for further information.

| 850K             |  |
|------------------|--|
| WH               | Engine   |
| ●                | Meets EPA Interim Tier 4/EU Stage IIIB emissions                 |
| ●                | Electronic control with automatic engine protection              |
| ●                | Vacuum-aspirated dual-element dry canister                       |
| ●                | Exhaust filter under hood with vertical stack                    |
| ●                | Engine glow plug starting system                                 |
| ▲                | Chrome exhaust   |
| ▲                | Severe-duty 400ml fuel filter and heated water separator         |
| ●                | Rotary ejector engine air precleaner                             |
| ▲                | Engine block heater  |
| Cooling          |  |
| ●                | Tilt-out suction-type cooling fan                                |
| ●                | Programmable fan reversal with manual override                   |
| ●                | Engine coolant radiator, coolant/air, 10 fins per inch (25.4 mm) |
| ●                | Hydrostatic cooler, oil/air, 10 fins per inch (25.4 mm)          |
| ●                | Hydraulic cooler, oil/air, 10 fins per inch (25.4 mm)            |
| ●                | Enclosed safety fan guard (conforms to SAE J1308 and ISO3457)    |
| ●                | Perforated engine and hood side shields                          |
| ●                | Tilt-out bar-type heavy-duty grille                              |
| ●                | Extreme-duty grille  |
| Hydraulic System |  |
| ●                | 2-function hydraulics  |
| ▲                | 3-function hydraulics  |
| ▲                | 4-function hydraulics with rear plumbing                         |
| ▲                | High-flow hydraulic pump and hydraulic cooler for use with winch |
| ▲                | Integrated Grade Control (IGC) hydraulics                        |
| ●                | Lift cylinder hose guards  |

| 850K          |  |
|---------------|--|
| WH            | Mainframe, Access Panels   |
| ●             | Tilt operator station transmission access                                |
| ●             | Front tow loops  |
| ●             | Integral bottom protection   |
| ●             | Hinged bottom access covers (bolt-on)                                    |
| ●             | Vandal protection for all service doors, all tanks, and instrument panel |
| ●             | Tank guards  |
| Undercarriage |  |
| ●             | Oscillating undercarriage with maintenance-free center crossbar pivot    |
| ●             | Full-length, smooth-surface track frame covers                           |
| ●             | Front and rear chain guides with bolt-on wear strips                     |
| ●             | Segmented sprockets  |
| ●             | Double-flange rollers  |
| ▲             | Extended Life undercarriage with SC-2™ bushings                          |
| ▲             | Full-length rock guards  |
| ●             | Final-drive trash guards   |
| ▲             | Recessed sprockets   |
| ▲             | 762-mm (30 in.) extreme-service shoes with trapezoidal holes             |
| ▲             | 914-mm (36 in.) extreme-service shoes with trapezoidal holes             |
| Service       |  |
| ●             | Remote transmission diagnostic test ports                                |
| ●             | Environmental service drains   |
| ▲             | Fluid-sample valves  |
| ▲             | Fast-fuel system   |
| ▲             | Quick-service ports  |
| ▲             | Rear storage compartment   |
| Attachments   |  |
| ▲             | Retrieval hitch with pin   |
| ▲             | Extended rigid drawbar with pin for pull-type implements                 |
| ▲             | Rear counterweight, 327 kg (720 lb.)                                     |
| ▲             | Rear counterweight, 454 kg (1,000 lb.)                                   |
| ▲             | Ripper, rear, 3 shank  |
| ▲             | Winch, hydrostatically driven  |
| ▲             | Blade trash rack   |

| 850K |  |
|------|--|
| WH   | Cab — Operator's Station and Electrical  |
| ●    | Retractable seat belts, 76 mm (3 in.) (conform to SAE J386)  |
| ●    | Convex interior rearview mirror, 102-mm (4-in.) tall, 203-mm (8-in.) wide (conforms to SAE J985)                           |
| ●    | Power port, console-mounted, 12 volts  |
| ▲    | Second console-mounted power port, 12 volts  |
| ●    | Lockable dash-mounted storage compartment  |
| ●    | Air conditioner, 24,000 Btu  |
| ●    | Heater (roof mount)  |
| ●    | Under-seat heater  |
| ●    | Tinted glass   |
| ●    | Dome light   |
| ●    | Air-ride fabric seat   |
| ▲    | Heated air-ride fabric seat  |
| ●    | Independently operable wipers (intermittent plus 2 speeds) with washers – front and rear windows, and left and right doors |
| ●    | AM/FM/weather-band radio with auxiliary input, roof-mounted  |
| ●    | Storage compartment next to radio with power port  |
| ▲    | External-mounted rear-attachment mirror  |
| ●    | Sealed alternator, cab 130 amps, canopy 100 amps   |
| ●    | Master electrical disconnect switch  |
| ●    | Lights, grille mounted (2) and rear facing (2)   |
| ●    | Additional lights, roof-mounted (2), forward-facing  |
| ●    | JDLINK™ Ultimate wireless communication system (available in specific countries; see your dealer for details)              |
| ▲    | Powered cab-air precleaner   |

Net engine power is with standard equipment including air cleaner, exhaust system, alternator, and cooling fan at test conditions per ISO9249. No derating is required up to 3050-m (10,000 ft.) altitude. Also available: winches, fairleads, log arches, skidding grapples, trash packages, landfill protection packages, cable plows, side booms, field-installed cab for canopy, canopy heater, and fire-suppression systems. Specifications and design subject to change without notice. Wherever applicable, specifications are in accordance with SAE standards. Except where otherwise noted, these specifications are based on a unit with rollover protective structure, full fuel tank, 79-kg (175 lb.) operator, and standard equipment. Operator station ROPS and FOPS certified.

