

Guarding

Brandt

**HARD
TO THE
CORE**





MEET YOUR MATCH!

There's no room in your fleet for equipment that doesn't stand up to extreme punishment. That's why we build products that are **Hard To The Core** — the toughest, most innovative and hard-working lineup of attachments and task-specific wholegoods solutions on earth.

Maximize the safety of your operators and equipment with **Hard To The Core** Brandt guarding solutions. They have earned their reputation as the toughest in the industry — delivering uncompromised quality, performance, and safety in the most extreme working environments on earth. We manufacture them from premium materials; built to the highest standard and optimized for your John Deere equipment.

Whatever your guarding need, Brandt has already built the ideal solution, OR we'll work with you to create a custom application that will deliver powerful value for your business and will keep you a step ahead of the competition.

You can always rely on **Hard To The Core** Brandt attachments to deliver superior performance for all your heavy equipment needs, because when all is said and done, nobody works harder than Brandt to keep you productive and profitable.

That's Powerful Value. Delivered.





CRAWLER DOZER GUARDING

Easy-to-install Brandt guarding packages provide outstanding machine protection and operator safety while maintaining excellent sight lines. These guarding packages are ideal for oil & gas, waste handling, forestry or any other harsh environments.



Heavy Duty Guarding (HD)

Brandt HD Guarding delivers the unrivalled protection your operators need to work confidently in the most challenging environments. The toughest guarding in the industry, this package is purpose-built to meet or exceed the most rigorous regulations.

Features/Benefits:

- Heavy-duty FOPS (Falling Object Protective Structures) with limb risers keeps branches away from the cab during brush clearing operations and protects the cab from falling objects.
- Robust design utilizes 1/4" round bar woven into a mesh screen to deliver exceptional visibility and maximum operator protection.
- Thick steel grill guard delivers superior protection, maximizing uptime in the toughest conditions.



FOPS with Limb Riser

Side Window Guards

Door Guards

Rear Window Guard

Blade Spill Guard Extension

Cab Steps

Hydraulic Guards

Grill Guard

General Purpose Guarding (GP)

Brandt GP Guarding provides a versatile guarding solution to cover your basic safety needs for most applications. And, this package utilizes factory bolt locations to minimize drilling for fast installation.

Features/Benefits:

- Engineered hole pattern makes each hole the maximum allowable size as per safety standards for optimum visibility.
- Laser-cut 3/16" mesh steel provides exceptional visibility without compromising operator protection.
- Hinged full-width rear screen enables easy access and can be used as an emergency exit.



Limb Riser

Side Window Guards

Door Guards

Rear Window Guard

Front Window Guard

EXCAVATOR GUARDING



Excavator Guarding

Brandt excavator guarding delivers heavy-duty protection with clear sightlines, making it easy for you to dig safely. This guarding package includes a thicker under-house guard and stump pan than competitors' designs to maximize your uptime.

Features/Benefits:

- Full-perimeter handrail kits are available to enclose the engine platform for maximum operator safety while performing maintenance.
- FOPS window guards are optimized for maximum visibility without compromising operator protection.
- Front screen is now available in multiple jailhouse or lexan glass configurations, allowing the screen to be optimized for the need of each jobsite.



Falling Object Protective Structures (FOPS)



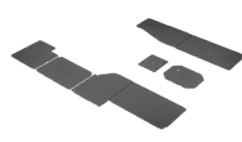
Falling Object Guarding (FOG)



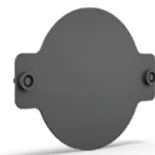
Front Window Guard



Deere Walks



Underhouse Guards



Stump Pan



Hand Rails

WHEEL LOADER GUARDING



Wheel Loader Guarding

Brandt wheel loader guarding delivers extreme protection and clear visibility. This simple-to-install guarding package is ideal for forestry, oil & gas, waste handling, or material handling in any other harsh environments.

Features/Benefits:

- Front window guard was rigorously tested and meets the stringent BCWCB standards, so operators work with confidence.
- Thick steel radiator guard protects critical components, keeping costly downtime to a minimum.
- Jailhouse-style 3/4" round bar window guards deliver an excellent strength-to-weight ratio to protect the operator without sacrificing visibility.



Front Window Guard



Front Hinged Window Guard



Radiator Guard



Side Window Guards



Rear Window Guard



For more information:

Call us at **1-844-3bucket (1-844-328-2538)**

Email us at **beslorderdesk@brandt.ca**

Or visit us at **www.brandt.ca**

PO Box 1876, 302 Mill Street

Regina, SK, Canada

S4P 3E1

The Brandt Group of Companies — headquartered in Regina, Saskatchewan, Canada — is comprised of Brandt Agricultural Products, Brandt Engineered Products, Brandt Equipment Solutions, Brandt Road Rail, Brandt Positioning Technology, Brandt Truck Rigging & Trailers, Brandt Finance, Brandt Developments Ltd., Brandt Road Technology, Brandt Mineral Technology, and Brandt Tractor Ltd. — the world's largest privately-owned John Deere Construction & Forestry equipment dealer. Brandt has over 100 locations in Canada and the U.S., over 3,400 employees, and a growing international audience; serving the construction, forestry, agriculture, rail, mining, steel, and energy industries with unique custom products. Brandt is one of Canada's largest privately-owned companies and is among an elite group of Platinum Club members of Canada's Best Managed Companies.

© Brandt Industries Canada Ltd. and Brandt Industries USA Ltd. All rights reserved.

Brandt and Brandt logo are trademarks of Brandt Industries Canada Ltd. and Brandt Industries USA Ltd., used under license.

All product information and specifications are subject to change without notification. Printed in Canada. Revised 10/2020

Powerful Value. **Delivered.**

The Brandt logo features three vertical red bars of varying heights on the left, followed by the word "Brandt" in a bold, white, italicized sans-serif font.