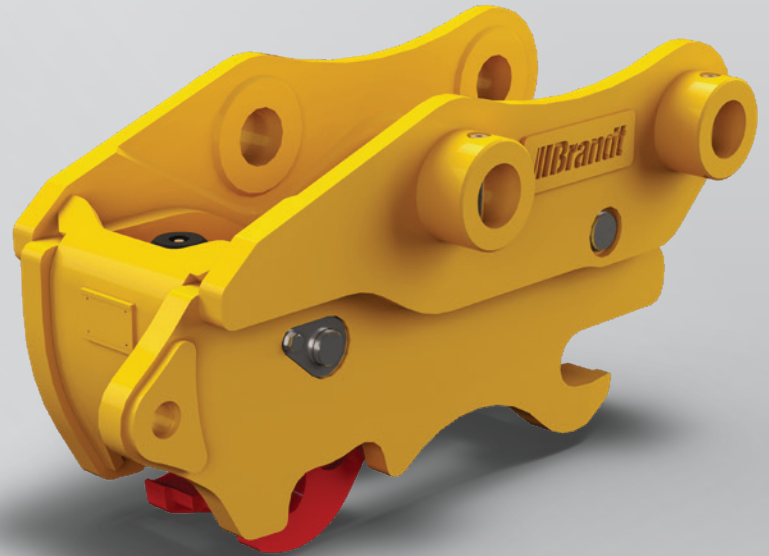




MODELS
80 Series –
400 Series



Variable Pin Grabber Coupler

Get a Solid Grip on Safety.

The all-new variable pin grabber coupler from Brandt uses two locking mechanisms to keep your attachment in the working position at all times. Its robust design utilizes fewer moving parts for superior reliability, all while meeting the rigorous ISO 13031, EN 474, and AS 4772 safety standards.

① Safety

This coupler delivers a strong connection that you can count on, no matter what:

- Locking wedge keeps the rear pin secured in the event of hydraulic failure without relying on gravity, preventing a swinging attachment.
- Hydraulic check valve maintains pressure in the cylinders in the event of hydraulic hose breakage until proper function is restored.
- Rear latch supports the locking wedge in securing the pin, ensuring a safe, reliable connection to the attachment.
- Hydraulic interlock requires the coupler to be fully curled towards the cab in order to be disengaged, preventing accidental attachment drops.

② Productivity

This coupler is faster and easier to operate, enabling you to accomplish more:

- Cycle times are faster than the competition, saving valuable time with each transition between attachments.
- Bevelled front-pin hooks adjust to the attachment, enabling perfect alignment for faster, easier connections.
- Integrated lifting hook is designed to match the capability of the excavator, maximizing this coupler's utility.

③ Flexibility

The variable pin system allows you to tackle whatever the job throws at you:

- Multi-pin design enables compatibility with any OEM pin specs within the same machine series for the ultimate in flexibility.
- Versatile connection enables attachments to be coupled in forward and reverse orientations, making it easy to dig in hard-to-reach areas.
- Fully-compatible with Brandt pin-grabber-specific buckets and thumbs to take on a wider range of tasks.

VARIABLE PIN-GRABBER COUPLER FEATURES

Audible Buzzer and Lights

Keeps the operator informed of when the coupler is unlocked.

Brightly-coloured

Rear Lock

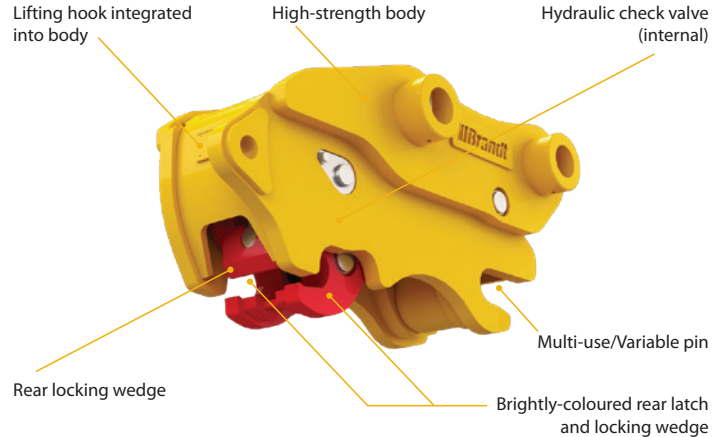
Give the operator clear visual confirmation of proper engagement from the cab.

High-strength Steel Body

Utilizes a lightweight yet robust design to maximize the life of the coupler.

Heavy-duty Torsion Spring

Uses simple, reliable design to make maintenance and operation easy.



MODELS

80 SERIES

PN: 1101560

Coupler Weight	258 lb
Min. Width (between bucket)	6.57"
Pin Diameter	1.97" & 2.36"
50 mm Pin Spread	11.02" - 12.48"
60 mm Pin Spread	11.42" - 12.60"

150 SERIES

PN: 1101561

Coupler Weight	685 lb
Min. Width (between bucket)	10.90"
Pin Diameter	2.75" & 3.15"
70 mm Pin Spread	14.80" - 18.58"
80 mm Pin Spread	15.39" - 18.78"

250 SERIES

PN: 1101567

Coupler Weight	1,100 lb
Min. Width (between bucket)	12.83"
Pin Diameter	3.15" & 3.54"
80 mm Pin Spread	17.44" - 20.47"
90 mm Pin Spread	18.03" - 20.66"

400 SERIES

PN: 1101570

Coupler Weight	1,760 lb
Min. Width (between bucket)	14.64"
Pin Diameter	3.54" & 3.93"
100 mm Pin Spread	21.14" - 24.08"
110 mm Pin Spread	21.34" - 25.00"

120 SERIES

PN: 1101563

Coupler Weight	475 lb
Min. Width (between bucket)	8.70"
Pin Diameter	2.36" & 2.56"
60 mm Pin Spread	13.58" - 16.33"
65 mm Pin Spread	13.97" - 16.53"

200 SERIES

PN: 1101566

Coupler Weight	844 lb
Min. Width (between bucket)	12.08"
Pin Diameter	3.15"
80 mm Pin Spread	16.93" - 20.47"

300 SERIES

PN: 1101568

Coupler Weight	1,340 lb
Min. Width (between bucket)	13.62"
Pin Diameter	3.54" & 3.93"
90 mm Pin Spread	18.98" - 23.70"
100 mm Pin Spread	19.69" - 23.90"

For more information:

Call us at **1-844-3bucket (1-844-328-2538)**

Email us at beslorderdesk@brandt.ca

Or visit us at www.brandt.ca

Brandt Equipment Solutions

PO Box 1876, 302 Mill Street

Regina, SK, Canada

S4P 3E1

