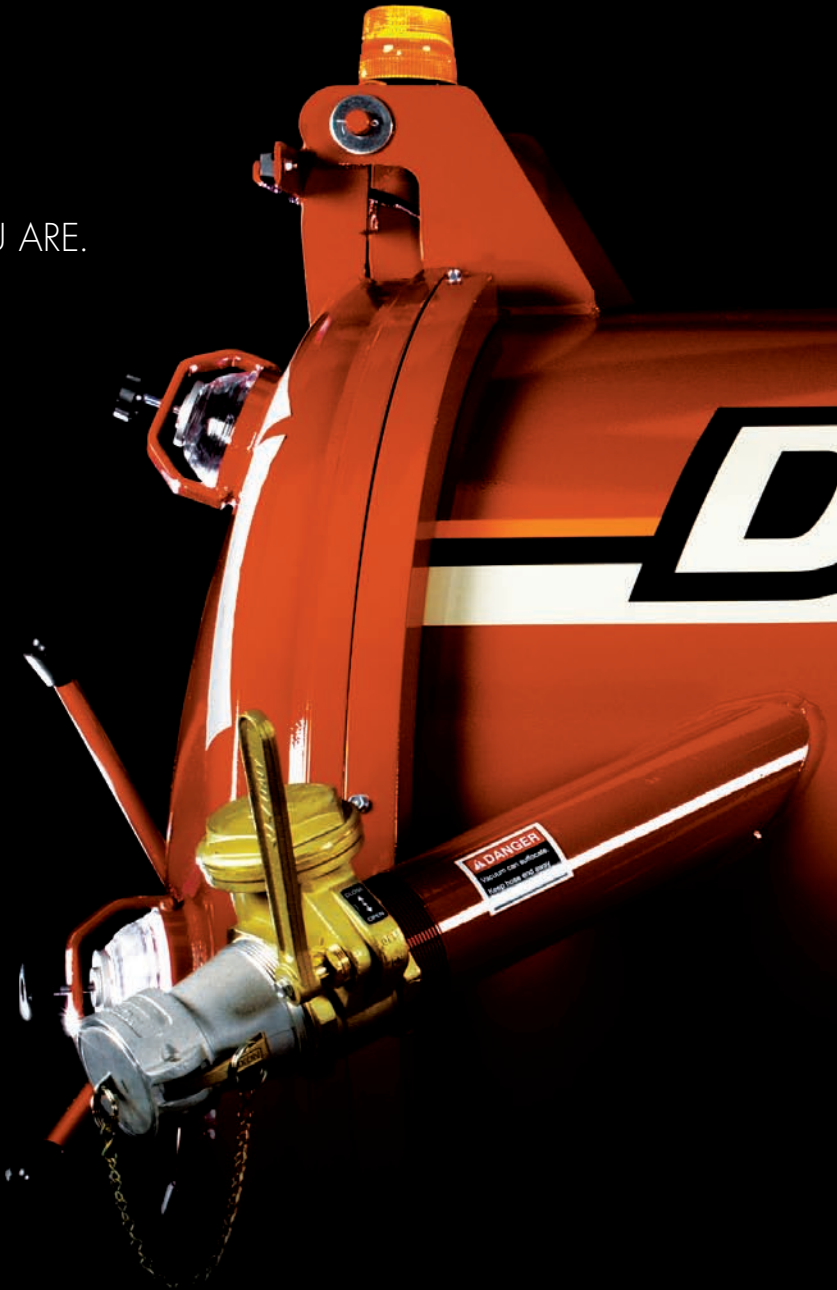
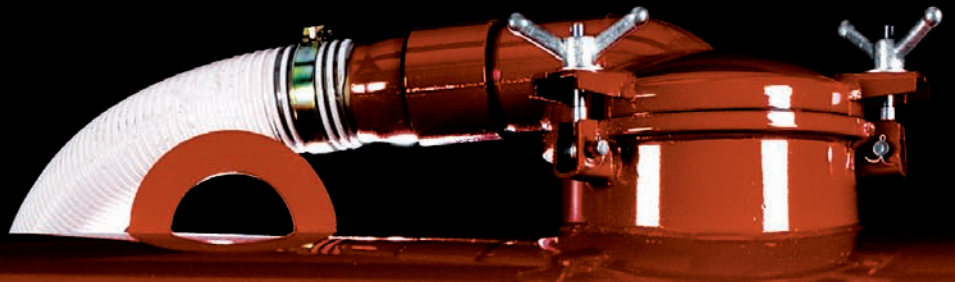


 DITCH WITCH FX60, FX30, FX20
VACUUM EXCAVATORS



COME OUT, COME OUT, WHATEVER YOU ARE.





Ditch Witch®

800 GAL



11/11/11

DITCH WITCH FX60, FX30 Vacuum Excavation Systems

The FX60 and FX30 are not only the quietest and most productive vacuum excavation systems you'll ever experience, they're also the most personal. You pick the tank size, horsepower, and options, and we build your vac system to suit your task list: exposing buried utility lines, cleaning out storm drain and catch basins, HDD site cleanup, and more.





A



B



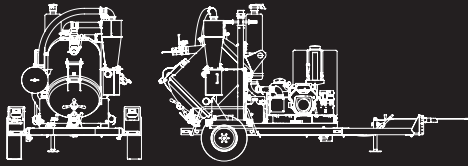
KEY FEATURES

- The FX60 (82 dBA) and FX30 (73 dBA) are the quietest vacs in their class, so you can operate almost anywhere, including noise-sensitive residential and urban areas.
- Choice of vac tank sizes to handle virtually any size job (see last page for details).
- (Photograph A) Saddle-style freshwater tanks give the 1200-gallon FX60 a lower center of gravity, making it easy to pull just about anywhere.
- (Photograph B) Fully enclosed, insulated and lockable power pack protects major components from weather and vandalism while leading the industry in noise reduction.
- Full-opening rear door with single-point latch makes dumping spoils easy.
- Water pressure can be adjusted from a curbside operator's station that allows one-person control of all unit functions.
- Reusable, single-element vacuum filter and a blower relief valve air filter provide the industry's best filtration.
- Autoclutching feature disengages the water pump when water is not in use, allowing full system power for suction.
- Either system may be ordered from the factory trailer-mounted or stand-alone, so you can mount it on your own trailer or flatbed truck.

DITCH WITCH FX20 Vacuum Excavation System

The FX20 is ideal for a wide range of small projects and multiple short runs per day: small municipal projects such as valve box cleanout, commercial and residential debris cleanup and landscaping, exposing utility lines, posthole digging, and many other relatively small tasks. The 27-hp (20.1 kW) FX20 has the suction power of the larger FX30, yet it can be easily transported with a pickup truck.





SPECIFICATIONS

DIMENSIONS

	U.S.	METRIC
Length	174 in	4.42 m
Height	93 in	2.36 m
Width	86 in	2.18 m

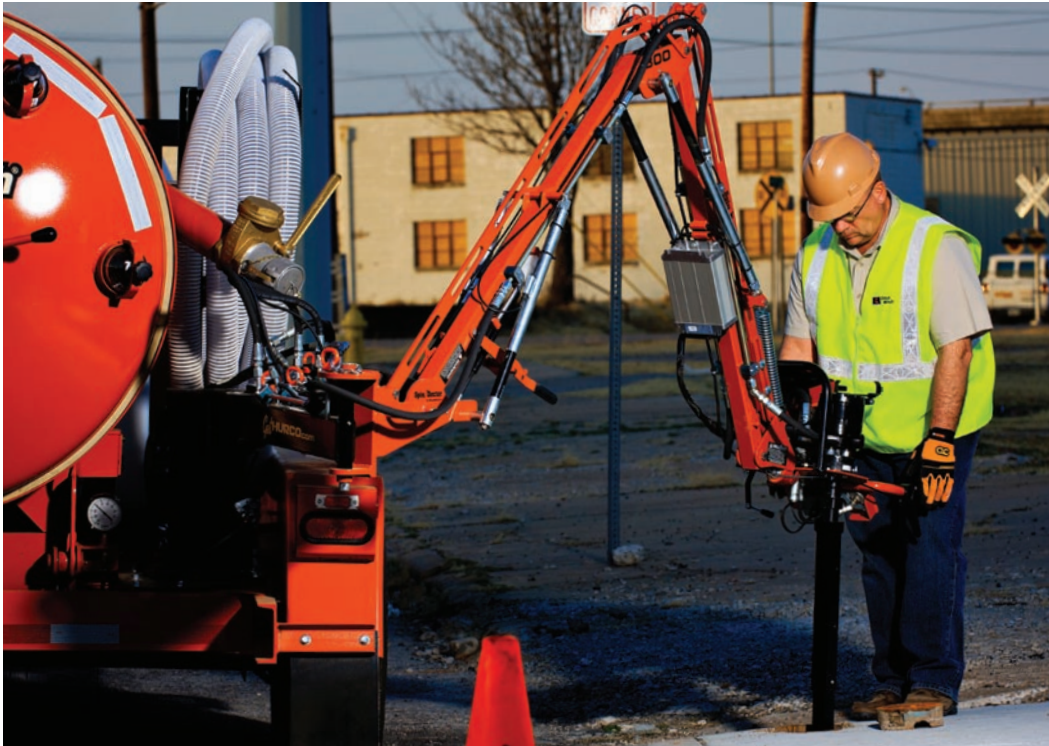


KEY FEATURES

- (Photograph A) The skid-mounted FX20 can fit in the back of a pickup truck, on a flatbed trailer or a specially designed Ditch Witch® trailer; in many cases no CDL is required.
- (Photograph B) 150-gallon (568 L) vac tank is mounted permanently at a 45° angle, making the dumping cycle quick and easy.
- Outstanding suction power of 540 cfm (15.3 m³/min) in a compact, extremely durable package.
- Belt-driven blower makes the FX20 more reliable and easier to maintain.
- Exclusive non-contact water shutoff switch protects the water pump and eliminates the potential leaks of a float switch, which requires holes to be drilled in the side of the tank.
- Triple filtration system with a cyclone separator cleans the air before it ever reaches the filter, minimizing maintenance.
- Curbside operator's console is designed to make controls easily accessible; for custom applications, the console can be positioned on either side of the unit.
- The FX20 is equipped with a 27-hp (20.1 kW) Kohler® gas engine that is renowned for its reliability and ease of maintenance.

DITCH WITCH Valve Exerciser

Your city water valves and hydrants must be exercised at least once a year—a task performed with unmatched ease and convenience with a Ditch Witch® vacuum excavator plus hydraulic valve exerciser. It sets up quickly so you can exercise more valves and hydrants per day. With our computerized model, you can record all of the exerciser's activities, saving you time and labor for data input and retrieval and helping you quickly import work orders, more accurately operate valves and hydrants, capture GPS, and create numerous reports.



KEY FEATURES

- Best-in-class range of motion—270-degree turning radius, 10-ft (3 m) reach—so you can access hard-to-reach valves and hydrants without repositioning the vehicle.
- Fingertip control reduces operator fatigue.
- Innovative design absorbs torque when turning the valve or hydrant, which reduces risk of damage caused by slamming of the valve or hydrant, a common problem with rigidly mounted exercisers.
- Lightweight but incredibly strong steel boom is field-proven to handle the toughest valves and is backed by a limited lifetime warranty.
- Rugged construction results in outstanding durability, day after day, year after year.
- Compact size allows the unit to be easily transported to locations close to water valves and hydrants.
- Water diffuser helps prevent erosion or damage to property.
- Easy-to-read pressure gauge displays ft-lbs of torque, so there is no need for a reference chart to convert pressure to torque.

DITCH WITCH FX Options

Given the immense range of tasks that a Ditch Witch vacuum excavator can do, there's really no such thing as a "standard" vacuum excavator. Each can be configured in any way you choose. Trailer- or skid-mounted, or no mounting at all? With or without the reverse-flow option? Working up north? You could probably use a tank heater. What accessories would make your life easier: hose reels, hose extensions, lawn sweepers? Your Ditch Witch dealer has all of your answers. Find a dealer near you at ditchwitch.com/find-a-dealer.



HYDRAULIC VAC BOOMS

- An excellent hose-handling solution designed to save labor, time, and minimize operator fatigue.
- Equipped with an easy-access cleanout door to help clear obstructions or clogs.
- Boom rotates 340 degrees and is easily maneuvered with a tethered, handheld control.
- Dimensions/range
 - Retracted length: 9 ft (2.7 m)
 - Full extension: 4 ft (1.2 m)
 - Working range: 5 ft (1.5 m) to 9 ft (2.7 m) off the trailer



HYDRAULIC TANK DOORS

- Designed for easy spoils removal and maintenance.
- Hydraulic lifting and lowering capability.
- Standard feature with 1200-gallon model; optional with 500- and 800-gallon models.

HYDRAULIC POWER SOURCE

- Available on FX30 and FX60 models.
- Powers a variety of jobsite tools, everything from impact wrenches to jackhammers.

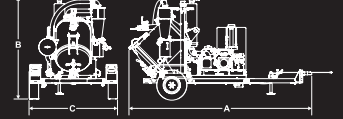
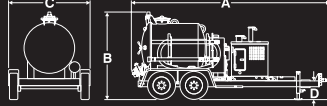


VAC TANKS

- FX20 150-gallon (568 L)
- FX30 500-gallon (1893 L)
- FX30 800-gallon (3028 L)
- FX60 300-gallon (1136 L)
- FX60 500-gallon (1893 L)
- FX60 800-gallon (3028 L)
- FX60 1200-gallon (4543 L)

WATER TANKS

- FX20 80-gallon (303 L)
- FX30 80-gallon (303 L)
- FX30 200-gallon (757 L)
- FX30 300-gallon (1136 L)
- FX60 80-gallon (303 L)
- FX60 200-gallon (757 L)
- FX60 300-gallon (1136 L)
- FX60 500-gallon (1893 L)
or two 250-gallon (946 L) tanks



SPECIFICATIONS

FX60/1200

FX30/800

FX20

DIMENSIONS	U.S.		METRIC		U.S.	METRIC		U.S.	METRIC	
	A LENGTH	245 IN	6.22 M	233 IN		4.88 M	174 IN		4.42 M	
C WIDTH	100.5 IN	2.55 M	100.5 IN	2.59 M	86 IN	2.18 M				
B HEIGHT	99 IN	2.52 M	92 IN	2.34 M	93 IN	2.36 M				
WEIGHT										
DRY WEIGHT	11,230 LB	5094 KG	8255 LB	3744 KG	2576 LB	1168 KG				
VAC TANK FULL, WATER TANK FULL	24,480 LB	11 104 KG	14,797 LB	6712 KG	4233 LB	1920 KG				
VAC TANK FULL, WATER TANK EMPTY	21,120 LB	9580 KG	N/A		3583 LB	1625 KG				
WATER TANK FULL, VAC TANK EMPTY	15,300 LB	6940 KG	N/A		3160 LB	1433 KG				
TRAILER GVWR	26,000 LB	11 793 KG	18,000 LB	8172 KG	4500 LB	2041 KG				
TONGUE WEIGHT										
EMPTY	2450 LB	1111 KG	1964 LB	891 KG	406 LB	184 KG				
VAC TANK FULL, WATER TANK FULL	3100 LB	1406 KG	1474 LB	669 KG	563 LB	255 KG				
VAC TANK FULL, WATER TANK EMPTY	2700 LB	1225 KG	N/A		303 LB	137 KG				
WATER TANK FULL, VAC TANK EMPTY	2800 LB	1270 KG	N/A		660 LB	299 KG				
AXLE RATING (EACH)	12,000 LB	5443 KG	8000 LB	3632 KG	4500 LB	2041 KG				
DIMENSIONS (SKID PACKAGE)										
LENGTH	N/A		N/A		109 IN	2.77 M				
WIDTH	N/A		N/A		63 IN	1.6 M				
HEIGHT	N/A		N/A		74 IN	1.88 M				
WEIGHT										
DRY WEIGHT	N/A		N/A		1594 LB	723 KG				
VAC TANK FULL, WATER TANK FULL	N/A		N/A		3374 LB	1530 KG				
VAC TANK FULL, WATER TANK EMPTY	N/A		N/A		2724 LB	1236 KG				
WATER TANK FULL, VAC TANK EMPTY	N/A		N/A		2244 LB	1018 KG				
POWER										
ENGINE TYPE	CUMMINS B3.3NA		KUBOTA D1105-T-E3B		KOHLER CH740S					
FUEL TYPE	DIESEL		DIESEL		UNLEADED GASOLINE					
COOLING MEDIUM	LIQUID		LIQUID		AIR					
INJECTION	INDIRECT		INDIRECT		CARBURETOR					
ASPIRATION	NATURAL		TURBOCHARGED		NATURAL					
NUMBER OF CYLINDERS	4		3		2					
DISPLACEMENT	199 IN ³	3.3 L	68.6 IN ³	1.12 L	44 IN ³	725 ML				
BORE	3.74 IN	95 MM	3.07 IN	78 MM	3.27 IN	83 MM				
STROKE	4.53 IN	115 MM	3.09 IN	78.5 MM	2.64 IN	67 MM				
MANUFACTURER'S GROSS POWER RATING (SAE J1995)	60 HP	45 KW	32.8 HP	24.5 KW	N/A					
MANUFACTURER'S GROSS POWER RATING (SAE J1940)	N/A		N/A		27 HP	20.1 KW				
ESTIMATED NET POWER RATING (SAE J1349)	56 HP	41.8 KW	31.5 HP	23.5 KW	N/A					
RATED SPEED	2200 RPM		3000 RPM		3600 RPM					
EMISSIONS COMPLIANCE	EPA TIER 4I	EU STAGE IIIA	EPA TIER 4I	EU STAGE IIIA	N/A					
FUEL TANK CAPACITY	19 GAL	72 L	15 GAL	57 L	10 GAL	38 L				

SPECIFICATIONS

FX60/1200

FX30/800

FX20

	U.S.	METRIC	U.S.	METRIC	U.S.	METRIC
VACUUM SYSTEM						
BLOWER DISPLACEMENT	900 CFM	25.5 M ³ /MIN	576 CFM	16.3 M ³ /MIN	540 CFM	15.3 M ³ /MIN
DRIVE TYPE	BELT		BELT		BELT	
MAXIMUM VACUUM	16 IN HG	406 MM HG	15 IN HG	381 MM HG	15 IN HG	381 MM HG
HOSE SIZE (STANDARD)	4 IN	102 MM	3 IN	76 MM	3 IN	76 MM
VACUUM TANK CAPACITY	1200 GAL	4543 L	800 GAL	3028 L	150 GAL	568 L
FULL-OPENING REAR DOOR DIAMETER	62 IN	1.58 M	52 IN	1.32 M	32 IN	813 MM
OUTLET VALVE SIZE	6 IN	152 MM	6 IN	152 MM	4 IN	102 MM
TANK INLET VALVE SIZE	4 IN	102 MM	4 IN	102 MM	4 IN	102 MM
TANK DUMP ANGLE (MAX/FIXED)	50°		45°		45°	
PRIMARY SHUTOFF (BALL TYPE)	12 IN	305 MM	12 IN	305 MM	4 IN	102 MM
FILTER TYPE	WASHABLE POLYESTER		WASHABLE POLYESTER		WASHABLE POLYESTER	
FILTER AREA	100 FT ²	9.3 M ²	100 FT ²	9.3 M ²	74 FT ²	6.9 M ²
WATER TRAP CAPACITY	8 GAL	30.3 L	8 GAL	30.3 L	4.5 GAL	17 L
SUCTION HOSE 4 IN (2 SECTIONS)	50 FT	15.2 M	N/A		N/A	
SUCTION HOSE 3 IN (2 SECTIONS)	N/A		30 FT	9.1 M	25 FT	7.6 M
WATER SYSTEM						
WATER TANK CAPACITY	80, 200, 300 OR 500 GAL		200 OR 300 GAL	758 L	80 GAL	303 L
WATER PUMP FLOW	5.2 GPM	23.6 L/MIN	4.2 GPM	16 L/MIN	2.6 GPM	9.8 L/MIN
WATER PUMP PRESSURE (MAX)	3500 PSI	241 BAR	3000 PSI	207 BAR	3000 PSI	207 BAR
PUMP CLUTCH	ELECTRIC WITH ANTIFREEZE AND AUTO DECLUTCH FEATURE		ELECTRIC WITH ANTIFREEZE AND AUTO DECLUTCH FEATURE		ELECTRIC WITH AUTO DECLUTCH AND LOW WATER SHUT-DOWN FEATURE	
HOSE LENGTH	50 FT	15.3 M	50 FT	15.3 M	50 FT	15.3 M
HYDRAULIC SYSTEM						
12V DC POWER UNIT RESERVOIR SIZE	15 GAL	57 L	2 GAL	7.6 L	N/A	
PRESSURE	2500 PSI	172 BAR	2500 PSI	172 BAR	N/A	
TANK DUMP CYLINDERS (1)	4 IN	102 MM	N/A		N/A	
TANK DUMP CYLINDERS (2)	N/A		3 IN	76 MM	N/A	
FLOW RATE	7.2 GPM	36 LPM	N/A		N/A	
	CURBSIDE HYDRAULIC MANIFOLD WITH MANUAL SELECTOR VALVE					
BATTERY						
GROUP	12V		12V		12V	
SAE RESERVE CAPACITY RATING	800 AMPS		800 AMPS		340 AMPS	
SAE COLD CRANK RATING @ 0° F (-18° C)	180 MIN		180 MIN		41 MIN	
NOISE LEVEL						
SOUND POWER	108 DBA		103 DBA		110 DBA	
SOUND PRESSURE AT OPERATOR EAR 10 FT (3 M) BEHIND VACUUM TANK	82 DBA		73 DBA		84 DBA	
TOOLS						
	WASH WAND; 4" LIGHTWEIGHT SUCTION WAND; 4" COMBINATION POTHOLING TOOL		WASH WAND; 3" LIGHTWEIGHT SUCTION WAND; 3" COMBINATION POTHOLING TOOL		WASH WAND; 3" LIGHTWEIGHT SUCTION WAND	
OTHER						
	TWO WORK LIGHTS, TWO 12V OUTLETS ON CURB SIDE OF UNIT; LOCKABLE CURBSIDE CONTROLS; REMOTE ENGINE OIL DRAIN; REMOTE RADIATOR DRAIN		AMBER D.O.T. STROBE LIGHT; TWO WORK LIGHTS; LOCKABLE CURBSIDE CONTROLS; REMOTE ENGINE OIL DRAIN; REMOTE RADIATOR DRAIN		N/A	



THE CHARLES MACHINE WORKS, INC. DITCH WITCH WORLDWIDE HEADQUARTERS PERRY, OK 73077-0066 U.S.A.

TOLL FREE 800 654 6481 PHONE 580 336 4402 FAX 580 336 3458 INTERNATIONAL FAX 580 572 3561

FOR INFORMATION ON DITCH WITCH FINANCIAL SERVICES, GIVE US A CALL

TO FIND THE DEALER NEAREST YOU, VISIT DITCHWITCH.COM

GROUNDBREAKING™ EQUIPMENT FROM THE COMPANY THAT LAUNCHED THE INDUSTRY

COMPACT UTILITY | TRENCHERS | HDD | ELECTRONICS



Know what's below.
Call before you dig.

CERTIFIED QUALITY
MANAGEMENT SYSTEM
ISO 9001:2000

LFCMWC104501-0909-1