



DITCH WITCH RT115, RT115 QUAD, HT115, RT95, RT80

# RT/HT TRACTORS



FEEL THE EARTH MOVE.

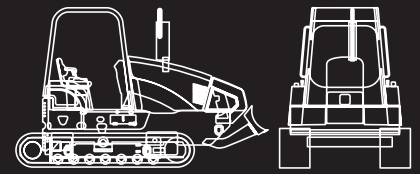
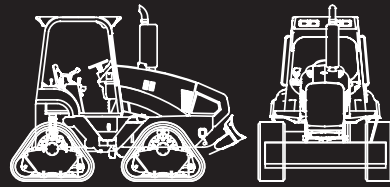




## **DITCH WITCH RT115, RT115 QUAD, HT115**

With the RT115, RT115 Quad, and HT115 you get plenty of choices and one common denominator: power. These rugged machines are turbocharged with 115-horsepower (85.8 kW) John Deere engines and reliable hydrostatic transmissions to keep them running strong all day long. Work lights are among the machines' many options, so they can go all night, too.





## KEY FEATURES

- (Photograph A) The RT115 Quad's heavy-duty undercarriage is built for durability and long life, and its innovative chevron track pattern provides maximum traction in wet conditions and on slopes.
- Large selection of hydrostatic attachments—plus a choice of two front-mount utility backhoes and a reel carrier—accelerate your productivity.
- Four-post Rollover Protective System (ROPS) includes a canopy; options include enclosed cab and climate control system (RT115 with rubber tires only) and work lights.
- Standard four-wheel drive and optional four-wheel steering make the RT115 the ideal heavy-duty tractor for both paved and off-road work.
- Removable side panels provide easy access to service areas; engine service points are conveniently located on the left side, and the oil level can be checked without opening the engine enclosure.
- When you need extra pull, the RT115 Quad's three-speed, shift-on-the-fly ground drive senses load conditions and automatically adjusts for maximum performance.
- (Photograph B) The HT115 features AutoTrack (an easy-to-use track drive system) and can be equipped with rubber tracks for urban jobs or steel tracks for off-road applications.

## DITCH WITCH RT95 Heavy-Duty Tractor

The Ditch Witch® RT95 has the power and maneuverability to help you accomplish any task. Aboard the RT95 you feel in total control because you are. Your control extends to your choice of transmission: hydrostatic, which offers infinitely variable speeds from zero to maximum forward; or powershift, which gives you “on-the-go” shifting and no clutching.





## SPECIFICATIONS

### DIMENSIONS

	U.S.	METRIC
Length	148 in	3.76 m
Height	111 in	2.82 m
Width	82 in	2.08 m



## KEY FEATURES

- (Photograph A) Solid backfill blade lift arms and cast blade pivot increase structural strength of the backfill components.
- (Photograph B) Planetary axles with locking differentials make maximum use of torque at the wheel and offer high ground clearance.
- Four-point tiedown system (one at each corner of the machine) allows for secure attachment to the trailer.
- Multiple attachment options: powershift model accepts a centerline or double-pivot trencher, front-mounted backhoe and reel carrier; hydrostatic model accepts a centerline and traversing trencher, vibratory plow, combination trencher/plow, saw, front-mounted backhoe and reel carrier.
- Molded hydraulic and fuel tanks make more efficient use of available space and are enclosed in a steel cradle.
- Ergonomically designed operator station includes a 90° swivel seat, adjustable armrests, easy-to-read gauges, and a tiltable steering column.
- Standard four-wheel drive helps provide superb traction and mobility in all kinds of jobsite conditions and applications.
- Optional cruise control system (with hydrostatic model only) automatically adjusts the ground speed to changing soil conditions.

## **DITCH WITCH RT80 Heavy-Duty Tractor**

Tight spaces and tight deadlines—two of your biggest concerns, both addressed thoroughly by one extremely powerful, fast, and efficient trencher. The compact footprint and exceptional power of the RT80 help you dig trenches where large trenchers dare not go. After experiencing its tremendous power to the digging attachment, though, you won't restrict the RT80 to small jobsites.







## SPECIFICATIONS

### DIMENSIONS

	U.S.	METRIC
Length	129 in	3.28 m
Height	97 in	2.46 m
Width	76 in	1.93 m



A

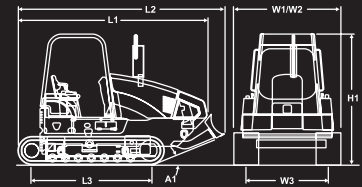
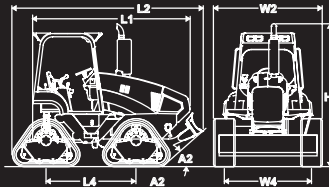
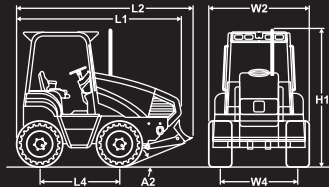


B



## KEY FEATURES

- With the RT80's compact footprint and turbocharged, 83-gross-hp (62 kW) Deutz diesel engine, you can do big jobs in small places.
- *(Photograph A)* Four combinations of torque and speed provide the power you need, when you need it, to tackle a variety of terrain with the RT80's traversing trencher and backhoe attachments.
- Standard cruise control enables you to maintain optimal digging performance regardless of ground conditions.
- Top speed of 9.9 mph (15.9 km/h) makes the RT80 the fastest trencher in its class, which saves you time getting on and off jobsites.
- Optional rear steering feature gives the RT80 a tighter turn radius and better maneuverability when you're on a tight jobsite.
- Fuel it and forget it: the RT80's 30-gallon (114-liter) fuel tank helps ensure that the RT80 runs for hours without stopping.
- Advanced cooling system you can depend on to keep the engine running in top form throughout the workday.
- *(Photograph B)* Plenty of big-tractor operator station comforts like an easy-to-read gauge panel and a 90° swivel seat with adjustable height.
- Ditch Witch® trenchers, including the RT80, are the only trenchers in the world that come standard with genuine Ditch Witch chain, teeth, and sprockets; they dig harder and last longer than any other digging system on the market.



## SPECIFICATIONS

### RT115

### RT115 QUAD

### HT115

DIMENSIONS	U.S.	METRIC	U.S.	METRIC	U.S.	METRIC
A2 ANGLE OF APPROACH	25°		34°		15°	
H1 HEIGHT, TO HIGHEST POINT	111 IN	2.82 M	117 IN	2.97 M	102.5 IN	2.6 M
L1 LENGTH, NOSE TO REAR MOUNT	128 IN	3.25 M	128 IN	3.25 M	130 IN	3.3 M
L2 LENGTH, TRACTOR TRANSPORT	148 IN	3.76 M	160 IN	4.06 M	139 IN	3.53 M
L4 WHEELBASE	73 IN	1.85 M	73 IN	1.85 M	N/A	
W1 WIDTH (STEEL TRACKS)	N/A		N/A		84 IN	2.13 M
W2 WIDTH (RUBBER TRACKS/TIRES)	82 IN	2.08 M	89 IN	2.26 M	82 IN	2.08 M
W3/W4 TRACK GAUGE/TREAD	64 IN	1.63 M	71 IN	1.8 M	65.3 IN	1.66 M
<b>OPERATION</b>						
<b>FORWARD SPEEDS</b>						
LOW/LOW	0.6 MPH	0.9 KM/H	2.1 MPH	3.4 KM/H	2.6 MPH	4.2 KM/H
LOW/HIGH	1.2 MPH	2 KM/H	N/A		N/A	
HIGH/LOW	4.2 MPH	6.8 KM/H	4 MPH	6.4 KM/H	N/A	
HIGH/HIGH	9 MPH	14.5 KM/H	7.2 MPH	11.6 KM/H	4.5 MPH	7.2 KM/H
<b>REVERSE SPEEDS</b>						
LOW/LOW	0.3 MPH	0.5 KM/H	2.1 MPH	3.4 KM/H	2.6 MPH	4.2 KM/H
LOW/HIGH	0.7 MPH	1.1 KM/H	N/A		N/A	
HIGH/LOW	2.8 MPH	4.5 KM/H	4.0 MPH	6.4 KM/H	N/A	
HIGH/HIGH	6 MPH	9.6 KM/H	4.2 MPH	6.8 KM/H	4.5 MPH	7.2 KM/H
<b>GROUND PRESSURE</b>						
STEEL TRACKS	N/A		N/A		5.8 PSI	0.4 BAR
RUBBER TRACKS	N/A		N/A		6.2 PSI	0.4 BAR
<b>VEHICLE CLEARANCE CIRCLE (SAE), WALL-TO-WALL, W/BACKFILL BLADE</b>						
FRONT STEER ONLY	31 FT	9 M	39.5 FT	12 M	15.6 FT	4.75 M
COORDINATED STEER	21 FT	6 M	27 FT	8.2 M	N/A	
<b>BASIC UNIT WEIGHT</b>						
	7980 LB	3620 KG	15,240 LB	6913 KG	12,000 LB	5443 KG
<b>MAXIMUM ALLOWABLE TRACTOR WEIGHT</b>						
	18,100 LB	8210 KG	22,800 LB	10 340 KG	22,000 LB	9979 KG
<b>FRONT COUNTERWEIGHT</b>						
	2100 LB	950 KG	2100 LB	950 KG	2100 LB	950 KG
<b>GROUND CLEARANCE</b>						
	14 IN	356 MM	15.5 IN	394 MM	11.5 IN	292 MM
<b>BACKFILL BLADE</b>						
BLADE WIDTH	80 IN	2.03 M	80 IN	2.03 M	80 IN	2.03 M
BLADE HEIGHT	17 IN	430 MM	17 IN	430 MM	17 IN	430 MM
LIFT HEIGHT, ABOVE GROUND	21 IN	530 MM	26 IN	660 MM	21 IN	530 MM
BLADE DROP, BELOW GROUND	11 IN	280 MM	10 IN	254 MM	11 IN	280 MM
MAXIMUM SWING ANGLE, LEFT/RIGHT	30°		30°		30°	
TILT ANGLE, UP/DOWN	24°		24°		24°	
<b>POWER</b>						
ENGINE	JOHN DEERE 4045HF285		JOHN DEERE 4045HF285		JOHN DEERE 4045HF285	
FUEL	DIESEL		DIESEL		DIESEL	
COOLING MEDIUM	LIQUID		LIQUID		LIQUID	
INJECTION	DIRECT		DIRECT		DIRECT	
ASPIRATION	TURBOCHARGED & CHARGE AIR COOLED		TURBOCHARGED & CHARGE AIR COOLED		TURBOCHARGED & CHARGE AIR COOLED	
CYLINDERS	4		4		4	
DISPLACEMENT	275 IN <sup>3</sup>	4.5 L	275 IN <sup>3</sup>	4.5 L	275 IN <sup>3</sup>	4.5 L
BORE	4.19 IN	106 MM	4.19 IN	106 MM	4.19 IN	106 MM
STROKE	5 IN	127 MM	5 IN	127 MM	5 IN	127 MM
MANUFACTURER'S GROSS POWER RATING*	115 HP	86 KW	115 HP	86 KW	115 HP	86 KW
ESTIMATED NET POWER RATING**	103 HP	77 KW	103 HP	77 KW	103 HP	77 KW
RATED SPEED	2400 RPM		2400 RPM		2400 RPM	
<b>ENGINE TILT ANGLES, MAXIMUM</b>						
LONGITUDINAL	30°		30°		30°	
LATERAL	30°		30°		30°	
EMISSIONS COMPLIANCE	EPA TIER 3	EU STAGE IIIA	EPA TIER 3	EU STAGE IIIA	EPA TIER 3	EU STAGE IIIA

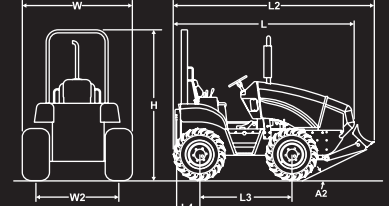
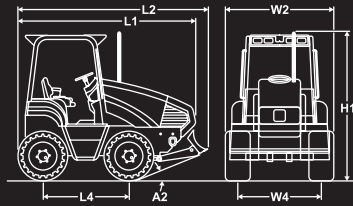
## SPECIFICATIONS

## RT115

## RT115 QUAD

## HT115

	U.S.	METRIC	U.S.	METRIC	U.S.	METRIC
<b>POWER TRAIN</b>						
GROUND DRIVE TRANSMISSION	HYDROSTATIC		HYDROSTATIC		HYDROSTATIC, JOYSTICK WITH AUTOTRACK	
ATTACHMENT DRIVE TRANSMISSION	HYDROSTATIC, LEVER-OPERATED, SPEED INFINITELY VARIABLE FROM ZERO TO MAXIMUM		HYDROSTATIC		HYDROSTATIC, LEVER-OPERATED, SPEED INFINITELY VARIABLE FROM ZERO TO MAXIMUM	
DIFFERENTIALS	PLANETARY FRONT AND REAR WITH OPTIONAL REAR STEERING		PLANETARY FRONT AND REAR WITH REAR STEERING		N/A	
SERVICE BRAKE	DISC, FOOT-OPERATED		HYDROSTATIC		N/A	
PARKING BRAKE	DISC, HAND-OPERATED		DISC, HAND-OPERATED		SPRING-APPLIED, PRESSURE-RELEASED	
TIRES/PRESSURE (38 X 18.00-20, 14-PLY BAR LUG FLOTATION)	72 PSI	3.1 BAR	N/A		N/A	
TRACKS	N/A		450 X 86 X 42, RUBBER, CHEVRON PATTERN		STEEL OR RUBBER	
<b>HYDRAULIC SYSTEM</b>	<b>@ 2400 RPM</b>		<b>@ 2400 RPM</b>		<b>@ 2400 RPM</b>	
<b>GROUND DRIVE</b>						
PUMP CAPACITY	29.2 GPM	110.5 L/MIN	51.5 GPM	195 L/MIN	33.6 GPM	127.2 L/MIN
PUMP RELIEF PRESSURE	5000 PSI	345 BAR	6200 PSI	427.5 BAR	2500 PSI	172.4 BAR
MOTOR DISPLACEMENT H/L (2)	N/A		N/A		3.35/1.8 IN <sup>3</sup>	55/29.5 CM <sup>3</sup>
MOTOR PRESSURE (2)	N/A		N/A		6000 PSI	413.7 BAR
<b>ATTACHMENT</b>						
PUMP CAPACITY	48 GPM	182 L/MIN	51.5 GPM	195 L/MIN	48 GPM	182 L/MIN
PUMP RELIEF PRESSURE	6090 PSI	420 BAR	6200 PSI	427.5 BAR	6090 PSI	420 BAR
<b>AUXILIARY</b>						
PUMP CAPACITY	12.5 GPM	47.3 L/MIN	14.96 GPM	56.6 L/MIN	12.5 GPM	47.3 L/MIN
PUMP RELIEF PRESSURE	2500 PSI	172 BAR	3300 PSI	227.5 BAR	2500 PSI	172 BAR
<b>FLUID CAPACITIES</b>						
FUEL TANK	38 GAL	144 L	38 GAL	144 L	45 GAL	170 L
ENGINE OIL	16 QT	15 L	16 QT	15 L	16 QT	15 L
HYDRAULIC RESERVOIR	24 GAL	91 L	20 GAL	76 L	20 GAL	76 L
HYDRAULIC SYSTEM	29 GAL	110 L	25 GAL	95 L	32 GAL	121 L
COOLING SYSTEM	18 QT	16.8 L	18 QT	16.8 L	25 QT	24 L
<b>BATTERY</b>						
GROUP	65		65		65	
SAE RESERVE CAPACITY RATING	165 MIN		165 MIN		165 MIN	
SAE COLD CRANK RATING @ 0° F (-18° C)	875 AMPS		875 AMPS		875 AMPS	
AUXILIARY POWER OUTLET	12V, 10 AMPS		12V, 10 AMPS		12V, 10 AMPS	



## SPECIFICATIONS

### RT95

### RT80<sup>†</sup>

DIMENSIONS	U.S.	METRIC	U.S.	METRIC
A <sup>2</sup> ANGLE OF APPROACH	25°		22°	
H <sup>1</sup> HEIGHT	111 IN	2.82 M	97 IN	2.46 M
L <sup>1</sup> LENGTH, NOSE TO REAR MOUNT	128 IN	3.25 M	114 IN	2.9 M
L <sup>2</sup> LENGTH, TRANSPORT	148 IN	3.76 M	129 IN	3.28 M
L <sup>4</sup> WHEELBASE	73 IN	1.85 M	60 IN	1.53 M
W <sup>2</sup> WIDTH	82 IN	2.08 M	76 IN	1.93 M
W <sup>4</sup> TREAD	64 IN	1.63 M	58 IN	1.46 M
<b>OPERATION</b>				
<b>WITH HYDROSTATIC TRANSMISSION</b>				
FORWARD SPEEDS				
LOW/LOW	0.6 MPH	0.9 KM/H	2.4 MPH	3.9 KM/H
LOW/HIGH	1.2 MPH	2 KM/H	3.8 MPH	6.1 KM/H
HIGH/LOW	4.2 MPH	6.8 KM/H	6.8 MPH	10.9 KM/H
HIGH/HIGH	9 MPH	14.5 KM/H	9.9 MPH	16.9 KM/H
REVERSE SPEEDS				
LOW/LOW	0.3 MPH	0.5 KM/H	1 MPH	1.6 KM/H
LOW/HIGH	0.7 MPH	1.1 KM/H	1.6 MPH	2.6 KM/H
HIGH/LOW	2.8 MPH	4.5 KM/H	3.1 MPH	5 KM/H
HIGH/HIGH	6 MPH	9.6 KM/H	4.5 MPH	7.2 KM/H
<b>WITH POWERSHIFT TRANSMISSION</b>				
FORWARD SPEEDS				
LOW/LOW	0.4 MPH	0.7 KM/H	N/A	
HIGH/LOW	6.2 MPH	9.9 KM/H	N/A	
HIGH/HIGH	9.1 MPH	14.7 KM/H	N/A	
REVERSE SPEEDS				
LOW/LOW	0.4 MPH	0.7 KM/H	N/A	
HIGH/LOW	6.2 MPH	9.9 KM/H	N/A	
HIGH/HIGH	9.1 MPH	14.7 KM/H	N/A	
VEHICLE CLEARANCE CIRCLE (SAE), WALL-TO-WALL, W/BACKFILL BLADE				
FRONT STEER ONLY	31 FT	9 M	33.5 FT	10.2 M
COORDINATED STEER	21 FT	6 M	21.5 FT	6.5 M
BASIC UNIT WEIGHT	7980 LB	3620 KG	5880 LB	2667 KG
MAXIMUM ALLOWABLE TRACTOR WEIGHT	18,100 LB	8210 KG	13,100 LB	5942 KG
FRONT COUNTERWEIGHT	2100 LB	950 KG	1915 LB	870 KG
GROUND CLEARANCE	14 IN	355 MM	11.6 IN	294 MM
<b>BACKFILL BLADE<sup>†</sup></b>				
BLADE WIDTH	80 IN	2.03 M	72 IN	1.83 M
BLADE HEIGHT	17 IN	430 MM	14 IN	355 MM
LIFT HEIGHT, ABOVE GROUND	21 IN	530 MM	19 IN	480 MM
BLADE DROP, BELOW GROUND	11 IN	280 MM	12 IN	305 MM
MAXIMUM SWING ANGLE, LEFT/RIGHT	30°		30°	
TILT ANGLE, UP/DOWN	24°		16°	

## SPECIFICATIONS

## RT95

## RT80

	U.S.	METRIC	U.S.	METRIC
<b>POWER</b>				
ENGINE	JOHN DEERE 4045HF280		DEUTZ TD2011L04W	
FUEL	DIESEL		DIESEL	
COOLING MEDIUM	LIQUID		LIQUID	
INJECTION	DIRECT		DIRECT	
ASPIRATION	TURBOCHARGED & CHARGE AIR COOLED		TURBOCHARGED	
CYLINDERS	4		4	
DISPLACEMENT	275 IN <sup>3</sup>	4.5 L	221 IN <sup>3</sup>	3.62 L
BORE	4.19 IN	106 MM	3.78 IN	96 MM
STROKE	5 IN	127 MM	4.92 IN	125 MM
MANUFACTURER'S GROSS POWER RATING*	99 HP	74 KW	83 HP	62 KW
ESTIMATED NET POWER RATING**	88 HP	66 KW	78 HP	58.2 KW
RATED SPEED	2400 RPM		2600 RPM	
EMISSIONS COMPLIANCE	EPA TIER 3	EU STAGE IIIA	EPA TIER 3	EU STAGE IIIA
<b>POWER TRAIN</b>				
GROUND DRIVE TRANSMISSION	HYDROSTATIC OR POWERSHIFT		HYDROSTATIC	
ATTACHMENT DRIVE TRANSMISSION	HYDROSTATIC, LEVER-OPERATED, SPEED INFINITELY VARIABLE FROM ZERO TO MAXIMUM, POWERSHIFT WITH LIMITED STROKE REVERSE.		HYDROSTATIC, ELECTRIC LEVER-OPERATED SPEED, INFINITELY VARIABLE FROM ZERO TO MAXIMUM	
DIFFERENTIALS	PLANETARY FRONT AND REAR WITH OPTIONAL REAR STEERING		PLANETARY FRONT AND REAR WITH OPTIONAL REAR STEERING	
SERVICE BRAKE	DISC, FOOT-OPERATED		DISC, FOOT-OPERATED	
PARKING BRAKE	DISC, HAND-OPERATED		MANUAL LEVER DRUM BRAKE	
TIRES/PRESSURE				
31 X 15.50-15, 8-PLY BAR LUG	N/A		40 PSI	2.8 BAR
35 X 19.00-16.1, 12-PLY BAR LUG	N/A		55 PSI	3.8 BAR
38 X 18.00-20, 14-PLY BAR LUG FLOTATION	72 PSI	3.1 BAR	N/A	
<b>HYDRAULIC SYSTEM</b>	<b>@2400 RPM</b>		<b>@2600 RPM</b>	
<b>WITH HYDROSTATIC TRANSMISSION</b>				
PUMP CAPACITY				
GROUND DRIVE	29.2 GPM	110.5 L/MIN	31 GPM	117 L/MIN
ATTACHMENT	48 GPM	182 L/MIN	31 GPM	117 L/MIN
AUXILIARY	12.5 GPM	47.3 L/MIN	14 GPM	53 L/MIN
PUMP RELIEF PRESSURE				
GROUND DRIVE	5000 PSI	345 BAR	5500 PSI	380 BAR
ATTACHMENT	6090 PSI	420 BAR	5500 PSI	380 BAR
AUXILIARY	2500 PSI	172 BAR	3000 PSI	207 BAR
<b>WITH POWERSHIFT TRANSMISSION</b>				
PUMP CAPACITY				
GROUND DRIVE	9.1 GPM	34 L/MIN	N/A	
AUXILIARY	12.5 GPM	47 L/MIN	N/A	
PUMP RELIEF PRESSURE				
GROUND DRIVE	4000 PSI	276 BAR	N/A	
AUXILIARY	2500 PSI	172 BAR	N/A	
<b>FLUID CAPACITIES</b>				
FUEL TANK	38 GAL	144 L	30 GAL	114 L
ENGINE OIL, W/FILTER	16 QT	15 L	16 QT	15 L
HYDRAULIC RESERVOIR	24 GAL	91 L	12 GAL	45 L
HYDRAULIC SYSTEM	29 GAL	110 L	20 GAL	76 L
COOLING SYSTEM	17 QT	16 L	17 QT	16 L
TRANSMISSION FLUID (POWERSHIFT ONLY)	9.5 QT	10.5 L	N/A	
<b>BATTERY</b>				
GROUP	34H		75U	
SAE RESERVE CAPACITY	120 MIN		110 MIN	
SAE COLD CRANK RATING @ 0° F (-18° C)	800 AMPS		800 AMPS	
AUXILIARY POWER OUTLET	12V, 10 AMPS		12V, 10 AMPS	

# RT115, RT115 QUAD, HT115, RT95, RT80 ATTACHMENTS LEGEND

- RT115 Attachment
- RT115 Quad Attachment
- HT115 Attachment
- RT95 Attachment
- RT80 Attachment

## A523 BACKHOE

DIMENSIONS	U.S.	METRIC
TRANSPORT HEIGHT	108.5 IN	2.8 M
GROUND CLEARANCE	31.6 IN	803 MM
BACKHOE LENGTH, STOWED	57.2 IN	1.5 M
DIGGING DEPTH, MAXIMUM	94.5 IN	2.4 M
OPERATING HEIGHT, FULLY RAISED	147.2 IN	3.8 M
REACH FROM SWING PIVOT	142.2 IN	3.6 M
BUCKET		
WIDTH	12-18 IN	305-460 MM
CAPACITY	1.7-2.6 FT <sup>3</sup>	50-70 MM <sup>3</sup>
WEIGHT WITH 12-IN BUCKET	2150 LB	975 KG
SWING ARC	170°	

## A720 BACKHOE

DIMENSIONS	U.S.	METRIC
TRANSPORT HEIGHT	111 IN	2.82 M
GROUND CLEARANCE	27 IN	690 MM
DIGGING DEPTH, MAXIMUM	92 IN	2.31 M
REACH FROM SWING PIVOT	143 IN	3.63 M
TRANSPORT LENGTH, STOWED	122 IN	3.1 M
BUCKET WIDTH	12-24 IN	305-610 MM
BACKHOE WEIGHT WITHOUT BUCKET	2975 LB	1350 KG
SWING ARC	180°	

## A920 BACKHOE

DIMENSIONS	U.S.	METRIC
TRANSPORT HEIGHT	118 IN	2.99 M
GROUND CLEARANCE	29 IN	740 MM
DIGGING DEPTH, MAXIMUM	112 IN	2.85 M
REACH FROM SWING PIVOT	158 IN	4.01 M
TRANSPORT LENGTH, STOWED	117 IN	2.97 M
BUCKET WIDTH	12-24 IN	300-610 MM
BACKHOE WEIGHT WITHOUT BUCKET	3300 LB	1497 KG
SWING ARC	180°	
<b>SPECIFIC FOR RT115 QUAD</b>		
TRANSPORT HEIGHT	122 IN	3.1 M
GROUND CLEARANCE	33 IN	838 MM
TRANSPORT LENGTH, STOWED	117 IN	2.97 M
DIGGING DEPTH, MAXIMUM	108 IN	2.74 M
REACH FROM SWING PIVOT	158 IN	4.01 M
BUCKET WIDTH	12-24 IN	300-610 MM
BACKHOE WEIGHT WITHOUT BUCKET	3300 LB	1497 KG
SWING ARC	180°	

## H952 COMBO

PLOW DIMENSIONS	U.S.	METRIC
COVER DEPTH	36 IN	920 MM
OPERATING WEIGHT WITHOUT BOOM, CHAIN, OR PLOW BLADE	3065 LB	1300 KG
TRANSPORT LENGTH	103 IN	2.62 M
<b>TRENCHER DIMENSIONS</b>		
TRENCH DEPTH, MAXIMUM	70 IN	1.78 M
TRENCH WIDTH	6-12 IN	150-300 MM
ANGLE OF DEPARTURE	22°	
TRANSPORT LENGTH	126 IN	3.2 M

## H932 PLOW

DIMENSIONS	U.S.	METRIC
ANGLE OF DEPARTURE, TRANSPORT, 30-INCH BLADE	23°	
COVER DEPTH	36 IN	920 MM
OPERATING WEIGHT, WITHOUT PLOW BLADE	2400 LB	1100 KG
TRANSPORT LENGTH	102 IN	2.59 M

## H1032 PLOW

DIMENSIONS	U.S.	METRIC
ANGLE OF DEPARTURE, TRANSPORT, 30-IN BLADE	24°	
ATTACHMENT LENGTH, FULLY RAISED, NO BLADE	78 IN	1.98 M
COVER DEPTH*	36 IN	914 MM
OPERATING WEIGHT, WITHOUT PLOW BLADE	2600 LB	1179 KG

## RC115 REEL CARRIER

DIMENSIONS	U.S.	METRIC
REEL DIAMETER, MAXIMUM	84 IN	2.13 M
INTERNAL WIDTH	54 IN	1.37 M
CAPACITY	2500 LB	1134 KG
ATTACHMENT WEIGHT WITH SIX 96-LB (44 KG) COUNTERWEIGHTS	1600 LB	726 KG
DISTANCE FROM BACKFILL BLADE TO REEL CARRIER OUTSIDE EDGE	76 IN	1.93 M
<b>SPECIFIC FOR RT115 QUAD</b>		
REEL DIAMETER, MAXIMUM	84 IN	2.13 M
INTERNAL WIDTH	54 IN	1.37 M
CAPACITY	2500 LB	1134 KG
ATTACHMENT WEIGHT WITH SIX 96-LB (44 KG) COUNTERWEIGHTS	1600 LB	726 KG
DISTANCE FROM BACKFILL BLADE TO REEL CARRIER OUTSIDE EDGE	74 IN	1.88 M

## H942 SAW

DIMENSIONS	U.S.	METRIC
TRENCH DEPTH	30 IN	762 MM
ANGLE OF DEPARTURE	23°	
ATTACHMENT WEIGHT	4500 LB	2041 KG
QUANTITY OF BITS		
ON WHEEL (4.5, 6, 8 IN)	70, 80, 110	
TRANSPORT LENGTH, CENTER OF REAR AXLE	115 IN	2.92 M

## H1140 SAW

DIMENSIONS	U.S.	METRIC
TRENCH DEPTH	40 IN	991 MM
ANGLE OF DEPARTURE	21°	
ATTACHMENT WEIGHT	5900 LB	2676 KG
QUANTITY OF BITS		
ON WHEEL (4.5, 6, 8 IN)	70, 80, 110	
TRANSPORT LENGTH, CENTER OF REAR AXLE	125 IN	3.18 M

### SPECIFIC FOR RT115 QUAD

TRENCH DEPTH	40 IN	991 MM
ANGLE OF DEPARTURE	23°	
ATTACHMENT WEIGHT	5900 LB	2676 KG
QUANTITY OF BITS		
ON WHEEL (4.5, 6, 8 IN)	70, 80, 110	
TRANSPORT LENGTH, CENTER OF REAR AXLE	124 IN	3.15 M

## H813 TRENCHER

DIMENSIONS	U.S.	METRIC
ANGLE OF DEPARTURE	25°	
TRENCH DEPTH, MAXIMUM	84 IN	2.13 M
TRENCH WIDTH, MAXIMUM	12 IN	305 MM
TRENCH WIDTH, MINIMUM	6 IN	150 MM
BOOM TRAVEL DOWN	55°	
BOOM TRAVEL UP	51°	
CENTERLINE OF TRENCH		
TO OUTSIDE EDGE, LEFT	23.5-67 IN	600-1700 MM
CENTERLINE OF TRENCH TO		
OUTSIDE EDGE, RIGHT	9-53.5 IN	230-1335 MM
HEADSHAFT HEIGHT, DIGGING CHAIN	29 IN	740 MM
TRANSPORT HEIGHT	122 IN	3.1 M
ATTACHMENT LENGTH, FULLY RAISED	93.5 IN	2.38 M
TRANSPORT LENGTH	102 IN	2.59 M
HEADSHAFT OVERHANG	42 IN	1.07 M
SOIL DISCHARGE REACH, SHORT AUGER	17 IN	430 MM
SOIL DISCHARGE REACH, LONG AUGER	30 IN	760 MM
ATTACHMENT WEIGHT WITH 4-FT (1.2-M) ROLLER BOOM AND 70K CHAIN	2422 LB	1106 KG

## M910 TRENCHER

DIMENSIONS	U.S.	METRIC
ANGLE OF DEPARTURE		
WITH 38 X 18.00-20 TIRES	28°	
TRENCH DEPTH, MAXIMUM		
WITH 38 X 18.00-20 TIRES	97 IN	2.46 M
TRENCH WIDTH	6-24 IN	152-610 MM
TRANSPORT LENGTH	112 IN	2.85 M
ATTACHMENT WEIGHT	1750 LB	794 KG

## M912 TRENCHER

DIMENSIONS	U.S.	METRIC
ANGLE OF DEPARTURE		
WITH 38 X 18.00-20 TIRES	28°	
TRENCH DEPTH, MAXIMUM		
WITH 38 X 18.00-20 TIRES	97 IN	2.46 M
TRENCH WIDTH,		
CENTER POSITION MAXIMUM	6-24 IN	152-610 MM
TRENCH WIDTH,		
OFFSET POSITION MAXIMUM	6-12 IN	152-305 MM
ATTACHMENT WEIGHT, WITHOUT BOOM AND CHAIN	1850 LB	839 KG

## H910 TRENCHER

DIMENSIONS	U.S.	METRIC
ANGLE OF DEPARTURE	28°	
TRENCH DEPTH, MAXIMUM	97 IN	2.46 M
TRENCH WIDTH	6-24 IN	152-610 MM
TRANSPORT LENGTH	112 IN	2.85 M
ATTACHMENT WEIGHT, WITHOUT BOOM AND CHAIN	1750 LB	794 KG

### SPECIFIC FOR RT115 QUAD

ANGLE OF DEPARTURE	30°	
TRENCH DEPTH, MAXIMUM	93 IN	2.36 M
TRENCH WIDTH, MAXIMUM	24 IN	610 MM
TRANSPORT LENGTH	120 IN	3.05 M
ATTACHMENT WEIGHT, WITHOUT BOOM AND CHAIN	1750 LB	794 KG

## H911 TRENCHER

DIMENSIONS	U.S.	METRIC
ANGLE OF DEPARTURE	24.7°	
TRENCH DEPTH, MAXIMUM	94 IN	2.39 M
TRENCH WIDTH	6-24 IN	152-610 MM
TRANSPORT LENGTH	126 IN	3.2 M
ATTACHMENT WEIGHT, WITHOUT BOOM AND CHAIN	2350 LB	1066 KG

### SPECIFIC FOR RT115 QUAD

ANGLE OF DEPARTURE	24.7°	
TRENCH DEPTH, MAXIMUM	90 IN	2.29 M
TRENCH WIDTH, MAXIMUM	24 IN	610 MM
TRANSPORT LENGTH	134.5 IN	3.42 M
ATTACHMENT WEIGHT, WITHOUT BOOM AND CHAIN	2350 LB	1066 KG



THE CHARLES MACHINE WORKS, INC. DITCH WITCH WORLDWIDE HEADQUARTERS PERRY, OK 73077-0066 U.S.A.

TOLL FREE 800 654 6481 PHONE 580 336 4402 FAX 580 336 3458 INTERNATIONAL FAX 580 572 3561

FOR INFORMATION ABOUT EASY FINANCING WITH A DITCH WITCH PLATINUM PLUS ACCOUNT

AND TO FIND THE DEALER NEAREST YOU, VISIT [DITCHWITCH.COM](http://DITCHWITCH.COM).

GROUNDBREAKING™ EQUIPMENT FROM THE COMPANY THAT LAUNCHED THE INDUSTRY

COMPACT UTILITY | TRENCHERS | HDD | ELECTRONICS



Know what's below.  
Call before you dig.

CERTIFIED QUALITY  
MANAGEMENT SYSTEM  
ISO 9001:2000

LFCMWC225101-0810-1