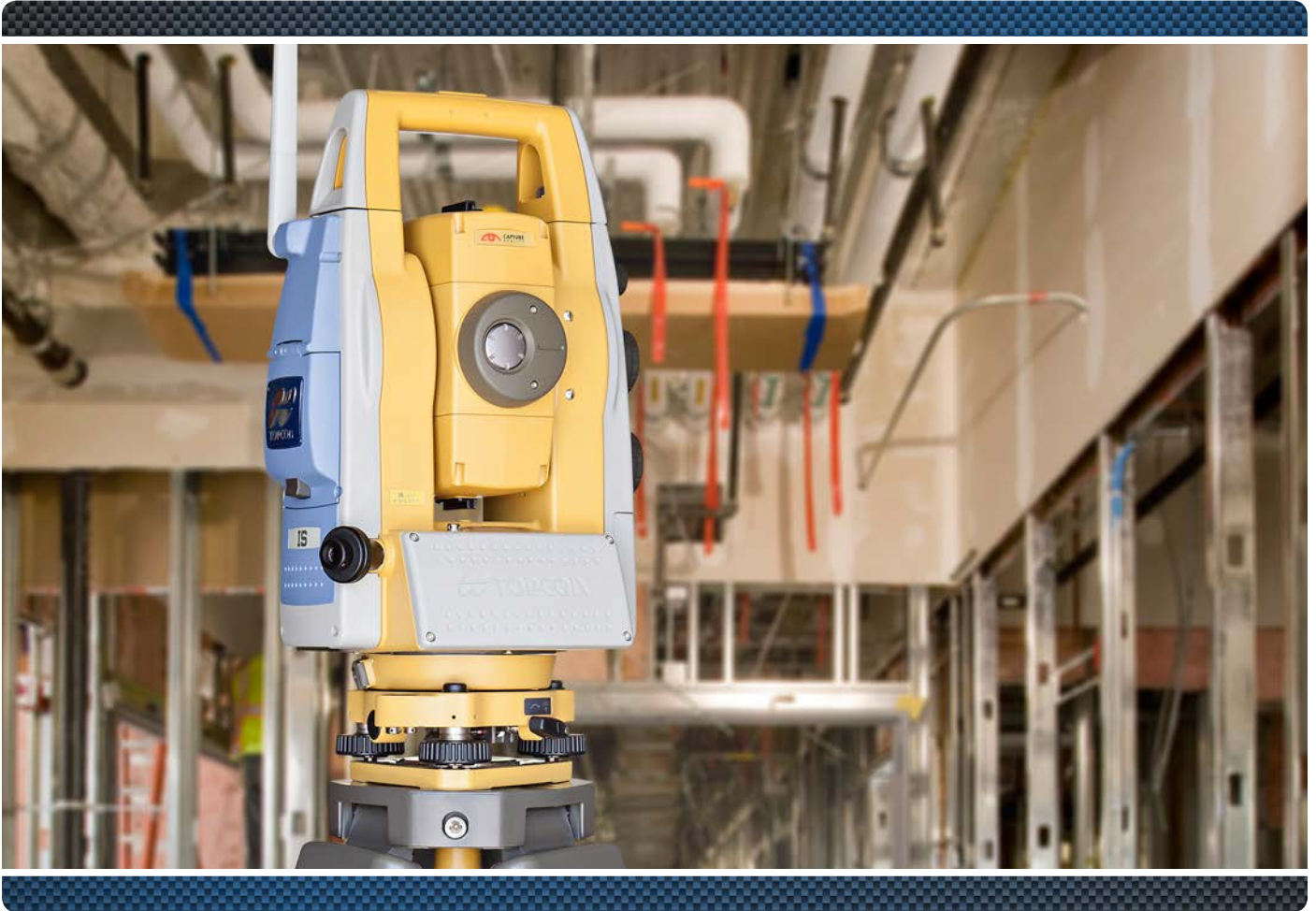


Imaging Layout Station



- Dual Cameras with Optical Zoom
- Live Video and Photo Record
- Robotic One-man Layout
- Remote Image Aiming
- Building Measurement

IS-310 Imaging Layout Station

Imaging technology and efficient software workflows for BIM and construction layout.

The IS-310 is an advanced imaging and measurement system that increases productivity levels for building layout and as-built phases of a project. The Topcon commitment to automating data workflows and increasing your productivity can be seen in this measurement system. By combining advanced hardware technology with efficient software workflows, the IS-310 system is another example of how Topcon finds a better way of getting your work done.

The IS-310 is one element of the complete imaging layout system. The built-in cameras provide a simplified workflow in the field to remotely aim the device and measure to objects that are seen on a live video display of a field controller, or field tablet. This shortcuts the conventional measurement process that typically required a person to stand behind and look through the lens of the instrument. Now the IS-310 can be mounted on a building column above obstructions and be able to sight down to the ground, the walls, or the ceiling. The IS-310 has a strong robotic tracking function that can track a prism throughout the job site, and a laser pointer that assists in pointing out the desired layout point or as-built measurement point.

Whether you are laying out new HVAC and piping systems, inspecting the quality of a recent installation or as-building existing conditions, the IS-310 imaging layout system is the perfect solution for you.

Connected to the Office

Stay connected with the office to ensure design information is accurate and up to date. When the IS-310 is paired with MAGNET® Field software, the controller is connected through the MAGNET Enterprise cloud exchange. Any updates or changes to the design can be shared instantly, and as the office design staff can see immediate results of the field measurements, and exchange files and review field progress in realtime.



Photo Record

- Wide view camera
- Through the lens camera
- Saved with point data
- Document quality control



One-man Layout

- Prism auto-tracking
- Laser pointer
- Floor, ceiling and wall layout



Remote Image Aiming

- Dual camera images
- Auto and manual focus
- Easy to see
- Large screen viewing
- Optical zoom

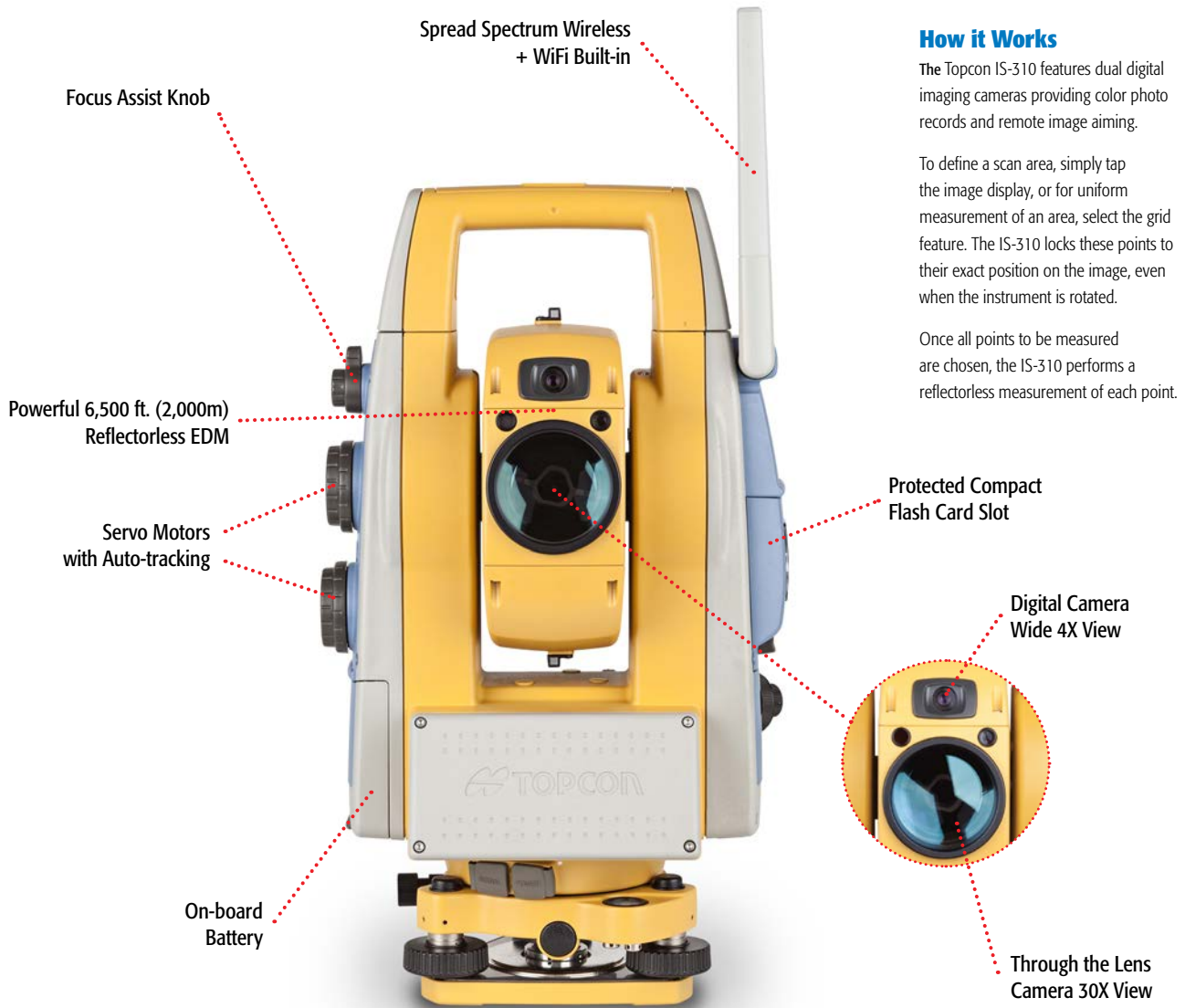


Building Measurement

- Interior construction
- Reconstruction
- Renovation
- MEP layout



PRIMARY FEATURES



How it Works

The Topcon IS-310 features dual digital imaging cameras providing color photo records and remote image aiming.

To define a scan area, simply tap the image display, or for uniform measurement of an area, select the grid feature. The IS-310 locks these points to their exact position on the image, even when the instrument is rotated.

Once all points to be measured are chosen, the IS-310 performs a reflectorless measurement of each point.

Live Video

The IS-310 control interface is done through a live video feed seen on the your PC. No need to stand behind the instrument and continuously look through a small lens. See the live video delivered via WLAN to a computer.



KIT COMPONENTS

IS-310 Package Contents

- IS-310 Instrument
- Batteries and Charger
- USB Data Cables
- Manuals
- Tribrach
- Carry Case



SPECIFICATIONS

Angle Measurement

Method	Absolute Reading
Minimum Reading	1"/5" (0.1/0.5mgon)
Accuracy	1", 3", 5" (0.3mgon)
Tilt Correction	Dual Axis
Compensating Range	±6 ft. (1.8m)

Distance Measurement

Prism Mode	
1 prism	9,840 ft. (3,000m)
3 prism	13,120 ft. (4,000m)
9 prism	16,400 ft. (5,000m)
Accuracy (Fine)	±(2mm+2ppmxD) m.s.e.
Non-Prism Mode	4.9 ft. - 820 ft. (1.5m - 250m)
NP Accuracy (Fine)	±(3mm) m.s.e.
Non-Prism Long Mode	16.4 ft. - 6,500 ft. (5m - 2,000m)
NP Long Mode Accuracy	±(10mm+10ppmxD) m.s.e.

Imaging

Cameras (2)	1.3mp
Image speed	1 - 10fps
Scanning	Max 20 pts/sec

For more specification information:
topconpositioning.com/is-310

Topcon TotalCare

This online resource comes with real live people ready to help. Get expert training from Topcon University's large collection of online materials, and expert help directly from Topcon Technical Support.

Access software and firmware updates, current publications, and guidance from the experts at Topcon all right from your computer or mobile device.

Please visit the TotalCare website to learn more.
topcontotalcare.com



7400 National Drive • Livermore • CA 94550
 (925) 245-8300

Specifications subject to change without notice. ©2014 Topcon Corporation
 All rights reserved. P/N: 7010-2146 Rev. A TF 6/14

The *Bluetooth*® word mark and logos are registered trademarks owned by Bluetooth SIG, Inc. and any use of such marks by Topcon is under license. Other trademarks and trade names are those of their respective owners.

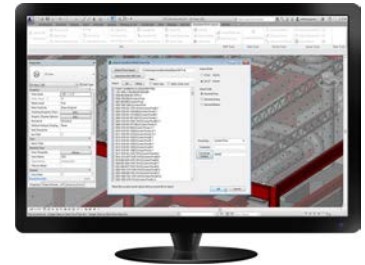
SOFTWARE

MAGNET® Enterprise and Field Layout

Connect the field to the office for efficient exchange and real-time updates.

Autodesk® Point Layout

Autodesk's Point Layout® software has powerful tools to reduce complicated BIM objects into simple point layout information. Use Point Layout to take BIM information from Revit®, AutoCAD® and Navisworks® into the field for layout or as-built points from the field into BIM.



MAGNET® Enterprise

MAGNET Enterprise is a web browser-based environment that simplifies managing field and office data in the cloud. Track assets and communicate with everyone involved on your projects. Login from any browser for live updates. Save time and collaborate.



MAGNET® Field Layout

MAGNET Field Layout is a customized version of MAGNET Field that increases building layout productivity. With in-the-field plans and dimensional entry, you can go from paper plan to building layout faster than ever.



Your local Authorized Topcon dealer is: