

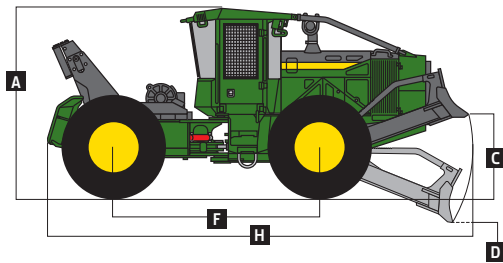
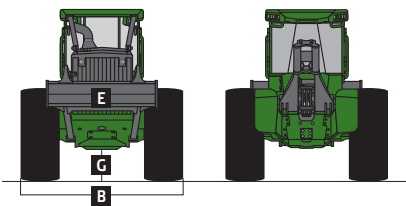
640L / 648L / 748L

Engine	640L / 648L		748L	
Manufacturer / Model	John Deere PowerTech™ PSS 6.8L	John Deere PowerTech™ 6.8L	John Deere PowerTech PSS 6.8L	John Deere PowerTech 6.8L
Off-Road Emission Standards	EPA Final Tier 4 / EU Stage IV	EPA Tier 2 / EU Stage II	EPA Final Tier 4 / EU Stage IV	EPA Tier 2 / EU Stage II
Gross Power	163 kW (218 hp)	157 kW (210 hp)	181 kW (243 hp)	172 kW (231 hp)
Gross Torque	979 Nm (722 ft.-lb.)	943 Nm (695 ft.-lb.)	1093 Nm (806 ft.-lb.)	1020 Nm (752 ft.-lb.)
Number of Cylinders	6			
Valves per Cylinder	4			
Engine Displacement	6.8 L (414 cu. in.)			
Engine Bore and Stroke	106 x 127 mm (4.19 X 5.00 in.)			
Fuel System	High-pressure common rail			
Aspiration	Turbocharged and charge-air cooled			
Air Cleaner	Dual stage with safety element and dust unloader valve			
Engine Cold-Start System	Glow plugs			
Cooling	640L / 648L / 748L			
Cooling System	Heavy-duty radiator with continuous deaeration tank and recovery reservoir			
Fan Drive	Hydraulic, variable speed, reversing			
Powertrain	640L / 648L		748L	
Transmission	Continuous Variable Transmission (CVT)		Continuous Variable Transmission (CVT)	
Speed Ranges, Forward and Reverse	6		6	
Maximum Travel Speed with 30.5-32 Tires	0–24.74 km/h (0–15.37 mph) — 6 speed-range configurations available			
Axles				
Front Axle Oscillation, Stop to Stop	30 deg.		30 deg.	
Options	1400 Extreme Duty and SWEDA™		1425 SWEDA and 1700 Outboard-Extreme™	
Differential (front and rear)	Hydraulic-locking, operated-on-the-go, closed-center differential lock			
Steering	Fully hydraulic, joystick or wheel		Fully hydraulic, joystick or wheel	
Articulation Angle	45 deg. each direction		45 deg. each direction	
Service Brakes	Inboard-mounted, wet-disc, oil-cooled, self-adjusting and self-equalizing front and rear axles			
Parking Brake	Automatically spring-applied, hydraulically released, sealed and lubricated, wet multi-disc			
Hydraulics	640L / 648L / 748L			
Main Pump	Open circuit, axial piston, variable displacement			
Maximum Displacement	60 cc/rev (3.66 ci/rev)			
Electrical System				
Voltage	24 volt			
Number of Batteries (12 volt)	2			
Battery Capacity (each)	950 CCA			
Alternator Rating	150 amp			
Lights (optional)	11			
Grapples	640L	648L	748L	
		<i>Single Function</i>	<i>Dual Function</i>	<i>Dual Function</i>
Standard Capacity				
Opening	N/A	3015 mm (118.7 in.)	3218 mm (126.7 in.)	3267 mm (128.6 in.)
Area	N/A	1.00 m ² (10.8 sq. ft.)	1.24 m ² (13.3 sq. ft.)	1.48 m ² (15.9 sq. ft.)
High Capacity				
Opening	N/A	N/A	3267 mm (128.6 in.)	3737 mm (147.1 in.)
Area	N/A	N/A	1.48 m ² (15.9 sq. ft.)	1.77 m ² (19.1 sq. ft.)
Control	N/A	Joystick	Joystick	Joystick
Refill Capacities				
Fuel Tank				
Standard	342.2 L (90.4 gal.)	342.2 L (90.4 gal.)	391.8 L (103.5 gal.)	391.8 L (103.5 gal.)
Optional	N/A	406.9 L (107.5 gal.)	457.7 L (120.9 gal.)	457.7 L (120.9 gal.)
Hydraulic Reservoir	123.6 L (32.6 gal.)	123.6 L (32.6 gal.)	123.6 L (32.6 gal.)	123.6 L (32.6 gal.)
Diesel Exhaust Fluid (DEF) Tank	20.9 L (5.5 gal.)	20.9 L (5.5 gal.)	20.9 L (5.5 gal.)	20.9 L (5.5 gal.)
Operating Weights				
Machine Weight	16 061 kg (35,410 lb.)	17 844 kg (39,340 lb.)	19 054 kg (42,009 lb.)	19 713 kg (43,460 lb.)
Dozer Blade				
		<i>Single Function</i>	<i>Dual Function</i>	<i>Dual Function</i>
Width	2192 mm (86.3 in.) or 2962.4 mm (116.6 in.)	2192 mm (86.3 in.) or 2962.4 mm (116.6 in.)	2192 mm (86.3 in.) or 2962.4 mm (116.6 in.)	2962.4 mm (116.6 in.)
Height	687.6 mm (27.1 in.)	687.6 mm (27.1 in.)	687.6 mm (27.1 in.)	687.6 mm (27.1 in.)

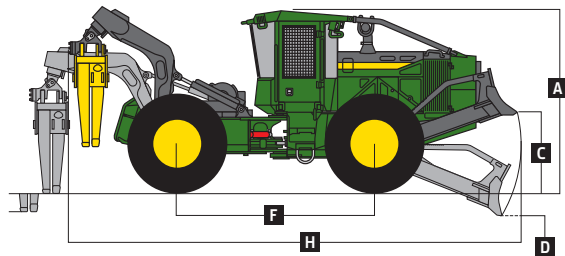
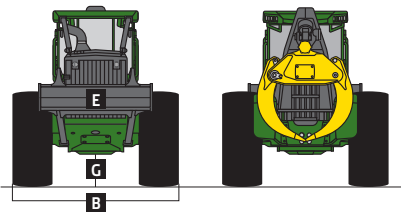


Winch		640L / 648L / 748L		
Winch Control	Joystick control, hydraulically driven			
Cable Capacity	4000 with 204-mm (8 in.) Drum		6000 with 279.5-mm (11 in.) Drum – 2 Speed	
15.8 mm (5/8 in.)	77.4 m (252 ft.)		119.0 m (390 ft.)	
19.1 mm (3/4 in.)	54.6 m (177 ft.)		81.4 m (267 ft.)	
22.2 mm (7/8 in.)	39.3 m (128 ft.)		60.3 m (197 ft.)	
25.4 mm (1 in.)	30.7 m (100 ft.)		46.0 m (150 ft.)	
Line Pull at Stall – 15.8-mm (5/8 in.) Cable	<i>Bare Drum</i>		<i>Bare Drum</i>	
Standard Speed	182.3 kN (41,000 lb.)		N/A	
Low Speed	N/A		221.0 kN (49,696 lb.)	
High Speed	N/A		147.3 kN (33,131 lb.)	
Winch		640L		
Line Speed – 15.8-mm (5/8 in.) Cable	4000 with 204-mm (8 in.) Drum		6000 with 279.5-mm (11 in.) Drum – 2 Speed	
Standard Speed	19.2 m/min. (63 fpm)		N/A	
Low Speed	N/A		18.2 m/min. (60 fpm)	
High Speed	N/A		27.4 m/min. (90 fpm)	
Machine Dimensions		648L / 748L		
Line Speed – 15.8-mm (5/8 in.) Cable	4000 with 204-mm (8 in.) Drum		6000 with 279.5-mm (11 in.) Drum – 2 Speed	
Standard Speed	19.2 m/min. (63 fpm)		N/A	
Low Speed	N/A		14.0 m/min. (46 fpm)	
High Speed	N/A		13.4 m/min. (44 fpm)	
High Speed	N/A		20.1 m/min. (66 fpm)	
Machine Dimensions		748L		
Tire Size	30.5-32		30.5-32	
A Overall Height	3318 mm (130.6 in.)		3318 mm (130.6 in.)	
B Overall Width	3233 mm (127.3 in.)		3233 mm (127.3 in.)	
C Maximum Blade Lift Above Ground	1517 mm (59.7 in.)		1517 mm (59.7 in.)	
D Maximum Blade Dig Below Ground	359 mm (14.1 in.)		359 mm (14.1 in.)	
E Dozer Blade Width	2192 mm (86.3 in.)		2192 mm (86.3 in.)	
Optional Dozer Blade Width	2962.4 mm (116.6 in.)		2962.4 mm (116.6 in.)	
F Wheelbase	3680 mm (144.8 in.)		3680 mm (144.8 in.)	
G Ground Clearance	555 mm (21.8 in.)		557 mm (21.9 in.)	
H Overall Length	7591 mm (298.9 in.)		7685 mm (302.5 in.)	

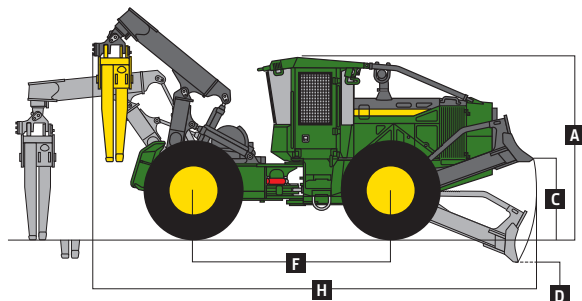
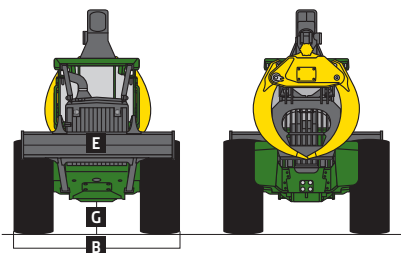
640L Skidder



648L Single-Function Grapple



648L / 748L Dual-Function Grapple



Machine not exactly as shown. Illustrations for dimensioning purposes only. Specifications are subject to change without notice.

848L / 948L

Engine	848L	948L
Manufacturer / Model	John Deere PowerTech™ PSS 9.0L	John Deere PowerTech™ 9.0L
Off-Road Emission Standards	EPA Final Tier 4 / EU Stage IV	EPA Tier 2 / EU Stage II
Gross Power	198 kW (265 hp)	210 kW (281 hp)
Gross Torque	1191 Nm (878 ft.-lb.)	1276 Nm (941 ft.-lb.)
Number of Cylinders	6	
Valves per Cylinder	4	
Engine Displacement	9.0 L (548 cu. in.)	
Engine Bore and Stroke	118 x 136 mm (4.66 X 5.35 in.)	
Fuel System	High-pressure common rail	
Aspiration	Turbocharged and charge-air cooled	
Air Cleaner	Dual stage with safety element and dust unloader valve	
Engine Cold-Start System	Auto ether	
Cooling	848L / 948L	
Cooling System	Heavy-duty radiator with continuous deaeration tank and recovery reservoir	
Fan Drive	Hydraulic, variable speed, reversing	
Powertrain		
Transmission	Continuous Variable Transmission (CVT)	
Speed Ranges, Forward and Reverse	6	
Maximum Travel Speed with 35.5-32 Tires	0–25.0 km/h (0–15.53 mph) — 6 speed-range configurations available	
Axles	1700 Outboard-Extreme™	
Front Axle Oscillation, Stop to Stop	30 deg.	
Differential (front and rear)	Hydraulic-locking, operated-on-the-go, closed-center differential lock	
Steering	Fully hydraulic, joystick or wheel	
Articulation Angle	45 deg. each direction	
Service Brakes	Inboard-mounted, wet-disc, oil-cooled, self-adjusting and self-equalizing front and rear axles	
Parking Brake	Automatically spring-applied, hydraulically released, sealed and lubricated, wet multi-disc	
Hydraulics		
Main Pump	Open circuit, axial piston, variable displacement	
Maximum Displacement	60 cc/rev (3.66 ci/rev)	
Electrical System		
Voltage	24 volt	
Number of Batteries (12 volt)	2	
Battery Capacity (each)	950 CCA	
Alternator Rating	150 amp	
Lights (optional)	11	
Grapples	848L	948L
	<i>Dual Function</i>	<i>Dual Function</i>
Capacity		
Opening	3737 mm (147.1 in.)	3851 mm (151.6 in.)
Area	1.77 m² (19.1 sq. ft.)	2.07 m² (22.3 sq. ft.)
Control	Joystick	Joystick
Refill Capacities	848L / 948L	
Fuel Tank		
Standard	391.8 L (103.5 gal.)	
Optional	457.7 L (120.9 gal.)	
Hydraulic Reservoir	123.6 L (32.6 gal.)	
Diesel Exhaust Fluid (DEF) Tank	20.9 L (5.5 gal.)	
Operating Weights	848L	948L
Machine Weight	22 384 kg (49,349 lb.)	22 416 kg (49,420 lb.)
Dozer Blade	848L / 948L	
Width	2962.4 mm (116.6 in.)	
Height	691.0 mm (27.2 in.)	

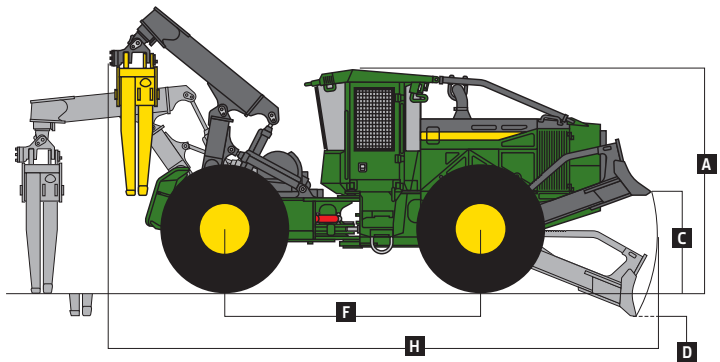
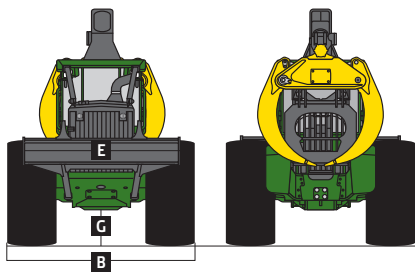
Specifications are subject to change without notice.




Winch		848L / 948L	
Winch Control	Joystick control, hydraulically driven		
Cable Capacity	4000 with 204-mm (8 in.) Drum	6000 with 279.5 mm (11 in.) Drum – 2 Speed	
15.8 mm (5/8 in.)	77.4 m (252 ft.)	119.0 m (390 ft.)	
19.1 mm (3/4 in.)	54.6 m (177 ft.)	81.4 m (267 ft.)	
22.2 mm (7/8 in.)	39.3 m (128 ft.)	60.3 m (197 ft.)	
25.4 mm (1 in.)	30.7 m (100 ft.)	46.0 m (150 ft.)	
Line Pull at Stall – 15.8-mm (5/8 in.) Cable	<i>Bare Drum</i>	<i>Bare Drum</i>	
Standard Speed	182.3 kN (41,000 lb.)	N/A	
Low Speed	N/A	221.0 kN (49,696 lb.)	
High Speed	N/A	147.3 kN (33,131 lb.)	
Line Speed – 15.8-mm (5/8 in.) Cable			
Standard Speed	14.0 m/min. (46 fpm)	N/A	
Low Speed	N/A	13.4 m/min. (44 fpm)	
High Speed	N/A	20.1 m/min. (66 fpm)	

Machine Dimensions		Dual Function	
Tire Size	35.5-32		
A Overall Height	3379 mm (133.0 in.)		
B Overall Width	3485 mm (137.2 in.)		
C Maximum Blade Lift Above Ground	1578 mm (62.1 in.)		
D Maximum Blade Dig Below Ground	298 mm (11.7 in.)		
E Dozer Blade Width	2962.4 mm (116.6 in.)		
F Wheelbase	3975 mm (156.5 in.)		
G Ground Clearance	542 mm (21.3 in.)		
H Overall Length	8469 mm (333.4 in.)		

848L / 948L Dual-Function Grapple



Machine not exactly as shown. Illustrations for dimensioning purposes only.



What you provide keeps the rest of the world working. And your passion for the woods keeps you working long after most people have called it a day. Since 1965 when we introduced our 440 Skidder, we've continued to change the game for loggers with safer and more comfortable machines. To make your tough job just a little bit easier. Today that same customer-inspired commitment to quality lives on in the L-Series Skidders. **Because when you talk, we listen.**

We're for Loggers



JOHN DEERE