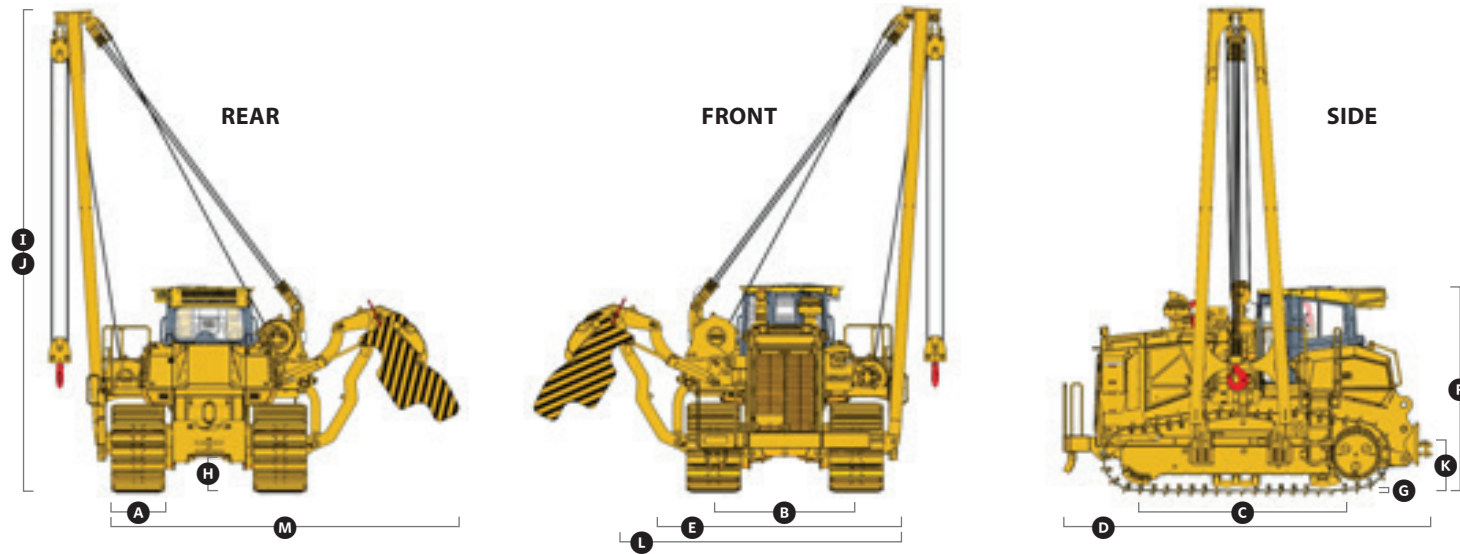




SPECIFICATIONS

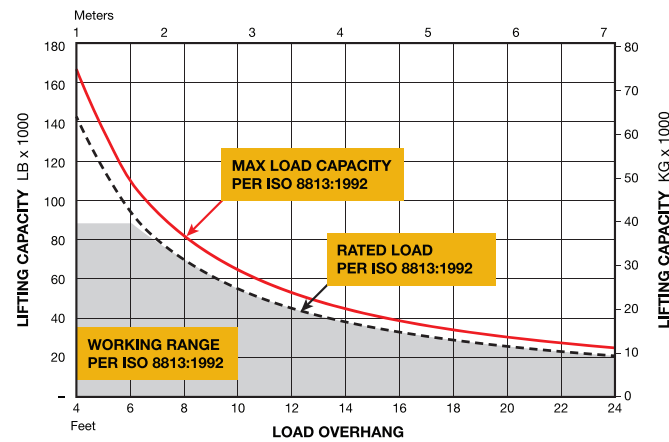
PERFORMANCE & CAPACITIES



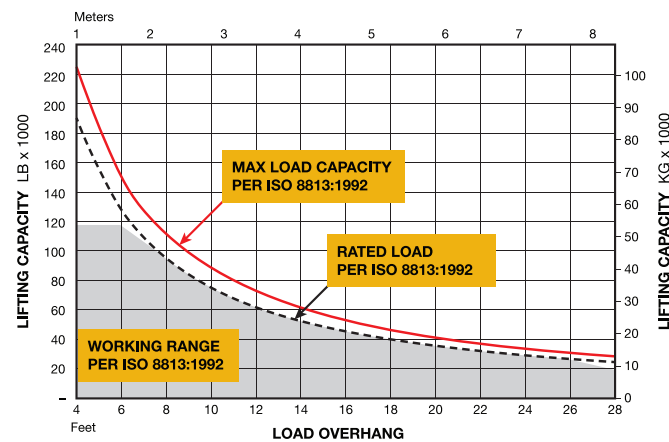
Machine Dimensions

SPECIFICATION	BPL170K	BPL220K
A Track-shoe width	30" (36" optional)	36"
B Track gauge	96"	104"
C Length of track on ground	147"	147"
D Operating length	20'6"	20'6"
E Width w/o boom & CWT	12'8" (13'3")	13'10"
F Machine height (top of cab/ROPS)	11'6"	11'6"
G Grouser height	2.8"	2.8"
H Ground clearance (in dirt)	20.6"	20.6"
I Boom height (at SAE 4ft overhang) - 24ft boom	324"	324"
J Boom height (at SAE 4ft overhang) - 28ft boom	372"	372"
K Drawbar height	23"	23"
L Width of tractor (counterweight retracted)	167"	177"
M Width of tractor (counterweight extended)	250"	264"

BPL170K Load Chart w/24' Boom



BPL220K Load Chart w/28' Boom



SYSTEM	SPECIFICATION	BPL170K	BPL220K	
Engine	Manufacturer/model	John Deere PowerTech™ OSS 6135	John Deere PowerTech™ OSS 6135	
	Max power @ rated rpm kW (hp)	261 (350) @ 1800	261 (350) @ 1800	
	Net peak torque @ rated rpm NM (lb-ft)	1576 (1162) @ 1300	1576 (1162) @ 1300	
	Number of cylinders – Displacement L (cu in)	6 – 13.5 (824)	6 – 13.5 (824)	
Transmission	Type	Hydrostatic w/ direct drive	Hydrostatic w/ direct drive	
	Speed ranges	Infinite	Infinite	
	Maximum speed forward km/hr (mph)	11.0 (6.8)	11.0 (6.8)	
	Maximum speed reverse km/h (mph)	11.0 (6.8)	11.0 (6.8)	
Steering	Type	Dual-path hydrostatic with counter-rotation	Dual-path hydrostatic with counter-rotation	
Load Rating	Max lift @ 4-foot overhang	177,000 lb	220,000 lb	
	Rated load @ 4-foot overhang	150,000 lb	187,000 lb	
Counterweight	Total removable weight	17,068 lb	27,500 lb	
Hook Winch	Drum diameter	10"	10"	
	Flange diameter	23"	23"	
	Drum length	13"	13"	
	Wire rope diameter	0.75"	0.75"	
	24-foot boom cable Length (nominal capacity)	243 ft	375 ft	
	Max cable capacity	510 ft	510 ft	
	Load block line parts	6	8	
	Hook speed (top layer)	46 ft/min	34 ft/min	
Boom	Boom length (options: 24', 28', 32', 36')	24'	28'	
	Boom Winch	Drum diameter	10"	10"
		Flange diameter	20"	20"
		Drum length	13"	13"
		Wire rope diameter	0.75"	0.75"
24-foot boom cable length (nominal capacity)		243'	243'	
28-foot boom cable length (nominal capacity)	283'	283'		
Hydraulics	Type	Pressure compensating, load sense, electrical over hydraulic	Pressure compensating, load sense, electrical over hydraulic	
	Aux pump pressure	4500 psi	4500 psi	
	Aux pump output	100 gpm	100 gpm	
	Pump displacement	190 cc	190 cc	
Undercarriage	Number of shoes	49 per side	49 per side	
	Contact area	10,584 sq/in	10,584 sq/in	
	Number of rollers	9	9	
	Ground Pressure	11.4 psi (w/ 36" grousers)	12.7 psi	
Weight	Operating weight (includes rear hitch)	120,221 lb	134,217 lb	
	Base machine weight	77,724 lb (35,255 kg)	78,656 lb (35,678 kg)	
	Base weight with no Boom/counterweight	103,025 lb (46,731 kg)	105,250 lb (47,741 kg)	