

G/GP-SERIES GRADERS

145–211 kW (195–283 hp)



JOHN DEERE





So many options, one obvious choice.

Offering one-of-a-kind advantages and unequalled options, our G-Series Graders let you decide how the work gets done. Choose from full-featured Grade Pro (GP) models with state-of-the-art fingertip armrest controls. Or opt for conventional lever-operated machines. In tandem- or six-wheel-drive configurations. Loaded for bear, or barely loaded, each of these brawny blades comes standard equipped with the same heavy-duty durability and uptime-boosting features including a fuel-efficient nine-liter PowerTech™ diesel. Easy-access filter bank. And simple-to-clean coolers. That's only the beginning. To learn about the value-added advantages that separate the G-Series from the rest of the pack, read on. Then contact your John Deere dealer for a demo.



Choose the operating system that works for you — fingertip armrest or low-effort mechanical controls. Either way, levers are arranged in the familiar industry-standard pattern, and deliver smooth, predictable response.

Your choice of EPA Tier 2, 3, or Interim Tier 4 (EU Stage II, IIIA, and IIIB) fuel-efficient John Deere diesels deliver generous displacement, power, and lugging ability. (Tier 2 not available in the U.S.A. and Canada.)

Grade Pro models arrive Integrated Grade Control (IGC) ready, simplifying the addition of the grade-control system of your choice.

Production-boosting GP features such as automated cross-slope control and pushbutton-activated return-to-straight make the most of a seasoned operator's skills. And help improve an inexperienced operator's game.

Long-term durability is bolstered by larger-than-usual articulation joint roller bearings, big-displacement wet-sleeve diesel engines, and heavy-duty transmissions, to list just a few.

Standard equipped with JDLink Ultimate™, you have 24/7 anywhere computer access to your grader's location, utilization, dashboard alerts, fuel consumption, diagnostic codes, and hours. Plus geofencing, curfew, and numerous other capabilities.

670G/GP

Net power (IT4/Stage IIIB)	145 kW (195 hp)
Net peak torque	1098 Nm (810 lb.-ft.)
Torque rise	68%
Typically equipped weight	19 205 kg (42,340 lb.)
Blade pull	12 800 kg (28,220 lb.)

770G/GP

Net power (IT4/Stage IIIB)	183 kW (245 hp)
Net peak torque	1235 Nm (911 lb.-ft.)
Torque rise	57%
Typically equipped weight	19 396 kg (42,760 lb.)
Blade pull	13 150 kg (28,990 lb.)

870G/GP

Net power (IT4/Stage IIIB)	198 kW (265 hp)
Net peak torque	1300 Nm (959 lb.-ft.)
Torque rise	53%
Typically equipped weight	20 303 kg (44,760 lb.)
Blade pull	13 299 kg (29,320 lb.)

672G/GP

Net power (IT4/Stage IIIB)	145 kW (195 hp)
Net peak torque	1098 Nm (810 lb.-ft.)
Torque rise	68%
Typically equipped weight	19 976 kg (44,040 lb.)
Blade pull	19 105 kg (42,120 lb.)

772G/GP

Net power (IT4/Stage IIIB)	198 kW (265 hp)
Net peak torque	1319 Nm (973 lb.-ft.)
Torque rise	50%
Typically equipped weight	20 217 kg (44,570 lb.)
Blade pull	19 595 kg (43,200 lb.)

872G/GP

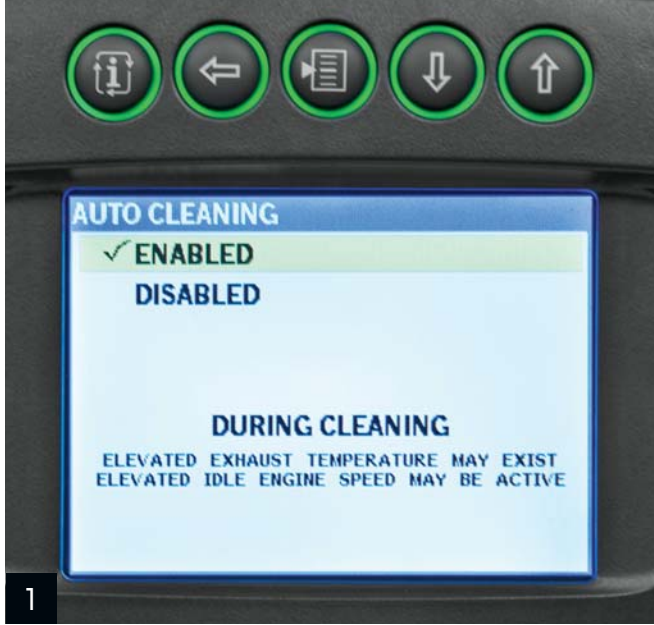
Net power (IT4/Stage IIIB)	211 kW (283 hp)
Net peak torque	1375 Nm (1,014 lb.-ft.)
Torque rise	51%
Typically equipped weight	21 187 kg (46,710 lb.)
Blade pull	19 849 kg (43,760 lb.)

Seeing is believing.

It's easy to see why these graders are destined to become industry favorites. Visibility is clearly unsurpassed, with a large expanse of floor-to-ceiling tinted glass, narrow front console, and streamlined saddle arms giving way to a commanding view of the work at hand. What's more, the spacious walk-through cab's many amenities provide all of the fatigue-beating comfort and quiet an operator could ever want. So you can count on the kind of productivity you need.



1. Multi-language LCD monitor gives pushbutton access to a wealth of machine info including vital and general operating conditions, diagnostic codes, and even the activity behind you (when equipped with camera). On IT4/EU Stage IIIB-equipped graders, exhaust filter operation and maintenance status are indicated with on-screen displays.
2. Sealed-switch module provides pushbutton control of 25 machine functions including keyless start. When enabled, keyless start requires a numeric pass code that helps prevent unauthorized machine operation.
3. Yet another example of doing things your way — an alternate mounting position on the right-side ROPS post makes it easy to relocate the monitor, giving way to a grade-control panel.



1



Which grader's visibility is truly best-in-class? Depends on where you're looking. On ours, you have an unobstructed view of the things you need to see. Like the heel and toe, and back side of the blade. Even the area beneath the front axle is clearly visible, so you can see oncoming obstacles.

Narrow center console and streamlined saddle bring the blade and front tires within focus. On GP models (shown), control linkages have been eliminated and front windows lowered 114 mm (4½ in.) to further enhance blade visibility.

We've got your back with large adjustable mirrors that give a clear view of the tandems and ripper. If you need to see more, an optional camera displays the action behind you on the color LCD monitor in front of you.

Highly efficient HVAC system employs 13 directional vents for superior all-season comfort. Sliding side glass and available swing-out lower front windows add ventilation.

Standard 15-amp converter (30-amp available) and two 12-volt outlets provide convenient power for cell phones and other electronic devices.

Storage is generous with numerous overhead compartments, plus a place for a beverage, cooler, cell phone, and other carry-ons.

Tinted glass, adjustable front and rear shades, and extended roofline help reduce glare. Standard front and rear intermittent wipers and rear window defogger also help keep the view clear. Heated mirrors are available.

Pushbutton-activated cruise control helps reduce operator fatigue. Simply depress the brake or throttle pedals to return to manual operation.



2



3

The genius behind our grader controls.

Armed with input from the people who run them, we set out to design the ideal operating system for our next-generation graders. You talked, we listened, and that's why we offer a choice.



1. With high/wide-back and heated lower cushion, the GP grader's air-suspension seat provides exceptional daylong comfort.
2. Automated cross-slope simplifies holding a consistent slope by reducing operation to a single lever. An operator simply selects the desired slope and the side of the blade that will be manually controlled. Once set, the system automatically adjusts the opposite blade-lift cylinder to maintain the slope. It's a Grade Pro exclusive that helps veteran operators be their best and inexperienced operators get up-to-speed more quickly.
3. Cross-slope monitor can also be used as a slope meter. Colored bars on the LCD screen indicate the blade position in relation to the desired slope — to help stay on grade.
4. At the touch of a button, return-to-straight automatically straightens an articulated frame. For quicker work cycles.
5. If your work doesn't require an automated grade-control system, choose a G-Series model. Conventional mechanical levers are positioned in the industry-accepted pattern on both sides of the steering wheel and deliver precise, predictable, low-effort control.



For unsurpassed productivity with a grade-control system, opt for a GP model. Eight armrest-mounted fingertip-actuated controls, including steering lever, are arranged in the industry-standard pattern on each side of the steering wheel. Unlike the joysticks used in other graders, your operator won't have to relearn the controls. Or be concerned about unintentionally actuating hydraulic functions when turning, backing up, working on a slope, or V-ditching.

No extra levers required for grade control. Instead, knob-integrated pushbuttons provide convenient, fingertip activation.

Beyond their predictable operator-friendly controls, GP models come equipped with cross-slope, return-to-straight, and IGC ready. These and numerous other value-added advantages quickly pay for themselves in increased productivity.



Best-in-class lever efforts are combined with Pressure-Compensated Load-Sensing (PCLS) hydraulics to ensure consistent, predictable, and precise response.

Automatic differential lock stays engaged when travelling straight, disengages in turns exceeding 10 degrees, and re-engages when returning to straight.

With five true working speeds below 16 km/h (10 mph) and a top speed of 45 km/h (28 mph), it's easy to match ground speed to the work. AutoShift option automatically shifts gears four through eight, for even easier operation.

When engine-stall prevention senses an overload, the system automatically shifts the transmission to neutral and issues a visual alert. This John Deere exclusive helps prolong uptime and engine life.

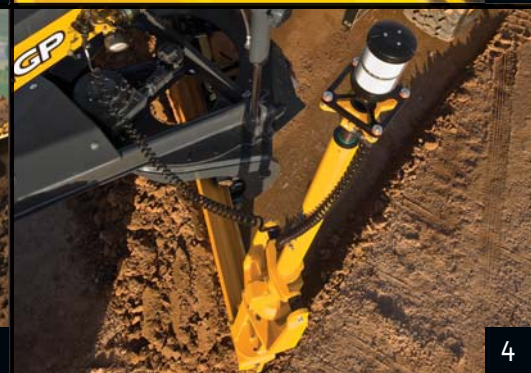
Choose from front scarifier, mid-mount scarifier, or rear scarifier/ripper. There's also a front-lift option that simplifies adding a bulldozer blade or V-plow.

Optimized moldboard curvature and generous circle torque help keep blades heaped and loads rolling.

Levels everything but the playing field.

Sporting a different profile than their popular predecessors, the G-Series' taller mainframe lets these highly productive graders shoulder larger loads and navigate more easily over obstacles. Provides plenty of clearance for a mid-mount scarifier, and simplifies blade setup and operation, too. You won't find easier-running graders, either. Our exclusive Event-Based Shifting (EBS) transmission delivers smooth-as-silk gear and direction changes, for exceptional control and grading precision without extra effort. There's nothing else like them.

1. Throat clearance between the top of the blade and bottom of the circle has increased significantly, for better material flow across the blade. Blade clearance has also increased, making it easier to navigate over obstacles.
2. Jackscrew-adjusted side-shift wear inserts keep the moldboard tight and precise. Takes only minutes to return tolerances to factory spec.
3. Exclusive ball-and-socket draft-frame pivot and seven-position saddle provide best-in-class blade setup and improved ditch cutting, ditch cleaning, and reach outside the tires.
4. GP models come factory equipped with bulkhead connectors, sensor mounts, electrical wiring harnesses, integrated controls, and exclusive universal moldboard mast mounts. So adding Trimble, TOPCON, or other grade-control systems is neat, quick, and noninvasive.



Nothing runs like a Deere, because nothing is built like one.

Downtime is lost time. Which is why we loaded-up these graders with durability-enhancing advantages that promise to deliver years of trouble-free service. Large-displacement heavy-duty wet-sleeve diesel engines. Larger-than-usual axle shafts, differential locks, hydraulic cylinders, and front axles. Biggest-in-class articulation joint roller bearings. And solid-state electronics and sealed-switch modules, to list just a few. When you know how they're built, you'll run a John Deere.

1. Our IT4/EU Stage IIIB technology is simple, fuel efficient, fully integrated, and fully supported. It employs field-proven cooled exhaust gas recirculation (EGR) for reducing NOx, and a diesel particulate filter and diesel oxidation catalyst to reduce particulate matter. Periodic active and passive regeneration automatically cleans the filter without impacting machine productivity.
2. High-strength circle and draft frame withstand high-impact loads. Available blade-impact system further protects structural components from damage caused by run-ins with obstructions.
3. Switch module and electrical center employ circuit-board technology that reduces connections from 25 to 1, and wires from 100 to 4. Solid-state seals and switches keep out moisture and debris, and are proven reliable for more than two million cycles.
4. Front axles are built to last with exclusive heavy-duty tapered roller bearing kingpins. In addition, steel guards and thick rubber coverings protect the hoses on six-wheel-drive models.



1



2



3



Variable-speed hydraulic reversing fan cycles to eject debris from the radiator and cooler cores only as needed, reducing fuel consumption while lowering sound levels and daily operating costs. Or choose your preferred cleaning cycles through the in-cab monitor.

Self-adjusting wet-disc brakes are mounted inboard, where they run cool, clean, and unexposed to corrosive materials.

Purpose-built PowerShift™ transmission employs durable heavy-duty clutches and bearings, for reliable performance, shift after shift.

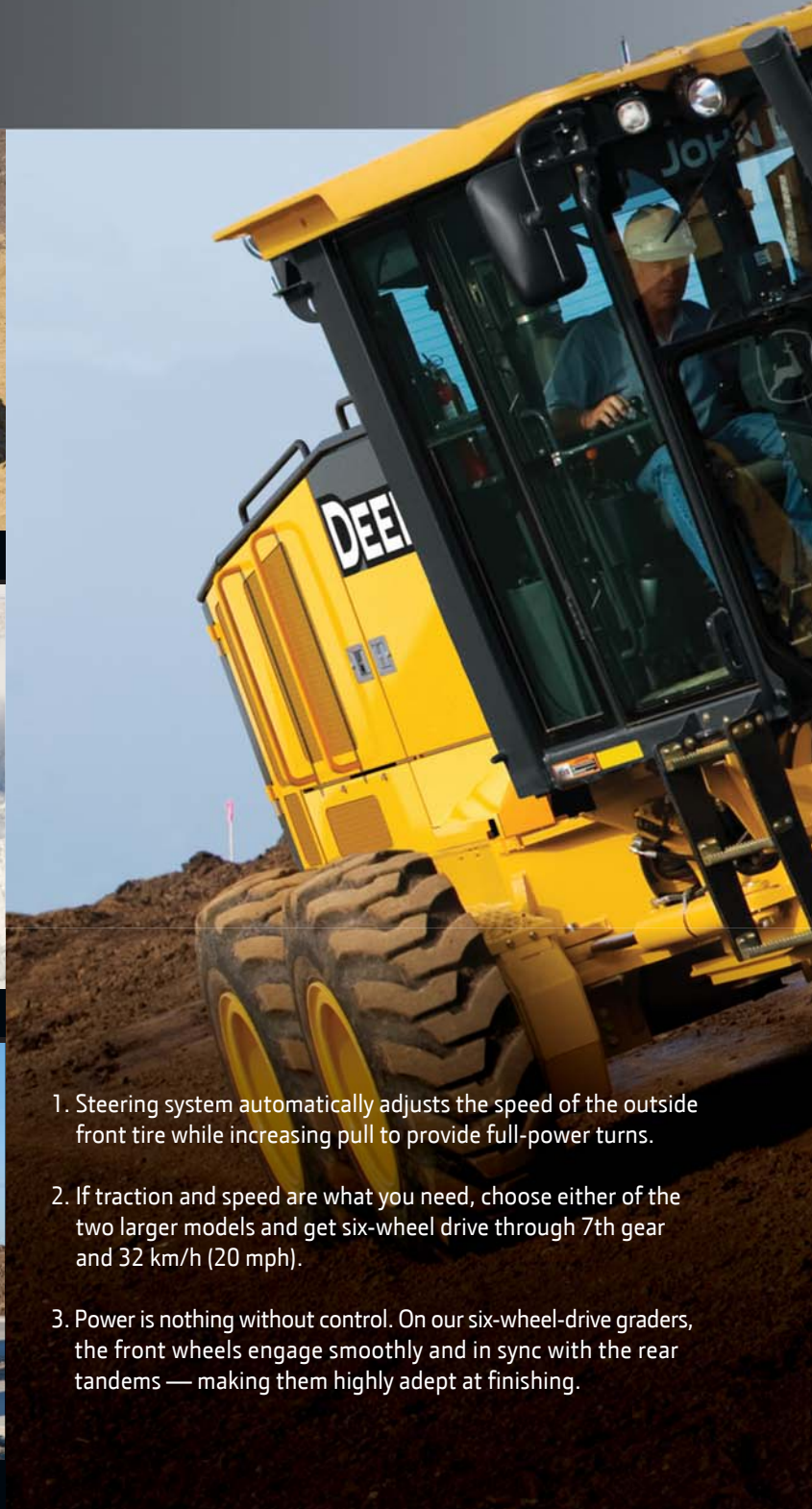
Separate transmission, hydraulic, and axle filtration and cooling systems prevent cross-contamination for longer component life.

Exclusive auto-shutdown applies the brakes and turns off the engine after an operator-determined time of idling. Saves fuel and reduces wear on engine, transmission, and hydraulic components.



Grounds for a John Deere six-wheel-drive grader.

John Deere tandem-drive graders are plenty productive. But if you want to improve your ground game even more, choose a six-wheel-drive configuration. Putting their entire weight and all six tires to work, their job-proven dual-path hydrostatic drive boosts productivity in all kinds of work. And enables them to accomplish almost everything easier and with fewer passes than their conventional counterparts.



1. Steering system automatically adjusts the speed of the outside front tire while increasing pull to provide full-power turns.
2. If traction and speed are what you need, choose either of the two larger models and get six-wheel drive through 7th gear and 32 km/h (20 mph).
3. Power is nothing without control. On our six-wheel-drive graders, the front wheels engage smoothly and in sync with the rear tandems — making them highly adept at finishing.

From blue-topping to heavy dirt work, G-Series six-wheel-drive graders are more productive in all kinds of applications.

Exclusive power-management system balances the demand between the front and rear wheels, delivering smooth six-wheel power.

Six-wheel drive enables these graders to work across steep slopes, carry big loads through corners, and direct the front wheels while ditching without spinning out.



Open wide and be awed.

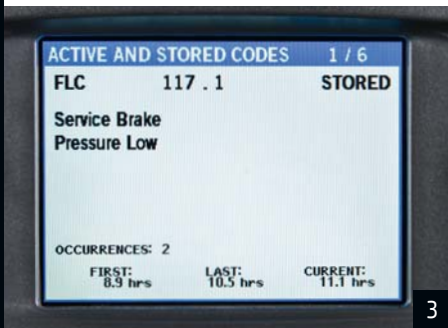
Unlatch the large side panels and you'll discover the many ways these graders minimize maintenance. And help keep daily operating costs low. Our exclusive swing-out coolers and hinged fan provide wide-open access to both sides of the cores for simplified clean-out. Grouped same-side service points make quick work of the daily routine. Easy-to-check sight gauges and fluid reservoirs. Quick-change filters. Convenient fluid-sample ports and advanced self-diagnostics — the G-Series are loaded with time- and money-saving features that help keep maintenance manageable.



1. Maintenance personnel will appreciate the unique easy-access hydraulic, transmission, and differential filter bank.



2. Available quick fluid-service ports help speed servicing to increase uptime. 500-hour engine oil/filter; 2,000-hour transmission, hydraulic, and axle filters; and 4,000-hour transmission, hydraulic, and axle oil-service intervals minimize maintenance.



3. Should a problem arise, easy-to-navigate LCD monitor provides diagnostic info and even offers possible troubleshooting solutions to decrease downtime.

4. Two-hour replaceable super-tough nylon or bronze draft frame and circle wear inserts minimize maintenance labor.

5. Ground-level fueling and a fast-fill option get you back into the rat race more quickly.

6. IT4/EU Stage IIIB diesel particulate filter is easily removed through the top of the engine compartment. Minimum service interval is 5,000 hours, and must be done by a John Deere dealer or other qualified service provider.





Compare the total cost of fluids, filters, parts, and labor for recommended maintenance and you'll discover the John Deere savings is substantial.

Large service doors open wide, and same-side daily checkpoints are conveniently grouped for easy ground-level access. Standard service compartment lights illuminate the way.

NeverGrease™ is the word for significant savings in operating costs. These no-maintenance pin joints eliminate numerous zerks and the attention they demand.

Most zerks are grouped in banks for quick and easy greasing. Conveniently displayed periodic lube and maintenance chart helps ensure that nothing's overlooked.

Exclusive cooling package eliminates stacked coolers. Together with the hinged swing-out fan, access to the cores is quick and cleaning is easy.

Hydraulically driven fan runs only as needed, reducing fuel consumption and wear-causing debris flow through the cores.