



BMH40A Material Handler



Built Right. Here.

The BMH40A from Brandt is designed and manufactured in North America and purpose built for the scrap material handling industry. This world-class heavy lifter delivers unmatched productivity with 24/7/365 support plus easy-to-find components for increased uptime.

① Improved Productivity

With proven Deere components and rapid cycle times, the BMH40A allows you to do more in less time.

- Final Tier 4 PowerTech PVS 6.8L engine delivers net rated power of 223 hp at 1900 rpm.
- Market-leading swing torque and speed maximizes cycle times.
- Electric-over-hydraulic (EH) system provides ideal flow for maximum efficiency and productivity.

② Increased Uptime

Second-to-none service and support paired with easy-to-maintain components means more uptime from your machine.

- Automatic reversing, cool-on-demand fan intervals keep the radiators free of debris.
- Excellent operator access and egress and localized ground access simplify daily maintenance.
- Coast-to-coast dealer network, factory-trained technicians, and 24/7/365 support minimize downtime.

③ Lower Cost of Operation

The energy recovery system and auto-idle/shutdown maximize fuel efficiency. They also contribute to reduced cost of operation and wear of machine components.

- Nitrogen-filled cylinder and reservoir counteracts boom and arm weight to reduce fuel consumption.
- Power modes adjust engine settings, allowing a focus on fuel economy, productivity, or both.
- Auto-idle and auto-shutdown save fuel when the machine is inactive.

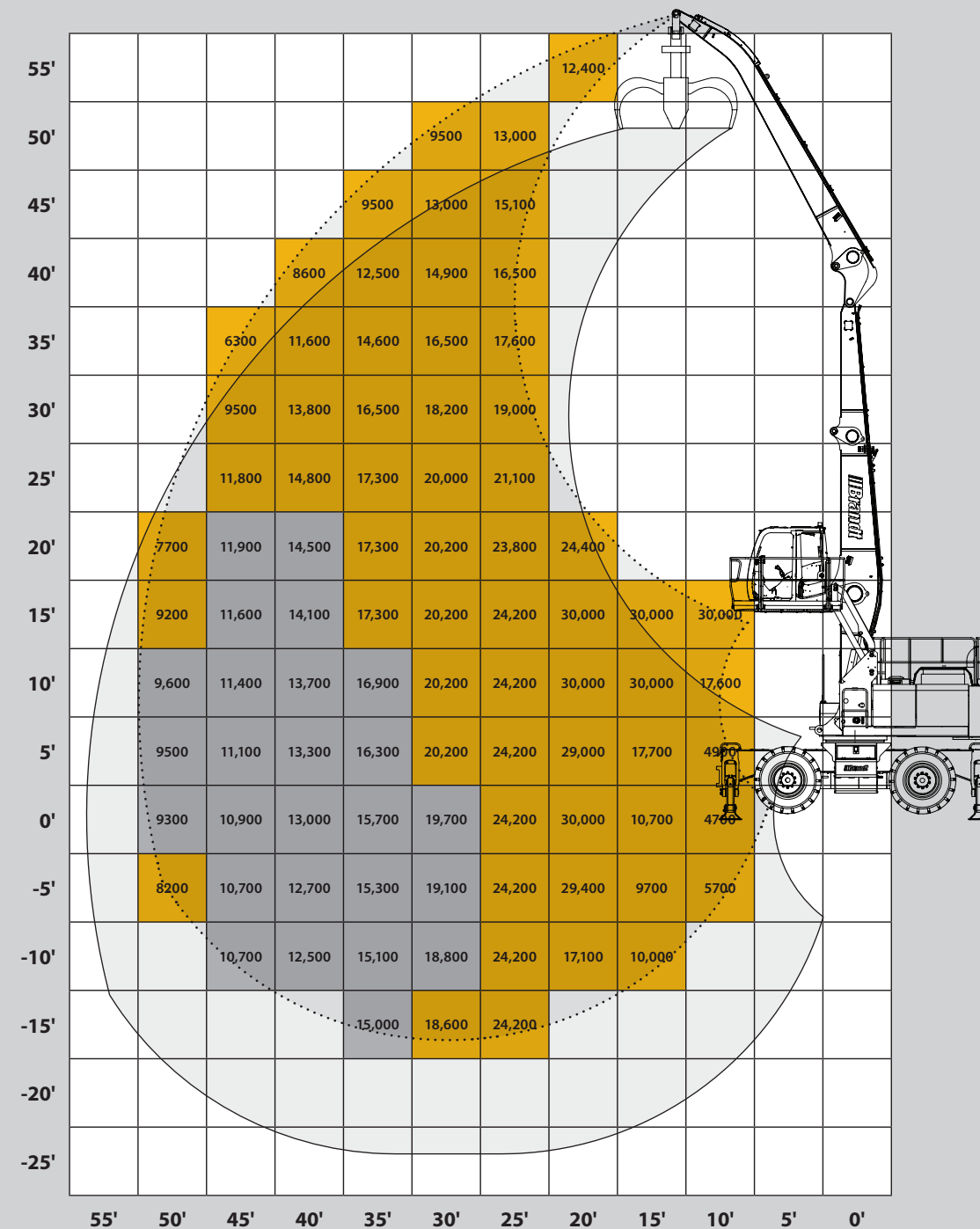
Powerful Value. **Delivered.**

Brandt

BMH40A MATERIAL HANDLER SPECIFICATIONS

ENGINE	
Model	John Deere PowerTech™ PSS 6.8L, 6068HT107
Non-Road Emission Standard	EPA Final Tier 4/EU Stage IV
Net Rated Power (ISO 9249)	166 kW (223 hp) at 1900 rpm
Aspiration	Series turbocharged, air-to-air charge-air cooler
COOLING	
System	Reversing cool-on-demand hydraulic-driven, suction-type fan with remote-mounted drive
HYDRAULIC SYSTEM <i>Closed center, electronic over hydraulic</i>	
Main Pumps	2 variable-displacement pumps
Maximum Rated Flow	236 L/m (62.3 gpm) x 2
Maximum Pressure	35,852 kPa (5200 psi)
TRAVEL / UNDERCARRIAGE <i>Rubber tired, all-wheel drive, variable displacement motor with dual stage power shift transmission</i>	
Travel Speed	1st 0 – 4.5 mph (0 – 7 km/h) / 2nd 0 – 13 mph (0 – 20 km/h)
Tires	Duals: 8 X 14.00-24 / Singles: 4 X 17.5-25
Gradeability	36%
Steering	Joystick Steering
Front Axle	Oscillating with hydraulic lock
Rear Axle	Fixed
Parking Brake	Disc, spring actuated hydraulic release
Service Brake	Multidisc, wet
SWING SYSTEM	
Swing Speed	8 RPM
Torque	90 500 Nm (66,749 lb-ft)
ELECTRICAL	
Battery Capacity	1000 CCA
Alternator Rating	100 amp
Work Lights	LED, 11 total: 2 on boom, 2 on arm, 2 FR cab, 1 RR cab, 1 FR of upper house near DEF, 2 RR of upperhouse, 1 under hood
REFILL CAPACITIES	
Fuel Tank	514 L (136 gal)
Diesel Exhaust Fluid (DEF) Tank	35 L (9.2 gal)
Cooling System	36 L (9.5 gal)
Engine Oil with Filter	20.5 L (5 gal)
Hydraulic Tank	156 L (41 gal)
OPERATING WEIGHT	
16m front, full fuel tank, operator, single solid tire	38,736 kg (85,400 lb)
GENERATOR	
Rating	20 kW
Voltage	220 V
Drive	Hydraulic

LOAD CHART



Attachment weight is to be deducted from the values to get lift capacity (values represent load on yoke)

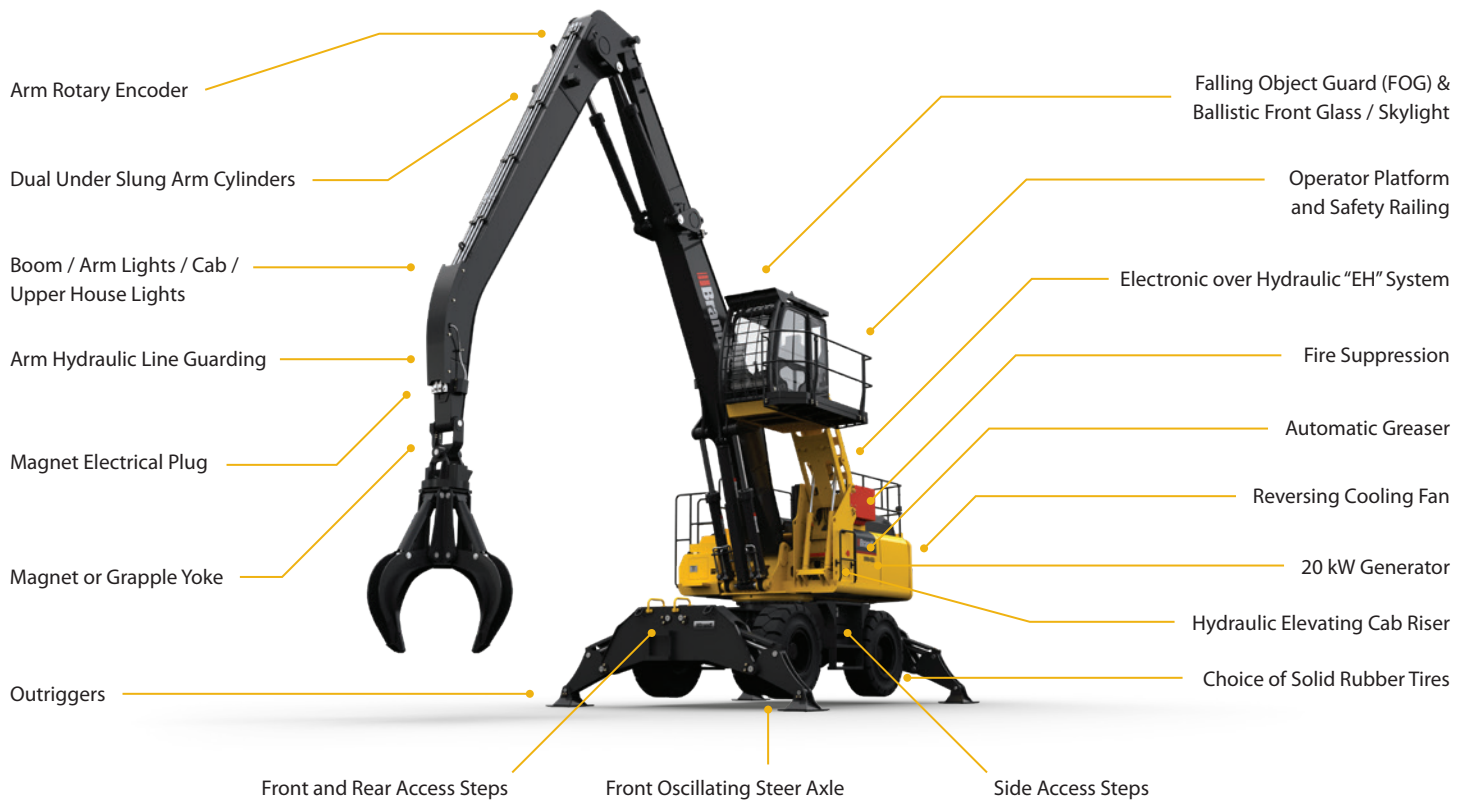
Values are in lbs and conform to ISO 10567 and ASME B30.25

Values are with outriggers down on firm level ground and can be slewed 360°

Values are based on machine using nitrogen system

Values are the smaller of: 75% tipping over side (shown in grey) / 87% hydraulic capacity (shown in yellow)

BMH40A MATERIAL HANDLER FEATURES



Fire Suppression

Optional powder fire suppression system automatically activates when flame is detected in engine bay. It can also be manually activated from the ground or in the cab.

FOG & Ballistic Glass

Polycarbonate front window is included standard, along with the front window/top of cab falling object guarding system (FOGS) that protects the operator and cab from large debris/material. Optional upgrades include boom-side and driver-side polycarbonate windows.

Visibility

The hydraulic cab riser offers a 19' operator view, while rear and boom side cameras help eliminate blind spots. Joystick steering comes standard, eliminating the steering column, increasing operator visibility, and improving overall operator leg room.

Reversing Cooling Fan

The cool-on-demand hydraulic reversing fan has programmed automatic reversing intervals, as well as manual activation, which back-blows cooler cores to reduce debris buildup. Additionally, the smaller radiators are swing out to allow greater access to all cooling cores. This design also ensures maximum fuel efficiency, reduced noise levels, and faster engine warm up.

Operator Comfort

All machine monitoring controls, climate controls, and audio buttons are easily accessible and require minimal operator hand movements. The standard leather heated and cooled adjustable air ride seat keeps operators comfortable for the entire shift.

Mobility

A wheeled undercarriage balances machine mobility and stability. The all-wheel drive, 2-speed transmission provides top speeds of up to 18 kilometres an hour. Full drivetrain guarding comes standard and protects critical components, while the swing away central guards allow easy maintenance access.

Access and Egress

The standard full-perimeter handrails on top of the machine protect operators while performing daily maintenance tasks. Three-point contact can be maintained by operators while accessing both the upper house and the undercarriage from the ground.

For more information:
Call us at **1-877-533-3133**
Email us at beslsales@brandt.ca
Or visit us at brandt.ca

Brandt Equipment Solutions
PO Box 1876, 302 Mill Street
Regina, SK, Canada
S4P 3E1

