

Hi-Rail Loader



Gear Up for Productivity.

Shift your output into high gear with the Hi-Rail Loader from Brandt. This innovative machine combines the efficiency of a Deere 544L and 624P with the flexibility of hydraulically controlled hi-rail gear.

① Versatility

The Hi-Rail Loader is your go-to multi-purpose loader on and off the tracks:

- Optional railcar coupler and train air allows this unit to safely pull railcars and tackle a wider range of jobs.
- Deere Hi-Vis Coupler enables compatibility with a variety of attachments, easily adapting to the task at hand.
- Hydraulically controlled hi-rail gear can be raised to take on jobs off the tracks as a regular wheel loader.

② Productivity

The Hi-Rail Loader delivers superior efficiency, wherever your operation needs it:

- On-rail capabilities allow the Hi-Rail Loader to easily and effectively clear snow off tracks.
- Near-parallel lift reduces load rollback to minimize spillage and reduce manual adjustments.
- Easy-to-use controls integrate seamlessly with the Deere control panel, making operation simple.

③ Reliability

This robust machine is a dependable asset that you can count on every single day:

- Optimized routing for wire harnesses and hydraulic hoses reduces premature wear and leakage.
- Unique hi-rail gear suspension delivers greater stability to better handle variations in track geometry and improve operator safety.
- Coast-to-coast 56-branch support network ensures parts and service are readily available, anywhere in Canada.

HI-RAIL LOADER SPECIFICATIONS

SPEC	HRL170 Z-BAR / HIGH-LIFT	HRL190 Z-BAR / HIGH-LIFT	HRL190 Tool Carrier
Rated Power	123 kW (166 hp) at 1700 rpm	143 kW (192 hp) at 1600 rpm	143 kW (192 hp) at 1600 rpm
Weight (less attachment)	14,968 kg (35,000 lb)	16,329 kg (37,000 lb)	16,329 kg (37,000 lb)
Length (bucket on ground)	Z-BAR: 7.64 m (25'1") HIGH-LIFT: 7.95 m (26'1")	Z-BAR: 7.89 m (25'11") HIGH-LIFT: 8.31 m (27'3")	7.99 m (26'2")
Width (Bucket)	2.68 m (8'10")	2.68 m (8'10")	2.68 m (8'10")
Hydraulic Flow	220 L/m (58 gpm)	261 L/m (69 gpm)	261 L/m (69 gpm)
Hydraulic Pressure	25,166 kPa (3650 psi)	24,821 kPa (3675 psi)	24,821 kPa (3675 psi)
Tire	17.5R25 Snow Tire	17.5R25 Snow Tire	17.5R25 Snow Tire
Bucket Hinge Pin Height (fully raised)	Z-BAR: 3.81 m (12'6") HIGH-LIFT: 4.09 m (13'5")	Z-BAR: 3.91 m (12'10") HIGH-LIFT: 4.26 m (14'0")	3.93 m (12'11")

FEATURES

Friction Drive Hub

Ensures contact with the drive tire using adjustable pressure to maintain tractive effort.

Deere Hi-Vis Coupler

Enables compatibility with buckets, snow blades, air blowers, snow blowers, forks, and sweepers/brooms.

Mechanical Hi-Rail Locks

Prevents the accidental deployment of the Hi-Rail gear when not on tracks and locks out steering when on tracks.

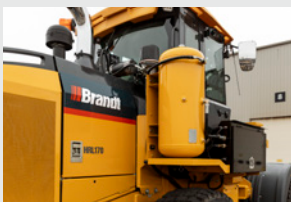
Single-Joystick Controls

Provides simple, ergonomic controls for all attachment functions, maximizing operator comfort.

Robust Design and Premium Components

Optimizes service life, reducing total cost of ownership.

ATTACHMENT OPTIONS



Train Air Brake Kit

- 24V, 8 CFM Electric Battery Driven Compressor
- 30 gal Tank Capacity
- Heated Air Dryer with Auto-Purge



Train Coupler Attachment

- Hi-Vis Lugging
- STD AAR Shelf Coupler
- Pivoting Knuckle with free-slide assembly
- 2-way Hydraulic Pin Rail Coupler (2-5 gpm, 3000 psi)

For more information:
Call us at **1-877-533-3133**
Email us at **beplsales@brandt.ca**
Or visit us at **brandt.ca**

Brandt Engineered Products
PO Box 1876, 302 Mill Street
Regina, SK, Canada
S4P 3E1

