

# 2154D



Engine	2154D Road Builder	2154D Processor	2154D Live / Fixed Heel	2154D Butt & Top	2154D Power Clam
Manufacturer and Model	John Deere 6068H				
Non-Road Emission Standards	EPA Tier 3/EU Stage IIIA				
Cylinders	6				
Engine Displacement	6.8 L (414 cu. in.)				
Net Peak Power (ISO 9249)	119 kW (159 hp)				
Aspiration	Turbocharged, air-to-air charge air cooler				
<b>Cooling</b>					
Fan Drive	Cool-on-demand hydraulic-driven, suction-type, remote-mounted drive				
Engine Coolant Rating	-37 deg. C (-34 deg. F)				
<b>Powertrain</b>					
2-speed propel with automatic shift					
Maximum Travel Speed					
Low	3.2 km/h (2.0 mph)				
High	5.1 km/h (3.2 mph)				
Controls	Pilot levers, short stroke, low effort; hydraulic pilot with shutoff lever				
<b>Hydraulics</b>					
Open center, load sensing					
Main Pump					
Maximum Rated Flow x 2	236 L/m (62.3 gpm)				
Pilot Pump (one gear)					
Maximum Rated Flow	35 L/m (9.2 gpm)				
Pressure Setting	3999 kPa (580 psi)				
Maximum Secondary Pump Flow	35 L/m (9.2 gpm)				
System Operating Pressure					
Implement Circuits	34 336 kPa (4,980 psi)				
Travel Circuits	34 336 kPa (4,980 psi)				
Swing Circuits	34 336 kPa (4,980 psi)				
Power Boost	36 335 kPa (5,270 psi)				
Auxiliary Hydraulic Flow	Adjustable through monitor				
<b>Cylinders</b>					
Heat-treated, chrome-plated, polished cylinder rods; hardened steel (replaceable bushings) pivot pins					
Boom (2)					
Bore	120 mm (4.72 in.)	120 mm (4.72 in.)	135 mm (5.32 in.)	135 mm (5.32 in.)	135 mm (5.32 in.)
Rod Diameter	85 mm (3.35 in.)	85 mm (3.35 in.)	95 mm (3.74 in.)	95 mm (3.74 in.)	95 mm (3.74 in.)
Stroke	1260 mm (49.61 in.)	1260 mm (49.61 in.)	1160 mm (45.67 in.)	1160 mm (45.67 in.)	1160 mm (45.67 in.)
Arm (1)					
Bore	135 mm (5.31 in.)	135 mm (5.31 in.)	145 mm (5.71 in.)	145 mm (5.71 in.)	145 mm (5.71 in.)
Rod Diameter	95 mm (3.74 in.)	95 mm (3.74 in.)	100 mm (3.94 in.)	100 mm (3.94 in.)	100 mm (3.94 in.)
Stroke	1475 mm (58.07 in.)	1475 mm (58.07 in.)	1555 mm (61.22 in.)	1555 mm (61.22 in.)	1555 mm (61.22 in.)
Bucket (1)					
Bore	115 mm (4.53 in.)	N/A	N/A	N/A	N/A
Rod Diameter	80 mm (3.15 in.)	N/A	N/A	N/A	N/A
Stroke	1060 mm (41.73 in.)	N/A	N/A	N/A	N/A
Heel (1)					
Bore	N/A	N/A	115 mm (4.53 in.) / N/A	N/A	N/A
Rod Diameter	N/A	N/A	80 mm (3.15 in.) / N/A	N/A	N/A
Stroke	N/A	N/A	1060 mm (41.73 in.) / N/A	N/A	N/A
Tilt (1)					
Bore	N/A	N/A	N/A	115 mm (4.53 in.)	115 mm (4.53 in.)
Rod Diameter	N/A	N/A	N/A	80 mm (3.15 in.)	80 mm (3.15 in.)
Stroke	N/A	N/A	N/A	1060 mm (41.73 in.)	1060 mm (41.73 in.)

Specifications are subject to change without notice.



Electrical	2154D Road Builder	2154D Processor	2154D Live / Fixed Heel	2154D Butt & Top	2154D Power Clam
Voltage	24 volt				
Batteries	2 x 12 volt				
Reserve Capacity	440 min.				
Alternator Rating	80 amp				
Undercarriage					
Carrier Rollers (per side)	2				
Track Rollers (per side)	8				
Shoes (per side)	48				
Drawbar Pull	22 634 kg (49,900 lb.)				
Track Adjustment	Hydraulic				
Track Guides	Center				
Upperstructure					
Counterweight, Standard	4001 kg (8,821 lb.)	4001 kg (8,821 lb.)	5175 kg (11,408 lb.)	5175 kg (11,408 lb.)	5175 kg (11,408 lb.)
Swing Mechanism					
Swing Speed	12.6 rpm				
Swing Torque	74 606 Nm (54,857 lb.-ft.)				
Ground Pressure					
700-mm (28 in.) Double-Grouser Shoes	54.0 kPa (7.77 psi)	49.0 kPa (7.16 psi)	54.0 kPa (7.77 psi) / 52.0 kPa (7.61 psi)	54.0 kPa (7.89 psi)	54.0 kPa (7.89 psi)
Refill Capacities					
Fuel Tank	1049.0 L (277.0 gal.)	1049.0 L (277.0 gal.)	1049.0 L (277.0 gal.)	1049.0 L (277.0 gal.)	1049.0 L (277.0 gal.)
Cooling System	26.0 L (6.9 gal.)	26.0 L (6.9 gal.)	26.0 L (6.9 gal.)	26.0 L (6.9 gal.)	26.0 L (6.9 gal.)
Engine Oil with Filter	23.0 L (6.0 gal.)	23.0 L (6.0 gal.)	23.0 L (6.0 gal.)	23.0 L (6.0 gal.)	23.0 L (6.0 gal.)
Hydraulic Tank	136.0 L (36.0 gal.)	136.0 L (36.0 gal.)	136.0 L (36.0 gal.)	136.0 L (36.0 gal.)	136.0 L (36.0 gal.)
Hydraulic System	257.0 L (68.0 gal.)	244.0 L (64.5 gal.)	257.0 L (68.0 gal.) / 248.0 L (65.5 gal.)	257.0 L (68.0 gal.)	257.0 L (68.0 gal.)
Propel Gearbox (each)	7.0 L (7.5 qt.)	7.0 L (7.5 qt.)	7.0 L (7.5 qt.)	7.0 L (7.5 qt.)	7.0 L (7.5 qt.)
Swing Gearbox	9.1 L (9.6 qt.)	9.1 L (9.6 qt.)	9.1 L (9.6 qt.)	9.1 L (9.6 qt.)	9.1 L (9.6 qt.)
Pump Drive Gearbox	1.0 L (1.1 qt.)	1.0 L (1.1 qt.)	1.0 L (1.1 qt.)	1.0 L (1.1 qt.)	1.0 L (1.1 qt.)
Operating Weights					
With 840-kg (1,818 lb.) full fuel tank, 79-kg (175 lb.) operator, and 700-mm (28 in.) double-grouser shoes					
	4000-kg (8,818 lb.) counterweight; 2.91-m (9 ft. 7 in.) arm; and 830-kg (1,830 lb.) bucket	4000-kg (8,818 lb.) counterweight and 2120-kg (4,673 lb.) processor head	5203-kg (11,490 lb.) counterweight and 816-kg (1,800 lb.) grapple (live) / 703-kg (1,550 lb.) grapple (fixed)	5203-kg (11,490 lb.) counterweight and 1996-kg (4,400 lb.) grapple	5203-kg (11,490 lb.) counterweight and 1996-kg (4,400 lb.) grapple
SAE Operating Weight	26 660 kg (58,775 lb.)	27 864 kg (61,430 lb.)	30 250 kg (66,690 lb.) / 29 638 kg (65,342 lb.)	30 733 kg (67,755 lb.)	30 733 kg (67,755 lb.)

**Lift Capacity — 2154D Road Builder with 2.91-m (9 ft. 7 in.) arm, 830-kg (1,830 lb.) bucket, and 700-mm (28 in.) shoes**

Load Point Height	1.5 m (5 ft.)		3.1 m (10 ft.)		4.6 m (15 ft.)		6.1 m (20 ft.)		7.6 m (25 ft.)	
	Over front	Over side	Over front	Over side	Over front	Over side	Over front	Over side	Over front	Over side
6.1 m (20 ft.)							<b>3651 kg</b> (8,048 lb.)	<b>3651 kg</b> (8,048 lb.)		
4.6 m (15 ft.)							<b>4069 kg</b> (8,970 lb.)	<b>4069 kg</b> (8,970 lb.)	<b>3889 kg</b> (8,574 lb.)	3306 kg (7,288 lb.)
3.1 m (10 ft.)					<b>6281 kg</b> (13,847 lb.)	<b>6281 kg</b> (13,847 lb.)	<b>4879 kg</b> (10,757 lb.)	4636 kg (10,221 lb.)	<b>4232 kg</b> (9,329 lb.)	3199 kg (7,052 lb.)
1.5 m (5 ft.)					<b>8214 kg</b> (18,108 lb.)	6713 kg (14,799 lb.)	<b>5791 kg</b> (12,766 lb.)	4366 kg (9,625 lb.)	<b>4676 kg</b> (10,309 lb.)	3067 kg (6,762 lb.)
Ground Line					<b>9212 kg</b> (20,308 lb.)	6386 kg (14,079 lb.)	<b>6463 kg</b> (14,248 lb.)	4163 kg (9,178 lb.)	4805 kg (10,593 lb.)	2957 kg (6,519 lb.)
-1.5 m (-5 ft.)			<b>6543 kg</b> (14,425 lb.)	<b>6543 kg</b> (14,425 lb.)	<b>9259 kg</b> (20,412 lb.)	6297 kg (13,883 lb.)	<b>6691 kg</b> (14,751 lb.)	4064 kg (8,960 lb.)	4742 kg (10,455 lb.)	2900 kg (6,393 lb.)
-3.1 m (-10 ft.)			<b>10 859 kg</b> (23,940 lb.)	<b>10 859 kg</b> (23,940 lb.)	<b>8605 kg</b> (18,971 lb.)	6340 kg (13,978 lb.)	<b>6363 kg</b> (14,028 lb.)	4067 kg (8,966 lb.)	<b>4679 kg</b> (10,316 lb.)	2926 kg (6,451 lb.)
-4.6 m (-15 ft.)			<b>9500 kg</b> (20,943 lb.)	<b>9500 kg</b> (20,943 lb.)	<b>7089 kg</b> (15,628 lb.)	6502 kg (14,334 lb.)	<b>5102 kg</b> (11,249 lb.)	4193 kg (9,244 lb.)		

**Lift Capacity — 2154D Processor with processor arm, 2177-kg (4,800 lb.) attachment, and 700-mm (28 in.) shoes**

Load Point Height	1.5 m (5 ft.)		3.1 m (10 ft.)		4.6 m (15 ft.)		6.1 m (20 ft.)		7.6 m (25 ft.)	
	Over front	Over side	Over front	Over side	Over front	Over side	Over front	Over side	Over front	Over side
9.2 m (30 ft.)					<b>3221 kg</b> (7,100 lb.)	<b>3221 kg</b> (7,100 lb.)				
7.6 m (25 ft.)							<b>2948 kg</b> (6,500 lb.)	<b>2948 kg</b> (6,500 lb.)		
6.1 m (20 ft.)					<b>3175 kg</b> (7,000 lb.)	<b>3175 kg</b> (7,000 lb.)	<b>3084 kg</b> (6,800 lb.)	<b>3084 kg</b> (6,800 lb.)	<b>2223 kg</b> (4,900 lb.)	<b>2223 kg</b> (4,900 lb.)
4.6 m (15 ft.)			<b>6078 kg</b> (13,400 lb.)	<b>6078 kg</b> (13,400 lb.)	<b>4445 kg</b> (9,800 lb.)	<b>4445 kg</b> (9,800 lb.)	<b>3629 kg</b> (8,000 lb.)	<b>3629 kg</b> (8,000 lb.)	<b>3221 kg</b> (7,100 lb.)	<b>3221 kg</b> (7,100 lb.)
3.1 m (10 ft.)			<b>11 068 kg</b> (24,400 lb.)	<b>11 068 kg</b> (24,400 lb.)	<b>6260 kg</b> (13,800 lb.)	<b>6260 kg</b> (13,800 lb.)	<b>4491 kg</b> (9,900 lb.)	<b>4491 kg</b> (9,900 lb.)	<b>3583 kg</b> (7,900 lb.)	<b>3357 kg</b> (7,400 lb.)
1.5 m (5 ft.)			<b>14 334 kg</b> (31,600 lb.)	<b>14 334 kg</b> (31,600 lb.)	<b>7847 kg</b> (17,300 lb.)	<b>7847 kg</b> (17,300 lb.)	<b>5307 kg</b> (11,700 lb.)	4944 kg (10,900 lb.)	<b>3992 kg</b> (8,800 lb.)	3221 kg (7,100 lb.)

Attachment weight is included when calculating the lift capacities.

**Boldface** type indicates hydraulic-limited capacities with power boost; **lightface** type indicates stability-limited capacities. Figures do not exceed 87 percent of hydraulic capacities or 75 percent of weight needed to tip machine.

**Lift Capacity — 2154D Live Heel with 816-kg (1,800 lb.) grapple and 700-mm (28 in.) shoes**

Load Point Height	4.6 m (15 ft.)		6.1 m (20 ft.)		7.6 m (25 ft.)		9.1 m (30 ft.)		10.7 m (35 ft.)	
	Over front	Over side	Over front	Over side	Over front	Over side	Over front	Over side	Over front	Over side
10.7 m (35 ft.)	<b>8260 kg</b> (18,210 lb.)	<b>8260 kg</b> (18,210 lb.)	<b>7362 kg</b> (16,230 lb.)	7135 kg (15,730 lb.)						
9.1 m (30 ft.)			<b>6486 kg</b> (14,300 lb.)	<b>6486 kg</b> (14,300 lb.)	<b>5924 kg</b> (13,060 lb.)	4867 kg (10,730 lb.)				
7.6 m (25 ft.)			<b>6355 kg</b> (14,010 lb.)	<b>6355 kg</b> (14,010 lb.)	<b>5684 kg</b> (12,530 lb.)	5103 kg (11,250 lb.)	4885 kg (10,770 lb.)	3642 kg (8,030 lb.)		
6.1 m (20 ft.)			<b>6641 kg</b> (14,640 lb.)	<b>6641 kg</b> (14,640 lb.)	<b>5783 kg</b> (12,750 lb.)	5144 kg (11,340 lb.)	4912 kg (10,830 lb.)	3665 kg (8,080 lb.)		
4.6 m (15 ft.)	<b>7616 kg</b> (16,790 lb.)	<b>7616 kg</b> (16,790 lb.)	<b>7262 kg</b> (16,010 lb.)	<b>7262 kg</b> (16,010 lb.)	<b>6078 kg</b> (13,400 lb.)	5067 kg (11,170 lb.)	4740 kg (10,450 lb.)	3502 kg (7,720 lb.)	3543 kg (7,810 lb.)	2554 kg (5,630 lb.)
3.1 m (10 ft.)	<b>9816 kg</b> (21,640 lb.)	<b>9816 kg</b> (21,640 lb.)	<b>8051 kg</b> (17,750 lb.)	7362 kg (16,230 lb.)	<b>6423 kg</b> (14,160 lb.)	4926 kg (10,860 lb.)	4731 kg (10,430 lb.)	3497 kg (7,710 lb.)	3529 kg (7,780 lb.)	2545 kg (5,610 lb.)

**Lift Capacity — 2154D Fixed Heel with 703-kg (1,550 lb.) grapple and 700-mm (28 in.) shoes**

Load Point Height	4.6 m (15 ft.)		6.1 m (20 ft.)		7.6 m (25 ft.)		9.1 m (30 ft.)		9.9 m (33.8 ft.)	
	Over front	Over side	Over front	Over side	Over front	Over side	Over front	Over side	Over front	Over side
10.7 m (35 ft.)	<b>7602 kg</b> (16,760 lb.)	<b>7602 kg</b> (16,760 lb.)								
9.1 m (30 ft.)			<b>7013 kg</b> (15,460 lb.)	<b>7013 kg</b> (15,460 lb.)						
7.6 m (25 ft.)			<b>6763 kg</b> (14,910 lb.)	<b>6763 kg</b> (14,910 lb.)	<b>6128 kg</b> (13,510 lb.)	5039 kg (11,110 lb.)				
6.1 m (20 ft.)			<b>6963 kg</b> (15,350 lb.)	<b>6963 kg</b> (15,350 lb.)	<b>6155 kg</b> (13,570 lb.)	5012 kg (11,050 lb.)	5049 kg (11,130 lb.)	3524 kg (7,770 lb.)		
4.6 m (15 ft.)	<b>9086 kg</b> (20,030 lb.)	<b>9086 kg</b> (20,030 lb.)	<b>7525 kg</b> (16,590 lb.)	7226 kg (15,930 lb.)	<b>6391 kg</b> (14,090 lb.)	4894 kg (10,790 lb.)	5008 kg (11,040 lb.)	3484 kg (7,680 lb.)		
3.1 m (10 ft.)	<b>10 791 kg</b> (23,790 lb.)	<b>10 791 kg</b> (23,790 lb.)	<b>8274 kg</b> (18,240 lb.)	6877 kg (15,160 lb.)	<b>6700 kg</b> (14,770 lb.)	4713 kg (10,390 lb.)	4917 kg (10,840 lb.)	3402 kg (7,500 lb.)		
1.5 m (5 ft.)	<b>12 261 kg</b> (27,030 lb.)	10 301 kg (22,710 lb.)	<b>8886 kg</b> (19,590 lb.)	6500 kg (14,330 lb.)	6518 kg (14,370 lb.)	4518 kg (9,960 lb.)	4813 kg (10,610 lb.)	3302 kg (7,280 lb.)	3928 kg (8,660 lb.)	2658 kg (5,860 lb.)
Ground Line	<b>12 592 kg</b> (27,760 lb.)	9702 kg (21,390 lb.)	<b>8977 kg</b> (19,790 lb.)	6192 kg (13,650 lb.)	6341 kg (13,980 lb.)	4355 kg (9,600 lb.)	4731 kg (10,430 lb.)	3225 kg (7,110 lb.)		

Attachment weight is included when calculating the lift capacities.

**Boldface** type indicates hydraulic-limited capacities with power boost; **lightface** type indicates stability-limited capacities.

Figures do not exceed 87 percent of hydraulic capacities or 75 percent of weight needed to tip machine.

**Lift Capacity — 2154D Butt & Top with 1996-kg (4,400 lb.) grapple and 700-mm (28 in.) shoes**

Load Point Height	3.1 m (10 ft.)		4.6 m (15 ft.)		6.1 m (20 ft.)		7.6 m (25 ft.)		9.1 m (30 ft.)	
	Over front	Over side	Over front	Over side	Over front	Over side	Over front	Over side	Over front	Over side
10.7 m (35 ft.)			<b>9008 kg</b> (19,860 lb.)	<b>9008 kg</b> (19,860 lb.)						
9.1 m (30 ft.)			<b>7620 kg</b> (16,800 lb.)	<b>7620 kg</b> (16,800 lb.)	<b>6595 kg</b> (14,540 lb.)	<b>6595 kg</b> (14,540 lb.)				
7.6 m (25 ft.)			<b>7285 kg</b> (16,060 lb.)	<b>7285 kg</b> (16,060 lb.)	<b>6278 kg</b> (13,840 lb.)	<b>6278 kg</b> (13,840 lb.)	<b>5520 kg</b> (12,170 lb.)	<b>4527 kg</b> (9,980 lb.)		
6.1 m (20 ft.)			<b>7711 kg</b> (17,000 lb.)	<b>7711 kg</b> (17,000 lb.)	<b>6459 kg</b> (14,240 lb.)	<b>6459 kg</b> (14,240 lb.)	<b>5498 kg</b> (12,120 lb.)	<b>4531 kg</b> (9,990 lb.)		
4.6 m (15 ft.)			<b>8886 kg</b> (19,590 lb.)	<b>8886 kg</b> (19,590 lb.)	<b>6990 kg</b> (15,410 lb.)	<b>6881 kg</b> (15,170 lb.)	<b>5693 kg</b> (12,550 lb.)	<b>4427 kg</b> (9,760 lb.)	<b>4173 kg</b> (9,200 lb.)	<b>2944 kg</b> (6,490 lb.)
3.1 m (10 ft.)					<b>7666 kg</b> (16,900 lb.)	<b>6559 kg</b> (14,460 lb.)	<b>5897 kg</b> (13,000 lb.)	<b>4268 kg</b> (9,410 lb.)	<b>4105 kg</b> (9,050 lb.)	<b>2880 kg</b> (6,350 lb.)

**Lift Capacity — 2154D Power Clam with 1996-kg (4,400 lb.) grapple and 700-mm (28 in.) shoes**

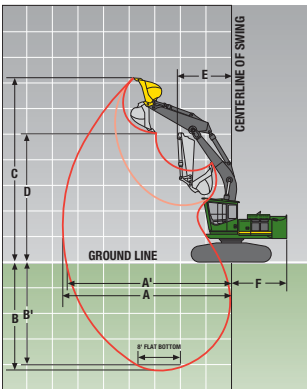
Load Point Height	3.1 m (10 ft.)		4.6 m (15 ft.)		6.1 m (20 ft.)		7.6 m (25 ft.)		9.1 m (30 ft.)		9.9 m (32.5 ft.)	
	Over front	Over side	Over front	Over side	Over front	Over side	Over front	Over side	Over front	Over side	Over front	Over side
10.7 m (35 ft.)			<b>9008 kg</b> (19,860 lb.)	<b>9008 kg</b> (19,860 lb.)								
9.1 m (30 ft.)			<b>7620 kg</b> (16,800 lb.)	<b>7620 kg</b> (16,800 lb.)	<b>6595 kg</b> (14,540 lb.)	<b>6595 kg</b> (14,540 lb.)						
7.6 m (25 ft.)			<b>7285 kg</b> (16,060 lb.)	<b>7285 kg</b> (16,060 lb.)	<b>6278 kg</b> (13,840 lb.)	<b>6278 kg</b> (13,840 lb.)	<b>5520 kg</b> (12,170 lb.)	<b>4527 kg</b> (9,980 lb.)				
6.1 m (20 ft.)			<b>7711 kg</b> (17,000 lb.)	<b>7711 kg</b> (17,000 lb.)	<b>6459 kg</b> (14,240 lb.)	<b>6459 kg</b> (14,240 lb.)	<b>5498 kg</b> (12,120 lb.)	<b>4531 kg</b> (9,990 lb.)				
4.6 m (15 ft.)			<b>8886 kg</b> (19,590 lb.)	<b>8886 kg</b> (19,590 lb.)	<b>6990 kg</b> (15,410 lb.)	<b>6881 kg</b> (15,170 lb.)	<b>5693 kg</b> (12,550 lb.)	<b>4427 kg</b> (9,760 lb.)	<b>4173 kg</b> (9,200 lb.)	<b>2944 kg</b> (6,490 lb.)		
3.1 m (10 ft.)					<b>7666 kg</b> (16,900 lb.)	<b>6559 kg</b> (14,460 lb.)	<b>5897 kg</b> (13,000 lb.)	<b>4268 kg</b> (9,410 lb.)	<b>4105 kg</b> (9,050 lb.)	<b>2880 kg</b> (6,350 lb.)		
1.5 m (5 ft.)					<b>8128 kg</b> (17,920 lb.)	<b>6214 kg</b> (13,700 lb.)	<b>5715 kg</b> (12,600 lb.)	<b>4096 kg</b> (9,030 lb.)	<b>4023 kg</b> (8,870 lb.)	<b>2803 kg</b> (6,180 lb.)	<b>3420 kg</b> (7,540 lb.)	<b>2336 kg</b> (5,150 lb.)

Attachment weight is included when calculating the lift capacities.

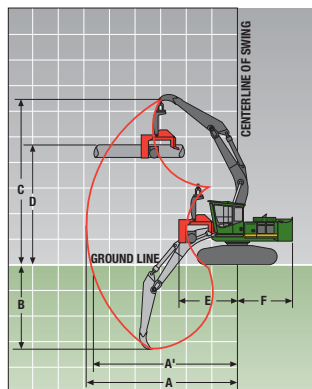
**Boldface** type indicates hydraulic-limited capacities with power boost; **lightface** type indicates stability-limited capacities. Figures do not exceed 87 percent of hydraulic capacities or 75 percent of weight needed to tip machine.

Operating Dimensions	2154D Road Builder	2154D Processor	2154D Live / Fixed Heel	2154D Butt & Top	2154D Power Clam
Lifting Capacity Over Front at Ground Level, 6.1-m (20 ft.) Reach (with power boost) and Attachment	6463 kg (14,248 lb.)	5806 kg (12,800 lb.)	8822 kg (19,450 lb.) / 8977 kg (19,790 lb.)	8001 kg (17,640 lb.)	8001 kg (17,640 lb.)
<b>A</b> Maximum Reach	9.87 m (32 ft. 5 in.)	8.76 m (28 ft. 9 in.)	10.98 m (36 ft. 0 in.) / 10.31 m (33 ft. 10 in.)	9.94 m (32 ft. 7 in.)	9.94 m (32 ft. 7 in.)
<b>A'</b> Maximum Reach at Ground Level	9.64 m (31 ft. 8 in.)	8.51 m (27 ft. 11 in.)	10.77 m (35 ft. 4 in.) / 10.10 m (33 ft. 2 in.)	9.71 m (31 ft. 10 in.)	9.71 m (31 ft. 10 in.)
<b>B</b> Maximum Depth	6.17 m (20 ft. 3 in.)	4.80 m (15 ft. 9 in.)	4.32 m (14 ft. 2 in.) / 3.82 m (12 ft. 6 in.)	3.30 m (10 ft. 10 in.)	3.30 m (10 ft. 10 in.)
<b>C</b> Maximum Height	10.34 m (33 ft. 11 in.)	9.64 m (31 ft. 7 in.)	12.65 m (41 ft. 6 in.) / 11.82 m (38 ft. 9 in.)	11.60 m (38 ft. 0 in.)	11.60 m (38 ft. 0 in.)
<b>D</b> Maximum Log-Level Height	N/A	7.36 m (24 ft. 2 in.)	8.12 m (26 ft. 8 in.) / 7.74 m (25 ft. 5 in.)	8.23 m (27 ft. 0 in.)	8.00 m (26 ft. 3 in.)
<b>E</b> Minimum Swing Radius	3.04 m (9 ft. 11 in.)	3.10 m (10 ft. 2 in.)	4.23 m (13 ft. 11 in.) / 4.88 m (16 ft. 0 in.)	4.57 m (15 ft. 0 in.)	4.27 m (14 ft. 0 in.)
<b>F</b> Tail Swing Radius	3.10 m (10 ft. 2 in.)	3.10 m (10 ft. 2 in.)	3.10 m (10 ft. 2 in.)	3.10 m (10 ft. 2 in.)	3.10 m (10 ft. 2 in.)

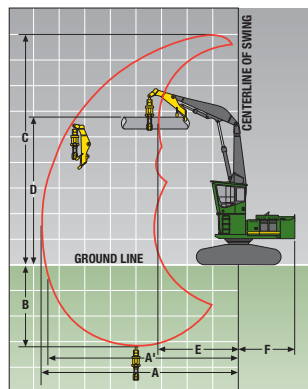
2154D Road-BUILDER Envelope



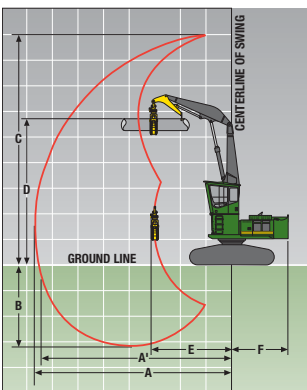
2154D Processor Envelope



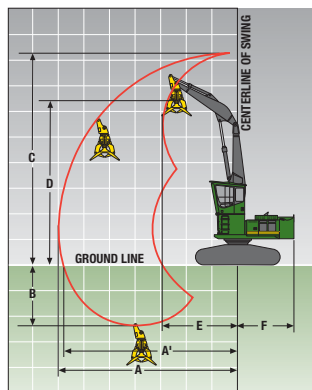
2154D Live-Heel Envelope



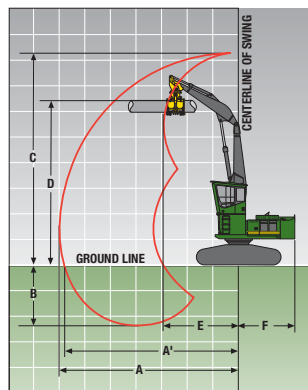
2154D Fixed-Heel Envelope



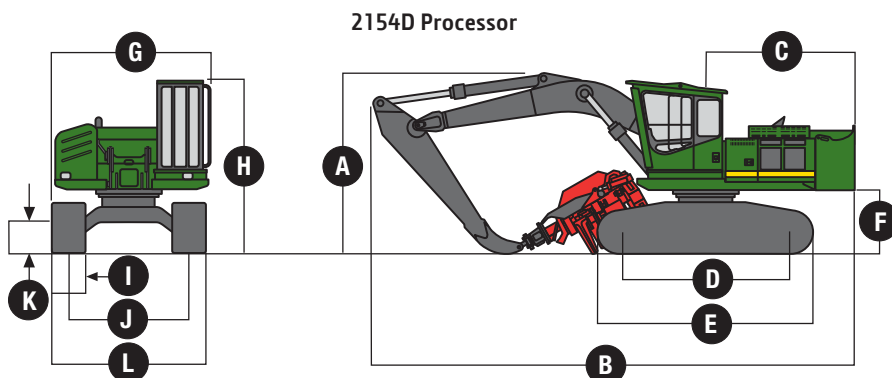
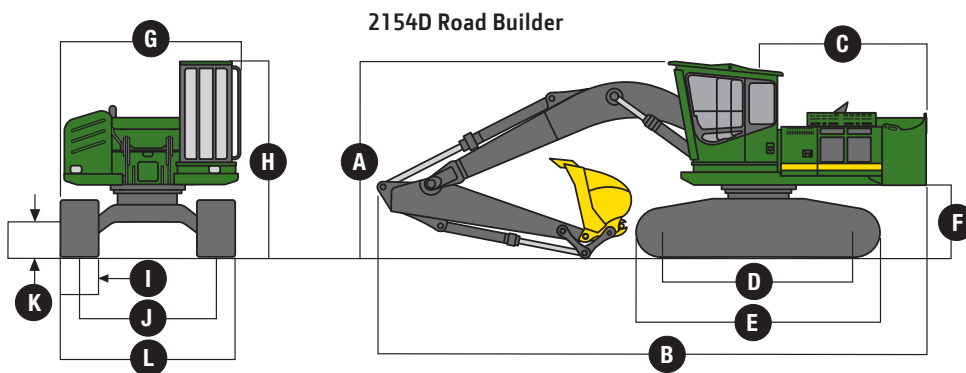
2154D Butt & Top Envelope



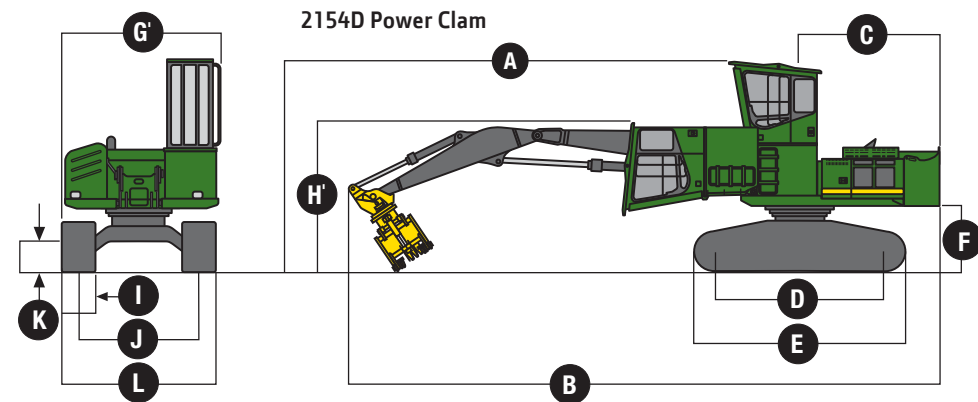
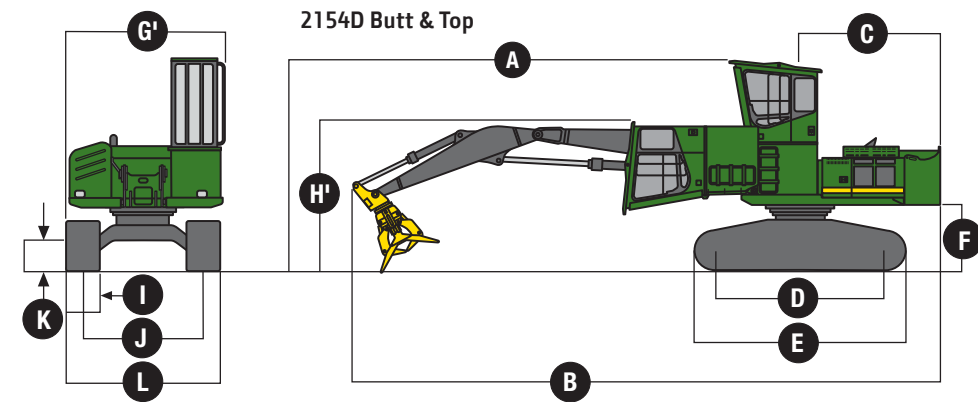
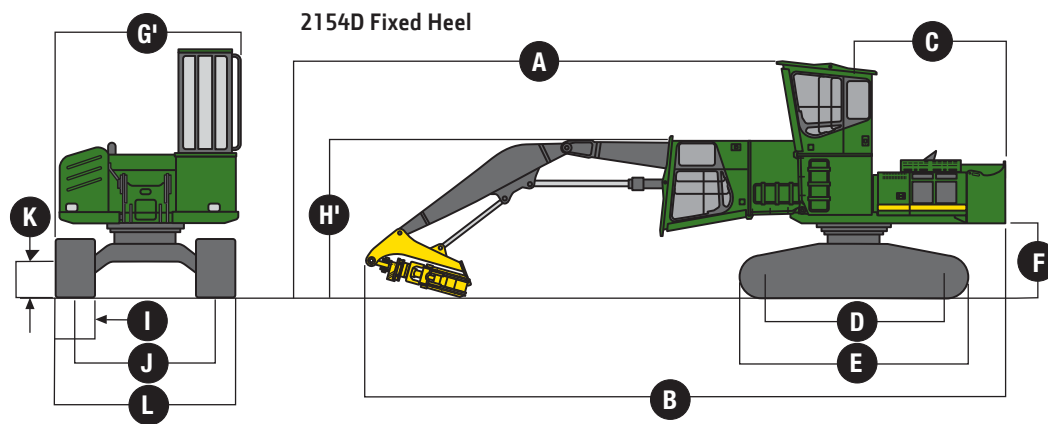
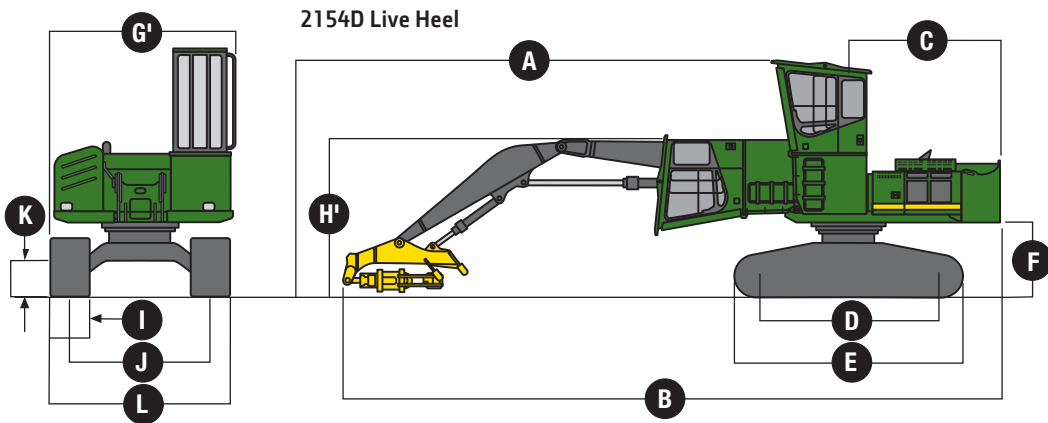
2154D Power-Clam Envelope



Machine Dimensions	2154D Road Builder	2154D Processor	2154D Live / Fixed Heel	2154D Butt & Top	2154D Power Clam
<b>A</b> Height	2.93 m (9 ft. 7 in.)	3.61 m (11 ft. 10 in.)	4.76 m (15 ft. 7 in.) / 4.71 m (15 ft. 5 in.)	4.76 m (15 ft. 7 in.)	4.76 m (15 ft. 7 in.)
<b>B</b> Overall Length	9.86 m (32 ft. 4 in.)	9.88 m (32 ft. 5 in.)	13.52 m (44 ft. 4 in.) / 12.98 m (42 ft. 7 in.)	13.69 m (44 ft. 11 in.)	13.76 m (45 ft. 2 in.)
<b>C</b> Rear-End Length / Swing Radius	3.10 m (10 ft. 2 in.)	3.10 m (10 ft. 2 in.)	3.10 m (10 ft. 2 in.)	3.10 m (10 ft. 2 in.)	3.10 m (10 ft. 2 in.)
<b>D</b> Distance Between Idler / Sprocket Centerline	3.66 m (12 ft. 0 in.)	3.66 m (12 ft. 0 in.)	3.66 m (12 ft. 0 in.)	3.66 m (12 ft. 0 in.)	3.66 m (12 ft. 0 in.)
<b>E</b> Undercarriage Length	4.45 m (14 ft. 7 in.)	4.45 m (14 ft. 7 in.)	4.45 m (14 ft. 7 in.)	4.45 m (14 ft. 7 in.)	4.45 m (14 ft. 7 in.)
<b>F</b> Counterweight Clearance	1.33 m (4 ft. 4 in.)	1.33 m (4 ft. 4 in.)	1.38 m (4 ft. 6 in.) / 1.33 m (4 ft. 4 in.)	1.38 m (4 ft. 6 in.)	1.38 m (4 ft. 6 in.)
<b>G</b> Upperstructure Width	3.36 m (11 ft. 0 in.)	3.36 m (11 ft. 0 in.)	N/A	N/A	N/A
<b>G'</b> Upperstructure Width with 1219-mm (48 in.) Side-Entry Cab	N/A	N/A	3.50 m (11 ft. 6 in.) / 3.41 m (11 ft. 2 in.)	3.50 m (11 ft. 6 in.)	3.50 m (11 ft. 6 in.)
Rear Entry	N/A	N/A	3.54 m (11 ft. 7 in.) / 3.45 m (11 ft. 4 in.)	3.54 m (11 ft. 7 in.)	3.54 m (11 ft. 7 in.)
<b>H</b> Cab Height (Transport)	3.68 m (12 ft. 1 in.)	3.68 m (12 ft. 1 in.)	N/A	N/A	N/A
<b>H'</b> Cab Height (Transport) with 1219-mm (48 in.) Side-Entry Cab	N/A	N/A	3.34 m (10 ft. 11 in.) / 3.29 m (10 ft. 9 in.)	3.39 m (11 ft. 1 in.)	3.45 m (11 ft. 4 in.)
Rear Entry	N/A	N/A	3.43 m (11 ft. 3 in.) / 3.38 m (11 ft. 1 in.)	3.43 m (11 ft. 3 in.)	3.45 m (11 ft. 4 in.)
<b>I</b> Track Width (700-mm [28 in.] double-grouser shoes)	0.70 m (2 ft. 4 in.)	0.70 m (2 ft. 4 in.)	0.70 m (2 ft. 4 in.)	0.70 m (2 ft. 4 in.)	0.70 m (2 ft. 4 in.)
<b>J</b> Gauge Width	2.62 m (8 ft. 7 in.)	2.62 m (8 ft. 7 in.)	2.79 m (9 ft. 2 in.) / 2.62 m (8 ft. 7 in.)	2.79 m (9 ft. 2 in.)	2.79 m (9 ft. 2 in.)
<b>K</b> Ground Clearance	0.66 m (2 ft. 2 in.)	0.66 m (2 ft. 2 in.)	0.71 m (2 ft. 4 in.) / 0.66 m (2 ft. 2 in.)	0.71 m (2 ft. 4 in.)	0.71 m (2 ft. 4 in.)
<b>L</b> Undercarriage Width	3.32 m (10 ft. 11 in.)	3.32 m (10 ft. 11 in.)	3.49 m (11 ft. 6 in.) / 3.32 m (10 ft. 11 in.)	3.49 m (11 ft. 6 in.)	3.49 m (11 ft. 6 in.)



Machine not exactly as shown. Illustrations for dimensioning purposes only.



Machine not exactly as shown. Illustrations for dimensioning purposes only.