

803M/853M/859M

Engine	803M/853M/859M					
Manufacturer and Model	John Deere PowerTech™ Plus 6090H					
Non-Road Emission Standard	EPA Tier 3/EU Stage IIIA					
Cylinders	6					
Displacement	9.0 L (549 cu. in.)					
Peak Power at 1,900 rpm	224 kW (300 hp)					
Rated Power at 2,000 rpm	213 kW (286 hp)					
Net Peak Torque at 1,500 rpm	1270 Nm (937 lb.-ft.)					
Cooling						
Fan Type	Suction type, hydraulically driven, variable speed, reversing					
Hydraulics						
Closed center, load sense, pressure compensated						
Standard Travel System						
Main Pump	Variable-displacement axial piston					
Maximum Rated Flow	494 L/min. (131 gpm)					
Continuous Saw Pump	Dedicated variable-displacement axial piston					
Maximum Rated Flow	135 L/min. (36 gpm)					
Attachment Pump	Dedicated variable-displacement axial piston					
Maximum Rated Flow	135 L/min. (36 gpm)					
Closed-Loop Hydrostatic Drive						
Main Pump – Dedicated Travel	Variable-displacement axial piston					
Maximum Rated Flow	494 L/min. (131 gpm)					
Travel Pump	Dedicated variable-displacement axial piston					
Maximum Rated Flow (x2)	190 L/min. (50 gpm)					
Continuous Saw Pump	Dedicated variable-displacement axial piston					
Maximum Rated Flow	135 L/min. (36 gpm)					
Attachment Pump	Dedicated variable-displacement axial piston					
Maximum Rated Flow	135 L/min. (36 gpm)					
Oil Filtration	2 main return filters, 10-micron return with bypass, one case drain strainer, 25 micron					
Electrical						
Voltage	24 volt					
Number of Batteries	2 x 12 volt					
Alternator Rating						
Standard	100 amp					
Optional	130 amp					
Work Lights						
Standard	Halogen (12)					
Optional	LED (12)					
Service Lights	Halogen (2)					
Undercarriage	803M	853M			859M	
Integral track guides, thick high-abrasion-resistant material, ramp angles, hydraulic track adjustment						
Size	U6 HD	U7 HD			U7 EXD	
Track Chain	203.2 mm (8 in.)	215.9 mm (8.5 in.)			215.9 mm (8.5 in.)	
Number of Track Links (per side)	47	47			47	
Lower Rollers (per side)	9	9			10	
Carrier Slides / Rollers (per side)	2	2			2	
Travel Performance			<i>Closed-Loop Hydrostatic Drive</i>			<i>Closed-Loop Hydrostatic Drive</i>
	<i>Standard</i>		<i>Standard</i>	<i>Closed-Loop Hydrostatic Drive</i>	<i>Standard</i>	<i>Closed-Loop Hydrostatic Drive</i>
Travel Speed, Forward and Reverse						
High	4.9 km/h (3.0 mph)	4.9 km/h (3.0 mph)	4.2 km/h (2.6 mph)	4.2 km/h (2.6 mph)	3.6 km/h (2.2 mph)	3.6 km/h (2.2 mph)
Low	2.7 km/h (1.7 mph)	2.7 km/h (1.7 mph)	2.1 km/h (1.3 mph)	1.9 km/h (1.2 mph)	1.7 km/h (1.0 mph)	1.6 km/h (1.0 mph)
Tractive Effort	245 kN (55,040 lbf)	245 kN (55,040 lbf)	322 kN (72,300 lbf)	331 kN (74,320 lbf)	373 kN (83,880 lbf)	384 kN (86,210 lbf)
Rotating Upper	803M/853M/859M					
Swing System	<i>Standard</i>		<i>Optional</i>			
Swing Speed (maximum)	7.7 rpm		6.8 rpm			
Swing Torque	55 090 Nm (40,630 lb.-ft.)		80 170 Nm (59,130 lb.-ft.)			
Swing Brake	Sealed wet multi-disc, manually applied/released					
Serviceability						
Fuel Tank	870 L (230 gal.)					

Machine not exactly as shown. Illustrations for dimensioning purposes only. Specifications are subject to change without notice.

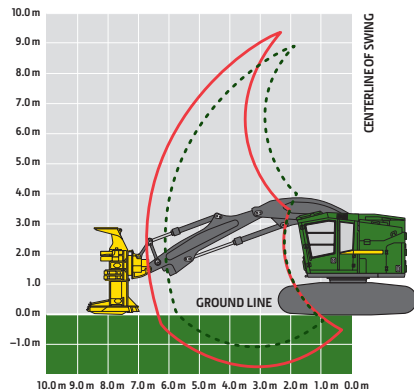


Ground Pressure (SAE J1309, standard machine, less attachment)	803M	853M	859M
Undercarriage	U6 HD	U7 HD	U7 EXD
Double Grouser			
610 mm (24 in.)	58.1 kPa (8.4 psi)	57.8 kPa (8.4 psi)	68.2 kPa (9.9 psi)
762 mm (30 in.)	47.4 kPa (6.9 psi)	47.3 kPa (6.9 psi)	N/A
Single Grouser			
610 mm (24 in.)	57.7 kPa (8.4 psi)	57.7 kPa (8.4 psi)	68.0 kPa (9.9 psi)
711 mm (28 in.)	50.1 kPa (7.3 psi)	50.2 kPa (7.3 psi)	59.1 kPa (8.6 psi)
Triple Grouser (soft terrain only)			
914 mm (36 in.)	40.5 kPa (5.9 psi)	40.4 kPa (5.9 psi)	N/A

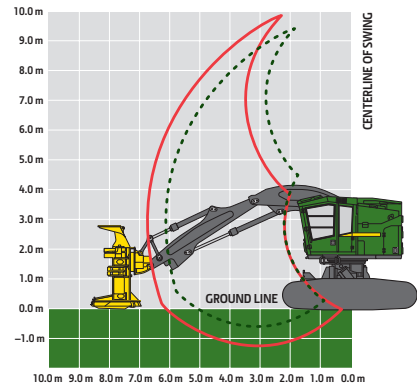
Operating Weight			
Includes standard equipment, 610-mm (24 in.) single-grouser tracks, standard counterweight, half-full fuel tank, and all fluids, less attachment			
Undercarriage	U6 HD	U7 HD	U7 EXD
Approximate Weight — Base Machine	28 250 kg (62,290 lb.)	30 170 kg (66,520 lb.)	35 450 kg (78,170 lb.)

Boom Performance			
6.71-m Boom			
Maximum Reach (to tip of saw blade)	8.49 m (27 ft. 10 in.)	8.49 m (27 ft. 10 in.)	8.49 m (27 ft. 10 in.)
Minimum Reach (to tip of saw blade)	3.83 m (12 ft. 7 in.)	3.83 m (12 ft. 7 in.)	3.83 m (12 ft. 7 in.)
Cutting Swath	4.66 m (15 ft. 3 in.)	4.66 m (15 ft. 3 in.)	4.66 m (15 ft. 3 in.)
Lift Option	Standard	Power	Power
Lift Capacity, Bare Pin at Full Reach	4400 kg (9,700 lb.)	5540 kg (12,220 lb.)	5540 kg (12,220 lb.)
Lift Capacity, Bare Pin at 6.1 m (20 ft.)	5520 kg (12,170 lb.)	6860 kg (15,130 lb.)	6860 kg (15,130 lb.)
Lift Capacity, Bare Pin at 4.6 m (15 ft.)	7990 kg (17,620 lb.)	9770 kg (21,540 lb.)	9770 kg (21,540 lb.)
6.1-m Boom			
Maximum Reach (to tip of saw blade)	7.88 m (25 ft. 10 in.)	7.88 m (25 ft. 10 in.)	7.88 m (25 ft. 10 in.)
Minimum Reach (to tip of saw blade)	3.92 m (12 ft. 10 in.)	3.92 m (12 ft. 10 in.)	3.92 m (12 ft. 10 in.)
Cutting Swath	3.96 m (13 ft. 0 in.)	3.96 m (13 ft. 0 in.)	3.96 m (13 ft. 0 in.)
Lift Option	Standard	Power	Power
Lift Capacity, Bare Pin at 6.1 m (20 ft.) at Full Reach	4830 kg (10,650 lb.)	6670 kg (14,710 lb.)	6670 kg (14,710 lb.)
Lift Capacity, Bare Pin at 4.6 m (15 ft.)	7840 kg (17,290 lb.)	10 510 kg (23,170 lb.)	10 510 kg (23,170 lb.)

803M and 853M Tracked Feller Bunchers



859M Tracked Feller Buncher

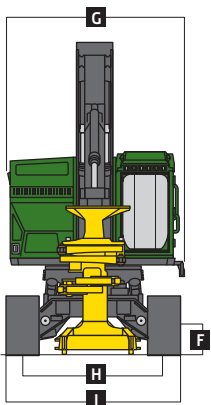
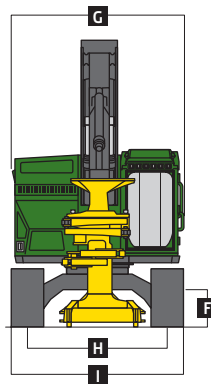
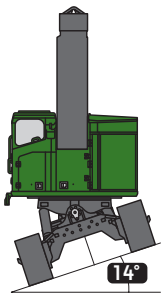
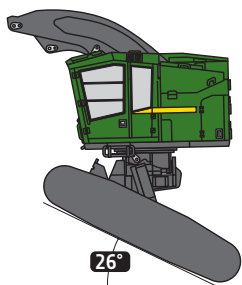


Attachment Information						
Attachment	FS20	FR21B	FS22B	FR22B	FS24B	
Models	803M	803M, 853M, 859M	803M, 853M, 859M	803M, 853M, 859M	853M, 859M	
Maximum Cutting Capacity	559 mm (22.0 in.)	545 mm (21.5 in.)	559 mm (22.0 in.)	559 mm (22.0 in.)	622 mm (24.5 in.)	
Maximum Accumulation Capacity	0.43 m ² (4.6 sq. ft.)	0.46 m ² (5.0 sq. ft.)	0.48 m ² (5.2 sq. ft.)	0.48 m ² (5.2 sq. ft.)	0.60 m ² (6.5 sq. ft.)	
Opening at Front of Housing	983 mm (38.7 in.)	1180 mm (46.5 in.)	1280 mm (50.4 in.)	1280 mm (50.4 in.)	1372 mm (54.0 in.)	
Blade Diameter	1422 mm (56.0 in.)	1372 mm (54.0 in.)	1422 mm (56.0 in.)	1422 mm (56.0 in.)	1549 mm (61.0 in.)	
Number of Teeth	18	18	18	18	20	
Saw rpm	1,150 rpm	1,150 rpm	1,150 rpm	1,150 rpm	1,150 rpm	
Wrist Rotation	30 deg.	302 deg.	30 deg.	312 deg.	310 deg.	
Width at Saw Housing	1600 mm (63.0 in.)	1550 mm (61.0 in.)	1620 mm (63.8 in.)	1620 mm (63.8 in.)	1737 mm (68.4 in.)	
Height	2794 mm (110.0 in.)	2820 mm (111.0 in.)	3068 mm (120.8 in.)	3068 mm (120.8 in.)	3068 mm (120.8 in.)	
Weight (including adapter and wrist)	2650 kg (5,840 lb.)	3140 kg (6,920 lb.)	3550 kg (7,830 lb.)	3840 kg (8,470 lb.)	4020 kg (8,860 lb.)	

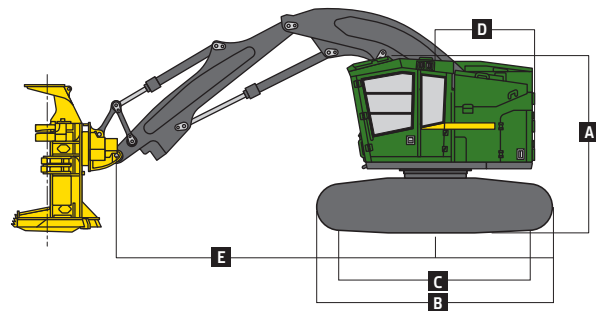
803M/853M/859M

Machine Dimensions	803M	853M	859M
Standard Undercarriage	U6 HD	U7 HD	U7 EXD
A Overall Height with 6.71-m Boom			
Top of Cab with Flat Skylight	3.43 m (11 ft. 3 in.)	3.46 m (11 ft. 4 in.)	3.92 m (12 ft. 10 in.)
Top of Cab with Peaked Skylight	3.65 m (12 ft. 0 in.)	3.68 m (12 ft. 1 in.)	4.13 m (13 ft. 7 in.)
Top of Boom, Extended, Attachment Vertical	3.89 m (12 ft. 9 in.)	3.93 m (12 ft. 11 in.)	4.15 m (13 ft. 7 in.)
B Overall Track Length	4.61 m (15 ft. 1 in.)	4.90 m (16 ft. 1 in.)	4.90 m (16 ft. 1 in.)
C Track Length (idler to sprocket center)	3.57 m (11 ft. 9 in.)	3.83 m (12 ft. 7 in.)	3.83 m (12 ft. 7 in.)
D Tail Swing (from swing center)			
Small and Medium Counterweight	1.94 m (6 ft. 4 in.)	1.94 m (6 ft. 4 in.)	1.94 m (6 ft. 4 in.)
Medium and Large Extended Counterweight	2.25 m (7 ft. 4 in.)	2.25 m (7 ft. 4 in.)	2.25 m (7 ft. 4 in.)
E Boom Reach (to attachment pin)			
6.71-m Boom			
Maximum	6.71 m (22 ft. 0 in.)	6.71 m (22 ft. 0 in.)	6.71 m (22 ft. 0 in.)
Minimum	2.05 m (6 ft. 9 in.)	2.05 m (6 ft. 9 in.)	2.05 m (6 ft. 9 in.)
Cutting Swath	4.66 m (15 ft. 3 in.)	4.66 m (15 ft. 3 in.)	4.66 m (15 ft. 3 in.)
6.10-m Boom			
Maximum	6.10 m (20 ft. 0 in.)	6.10 m (20 ft. 0 in.)	6.10 m (20 ft. 0 in.)
Minimum	2.14 m (7 ft. 0 in.)	2.14 m (7 ft. 0 in.)	2.14 m (7 ft. 0 in.)
Cutting Swath	3.96 m (13 ft. 0 in.)	3.96 m (13 ft. 0 in.)	3.96 m (13 ft. 0 in.)
F Ground Clearance			
Single Grouser	744 mm (29 in.)	779 mm (31 in.)	746 mm (29 in.)
Double Grouser	715 mm (28 in.)	756 mm (30 in.)	722 mm (28 in.)
Triple Grouser	700 mm (28 in.)	738 mm (29 in.)	N/A
G Upperstructure Width			
Standard	3.15 m (10 ft. 4 in.)	3.15 m (10 ft. 4 in.)	3.15 m (10 ft. 4 in.)
With Optional Walkway	3.36 m (11 ft. 0 in.)	3.36 m (11 ft. 0 in.)	3.36 m (11 ft. 0 in.)
H Track Gauge	2.67 m (8 ft. 9 in.)	2.69 m (8 ft. 10 in.)	2.72 m (8 ft. 11 in.)
I Width Over Tracks			
610-mm (24 in.) Track Shoes	3.28 m (10 ft. 9 in.)	3.30 m (10 ft. 10 in.)	3.33 m (10 ft. 11 in.)
711-mm (28 in.) Track Shoes	3.38 m (11 ft. 1 in.)	3.40 m (11 ft. 2 in.)	3.43 m (11 ft. 3 in.)
760-mm (30 in.) Track Shoes	3.43 m (11 ft. 3 in.)	3.45 m (11 ft. 4 in.)	N/A
914-mm (36 in.) Track Shoes	3.58 m (11 ft. 9 in.)	3.61 m (11 ft. 10 in.)	N/A

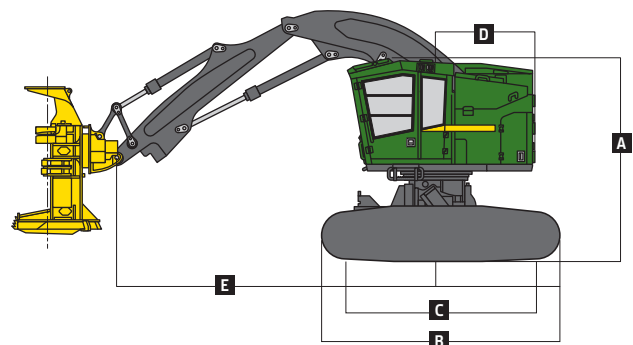
859M Leveling



803M / 853M Tracked Feller Bunchers



859M Tracked Feller Buncher



859M Undercarriage-Leveling Mechanism

Forward	26 deg.
Side to Side	14 deg.
Rearward	7 deg.

Machine not exactly as shown. Illustrations for dimensioning purposes only. Specifications are subject to change without notice.

803MH/853MH/859MH

Engine		803MH/853MH/859MH					
Manufacturer and Model	John Deere PowerTech™ Plus 6090H						
Non-Road Emission Standard	EPA Tier 3/EU Stage IIIA						
Cylinders	6						
Displacement	9.0 L (549 cu. in.)						
Peak Power at 1,900 rpm	224 kW (300 hp)						
Rated Power at 2,000 rpm	213 kW (286 hp)						
Net Peak Torque at 1,500 rpm	1270 Nm (937 lb.-ft.)						
Cooling							
Fan Type	Suction type, hydraulically driven, variable speed, reversing						
Hydraulics							
Closed center, load sense, pressure compensated							
Standard Travel System							
Main Pump		Variable-displacement axial piston					
Maximum Rated Flow	494 L/min. (131 gpm)						
Attachment Pump		Dedicated variable-displacement axial piston					
Maximum Rated Flow (x2)	135 L/min. (36 gpm)						
Closed-Loop Hydrostatic Drive							
Main Pump – Dedicated Travel		Variable-displacement axial piston					
Maximum Rated Flow	494 L/min. (131 gpm)						
Travel Pump		Dedicated variable-displacement axial piston					
Maximum Rated Flow (x2)	190 L/min. (50 gpm)						
Attachment Pump		Dedicated variable-displacement axial piston					
Maximum Rated Flow (x2)	135 L/min. (36 gpm)						
Oil Filtration	2 main return filters, 10-micron return with bypass, one case drain strainer, 25 micron						
Electrical							
Voltage	24 volt						
Number of Batteries	2 x 12 volt						
Alternator Rating							
Standard	100 amp						
Optional	130 amp						
Work Lights							
Standard	Halogen (12)						
Optional	LED (12)						
Service Lights	Halogen (2)						
Undercarriage		803MH	853MH	859MH			
Integral track guides, thick high-abrasion-resistant material, ramp angles, hydraulic track adjustment							
Size	U6 HD		U7 HD		U7L EXD		
Track Chain	203.2 mm (8 in.)		215.9 mm (8.5 in.)		215.9 mm (8.5 in.)		
Number of Track Links (per side)	47		47		47		
Lower Rollers (per side)	9		9		10		
Carrier Slides / Rollers (per side)	2		2		2		
Travel Performance		<i>Closed-Loop Hydrostatic Drive</i>		<i>Closed-Loop Hydrostatic Drive</i>		<i>Closed-Loop Hydrostatic Drive</i>	
Travel Speed, Forward and Reverse	<i>Standard</i>		<i>Standard</i>		<i>Standard</i>		
High	4.9 km/h (3.0 mph)	4.9 km/h (3.0 mph)	4.2 km/h (2.6 mph)	4.2 km/h (2.6 mph)	3.6 km/h (2.2 mph)	3.6 km/h (2.2 mph)	
Low	2.7 km/h (1.7 mph)	2.7 km/h (1.7 mph)	2.1 km/h (1.3 mph)	1.9 km/h (1.2 mph)	1.7 km/h (1.0 mph)	1.6 km/h (1.0 mph)	
Tractive Effort	245 kN (55,040 lbf)	245 kN (55,040 lbf)	322 kN (72,300 lbf)	331 kN (74,320 lbf)	373 kN (83,880 lbf)	384 kN (86,210 lbf)	
Rotating Upper		803MH/853MH/859MH					
Swing System, Standard							
Swing Speed (maximum)	6.7 rpm						
Swing Torque	80 170 Nm (59,130 lb.-ft.)						
Swing Brake	Sealed wet multi-disc, manually applied/released						
Serviceability							
Fuel Tank	870 L (230 gal.)						

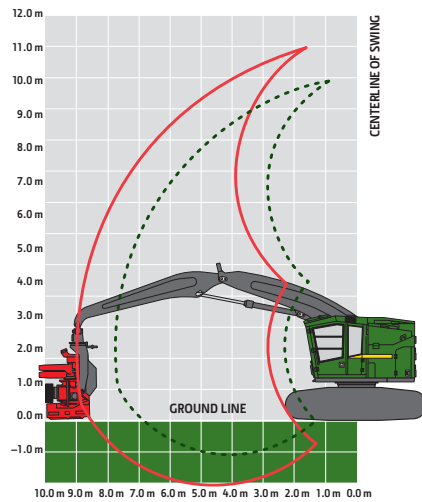
803MH/853MH/859MH

Ground Pressure (SAE J1309, standard machine, less attachment)	803MH	853MH	859MH
Undercarriage	U6 HD	U7 HD	U7L EXD
Double Grouser			
610 mm (24 in.)	57.9 kPa (8.4 psi)	57.6 kPa (8.4 psi)	67.8 kPa (9.8 psi)
762 mm (30 in.)	47.3 kPa (6.9 psi)	47.2 kPa (6.8 psi)	N/A
Single Grouser			
610 mm (24 in.)	57.5 kPa (8.3 psi)	57.5 kPa (8.3 psi)	67.7 kPa (9.8 psi)
711 mm (28 in.)	50.0 kPa (7.3 psi)	50.1 kPa (7.3 psi)	58.8 kPa (8.5 psi)
Triple Grouser (soft terrain only)			
914 mm (36 in.)	40.4 kPa (5.9 psi)	40.3 kPa (5.8 psi)	N/A

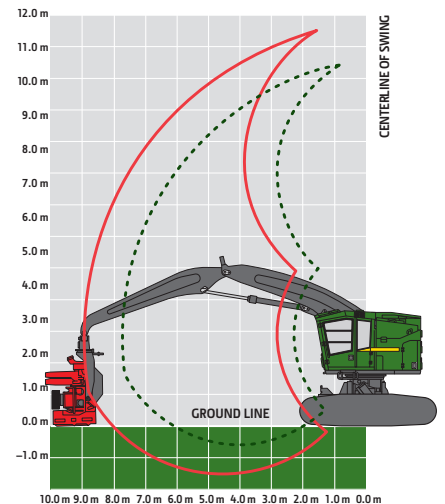
Operating Weight			
Includes standard equipment, 610-mm (24 in.) single-grouser tracks, standard counterweight, half-full fuel tank, and all fluids, less attachment			
Undercarriage	U6 HD	U7 HD	U7L EXD
Approximate Weight — Base Machine	28 150 kg (62,070 lb.)	30 070 kg (66,300 lb.)	35 260 kg (77,750 lb.)

Boom Performance			
8.84-m Boom with RCS			
Maximum Reach (to attachment pin)	8.84 m (29 ft. 0 in.)	8.84 m (29 ft. 0 in.)	8.84 m (29 ft. 0 in.)
Minimum Reach (to attachment pin)	2.71 m (8 ft. 11 in.)	2.71 m (8 ft. 11 in.)	2.71 m (8 ft. 11 in.)
Harvesting Swath	6.13 m (20 ft. 1 in.)	6.13 m (20 ft. 1 in.)	6.13 m (20 ft. 1 in.)
Standard-Lift Option			
Lift Capacity, Bare Pin at Full Reach	4190 kg (9,240 lb.)	4190 kg (9,240 lb.)	4190 kg (9,240 lb.)
Lift Capacity, Bare Pin at 7.62 m (25 ft.)	5850 kg (12,900 lb.)	5850 kg (12,900 lb.)	5850 kg (12,900 lb.)
Lift Capacity, Bare Pin at 6.1 m (20 ft.)	7700 kg (16,980 lb.)	7700 kg (16,980 lb.)	7700 kg (16,980 lb.)
7.75-m Boom with RCS			
Maximum Reach (to attachment pin)	7.75 m (25 ft. 5 in.)	7.75 m (25 ft. 5 in.)	7.75 m (25 ft. 5 in.)
Minimum Reach (to attachment pin)	2.31 m (7 ft. 7 in.)	2.31 m (7 ft. 7 in.)	2.31 m (7 ft. 7 in.)
Harvesting Swath	5.44 m (17 ft. 10 in.)	5.44 m (17 ft. 10 in.)	5.44 m (17 ft. 10 in.)
Standard-Lift Option			
Lift Capacity, Bare Pin at 7.62 m (25 ft.) at Full Reach	5520 kg (12,170 lb.)	5520 kg (12,170 lb.)	5520 kg (12,170 lb.)
Lift Capacity, Bare Pin at 6.1 m (20 ft.)	8350 kg (18,410 lb.)	8350 kg (18,410 lb.)	8350 kg (18,410 lb.)

803MH and 853MH Tracked Harvesters



859M Tracked Harvester



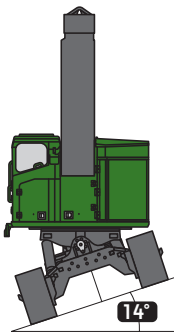
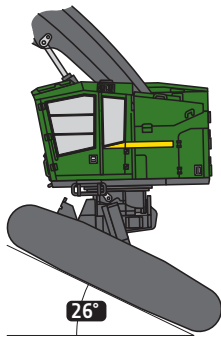
Attachment Information				
Attachment	HTH616C	HTH622B	HTH623C	HTH624C
Models	803MH, 853MH, 859MH	803MH, 853MH, 859MH	803MH, 853MH, 859MH	853MH, 859MH
Maximum Cutting Capacity	550 mm (21.7 in.)	750 mm (29.5 in.)	750 mm (29.5 in.)	810 mm (31.9 in.)
Maximum Delimiting Capacity	510 mm (20.1 in.)	640 mm (25.2 in.)	700 mm (27.6 in.)	760 mm (29.9 in.)
Feeding Mechanism	3 rollers, fully synchronized hydraulic drive		3 rollers, fully synchronized hydraulic drive	
Dimensions				
Maximum Width (arms open)	1600 mm (63.0 in.)	1700 mm (66.9 in.)	2000 mm (78.7 in.)	2000 mm (78.7 in.)
Height (including rotator)	2350 mm (92.5 in.)	2700 mm (106.3 in.)	3000 mm (118.1 in.)	3000 mm (118.1 in.)
Weight (rotator and standard link)	1870 kg (4,120 lb.)	2190 kg (4,830 lb.)	2870 kg (6,330 lb.)	3460 kg (7,630 lb.)
<i>(See individual Harvesting Head brochure for more details.)</i>				

Machine not exactly as shown. Illustrations for dimensioning purposes only. Specifications are subject to change without notice.

803MH/853MH/859MH

Machine Dimensions	803MH	853MH	859MM
Standard Undercarriage	U6 HD	U7 HD	U7L EXD
A Overall Height with 8.84-m Boom			
Top of Cab with Flat Skylight	3.43 m (11 ft. 3 in.)	3.46 m (11 ft. 4 in.)	3.92 m (12 ft. 10 in.)
Top of Cab with Peaked Skylight	3.65 m (12 ft. 0 in.)	3.68 m (12 ft. 1 in.)	4.13 m (13 ft. 7 in.)
Top of Boom, Extended, Attachment Vertical	4.45 m (14 ft. 7 in.)	4.45 m (14 ft. 7 in.)	4.70 m (15 ft. 5 in.)
B Overall Track Length	4.61 m (15 ft. 1 in.)	4.90 m (16 ft. 1 in.)	4.90 m (16 ft. 1 in.)
C Track Length (idler to sprocket center)	3.57 m (11 ft. 9 in.)	3.83 m (12 ft. 7 in.)	3.83 m (12 ft. 7 in.)
D Tail Swing (from swing center)			
Small and Medium Counterweight	1.94 m (6 ft. 4 in.)	1.94 m (6 ft. 4 in.)	1.94 m (6 ft. 4 in.)
Medium and Large Extended Counterweight	2.25 m (7 ft. 4 in.)	2.25 m (7 ft. 4 in.)	2.25 m (7 ft. 4 in.)
E Boom Reach (to attachment pin)			
8.84-m Boom			
Maximum	8.84 m (29 ft. 0 in.)	8.84 m (29 ft. 0 in.)	8.84 m (29 ft. 0 in.)
Minimum	2.71 m (8 ft. 11 in.)	2.71 m (8 ft. 11 in.)	2.71 m (8 ft. 11 in.)
Cutting Swath	6.13 m (20 ft. 1 in.)	6.13 m (20 ft. 1 in.)	6.13 m (20 ft. 1 in.)
7.75-m Boom			
Maximum	7.75 m (25 ft. 5 in.)	7.75 m (25 ft. 5 in.)	7.75 m (25 ft. 5 in.)
Minimum	2.31 m (7 ft. 7 in.)	2.31 m (7 ft. 7 in.)	2.31 m (7 ft. 7 in.)
Cutting Swath	5.44 m (17 ft. 10 in.)	5.44 m (17 ft. 10 in.)	5.44 m (17 ft. 10 in.)
F Ground Clearance			
Single Grouser	744 mm (29 in.)	779 mm (31 in.)	748 mm (29 in.)
Double Grouser	715 mm (28 in.)	756 mm (30 in.)	725 mm (29 in.)
Triple Grouser	700 mm (28 in.)	738 mm (29 in.)	N/A
G Upperstructure Width			
Standard	3.15 m (10 ft. 4 in.)	3.15 m (10 ft. 4 in.)	3.15 m (10 ft. 4 in.)
With Optional Walkway	3.36 m (11 ft. 0 in.)	3.36 m (11 ft. 0 in.)	3.36 m (11 ft. 0 in.)
H Track Gauge	2.67 m (8 ft. 9 in.)	2.69 m (8 ft. 10 in.)	2.72 m (8 ft. 11 in.)
I Width Over Tracks			
610-mm (24 in.) Track Shoes	3.28 m (10 ft. 9 in.)	3.30 m (10 ft. 10 in.)	3.33 m (10 ft. 11 in.)
711-mm (28 in.) Track Shoes	3.38 m (11 ft. 1 in.)	3.40 m (11 ft. 2 in.)	3.43 m (11 ft. 3 in.)
760-mm (30 in.) Track Shoes	3.43 m (11 ft. 3 in.)	3.45 m (11 ft. 4 in.)	N/A
914-mm (36 in.) Track Shoes	3.58 m (11 ft. 9 in.)	3.61 m (11 ft. 10 in.)	N/A

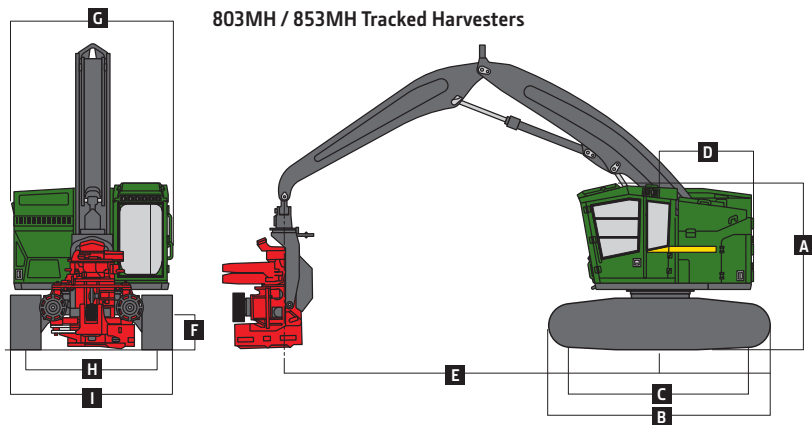
859MH Leveling



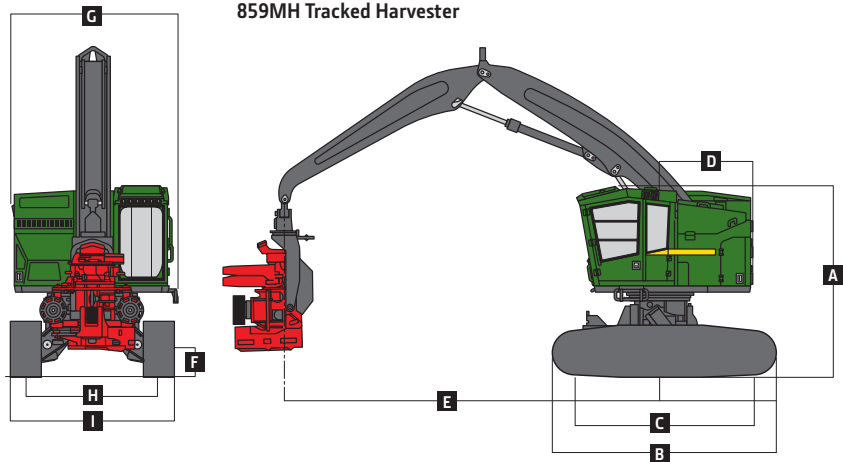
859MH Undercarriage-Leveling Mechanism


Forward	26 deg.
Side to Side	14 deg.
Rearward	7 deg.

803MH / 853MH Tracked Harvesters



859MH Tracked Harvester





Logging is a way of life. A calling passed down through the generations. One that gets into your blood and takes everything you've got. But one that you'll never give up. And that's why we're dedicated to providing equipment and solutions specifically for the work you do. **Combine our technology with your work ethic to get the job done.**

We're for Loggers



JOHN DEERE