

670G LC

Engine	670G LC		
Manufacturer and Model	Isuzu 6WG1-iT4		
Non-Road Emissions Standard	EPA Interim Tier 4/EU Stage IIIB		
Net Rated Power (ISO 9249)	345 kW (463 hp) at 1,800 rpm		
Cylinders	6		
Displacement	15.7 L (957 cu. in.)		
Off-Level Capacity	70% (35 deg.)		
Aspiration	Turbocharged, air-to-air charge-air cooler		
Cooling			
2 cool-on-demand hydraulic-driven, suction-type fans with remote-mounted drives			
Powertrain			
2-speed propel with Autoshift			
Maximum Travel Speed			
Low	3.6 km/h (2.2 mph)		
High	5.2 km/h (3.2 mph)		
Drawbar Pull	46 115 kg (101,666 lb.)		
Hydraulics			
Open center, load sensing			
Main Pumps	2 variable-displacement pumps		
Maximum Rated Flow	489 L/m (129 gpm) x 2		
Pilot Pump	One gear		
Maximum Rated Flow	30 L/m (7.9 gpm)		
Pressure Setting	3900 kPa (566 psi)		
System Operating Pressure			
Circuits			
Implement	31 900 kPa (4,627 psi)		
Travel	34 300 kPa (4,975 psi)		
Swing	29 400 kPa (4,264 psi)		
Power Boost	34 300 kPa (4,975 psi)		
Controls	Pilot levers, short stroke, low-effort hydraulic pilot controls with shutoff lever		
Cylinders			
Heat-treated, chrome-plated, polished cylinder rods; hardened steel (replaceable bushings) pivot pins			
	<i>Bore</i>	<i>Rod Diameter</i>	<i>Stroke</i>
Boom (2)	191 mm (7.5 in.)	130 mm (5.1 in.)	1806 mm (71 in.)
Arm (1)	201 mm (7.9 in.)	140 mm (5.5 in.)	2164 mm (85 in.)
Bucket (1)	180 mm (7.1 in.)	130 mm (5.1 in.)	1555 mm (61 in.)
Electrical			
Number of Batteries (12 volt)	2		
Battery Capacity	500 CCA		
Alternator Rating	50 amp		
Work Lights	5 halogen (one mounted on frame, 2 mounted on boom, and 2 mounted on top of cab)		
Undercarriage			
Rollers (each side)			
Carrier	3		
Track	8		
Shoes, Double-Bar Grousers (each side)	47		
Track			
Adjustment	Hydraulic		
Guides	Front and center		
Chain	Sealed and lubricated		
Ground Pressure			
Double-Bar Grouser Shoes			
650 mm (26 in.)	93.8 kPa (13.6 psi)		
750 mm (30 in.)	82.7 kPa (12.0 psi)		
900 mm (36 in.)	69.6 kPa (10.1 psi)		



Swing Mechanism 670G LC

Speed	9.1 rpm
Torque	194 000 Nm (143,087 lb.-ft.)

Serviceability

Refill Capacities

Fuel Tank	900 L (238 gal.)
Cooling System	70 L (18.5 gal.)
Engine Oil with Filter	57 L (15.1 gal.)
Hydraulic Tank	380 L (100.4 gal.)
Hydraulic System	750 L (198.1 gal.)
Gearbox	
Swing (each)	10.5 L (11.1 qt.)
Travel (each)	16 L (16.9 qt.)
Pump Drive	6.2 L (6.6 qt.)

Operating Weights

With full fuel tank; 79-kg (175 lb.) operator; 3.09-m³ (4.04 cu. yd.), 1370-mm (54 in.), 3126-kg (6,892 lb.) bucket; 4.2-m (13 ft. 9 in.) arm; 10 400-kg (22,928 lb.) counterweight; and 900-mm (36 in.) double-bar grouser shoes

SAE Operating Weight	71 688 kg (158,045 lb.)
----------------------	-------------------------

Component Weights

Undercarriage with Double-Bar Grouser Shoes

650 mm (26 in.)	26 620 kg (58,687 lb.)
750 mm (30 in.)	27 240 kg (60,054 lb.)
900 mm (36 in.)	28 180 kg (62,126 lb.)

One-Piece Boom (with arm cylinder)

7.8 m (25 ft. 7 in.)	6550 kg (14,440 lb.)
6.8-m (22 ft. 4 in.) Mass Excavating	6110 kg (13,470 lb.)

Arm with Bucket Cylinder and Linkage

3.6 m (11 ft. 10 in.)	3620 kg (7,981 lb.)
4.2 m (13 ft. 9 in.)	3930 kg (8,664 lb.)
5.3 m (17 ft. 5 in.)	3620 kg (7,981 lb.)
2.9-m (9 ft. 6 in.) Mass Excavating	3820 kg (8,422 lb.)

Boom-Lift Cylinders (2), Total Weight

3.09-m ³ (4.04 cu. yd.), 1370-mm (54 in.)	3126 kg (6,892 lb.)
--	---------------------

Heavy-Duty High-Capacity Bucket

Counterweight, Standard	10 400 kg (22,928 lb.)
-------------------------	------------------------

Operating Dimensions

Arm Length	3.6 m (11 ft. 10 in.) w/ 7.8-m (25 ft. 7 in.) Boom	4.2 m (13 ft. 9 in.) w/ 7.8-m (25 ft. 7 in.) Boom	5.3 m (17 ft. 5 in.) w/ 7.8-m (25 ft. 7 in.) Boom	2.9-m (9 ft. 6 in.) Mass Excavating w/ 6.8-m (22 ft. 4 in.) Mass-Excavating Boom
-------------------	--	---	---	--

Arm Digging Force				
SAE	247 kN (55,528 lb.)	224 kN (50,357 lb.)	192 kN (43,163 lb.)	297 kN (66,768 lb.)
ISO	255 kN (57,326 lb.)	231 kN (51,931 lb.)	196 kN (44,063 lb.)	306 kN (68,792 lb.)

Bucket Digging Force				
SAE	290 kN (65,195 lb.)	290 kN (65,195 lb.)	245 kN (55,078 lb.)	332 kN (74,637 lb.)
ISO	324 kN (72,838 lb.)	324 kN (72,838 lb.)	277 kN (62,272 lb.)	369 kN (82,954 lb.)

Lifting Capacity Over Front at Ground Level				
9.0-m (30 ft.) Reach (with power boost)	15 211 kg (32,695 lb.)	15 300 kg (32,900 lb.)	15 522 kg (33,628 lb.)	15 190 kg (32,649 lb.)

A	Maximum Reach	13.25 m (43 ft. 6 in.)	13.85 m (45 ft. 5 in.)	14.74 m (48 ft. 4 in.)	11.81 m (38 ft. 9 in.)
A'	Maximum Reach at Ground Level	13.00 m (42 ft. 8 in.)	13.61 m (44 ft. 8 in.)	14.51 m (47 ft. 7 in.)	11.50 m (37 ft. 9 in.)
B	Maximum Digging Depth	8.53 m (28 ft. 0 in.)	9.15 m (30 ft. 0 in.)	10.03 m (32 ft. 11 in.)	7.12 m (23 ft. 4 in.)

B'	Maximum Digging Depth at 2.44-m (8 ft. 0 in.) Flat Bottom	8.40 m (27 ft. 7 in.)	9.03 m (29 ft. 8 in.)	9.92 m (32 ft. 7 in.)	6.97 m (22 ft. 10 in.)
-----------	---	-----------------------	-----------------------	-----------------------	------------------------

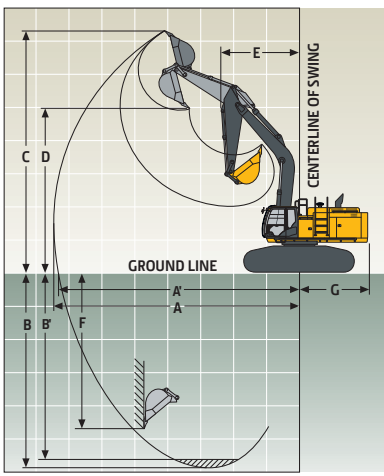
C	Maximum Cutting Height	11.92 m (39 ft. 1 in.)	12.24 m (40 ft. 2 in.)	12.65 m (41 ft. 6 in.)	11.90 m (39 ft. 1 in.)
----------	------------------------	------------------------	------------------------	------------------------	------------------------

D	Maximum Dumping Height	8.05 m (26 ft. 5 in.)	8.33 m (27 ft. 4 in.)	9.17 m (30 ft. 1 in.)	7.33 m (24 ft. 1 in.)
----------	------------------------	-----------------------	-----------------------	-----------------------	-----------------------

E	Minimum Swing Radius	5.78 m (19 ft. 0 in.)	5.76 m (18 ft. 11 in.)	5.60 m (18 ft. 4 in.)	5.24 m (17 ft. 2 in.)
----------	----------------------	-----------------------	------------------------	-----------------------	-----------------------

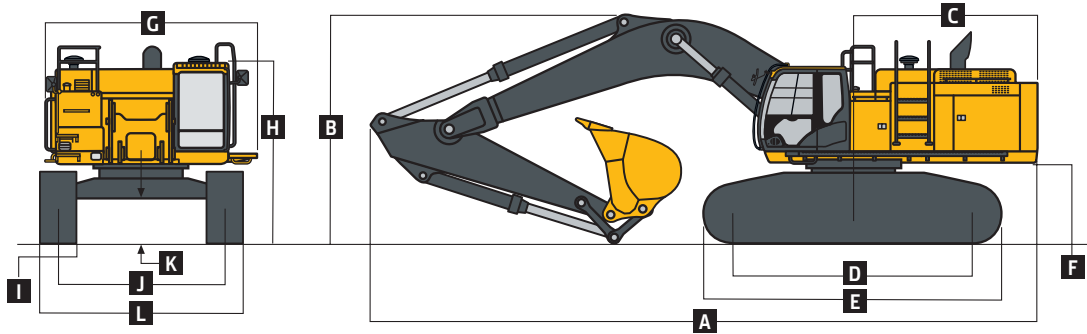
F	Maximum Vertical Wall	7.38 m (24 ft. 3 in.)	8.18 m (26 ft. 10 in.)	9.53 m (31 ft. 3 in.)	5.28 m (17 ft. 4 in.)
----------	-----------------------	-----------------------	------------------------	-----------------------	-----------------------

G	Tail-Swing Radius	4.02 m (13 ft. 2 in.)	4.02 m (13 ft. 2 in.)	4.02 m (13 ft. 2 in.)	4.02 m (13 ft. 2 in.)
----------	-------------------	-----------------------	-----------------------	-----------------------	-----------------------



Machine Dimensions 670G LC

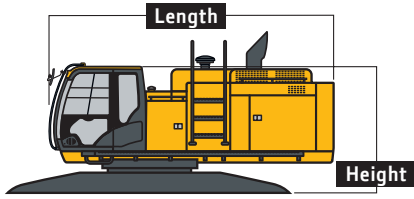
A Overall Length with Arm	
3.6 m (11 ft. 10 in.)	13.40 m (44 ft. 0 in.)
4.2 m (13 ft. 9 in.)	13.40 m (44 ft. 0 in.)
5.3 m (17 ft. 5 in.)	13.06 m (42 ft. 10 in.)
2.9-m (9 ft. 6 in.) Mass Excavating with Mass-Excavating Boom	12.42 m (40 ft. 9 in.)
B Overall Height with Arm	
3.6 m (11 ft. 10 in.)	4.46 m (14 ft. 8 in.)
4.2 m (13 ft. 9 in.)	4.98 m (16 ft. 4 in.)
5.3 m (17 ft. 5 in.)	5.28 m (17 ft. 4 in.)
2.9-m (9 ft. 6 in.) Mass Excavating with Mass-Excavating Boom	4.96 m (16 ft. 3 in.)
C Rear-End Length/Swing Radius	3.91 m (12 ft. 10 in.)
D Distance Between Idler/Sprocket Centerline	4.60 m (15 ft. 1 in.)
E Undercarriage Length	5.84 m (19 ft. 2 in.)
F Counterweight Clearance	1.53 m (5 ft. 0 in.)
G Upperstructure Width	4.09 m (13 ft. 5 in.)
H Cab Height	3.66 m (11 ft. 4 in.)
I Track Width with Double-Bar Grouser Shoes	650 mm (26 in.) / 750 mm (30 in.) / 900 mm (36 in.)
J Gauge Width	
Operating Position	3.30 m (10 ft. 10 in.)
Transport Position	2.82 m (9 ft. 3 in.)
K Ground Clearance	0.86 m (34 in.)
L Overall Width with 900-mm (36 in.) Double-Bar Grouser Shoes	
Operating Position	4.19 m (13 ft. 9 in.)
Transport Position	3.73 m (12 ft. 3 in.)


Packing Dimensions and Weights For Transportation

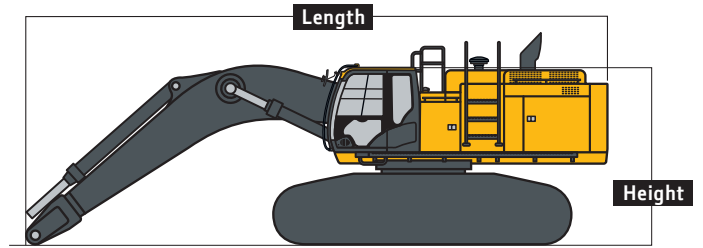
	Length	Height	Overall Width	Weight
Base Machine (without front attachment and side frame)*	5.22 m (17 ft. 2 in.)	3.32 m (10 ft. 11 in.)	3.39 m (11 ft. 1 in.)	20 100 kg (44,313 lb.)
Side Frame**				
650-mm (26 in.) Shoe Width	5.84 m (19 ft. 2 in.)	1.45 m (4 ft. 9 in.)	1.19 m (3 ft. 11 in.)	10 300 kg (22,708 lb.)
750-mm (30 in.) Shoe Width	5.84 m (19 ft. 2 in.)	1.45 m (4 ft. 9 in.)	1.24 m (4 ft. 1 in.)	10 600 kg (23,369 lb.)
900-mm (36 in.) Shoe Width	5.84 m (19 ft. 2 in.)	1.45 m (4 ft. 9 in.)	1.32 m (4 ft. 4 in.)	11 100 kg (24,471 lb.)
Counterweight, Standard	3.36 m (11 ft. 0 in.)	1.55 m (5 ft. 1 in.)	0.59 m (23 in.)	11 100 kg (24,471 lb.)
Boom				
6.8 m (22 ft. 4 in.)	7.14 m (23 ft. 5 in.)	2.51 m (8 ft. 3 in.)	1.39 m (4 ft. 7 in.)	6110 kg (13,470 lb.)
7.8 m (25 ft. 7 in.)	8.13 m (26 ft. 8 in.)	2.33 m (7 ft. 8 in.)	1.39 m (4 ft. 7 in.)	6550 kg (14,440 lb.)
Arm				
2.9 m (9 ft. 6 in.)	4.37 m (14 ft. 4 in.)	1.69 m (5 ft. 7 in.)	0.80 m (31 in.)	3620 kg (7,981 lb.)
3.6 m (11 ft. 10 in.)	5.11 m (16 ft. 9 in.)	1.44 m (4 ft. 9 in.)	0.80 m (31 in.)	3620 kg (7,981 lb.)
4.2 m (13 ft. 9 in.)	5.71 m (18 ft. 9 in.)	1.39 m (4 ft. 7 in.)	0.80 m (31 in.)	3930 kg (8,664 lb.)
5.3 m (17 ft. 1 in.)	6.73 m (22 ft. 1 in.)	1.26 m (4 ft. 2 in.)	0.80 m (31 in.)	3620 kg (7,981 lb.)
Less Arm and Counterweight	6.24 m (20 ft. 6 in.)	4.23 m (13 ft. 11 in.) / 3.76 m (12 ft. 4 in.) without exhaust stack	3.48 m (11 ft. 5 in.) with 650-mm (26 in.) shoes / 3.58 m (11 ft. 9 in.) with 750-mm (30 in.) shoes	42 900 kg (94,578 lb.) with 650-mm (26 in.) shoes / 43 300 kg (95,460 lb.) with 750-mm (30 in.) shoes

*Steps on the track frame and the side hydraulic oil tank, handrails on the upper battery box, upper fuel tank, and the side hydraulic oil tank must be removed to comply with the overall width dimensions above.

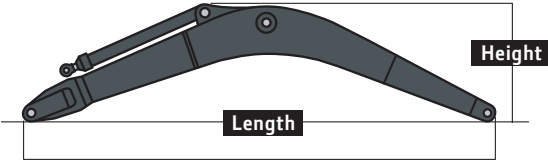
**The dimensions and the weights indicate those of one side frame.



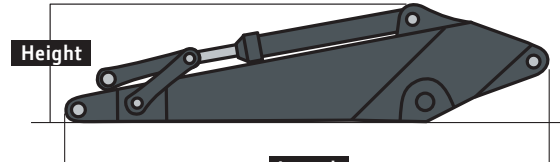
Base Machine



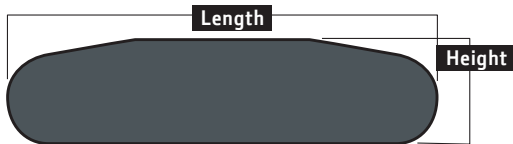
Less Counterweight and Arm



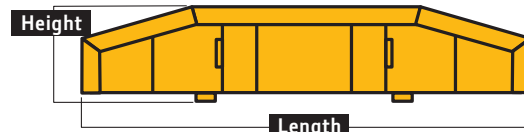
Boom



Arm



Side Frame



Counterweight

Lift Capacities

Boldface type indicates hydraulically limited capacity; lightface type indicates stability-limited capacities, in kg (lb.). Ratings at bucket lift hook; machine equipped with standard gauge and situated on firm, uniform supporting surface. Total load includes weight of cables, hook, etc. Figures do not exceed 87 percent of hydraulic capacities or 75 percent of weight needed to tip machine. All lift capacities are based on ISO 10567 (with power boost).

Load Point Height	3.0 m (10 ft.)		4.5 m (15 ft.)		6.0 m (20 ft.)		7.5 m (25 ft.)		9.0 m (30 ft.)		10.5 m (35 ft.)	
	Over Front	Over Side	Over Front	Over Side	Over Front	Over Side	Over Front	Over Side	Over Front	Over Side	Over Front	Over Side

With 2.5-m³ (3.3 cu. yd.) bucket, 4.2-m (13 ft. 9 in.) arm, 7.8-m (25 ft. 7 in.) boom, and 650-mm (26 in.) double-bar grouser shoes

7.5 m (25 ft.)									10 877 (23,789)	10 877 (23,789)		
6.0 m (20 ft.)									11 695 (25,455)	11 695 (25,455)	10 074 (20,249)	8822 (18,828)
4.5 m (15 ft.)					18 419 (39,595)	18 419 (39,595)	14 846 (32,081)	14 846 (32,081)	12 770 (27,710)	11 434 (24,562)	11 489 (25,022)	8600 (18,394)
3.0 m (10 ft.)					21 775 (46,868)	21 060 (45,389)	16 786 (36,258)	14 767 (31,793)	13 935 (30,192)	10 914 (23,454)	12 146 (26,076)	8297 (17,780)
1.5 m (5 ft.)					24 280 (52,394)	19 840 (42,717)	18 421 (39,817)	14 015 (30,161)	14 970 (32,415)	10 443 (22,442)	11 847 (25,435)	8011 (17,176)
Ground Line			14 147 (32,798)	14 147 (32,798)	25 552 (55,264)	19 118 (41,112)	19 474 (42,128)	13 480 (28,992)	14 937 (32,099)	10 081 (21,662)	11 611 (24,941)	7789 (16,710)
-1.5 m (-5 ft.)	10 795 (24,434)	10 795 (24,434)	19 888 (45,601)	19 888 (45,601)	25 665 (55,570)	18 795 (40,387)	19 742 (42,409)	13 178 (28,333)	14 702 (31,598)	9864 (21,196)	11 488 (24,701)	7673 (16,485)
-3.0 m (-10 ft.)	17 778 (40,167)	17 778 (40,167)	27 898 (63,882)	27 898 (63,882)	24 708 (53,469)	18 764 (40,316)	19 274 (41,640)	13 097 (28,162)	14 647 (31,502)	9813 (21,107)		
-4.5 m (-15 ft.)	26 090 (59,144)	26 090 (59,144)	29 339 (63,392)	29 339 (63,392)	22 538 (48,598)	18 985 (40,816)	17 625 (37,853)	13 238 (28,498)	13 567 (28,680)	9987 (21,554)		
-6.0 m (-20 ft.)			23 967 (51,241)	23 967 (51,241)	18 551 (39,462)	18 551 (39,462)	13 914 (28,969)	13 697 (28,969)				

Lift Capacities (continued) 670G LC

Boldface type indicates hydraulically limited capacity; **lightface type** indicates stability-limited capacities, in kg (lb.). Ratings at bucket lift hook; machine equipped with standard gauge and situated on firm, uniform supporting surface. Total load includes weight of cables, hook, etc. Figures do not exceed 87 percent of hydraulic capacities or 75 percent of weight needed to tip machine. All lift capacities are based on ISO 10567 (with power boost).

Load Point Height	3.0 m (10 ft.)		4.5 m (15 ft.)		6.0 m (20 ft.)		7.5 m (25 ft.)		9.0 m (30 ft.)		10.5 m (35 ft.)	
Horizontal Distance from Centerline of Rotation	Over Front	Over Side	Over Front	Over Side	Over Front	Over Side	Over Front	Over Side	Over Front	Over Side	Over Front	Over Side

With 3.5-m³ (4.6 cu. yd.) bucket, 2.9-m (9 ft. 6 in.) BE arm, 6.8-m (22 ft. 4 in.) BE boom, and 650-mm (26 in.) double-bar grouser shoes

7.5 m (25 ft.)							14 395	14 395				
							(31,612)	(31,612)				
6.0 m (20 ft.)			17 527	17 527	15 276	15 276						
			(37,885)	(37,885)	(33,224)	(33,224)						
4.5 m (15 ft.)			20 472	20 472	16 699	15 012	14 652	10 731				
			(44,111)	(44,111)	(36,197)	(32,260)	(31,942)	(22,921)				
3.0 m (10 ft.)			23 433	20 710	18 261	14 337	15 341	10 437				
			(50,516)	(44,580)	(39,522)	(30,822)	(32,915)	(22,377)				
1.5 m (5 ft.)			25 431	19 776	19 475	13 778	15 019	10 138				
			(54,940)	(42,529)	(42,140)	(29,614)	(32,245)	(21,754)				
Ground Line			26 021	19 288	19 945	13 427	14 832	9965				
			(56,317)	(41,441)	(43,040)	(28,854)	(31,876)	(21,412)				
-1.5 m (-5 ft.)			33 521	31 688	25 148	19 170	19 302	13 325				
			(72,778)	(67,856)	(54,427)	(41,173)	(41,640)	(28,645)				
-3.0 m (-10 ft.)	34 294	34 294	29 559	29 559	22 510	19 382	16 667	13 551				
	(77,983)	(77,983)	(63,977)	(63,977)	(48,496)	(41,653)	(35,284)	(29,217)				
-4.5 m (-15 ft.)			22 634	22 634	16 493	16 493						
			(48,277)	(48,277)	(34,298)	(34,298)						

With 2.5-m³ (3.3 cu. yd.) bucket, 4.2-m (13 ft. 9 in.) arm, 7.8-m (25 ft. 7 in.) boom, and 750-mm (30 in.) double-bar grouser shoes

7.5 m (25 ft.)							10 877	10 877				
							(23,789)	(23,789)				
6.0 m (20 ft.)							11 695	11 695	10 074	8879		
							(25,455)	(25,455)	(20,249)	(18,952)		
4.5 m (15 ft.)			18 419	18 419	14 846	14 846	12 770	11 503	11 489	8657		
			(39,595)	(39,595)	(32,081)	(32,081)	(27,710)	(24,712)	(25,022)	(18,518)		
3.0 m (10 ft.)			21 775	21 178	16 786	14 854	13 935	10 983	12 146	8354		
			(46,868)	(45,643)	(36,258)	(31,981)	(30,192)	(23,603)	(26,249)	(17,903)		
1.5 m (5 ft.)			24 280	19 958	18 421	14 102	14 970	10 512	11 927	8068		
			(52,394)	(42,971)	(39,817)	(30,349)	(32,415)	(22,591)	(25,608)	(17,300)		
Ground Line			14 147	14 147	25 552	19 236	19 474	13 567	15 035	10 150	11 691	7846
			(32,798)	(32,798)	(55,264)	(41,112)	(42,128)	(28,992)	(32,311)	(21,662)	(25,114)	(16,710)
-1.5 m (-5 ft.)	10 795	10 795	19 888	19 888	25 665	18 912	19 798	13 265	14 800	9933	11 568	7730
	(24,434)	(24,434)	(45,601)	(45,601)	(55,570)	(40,642)	(42,681)	(28,521)	(31,810)	(21,346)	(24,874)	(16,608)
-3.0 m (-10 ft.)	17 778	17 778	27 898	27 898	24 708	18 882	19 274	13 184	14 745	9882		
	(40,167)	(40,167)	(63,882)	(63,882)	(53,469)	(40,570)	(41,640)	(28,350)	(31,713)	(21,256)		
-4.5 m (-15 ft.)	26 090	26 090	29 339	29 339	22 538	19 103	17 625	13 325	13 567	10 056		
	(59,144)	(59,144)	(63,392)	(63,392)	(48,598)	(41,070)	(37,853)	(28,686)	(28,680)	(21,703)		
-6.0 m (-20 ft.)			23 967	23 967	18 551	18 551	13 914	13 784				
			(51,241)	(51,241)	(39,462)	(39,462)	(28,969)	(28,969)				

With 2.9-m³ (3.8 cu. yd.) bucket, 3.6-m (11 ft. 10 in.) arm, 7.8-m (25 ft. 7 in.) boom, and 900-mm (36 in.) double-bar grouser shoes

7.5 m (25 ft.)							11 737	11 737				
							(25,696)	(25,696)				
6.0 m (20 ft.)							13 984	13 984	12 459	11 908		
							(30,277)	(30,277)	(27,118)	(25,550)		
4.5 m (15 ft.)			19 903	19 903	15 769	15 613	13 440	11 455	12 043	8611		
			(42,762)	(42,762)	(34,065)	(33,620)	(29,162)	(24,611)	(23,250)	(18,398)		
3.0 m (10 ft.)			23 023	20 966	17 563	14 793	14 488	10 978	12 293	8368		
			(49,548)	(45,200)	(37,932)	(31,856)	(31,388)	(23,595)	(26,380)	(17,930)		
1.5 m (5 ft.)			25 061	19 939	18 974	14 126	15 369	10 560	12 038	8128		
			(54,098)	(42,929)	(41,012)	(30,405)	(33,275)	(22,698)	(25,851)	(17,432)		
Ground Line			12 940	12 940	25 788	19 410	19 740	13 687	15 211	10 260	11 861	7961
			(30,246)	(30,246)	(55,807)	(41,737)	(42,704)	(29,442)	(32,695)	(22,052)	(25,491)	(17,093)
-1.5 m (-5 ft.)			21 022	21 022	25 394	19 236	19 730	13 479	15 050	10 111		
			(48,226)	(48,226)	(55,010)	(41,334)	(42,682)	(28,984)	(32,358)	(21,738)		
-3.0 m (-10 ft.)	20 323	20 323	31 007	31 007	23 941	19 319	18 793	13 487	14 834	10 147		
	(45,939)	(45,939)	(67,288)	(67,288)	(51,811)	(41,514)	(40,564)	(29,012)	(31,798)	(21,850)		
-4.5 m (-15 ft.)	30 660	30 660	27 015	27 015	21 158	19 649	16 490	13 739				
	(69,671)	(69,671)	(58,346)	(58,346)	(45,545)	(42,258)	(35,230)	(29,603)				
-6.0 m (-20 ft.)			20 645	20 645	16 030	16 030						
			(43,853)	(43,853)	(33,647)	(33,647)						

Lift Capacities (continued) 670G LC

Boldface type indicates hydraulically limited capacity; lightface type indicates stability-limited capacities, in kg (lb.). Ratings at bucket lift hook; machine equipped with standard gauge and situated on firm, uniform supporting surface. Total load includes weight of cables, hook, etc. Figures do not exceed 87 percent of hydraulic capacities or 75 percent of weight needed to tip machine. All lift capacities are based on ISO 10567 (with power boost).

Load Point Height	3.0 m (10 ft.)		4.5 m (15 ft.)		6.0 m (20 ft.)		7.5 m (25 ft.)		9.0 m (30 ft.)		10.5 m (35 ft.)	
	Over Front	Over Side	Over Front	Over Side	Over Front	Over Side	Over Front	Over Side	Over Front	Over Side	Over Front	Over Side

With 2.5-m³ (3.3 cu. yd.) bucket, 4.2-m (13 ft. 9 in.) arm, 7.8-m (25 ft. 7 in.) boom, and 900-mm (36 in.) double-bar grouser shoes

7.5 m (25 ft.)									10 880	10 880		
									(23,800)	(23,800)		
6.0 m (20 ft.)									11 700	11 700	10 070	9030
									(25,500)	(25,500)	(20,300)	(19,300)
4.5 m (15 ft.)					18 420	18 420	14 850	14 850	12 770	11 690	11 490	8810
					(39,600)	(39,600)	(32,100)	(32,100)	(27,700)	(25,100)	(22,500)	(18,900)
3.0 m (10 ft.)					21 780	21 500	16 790	15 090	13 940	11 170	12 150	8510
					(46,900)	(46,300)	(36,300)	(32,500)	(30,200)	(24,000)	(26,400)	(18,200)
1.5 m (5 ft.)					24 280	20 280	18 420	14 340	14 970	10 700	12 140	8220
					(52,400)	(43,700)	(39,800)	(30,900)	(32,400)	(23,000)	(26,100)	(17,600)
Ground Line			14 150	14 150	25 550	19 560	19 470	13 800	15 300	10 340	11 900	8000
			(32,800)	(32,800)	(55,300)	(42,100)	(42,100)	(29,700)	(32,900)	(22,200)	(25,600)	(17,200)
-1.5 m (-5 ft.)	10 800	10 800	19 890	19 890	25 670	19 230	19 800	13 500	15 060	10 120	11 780	7890
	(24,400)	(24,400)	(45,600)	(45,600)	(55,600)	(41,300)	(42,800)	(29,000)	(32,400)	(21,800)	(25,300)	(16,900)
-3.0 m (-10 ft.)	17 780	17 780	27 900	27 900	24 710	19 200	19 270	13 420	15 010	10 070		
	(40,200)	(40,200)	(63,900)	(63,900)	(53,500)	(41,300)	(41,600)	(28,900)	(32,300)	(21,700)		
-4.5 m (-15 ft.)	26 090	26 090	29 340	29 340	22 540	19 420	17 630	13 560	13 570	10 240		
	(59,100)	(59,100)	(63,400)	(63,400)	(48,600)	(41,800)	(37,900)	(29,200)	(28,700)	(22,100)		
-6.0 m (-20 ft.)			23 970	23 970	18 550	18 550	13 910	13 910				
			(51,200)	(51,200)	(39,500)	(39,500)	(29,000)	(29,000)				

With 2.0-m³ (2.6 cu. yd.) bucket, 5.3-m (17 ft. 5 in.) arm, 7.8-m (25 ft. 7 in.) boom, and 900-mm (36 in.) double-bar grouser shoes

9.0 m (30 ft.)											6009	6009
											(11,573)	(11,573)
7.5 m (25 ft.)											7633	7633
											(16,037)	(16,037)
6.0 m (20 ft.)									9950	9950	8901	8901
									(21,588)	(21,588)	(18,979)	(18,979)
4.5 m (15 ft.)							13 443	13 443	11 864	11 864	10 429	9496
							(29,087)	(29,087)	(25,768)	(25,768)	(22,249)	(20,365)
3.0 m (10 ft.)			27 858	27 858	19 701	19 701	15 613	15 613	13 211	11 922	11 668	9138
			(59,723)	(59,723)	(42,441)	(42,441)	(33,756)	(33,756)	(28,648)	(25,636)	(25,370)	(19,608)
1.5 m (5 ft.)			17 982	17 982	22 902	21 457	17 611	15 185	14 493	11 368	12 479	8786
			(42,685)	(42,685)	(49,431)	(46,208)	(38,090)	(32,691)	(31,408)	(24,446)	(27,092)	(18,859)
Ground Line			16 168	16 168	25 049	20 401	19 134	14 486	15 522	10 905	12 398	8485
			(37,320)	(37,320)	(54,167)	(43,894)	(41,411)	(31,172)	(33,628)	(23,447)	(26,642)	(18,217)
-1.5 m (-5 ft.)	10 052	10 052	18 748	18 748	26 037	19 791	20 004	14 018	15 526	10 574	12 169	8269
	(22,701)	(22,701)	(42,960)	(42,960)	(56,367)	(42,552)	(43,307)	(30,154)	(33,379)	(22,735)	(26,160)	(17,762)
-3.0 m (-10 ft.)	14 711	14 711	23 606	23 606	25 938	19 532	20 117	13 777	15 333	10 396	12 064	8170
	(33,198)	(33,198)	(53,968)	(53,968)	(56,149)	(41,985)	(43,523)	(29,635)	(32,975)	(22,359)	(25,958)	(17,572)
-4.5 m (-15 ft.)	20 335	20 335	30 826	30 826	24 730	19 554	19 330	13 751	15 326	10 389		
	(46,013)	(46,013)	(70,608)	(68,371)	(53,432)	(42,044)	(41,701)	(29,595)	(32,988)	(22,372)		
-6.0 m (-20 ft.)	27 672	27 672	29 088	29 088	22 149	19 843	17 275	13 957	13 248	10 618		
	(62,903)	(62,903)	(62,555)	(62,555)	(47,558)	(42,706)	(36,921)	(30,084)	(27,798)	(22,951)		
-7.5 m (-25 ft.)			22 773	22 773	17 355	17 355						
			(48,117)	(48,117)	(36,413)	(36,413)						

With 3.5-m³ (4.6 cu. yd.) bucket, 2.9-m (9 ft. 6 in.) BE arm, 6.8-m (22 ft. 4 in.) BE boom, and 900-mm (36 in.) double-bar grouser shoes

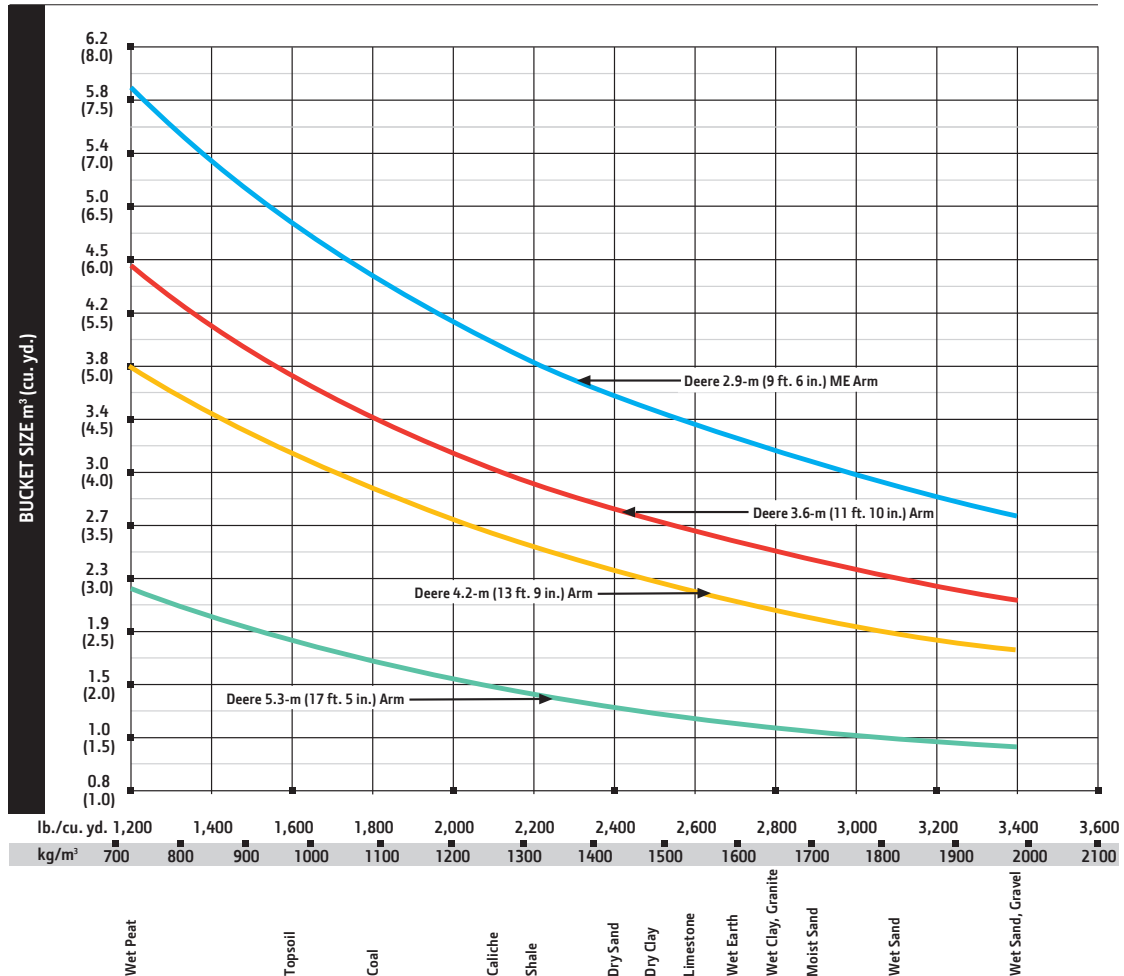
7.5 m (25 ft.)							14 395	14 395				
							(31,612)	(31,612)				
6.0 m (20 ft.)					17 527	17 527	15 276	15 276				
					(37,885)	(37,885)	(33,224)	(33,224)				
4.5 m (15 ft.)					20 472	20 472	16 699	15 334	14 652	10 986		
					(44,111)	(44,111)	(36,197)	(32,957)	(31,942)	(23,474)		
3.0 m (10 ft.)					23 433	21 147	18 261	14 660	15 368	10 693		
					(50,516)	(45,523)	(39,522)	(31,520)	(33,393)	(22,931)		
1.5 m (5 ft.)					25 431	20 214	19 475	14 101	15 377	10 394		
					(54,940)	(43,472)	(42,140)	(30,312)	(33,018)	(22,308)		
Ground Line					26 021	19 726	19 945	13 750	15 190	10 220		
					(56,317)	(42,385)	(43,144)	(29,551)	(32,649)	(21,965)		
-1.5 m (-5 ft.)			33 521	32 367	25 148	19 608	19 302	13 648				
			(72,778)	(69,314)	(54,427)	(42,117)	(41,640)	(29,342)				
-3.0 m (-10 ft.)	34 294	34 294	29 559	29 559	22 510	19 819	16 667	13 874				
	(77,983)	(77,983)	(63,977)	(63,977)	(48,496)	(42,597)	(35,284)	(29,914)				
-4.5 m (-15 ft.)			22 634	22 634	16 493	16 493						
			(48,277)	(48,277)	(34,298)	(34,298)						

Buckets 670G LC

A full line of buckets is offered to meet a wide variety of applications. Digging forces are with power boost. Tooth selection includes the John Deere Fanggs™ Standard, Tiger, Twin Tiger, Abrasion panel, or Flare tooth. Replaceable cutting edges and a variety of teeth are available through John Deere Parts. Optional side cutters add 150 mm (6 in.) to bucket widths. Capacities are SAE heaped ratings.

Type Bucket	Bucket Width		Bucket Capacity		Bucket Weight		Bucket Dig Force (SAE)		Bucket Dig Force (ISO)		Arm Dig Force 3.6 m (11 ft. 10 in.) (SAE)		Arm Dig Force 3.6 m (11 ft. 10 in.) (ISO)	
	mm	in.	m ³	cu. yd.	kg	lb.	kN	lb.	kN	lb.	kN	lb.	kN	lb.
Extreme Duty Plate Lip	1219	48	2.65	3.5	3396	7,487	275	61,851	307	69,102	242	54,423	250	56,186
Extreme Duty Plate Lip	1370	54	3.06	4.0	3546	7,817	275	61,851	307	69,102	242	54,423	250	56,186
Extreme Duty Plate Lip	1524	60	3.53	4.6	3795	8,368	275	61,851	307	69,102	242	54,423	250	56,186
Heavy Duty High Capacity	914	36	1.80	2.4	2664	5,873	275	61,851	307	69,102	242	54,423	250	56,186
Heavy Duty High Capacity	1067	42	2.22	2.9	2867	6,320	275	61,851	307	69,102	242	54,423	250	56,186
Heavy Duty High Capacity	1219	48	2.06	2.7	2966	6,540	275	61,851	307	69,102	242	54,423	250	56,186
Heavy Duty High Capacity	1370	54	3.09	4.0	3129	6,898	275	61,851	307	69,102	242	54,423	250	56,186
Heavy Duty High Capacity	1524	60	3.54	4.6	3302	7,280	275	61,851	307	69,102	242	54,423	250	56,186
Heavy Duty High Capacity	1829	72	4.44	5.8	3593	7,921	275	61,851	307	69,102	242	54,423	250	56,186
Heavy Duty High Capacity	2032	80	5.05	6.6	3916	8,634	275	61,851	307	69,102	242	54,423	250	56,186
Heavy Capacity Dirt	2184	86	4.59	6.0	3941	8,688	287	64,421	320	71,973	246	55,278	254	57,069
Heavy Duty	914	36	1.30	1.7	2252	4,964	326	73,327	364	81,924	258	57,940	266	59,817
Heavy Duty	1067	42	1.58	2.1	2594	5,719	326	73,327	364	81,924	258	57,940	266	59,817
Heavy Duty	1219	48	1.90	2.5	2722	6,000	326	73,327	364	81,924	258	57,940	266	59,817
Heavy Duty	1370	54	2.19	2.9	2858	6,302	326	73,327	364	81,924	258	57,940	266	59,817
Heavy Duty	1524	60	2.52	3.3	3062	6,750	326	73,327	364	81,924	258	57,940	266	59,817
Truck Loading	1930	76	3.75	4.9	3043	6,709	287	64,421	320	71,973	246	55,278	254	57,069
Truck Loading	2083	82	4.05	5.3	3292	7,257	287	64,421	320	71,973	246	55,278	254	57,069

Bucket Selection Guide*



*Contact your John Deere dealer for optimum bucket and attachment selections. These recommendations are for general conditions and average use. Does not include optional equipment such as thumbs or couplers. Larger buckets may be possible when using light materials, for flat and level operations, less compacted materials, and volume loading applications such as mass excavation applications in ideal conditions. Smaller buckets are recommended for adverse conditions such as off-level applications, rocks, and uneven surfaces. Bucket capacity indicated is SAE heaped.

Arm Dig Force 4.2 m (13 ft. 9 in.) (SAE)		Arm Dig Force 4.2 m (13 ft. 9 in.) (ISO)		Arm Dig Force 5.3 m (17 ft. 5 in.) (SAE)		Arm Dig Force 5.3 m (17 ft. 5 in.) (ISO)		ME Arm Dig Force 2.9 m (9 ft. 6 in.) (SAE)		ME Arm Dig Force 2.9 m (9 ft. 6 in.) (ISO)		Bucket Tip Radius		Number of Teeth
kN	lb.	kN	lb.	kN	lb.	kN	lb.	kN	lb.	kN	lb.	mm	in.	
220	49,448	227	50,993	189	42,497	193	43,383	290	65,260	299	67,238	2281	89.79	3
220	49,448	227	50,993	189	42,497	193	43,383	290	65,260	299	67,238	2281	89.79	3
220	49,448	227	50,993	189	42,497	193	43,383	290	65,260	299	67,238	2281	89.79	3
220	49,448	227	50,993	189	42,497	193	43,383	290	65,260	299	67,238	2281	89.79	3
220	49,448	227	50,993	189	42,497	193	43,383	290	65,260	299	67,238	2281	89.79	3
220	49,448	227	50,993	189	42,497	193	43,383	290	65,260	299	67,238	2281	89.79	4
220	49,448	227	50,993	189	42,497	193	43,383	290	65,260	299	67,238	2281	89.79	5
220	49,448	227	50,993	189	42,497	193	43,383	290	65,260	299	67,238	2281	89.79	5
220	49,448	227	50,993	189	42,497	193	43,383	290	65,260	299	67,238	2281	89.79	6
220	49,448	227	50,993	189	42,497	193	43,383	290	65,260	299	67,238	2281	89.79	6
223	50,152	230	51,720	58	13,013	195	43,910	295	66,427	304	68,440	2190	86.23	6
233	52,331	240	53,996	198	44,597	203	45,526	312	70,090	321	72,214	1924	75.75	3
233	52,331	240	53,996	198	44,597	203	45,526	312	70,090	321	72,214	1924	75.75	4
233	52,331	240	53,996	198	44,597	203	45,526	312	70,090	321	72,214	1924	75.75	4
233	52,331	240	53,996	198	44,597	203	45,526	312	70,090	321	72,214	1924	75.75	5
233	52,331	240	53,996	198	44,597	203	45,526	312	70,090	321	72,214	1924	75.75	5
223	50,152	230	51,720	58	13,013	195	43,910	295	66,427	304	68,440	2189	86.20	6
223	50,152	230	51,720	58	13,013	195	43,910	295	66,427	304	68,440	2189	86.20	7