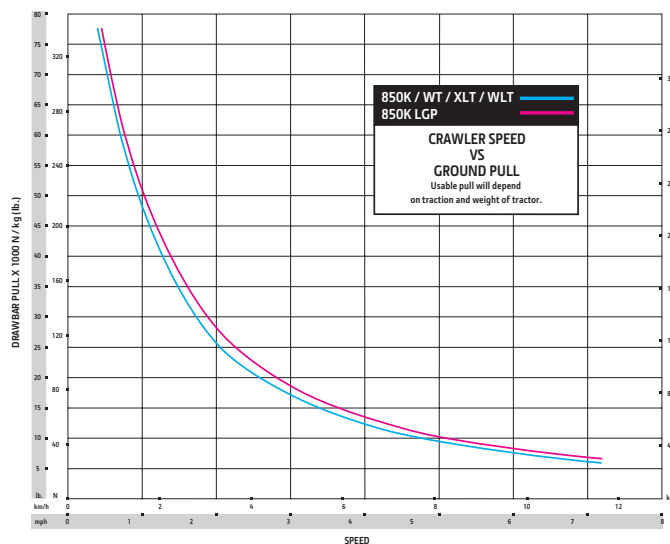


# 850K



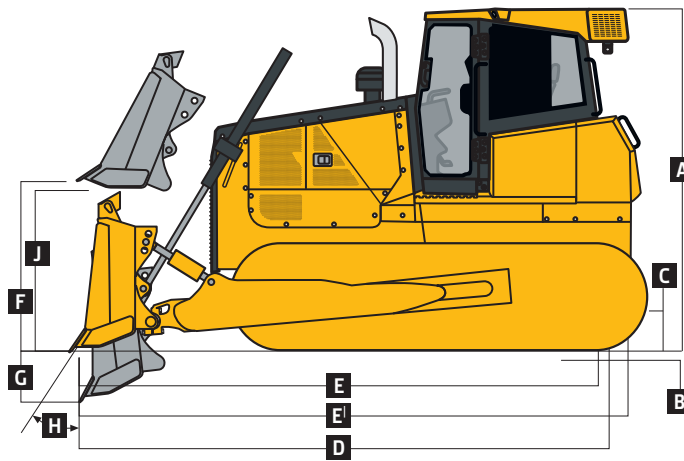
Engine	850K / WT / LGP	850K XLT	850K WLT / LGP	
<b>Blade Type</b>	<b>Outside Dozer Blade (OSD)</b>	<b>Power Angle Tilt (PAT)</b>		
Manufacturer and Model	John Deere PowerTech™ PVX 6068	John Deere PowerTech PVX 6068		
Non-Road Emissions Standard	EPA Interim Tier 4/EU Stage IIIB	EPA Interim Tier 4/EU Stage IIIB		
Displacement	6.8 L (414 cu. in.)	6.8 L (414 cu. in.)	6.8 L (414 cu. in.)	
SAE Net Rated Power	152 kW (205 hp) at 1,800 rpm	139.5 kW (187 hp) at 1,800 rpm	152 kW (205 hp) at 1,800 rpm	
Net Peak Torque	915 Nm (675 lb.-ft.) at 1,500 rpm	829 Nm (611 lb.-ft.) at 1,500 rpm	915 Nm (675 lb.-ft.) at 1,500 rpm	
Aspiration	Turbocharged with charge air cooler	Turbocharged with charge air cooler		
Air Cleaner	Vacuum-aspirated dual-element dry canister	Vacuum-aspirated dual-element dry canister		
Slope Operation, Maximum Angle	45-deg. fore-aft / 30-deg. side slope	45-deg. fore-aft / 30-deg. side slope		
<b>Cooling</b>	<b>850K / 850K WT / 850K LGP / 850K XLT / 850K WLT</b>			
Type	Variable-speed suction fan with automatic reversing			
Engine Coolant Rating	-37 deg. C (-34 deg. F)			
Engine Radiator	10 fins per in.			
<b>Powertrain</b>	<b>850K / 850K WT</b>	<b>850K LGP</b>	<b>850K XLT / 850K WLT</b>	<b>850K LGP</b>
<b>Blade Type</b>	<b>OSD</b>		<b>PAT</b>	
<b>Transmission</b>	Automatic, dual-path, hydrostatic drive; load-sensing feature automatically adjusts speed and power to match changing load conditions; each individually controlled track is powered by a variable-displacement piston pump and motor combination; ground-speed selection buttons on single-lever steering and direction control; independently selectable reverse speed ratios of 100%, 115%, or 130% of forward ground speed; decelerator pedal controls ground speed to stop			
System Relief Pressure	45,850 kPa (6650 psi)	45,850 kPa (6650 psi)	45,850 kPa (6650 psi)	45,850 kPa (6650 psi)
<b>Travel Speeds</b>				
Forward and Reverse	9.7 km/h (6.0 mph)	9.7 km/h (6.0 mph)	9.7 km/h (6.0 mph)	9.7 km/h (6.0 mph)
Maximum (optional)	11.0 km/h (6.8 mph)	11.0 km/h (6.8 mph)	11.0 km/h (6.8 mph)	11.0 km/h (6.8 mph)
<b>Steering</b>	Single-lever steering, speed, direction control, and counterrotation; full power turns and infinitely variable track speeds provide unlimited maneuverability and optimum control; hydrostatic steering eliminates steering clutches and brakes			
<b>Final Drives</b>	Double-reduction, planetary final drives mounted independently of track frames and dozer push frames for isolation from shock loads			
Total Ratio	44.75 to 1			
<b>Drawbar Pull</b>				
Maximum	344 kN (77,300 lb.)	344 kN (77,300 lb.)	344 kN (77,300 lb.)	344 kN (77,300 lb.)
At 1.9 km/h (1.2 mph)	167 kN (37,500 lb.)	178 kN (40,000 lb.)	167 kN (37,500 lb.)	178 kN (40,000 lb.)
At 3.2 km/h (2.0 mph)	120 kN (27,000 lb.)	131 kN (29,500 lb.)	120 kN (27,000 lb.)	131 kN (29,500 lb.)
<b>Brakes</b>				
Service	Hydrostatic (dynamic) braking stops the machine whenever direction-control lever is moved to neutral or the decelerator is depressed to the detent			
Parking	Exclusive spring-applied, hydraulically released park brake feature engages wet, multiple-disc brakes automatically whenever the engine stops, the operator depresses the decelerator pedal to the brake position, the unit is in neutral for 3 seconds (with detected motion), or the park-lock lever is in the park position; machine cannot be driven with brake applied, minimizing wearout or need for adjustment			



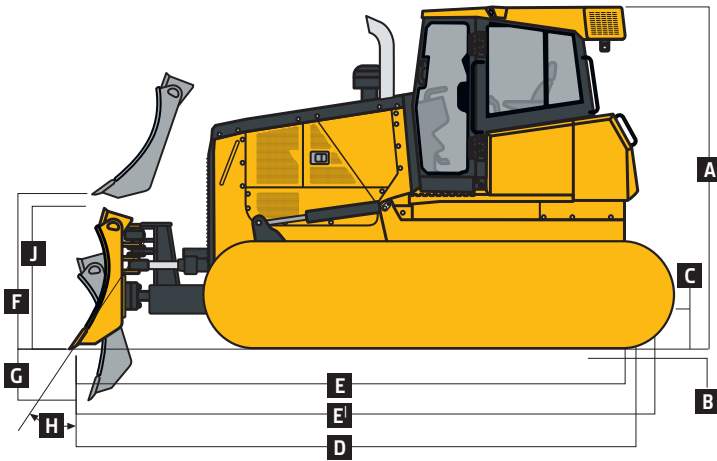


Operating Weights (continued)	850K	850K WT	850K LGP	850K XLT	850K WLT	850K LGP
Blade Type	OSD			PAT		
<b>Optional Components (continued)</b>						
Limb Risers (ROPS canopy and cab)	272 kg (600 lb.)	272 kg (600 lb.)	272 kg (600 lb.)	272 kg (600 lb.)	272 kg (600 lb.)	272 kg (600 lb.)
Heavy-Duty Grille	35 kg (78 lb.)	35 kg (78 lb.)	35 kg (78 lb.)	35 kg (78 lb.)	35 kg (78 lb.)	35 kg (78 lb.)
Lift-Cylinder Hose Guards	80 kg (176 lb.)	80 kg (176 lb.)	80 kg (176 lb.)	42 kg (93 lb.)	42 kg (93 lb.)	42 kg (93 lb.)
Tank Guards	323 kg (712 lb.)	323 kg (712 lb.)	323 kg (712 lb.)	323 kg (712 lb.)	323 kg (712 lb.)	323 kg (712 lb.)
Counterweight						
Front	397 kg (875 lb.)	397 kg (875 lb.)	397 kg (875 lb.)	397 kg (875 lb.)	397 kg (875 lb.)	397 kg (875 lb.)
Rear	449 kg (990 lb.)	449 kg (990 lb.)	449 kg (990 lb.)	449 kg (990 lb.)	449 kg (990 lb.)	449 kg (990 lb.)
Retrieval Hitch	52 kg (114 lb.)	52 kg (114 lb.)	52 kg (114 lb.)	52 kg (114 lb.)	52 kg (114 lb.)	52 kg (114 lb.)
Drawbar, Extended Rigid	130 kg (286 lb.)	130 kg (286 lb.)	130 kg (286 lb.)	130 kg (286 lb.)	130 kg (286 lb.)	130 kg (286 lb.)
Blade Brush Guard	87 kg (192 lb.)	87 kg (192 lb.)	87 kg (192 lb.)	87 kg (192 lb.)	87 kg (192 lb.)	87 kg (192 lb.)
Center Chain Guides	85 kg (188 lb.)	85 kg (188 lb.)	85 kg (188 lb.)	85 kg (188 lb.)	85 kg (188 lb.)	85 kg (188 lb.)
Full-Length Rock Guards	222 kg (490 lb.)	222 kg (490 lb.)	242 kg (534 lb.)	242 kg (534 lb.)	242 kg (534 lb.)	242 kg (534 lb.)
Striker Bars						
Front	—	111 kg (245 lb.)	147 kg (325 lb.)	—	73 kg (160 lb.)	73 kg (160 lb.)
Rear	—	166 kg (366 lb.)	78 kg (171 lb.)	—	78 kg (171 lb.)	78 kg (171 lb.)
Pre-Cleaner						
Powered Cab Air	21 kg (47 lb.)	21 kg (47 lb.)	21 kg (47 lb.)	21 kg (47 lb.)	21 kg (47 lb.)	21 kg (47 lb.)
Rotary Ejector Engine Air	6 kg (13 lb.)	6 kg (13 lb.)	6 kg (13 lb.)	6 kg (13 lb.)	6 kg (13 lb.)	6 kg (13 lb.)
Track Shoes						
560-mm (22 in.) Extreme Duty	155 kg (342 lb.)	–213 kg (–470 lb.)	—	175 kg (385 lb.)	—	—
610-mm (24 in.) Moderate Duty	In base	–368 kg (–812 lb.)	–847 kg (–1,868 lb.)	In base	—	–850 kg (–1,873 lb.)
610-mm (24 in.) Extreme Duty	307 kg (677 lb.)	–61 kg (–135 lb.)	–502 kg (–1,108 lb.)	346 kg (762 lb.)	—	–504 kg (–1,111 lb.)
760-mm (30 in.) Moderate Duty	—	In base	—	—	In base	–435 kg (–959 lb.)
760-mm (30 in.) Extreme Duty	—	395 kg (870 lb.)	—	—	444 kg (979 lb.)	9 kg (19 lb.)
910-mm (36 in.) Moderate Duty	—	—	In base	—	—	In base
910-mm (36 in.) Extreme Duty	—	—	523 kg (1,153 lb.)	—	—	524 kg (1,155 lb.)

Machine Dimensions	850K / 850K WT	850K LGP	850K XLT / 850K WLT / 850K LGP
Blade Type	OSD		PAT



850K / 850K WT / 850K LGP WITH OUTSIDE DOZER BLADE

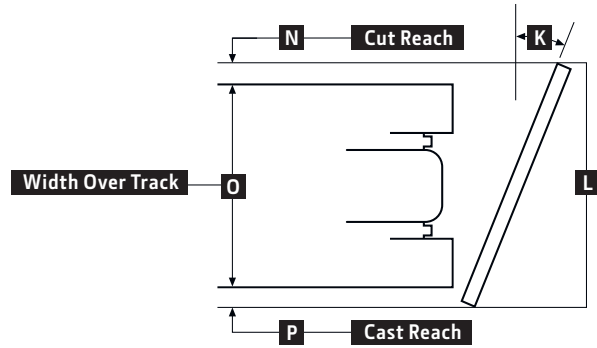
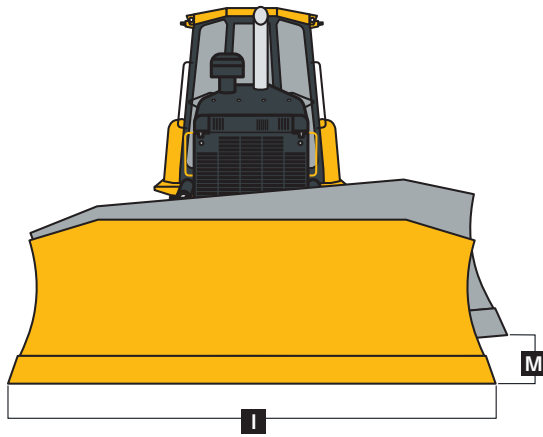


850K XLT / 850K WLT / 850K LGP WITH PAT BLADE

<b>A</b> Overall Height to Roof	3161 mm (10 ft. 4.5 in.)	3161 mm (10 ft. 4.5 in.)	3161 mm (10 ft. 4.5 in.)
<b>B</b> Tread Depth with Single-Bar Grouser			
Moderate Duty	66 mm (2.6 in.)	66 mm (2.6 in.)	66 mm (2.6 in.)
Extreme Duty	71 mm (2.8 in.)	71 mm (2.8 in.)	71 mm (2.8 in.)
<b>C</b> Ground Clearance in Dirt	409 mm (16.1 in.)	409 mm (16.1 in.)	409 mm (16.1 in.)
<b>D</b> Overall Length	5384 mm (17 ft. 8 in.)	5940 mm (19 ft. 6 in.)	5740 mm (18 ft. 10 in.)
<b>E</b> Length with Retrieval Hitch	5384 mm (17 ft. 8 in.)	5940 mm (19 ft. 6 in.)	5740 mm (18 ft. 10 in.)
<b>E'</b> Length with Extended Drawbar	5569 mm (18 ft. 3 in.)	6137 mm (20 ft. 3 in.)	5940 mm (19 ft. 6 in.)
<b>F</b> Blade Lift Height	1151 mm (45 in.)	1151 mm (45 in.)	1072 mm (42 in.)
<b>G</b> Blade Digging Depth	599 mm (24 in.)	599 mm (24 in.)	704 mm (28 in.)
<b>H</b> Blade Cutting-Edge Angle, Adjustable	51.5 to 61.0 deg.	51.5 to 61.0 deg.	55.1 to 60.2 deg.

Machine Dimensions <i>(continued)</i>	850K OSD	850K WT	850K LGP	850K XLT PAT	850K WLT	850K LGP
---------------------------------------	-------------	---------	----------	-----------------	----------	----------

**Blade Type**



<b>Semi-U</b>						
<b>I</b> Blade Width	3251 mm (128 in.) (10 ft. 8 in.)	3556 mm (140 in.) (11 ft. 8 in.)	3861 mm (152 in.) (12 ft. 8 in.)	—	—	—
<b>J</b> Blade Height	1422 mm (56 in.) (4 ft. 8 in.)	1374 mm (54 in.) (4 ft. 6 in.)	1321 mm (52 in.) (4 ft. 4 in.)	—	—	—
SAE Capacity	5.6 m <sup>3</sup> (7.3 cu. yd.)	5.8 m <sup>3</sup> (7.6 cu. yd.)	6.0 m <sup>3</sup> (7.8 cu. yd.)	—	—	—
Weight	1643 kg (3,286 lb.)	1567 kg (3,455 lb.)	1641 kg (3,612 lb.)	—	—	—
Push-Beam Assembly Weight (without blade)	1820 kg (4,004 lb.)	1889 kg (4,156 lb.)	2101 kg (4,622 lb.)	—	—	—
<b>M</b> Blade Tilt	753 mm (30 in.)	753 mm (30 in.)	853 mm (34 in.)	—	—	—
<b>O</b> Width Over Track	2489 mm (98 in.) (8 ft. 2 in.)	2794 mm (110 in.) (9 ft. 2 in.)	3099 mm (122 in.) (10 ft. 2 in.)	—	—	—
<b>Straight</b>						
<b>I</b> Blade Width	—	—	3912 mm (154 in.) (12 ft. 10 in.)	3708 mm (146 in.) (12 ft. 2 in.)	4013 mm (158 in.) (13 ft. 2 in.)	4267 mm (168 in.) (14 ft. 0 in.)
<b>J</b> Blade Height	—	—	—	1229 mm (48 in.) (4 ft. 0 in.)	1229 mm (48 in.) (4 ft. 0 in.)	1229 mm (48 in.) (4 ft. 0 in.)
SAE Capacity	—	—	4.1 m <sup>3</sup> (5.0 cu. yd.)	3.9 m <sup>3</sup> (5.2 cu. yd.)	4.3 m <sup>3</sup> (5.6 cu. yd.)	4.5 m <sup>3</sup> (5.9 cu. yd.)
Weight	—	—	1561 kg (3,441 lb.)	1251 kg (2,758 lb.)	1330 kg (2,932 lb.)	1397 kg (3,080 lb.)
C-Frame Assembly Weight (without blade)	—	—	2101 kg (4,622 lb.)	1647 kg (3,631 lb.)	1647 kg (3,631 lb.)	1647 kg (3,631 lb.)
<b>K</b> Blade Angle	—	—	—	23.8 deg.	23.8 deg.	23.8 deg.
<b>L</b> Overall Width with Blade Angled	—	—	—	3391 mm (134 in.) (11 ft. 2 in.)	3658 mm (144 in.) (12 ft. 0 in.)	3901 mm (154 in.) (12 ft. 10 in.)
<b>M</b> Blade Tilt (uses tilt jack)	—	—	—	508 mm (20 in.)	533 mm (21 in.)	572 mm (23 in.)
<b>N</b> Cut Reach	—	—	—	158 mm (6.2 in.)	145 mm (5.7 in.)	109 mm (4.3 in.)
<b>O</b> Width Over Track	—	—	—	2693 mm (106 in.) (8 ft. 10 in.)	2997 mm (118 in.) (9 ft. 10 in.)	3302 mm (130 in.) (10 ft. 10 in.)
<b>P</b> Cast Reach	—	—	—	284 mm (11.2 in.)	272 mm (10.7 in.)	234 mm (9.2 in.)

**Rear Ripper 850K / 850K WT / 850K LGP / 850K XLT / 850K WLT**

Multi-shank (3) parallelogram ripper with hydraulic pitch adjustment and ESCO ripper tips	
Weight	2032 kg (4,480 lb.)
<b>Q</b> Maximum Penetration	724 mm (28.5 in.)
<b>R</b> Maximum Clearance Under Tip	610 mm (24 in.)
<b>S</b> Overall Length, Lowered Position	1626 mm (64 in.)
<b>S'</b> Overall Length, Raised Position	1525 mm (60 in.)
<b>T</b> Overall Beam Width	2400 mm (7 ft. 10 in.)
<b>U</b> Slope Angle (full raise)	24 deg.
<b>V</b> Ripping Width	2146 mm (7 ft. 1 in.)
<b>W</b> Distance Between Shanks	1041 mm (3 ft. 5 in.)

