

750K



Engine	750K XLT	750K LGP	750K
Blade Type	Power Angle Tilt (PAT)	Power Angle Tilt (PAT)	Outside Dozer Blade (OSD)
Manufacturer and Model	John Deere PowerTech™ PVX 6068	John Deere PowerTech PVX 6068	John Deere PowerTech PVX 6068
Non-Road Emissions Standard	EPA Interim Tier 4/EU Stage IIIB	EPA Interim Tier 4/EU Stage IIIB	EPA Interim Tier 4/EU Stage IIIB
Displacement	6.8 L (414 cu. in.)	6.8 L (414 cu. in.)	6.8 L (414 cu. in.)
SAE Net Rated Power	116 kW (155 hp) at 1,800 rpm	123 kW (165 hp) at 1,800 rpm	123 kW (165 hp) at 1,800 rpm
Net Peak Torque	720 Nm (531 lb.-ft.) at 1,400 rpm	768 Nm (567 lb.-ft.) at 1,400 rpm	768 Nm (567 lb.-ft.) at 1,400 rpm
Aspiration	Turbocharged with charge air cooler	Turbocharged with charge air cooler	Turbocharged with charge air cooler
Air Cleaner	Vacuum-aspirated dual-element dry canister	Vacuum-aspirated dual-element dry canister	Vacuum-aspirated dual-element dry canister
Slope Operation, Maximum Angle	45-deg. fore-aft / 30-deg. side slope	45-deg. fore-aft / 30-deg. side slope	45-deg. fore-aft / 30-deg. side slope

Cooling

750K XLT / 750K LGP / 750K	
Type	Variable-speed suction fan with automatic reversing
Engine Coolant Rating	-37 deg. C (-34 deg. F)
Engine Radiator	10 fins per in.

Powertrain

Transmission Automatic, dual-path, hydrostatic drive; load-sensing feature automatically adjusts speed and power to match changing load conditions; each individually controlled track is powered by a variable-displacement piston pump and motor combination; ground-speed selection buttons on single-lever steering and direction control; independently selectable reverse speed ratios of 100%, 115%, or 130% of forward ground speed; decelerator pedal controls ground speed to stop

System Relief Pressure 45 850 kPa (6,650 psi)

Travel Speeds

Forward and Reverse 9.7 km/h (6.0 mph)

Maximum (optional) 11.0 km/h (6.8 mph)

Steering Single-lever steering, speed, direction control, and counterrotation; full power turns and infinitely variable track speeds provide unlimited maneuverability and optimum control; hydrostatic steering eliminates steering clutches and brakes

Final Drives Double-reduction, planetary final drives mounted independently of track frames and dozer push frames for isolation from shock loads

Total Ratio 46.41 to 1

Drawbar Pull

Maximum 245 kN (55,000 lb.)

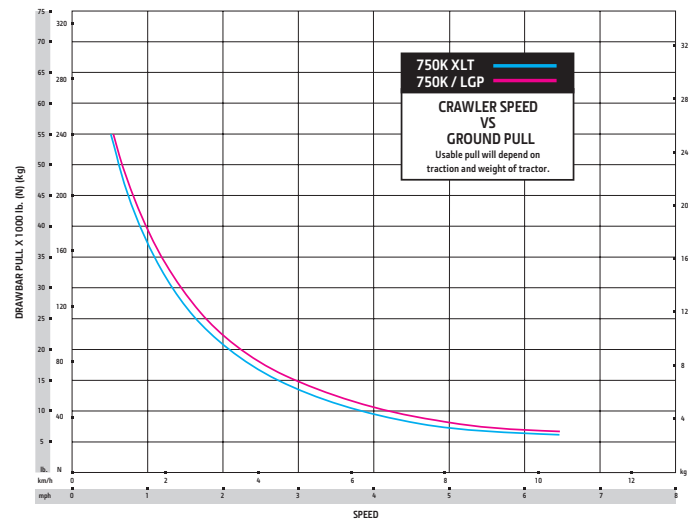
At 1.9 km/h (1.2 mph) 147 kN (33,000 lb.)

At 3.2 km/h (2.0 mph) 98 kN (22,000 lb.)

Brakes

Service Hydrostatic (dynamic) braking stops the machine whenever direction-control lever is moved to neutral or the decelerator is depressed to the detent
Exclusive spring-applied, hydraulically released park brake feature engages wet, multiple-disc brakes automatically whenever the engine stops, the operator depresses the decelerator pedal to the brake position, the unit is in neutral for 3 seconds (with detected motion), or the park-lock lever is in the park position; machine cannot be driven with brake applied, minimizing wearout or need for adjustment

Parking

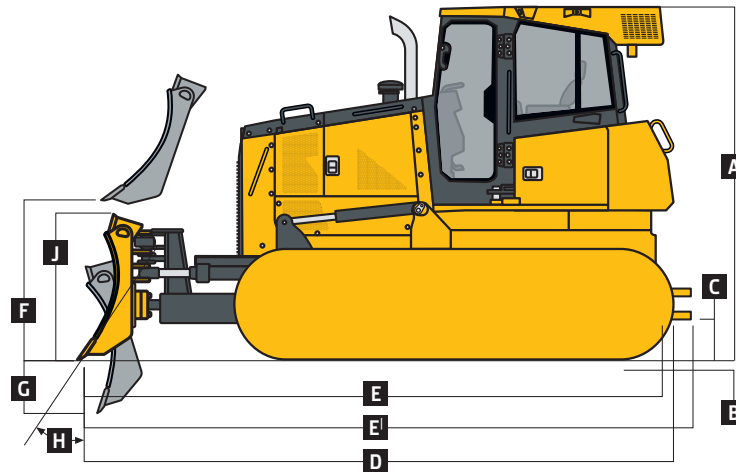




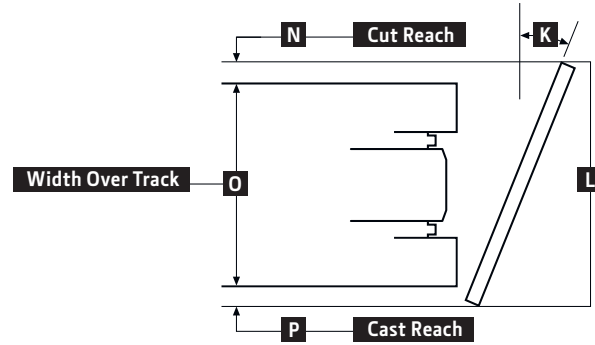
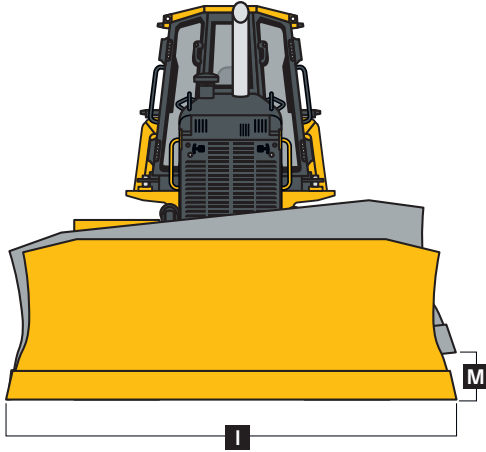
Hydraulics		750K XLT / 750K LGP		750K
Blade Type	PAT			OSD
Type	Load sense hydraulic system with variable-displacement piston pump			Load sense hydraulic system with variable-displacement piston pump
Pump Displacement	63 cc			63 cc
System Relief Pressure	24 993 kPa (3,625 psi)			24 993 kPa (3,625 psi)
Differential Pressure	1896 kPa (275 psi)			1896 kPa (275 psi)
Maximum Flow at Unloaded High Idle	138 L/m (36 gpm)			138 L/m (36 gpm)
Control	3-function hydraulic-pilot T-bar joystick with push-button angle function			2-function hydraulic-pilot T-bar joystick
Electrical		750K XLT / 750K LGP / 750K		
Voltage	24 volts			
Battery Capacity	950 CCA			
Reserve Capacity	190 min.			
Alternator Rating				
Cab	130 amp			
Canopy	100 amp			
Lights	Grille mounted (2), rear mounted (2), engine compartment (1), and rear reflectors (2)			
Undercarriage		750K XLT	750K LGP	750K
Blade Type	PAT	PAT	PAT	OSD
Tracks	John Deere Dura Trax™ features large deep-heat-treated, sealed, and lubricated track links and through-hardened, sealed, and lubricated rollers for maximum wear resistance; sprockets are segmented; extreme-duty shoes are available (on some models) for severe applications			
Track Gauge	1880 mm (74 in.)	2134 mm (84 in.)	1880 mm (74 in.)	
Grouser Width	560 mm (22 in.)	865 mm (34 in.)	560 mm (22 in.)	
Chain	Sealed and lubricated	Sealed and lubricated	Sealed and lubricated	
Shoes, Each Side	45	45	40	
Track Rollers, Each Side	8	8	7	
Track Length On Ground	3073 mm (121 in.)	3073 mm (121 in.)	2591 mm (102 in.)	
Ground Contact Area	34 344 cm ² (5,323 sq. in.)	53 077 cm ² (8,227 sq. in.)	28 957 cm ² (4,488 sq. in.)	
Ground Pressure	44.5 kPa (6.46 psi)	31.5 kPa (4.57 psi)	52.9 kPa (7.67 psi)	
Track Pitch	191 mm (7.5 in.)	191 mm (7.5 in.)	191 mm (7.5 in.)	
Oscillation at Front Roller	± 1135 mm (± 5.3 in.)	± 127 mm (± 5.0 in.)	± 110 mm (± 4.3 in.)	
Operator Station		750K XLT / 750K LGP / 750K		
ROPS (ISO 3471 – 2008) and FOPS (ISO 3449 – 2005)				
Serviceability				
Refill Capacities				
Fuel Tank with Lockable Cap	356 L (94 gal.)			
Cooling System with Recovery Tank	36.4 L (9.6 gal.)			
Engine Oil with Filter	24.6 L (6.5 gal.)			
Transmission Reservoir with Filter	106 L (28 gal.)			
Hydraulic Reservoir and Filter	106 L (28 gal.)			

Operating Weights	750K XLT	750K LGP	750K
Blade Type	PAT	PAT	OSD
<i>Base Weight (with standard equipment, rollover protective structure [ROPS], full fuel tank, and 79-kg [175 lb.] operator)</i>	15 593 kg (34,377 lb.)	17 053 kg (37,595 lb.)	15 611 kg (34,416 lb.)
Optional Components			
Cab with Pressurizer and Heater/Air Conditioner	337 kg (743 lb.)	337 kg (743 lb.)	337 kg (743 lb.)
Heater (ROPS canopy)	39 kg (85 lb.)	39 kg (85 lb.)	39 kg (85 lb.)
Front and Door Screens			
ROPS Canopy	84 kg (186 lb.)	84 kg (186 lb.)	84 kg (186 lb.)
Cab with Air Conditioner	79 kg (175 lb.)	79 kg (175 lb.)	79 kg (175 lb.)
Rear Screen			
ROPS Canopy	23 kg (50 lb.)	23 kg (50 lb.)	23 kg (50 lb.)
Cab with Air Conditioner	34 kg (75 lb.)	34 kg (75 lb.)	34 kg (75 lb.)
Side Screens			
ROPS Canopy	44 kg (98 lb.)	44 kg (98 lb.)	44 kg (98 lb.)
Cab with Air Conditioner	54 kg (120 lb.)	54 kg (120 lb.)	54 kg (120 lb.)
Condenser Guard (cab with air conditioner)	55 kg (121 lb.)	55 kg (121 lb.)	55 kg (121 lb.)
Limb Risers (ROPS canopy and cab)	261 kg (575 lb.)	261 kg (575 lb.)	261 kg (575 lb.)
Heavy-Duty Grille	28 kg (62 lb.)	28 kg (62 lb.)	28 kg (62 lb.)
Lift-Cylinder Hose Guards	42 kg (93 lb.)	42 kg (93 lb.)	77 kg (170 lb.)
Tank Guards	323 kg (712 lb.)	323 kg (712 lb.)	323 kg (712 lb.)
Counterweight, Rear	326 kg (720 lb.)	326 kg (720 lb.)	326 kg (720 lb.)
Retrieval Hitch	37 kg (81 lb.)	37 kg (81 lb.)	37 kg (81 lb.)
Drawbar, Extended Rigid	130 kg (286 lb.)	130 kg (286 lb.)	130 kg (286 lb.)
Blade Brush Guard	87 kg (192 lb.)	87 kg (192 lb.)	87 kg (192 lb.)
Center Chain Guides	61 kg (135 lb.)	61 kg (135 lb.)	61 kg (135 lb.)
Full-Length Rock Guards	154 kg (340 lb.)	154 kg (340 lb.)	174 kg (384 lb.)
Track Shoes			
560-mm (22 in.) Moderate Duty	In base	—	In base
560-mm (22 in.) Extreme Duty	134 kg (296 lb.)	—	119 kg (263 lb.)
610-mm (24 in.) Moderate Duty	140 kg (309 lb.)	—	125 kg (275 lb.)
610-mm (24 in.) Extreme Duty	289 kg (637 lb.)	—	257 kg (566 lb.)
710-mm (28 in.) Moderate Duty	—	-418 kg (-922 lb.)	—
865-mm (34 in.) Moderate Duty	—	In base	—

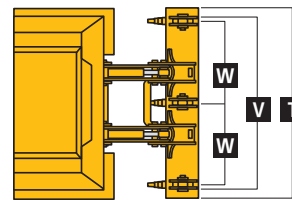
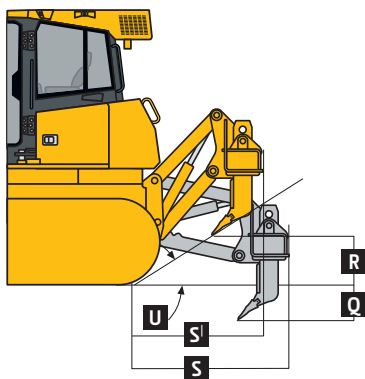
Machine Dimensions	750K XLT	750K LGP	750K
Blade Type	PAT	PAT	OSD



A Overall Height to Roof	3077 mm (10 ft. 1 in.)	3077 mm (10 ft. 1 in.)	3077 mm (10 ft. 1 in.)
B Tread Depth with Single-Bar Grouser			
Moderate Duty	56 mm (2.2 in.)	56 mm (2.2 in.)	56 mm (2.2 in.)
Extreme Duty	69 mm (2.7 in.)	69 mm (2.7 in.)	69 mm (2.7 in.)
C Ground Clearance in Dirt	356 mm (14 in.)	356 mm (14 in.)	356 mm (14 in.)
D Overall Length	4921 mm (16 ft. 5 in.)	5246 mm (17 ft. 3 in.)	4937 mm (16 ft. 2 in.)
E Length with Retrieval Hitch	4921 mm (16 ft. 5 in.)	5246 mm (17 ft. 3 in.)	4937 mm (16 ft. 2 in.)
E' Length with Extended Drawbar	5210 mm (17 ft. 1 in.)	5535 mm (18 ft. 2 in.)	5226 mm (17 ft. 2 in.)
F Blade Lift Height	1025 mm (40.3 in.)	1025 mm (40.3 in.)	1050 mm (41.3 in.)
G Blade Digging Depth	650 mm (25.6 in.)	650 mm (25.6 in.)	575 mm (22.6 in.)
H Blade Cutting-Edge Angle, Adjustable	55.2 to 60.1 deg.	55.2 to 60.1 deg.	50.5 to 60.0 deg.

Machine Dimensions (continued)
Blade Type
750K XLT
PAT
750K LGP
PAT
750K
OSD


Semi-U			
I	Blade Width	—	3251 mm (128 in.) (10 ft. 8 in.)
J	Blade Height	—	1240 mm (48.8 in.) (4 ft. 8 in.)
	SAE Capacity	—	4.3 m ³ (5.6 cu. yd.)
	Weight	—	1163 kg (2,564 lb.)
	Push-Beam Assembly Weight (without blade)	—	1470 kg (3,242 lb.)
M	Blade Tilt	—	711 mm (28 in.)
O	Width Over Track	—	2438 mm (96 in.) (8 ft. 0 in.)
Straight			
I	Blade Width	3296 mm (130 in.) (10 ft. 10 in.)	3962 mm (156 in.) (13 ft. 0 in.)
J	Blade Height	1194 mm (47 in.) (3 ft. 11 in.)	1170 mm (46.1 in.) (3 ft. 10.1 in.)
	SAE Capacity	2.2 m ³ (4.2 cu. yd.)	3.8 m ³ (5.0 cu. yd.)
	Weight	937 kg (2,066 lb.)	1081 kg (2,383 lb.)
	C-Frame Assembly Weight (without blade)	1318 kg (2,905 lb.)	1318 kg (2,905 lb.)
K	Blade Angle	23.5 deg.	23.5 deg.
L	Overall Width with Blade Angled	3020 mm (118.9 in.) (9 ft. 10.9 in.)	3631 mm (142.9 in.) (11 ft. 10.9 in.)
M	Blade Tilt (uses tilt jack)	437 mm (17.2 in.)	524 mm (20.6 in.)
N	Cut Reach	108 mm (4.3 in.)	84 mm (3.3 in.)
O	Width Over Track	2438 mm (96 in.) (8 ft. 0 in.)	2997 mm (118 in.) (9 ft. 10 in.)
P	Cast Reach	224 mm (8.8 in.)	297 mm (11.7 in.)

Rear Ripper 750K XLT / 750K LGP / 750K


Heavy-duty parallelogram ripper, 5 shank pockets with 3 teeth	
Weight	1690 kg (3,725 lb.)
Q	Maximum Penetration 686 mm (27 in.)
R	Maximum Clearance Under Tip 686 mm (27 in.)
S	Overall Length, Lowered Position 1689 mm (67 in.)
S'	Overall Length, Raised Position 1448 mm (57 in.)
T	Overall Beam Width 2134 mm (7 ft. 0 in.)
U	Slope Angle (full raise) 22 deg.
V	Ripping Width 1880 mm (6 ft. 2 in.)
W	Distance Between Shanks 902 mm (36 in.)