

# 550K/650K CRAWLER DOZERS

63–75 kW (85–101 hp)



**JOHN DEERE**





Only our K-Series dozers are available with John Deere WorkSight™. This easy-to-use comprehensive suite of technology increases uptime and productivity while lowering operating costs. JDLink™ machine monitoring provides real-time machine utilization and health data, plus location information. Fleet Care proactively suggests maintenance to correct problems early before they create costly downtime. Service ADVISOR™ Remote enables your dealer to read diagnostic codes, record performance data, and even update software without a trip to the jobsite. And Integrated Grade Control (IGC) makes it easy to add your preferred grade-control system.

# We hear you loud and clear.

When our customers sound off, we listen. So when participants in our Customer Advocate Group (CAG) asked us to turn down the noise and turn up productivity on our 550K and 650K Crawlers, we responded with a spacious, redesigned cab that's noticeably quieter. And a more powerful EPA IT4/EU Stage IIIB diesel. Equipment owners and operators will also find lots more to like in the K-Series — such as a hydraulic-driven fan that provides efficient cooling, reduces noise, and conserves precious fuel. And a convenient sealed-switch module for fingertip control of numerous one-of-a-kind features and functions. To hear all the reasons why our K-Series Dozers are a sound choice, talk to your John Deere dealer today.

Our EPA IT4/EU Stage IIIB technology is simple, fuel efficient, fully integrated, and fully supported. It employs field-proven cooled exhaust gas recirculation (EGR) for reducing NO<sub>x</sub>, and a diesel particulate filter and diesel oxidation catalyst to reduce particulate matter.

At just 75 dBA, the redesigned cab is noticeably quiet. Spacious and comfortable, too.

Variable-speed on-demand fan automatically speeds up or slows down, operating only as needed to keep things cool.

Total Machine Control (TMC) enables an operator to easily customize operating characteristics and machine response — for familiar operation and predictable control.

Specifications	550K XLT/LGP		650K XLT/LGP	
Rated Power	63 kW (85 hp)		75 kW (101 hp)	
Base Weight	550K XLT	550K LGP	650K XLT	650K LGP
	8750 kg (19,290 lb.)	9195 kg (20,772 lb.)	8890 kg (19,599 lb.)	9355 kg (20,624 lb.)



# Pushes envelopes, too.

Power turns. Counterrotating tracks. Power management. Infinitely variable travel speeds. We introduced these productivity-boosting advantages more than 35 years ago. And the K-Series is loaded with even more performance enhancements. Like Total Machine Control (TMC). Standard on all of our K-Series Crawlers, this performance-enhancing feature provides customized decelerator mode and response, forward/reverse ground-speed ranges, steering modulation, and more. It enables your operators to do their best, by being themselves.



These crawlers steer the same and maintain their preset speed whether working on level ground or a 2-to-1 slope. So there's never a need to cross-steer or ride a brake.

Infinitely variable range to 8 km/h (5 mph) allows total flexibility to match ground speed to the load. Travel can also be varied to fit specific applications, terrain conditions, or operating preferences — and even limited to maximize undercarriage life.

With optional Integrated Grade Control, wiring harnesses, sensor mounts, control valves, and monitor bracket are factory installed. So adding your preferred grade-control system is easy. Simply plug in the components, calibrate, and go to work.

1. Blade ratio and center of gravity are optimized, providing the balance needed for superior grade work. More track on the ground and an additional bottom roller give the 550K and 650K even better balance and grading ability than their predecessors.
2. Simply set maximum desired ground speed and the power management system automatically maintains peak engine rpm and power efficiency without stalling or shifting.
3. Counterrotation boosts productivity by enabling an operator to overcome heavy corner loads and quickly reposition the blade on the go. Provides space-saving spot turns, too.



# Your silent partners.

K-Series Dozers quietly go about the business of making your operators more comfortably productive. Inside their spacious well-appointed cabs, you can almost hear fatigue drop. With plenty of tinted glass, all-around visibility is best in class. Ergonomically designed FNR joystick, steering pedals, and decelerator are fully customizable through the monitor. And the sealed-switch module allows convenient fingertip operation of keyless start and numerous other functions. You'll discover everything your operators need to get more done in a 550K or 650K Dozer.

Standard high-back air-suspension seat and optional deluxe heated and leather-bolstered lower cushion adjust multiple ways for daylong comfort and support. Arm- and footrests also adjust.

Cab-forward design provides a commanding view behind, below, and beyond the blade. Side and rear visibility is also unobstructed.

Generous hydraulic flow and precise metering ensure powerful and quick blade response, while providing the natural "feel" that makes the most of an operator's grading ability.

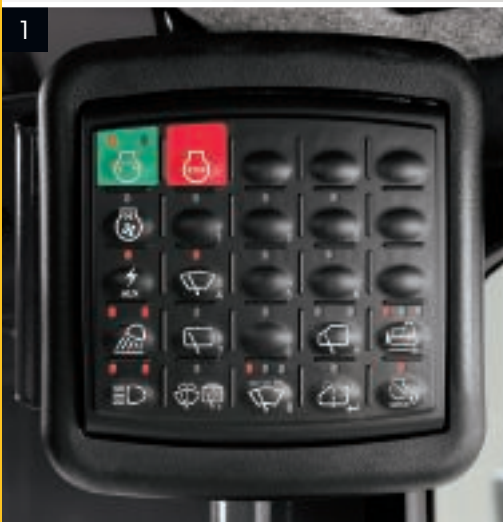
Retractable seat belt, slip-resistant floor mat, convenient grab bars, neutral-start lever, and dual park-lock levers help keep the operator out of harm's way.

Single lever provides low-effort control of steering, forward/reverse travel, and ground speed. It's also detented so it doesn't require an operator's constant touch or attention, and employs a thumb-actuated travel-speed switch.

Highly efficient HVAC system and numerous directional vents keep the view clear and the cab comfortable.

High-intensity halogen driving lights are standard. Or opt for the 360-degree light package to extend your workday beyond daylight.

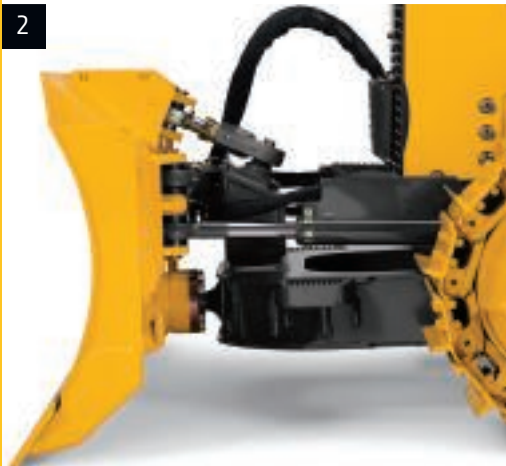
Isolation cab mounts and extensive insulation effectively separate operators from vibration and noise.






1. Sealed-switch module allows low-effort control of keyless start, and enables exclusive features such as turbocharger cool-down and auto shutdown. Touchpad security system requires a numeric pass code (when enabled) to help prevent unauthorized machine operation.
2. Operators will find plenty of space to stow beverages, a cooler, and other carry-ons. The lockable in-dash compartment is ideal for storing — or permanent placement — of a grade-control monitor.
3. Overhead radio and storage console includes a 12-volt electrical outlet for powering a cell phone or an iPod®.

1. Available maximum-life undercarriage delivers up to twice the bushing life, for extra durability in extremely abrasive conditions. If you want to further reduce maintenance and operating costs, contact your John Deere dealer about our undercarriage Wear Assurance program.
2. Closed-cell blade design and robot-welded, fabricated, box-section C-frame is strong and durable. Heavy-duty ball-and-socket joint resists material buildup for long-term grading precision.
3. Available reversing hydraulic-powered fan automatically back-blows the cooler cores at preset intervals. When conditions demand more frequent cleaning, simply press a button to actuate the reversing cycle.







Transmission temperature is constantly monitored to protect the hydrostatic system. If temps get too hot or too cold, a warning light illuminates, and the transmission and engine speed are automatically derated to prevent damage.

Exclusive turbo cool-down increases durability by allowing the engine to idle momentarily prior to shutting down.

Heavy-duty high-pressure hoses connect the pumps and motors that form the drivetrain. O-ring face-seal couplings virtually eliminate leaks.

Engine, hydrostatic pumps, and hydraulic pump are bolted to a sub-frame, forming an easy-to-remove powertrain package. It's attached to the mainframe on rubber mounts to isolate vibration and reduce noise.

Individually replaceable wet-sleeve engine-cylinder liners provide uniform engine cooling and long-term durability.

One-piece welded mainframe resists torsional stress, absorbs shock loads, and delivers maximum strength while allowing easy service access to major components.

Triple-reduction planetary final drives are mounted independent of the track frames, where they're effectively protected from shock loads.

# Nothing runs like a Deere, because nothing is built like it.

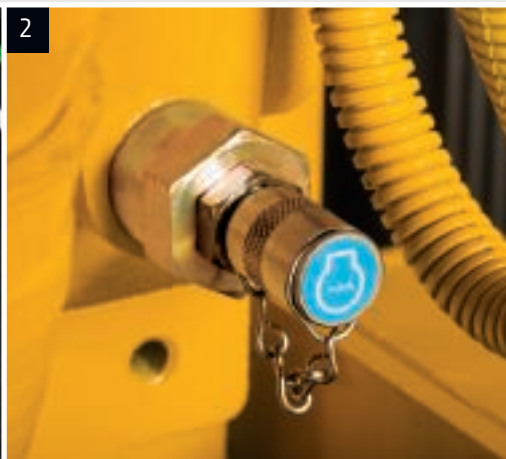
Designed and built with state-of-the-art tools and techniques by a quality-conscious workforce at our world-class facility in Dubuque, Iowa, the 550K and 650K are loaded with uptime-boosting features. Enhancements include a variable-speed hydraulic-driven cooling system fan, turbo cool-down, automatic transmission protection, and available severe-duty fuel filter. These, plus traditional John Deere features such as one-piece unitized mainframes, Dura-Trax™ undercarriages, wet-sleeve engine liners, O-ring face-seal hose couplers, and isolated planetary final drives deliver the durability you demand. When you know how they're built, you'll run a Deere.

# Declare open season on operating costs.

We're pretty open-minded when it comes to keeping uptime up and daily operating costs down. Hinged side shields reveal convenient same-side daily service points, and the front grille tilts forward, simplifying cooler-core cleanout. Other periodic tasks such as fluid and filter changes are quick and convenient, and service intervals have been extended so you can work longer between changes. With our K-Series Dozers, you'll spend less effort and expense getting ready for work — and more time getting work done.



1. Exhaust filter operation and status are indicated with icons and on-screen displays. The diagnostic monitor also provides easy-to-understand messages that help speed troubleshooting.
2. Fluid-sample ports simplify preventative maintenance. Engine, hydraulics, and transmission utilize a common oil, further simplifying service.
3. Vertical filters allow quick, no-spill changes. Available severe-duty fuel filter provides an extra degree of filtration. Includes a heated water separator for cold-weather service.





Hinged side shields swing open wide for convenient access to dipsticks, fill tubes, batteries, master electrical shutoff, and engine, transmission, and hydraulic filters.

Front grille tilts forward, simplifying cooler-core cleanout. Engine side shields also swing open to provide back-side cooler access.

Large fuel tanks and 500-hour engine-oil, oil-filter, and fuel-filter service intervals let you run longer between fill-ups and maintenance.

Sealed hydraulic and hydrostatic reservoirs are separate, eliminating any possibility of cross-contamination.

Periodic active and passive regeneration automatically cleans the diesel particulate filter without impacting machine productivity. Diesel particulate filter is easily removed through the top of the engine compartment. Minimum service interval is 5,000 hours and can be done by your John Deere dealer.

After an operator-determined period of inactivity, auto-shutdown turns off the engine preserving precious fuel and warranty hours.

Convenient color-coded lube chart ensures that nothing gets overlooked. Remote lube banks provide easy access to C-frame pivots.

Available quick fluid-evacuation system helps speed servicing. 500-hour engine oil and 2,000-hour transmission and hydraulic fluid intervals decrease downtime and expense.