



260E SPECIFICATIONS

Engine	260E	
Manufacturer and Model	John Deere PowerTech™ PSS 6090	
Non-Road Emission Standards	EPA Final Tier 4/EU Stage IV	
Configuration	Inline 6 series turbocharger with exhaust gas recirculation (EGR) and selective catalytic reduction (SCR)	
Valves per Cylinder	4	
Displacement	9.0 L (549 cu. in.)	
Net Peak Power (ISO 9249)	239 kW (321 hp) at 1,900 rpm	
Net Peak Torque (ISO 9249)	1543 Nm (1,138 lb.-ft.)	
Aspiration	Turbocharged and charge air cooled	
Fuel System	High-pressure common rail, with 10- and 2-micron filtration and water separator	
Cold-Start Aid	Optional ether start and block heater (110 and 220 volt, depending on location); factory-option diesel-fired coolant heater	
Cooling		
Engine Cooling	Liquid cooled with single-pass radiator, remote pressurized coolant tank, and charge air cooler	
Powertrain		
Transmission	8-speed forward, 4-speed reverse, countershaft/planetary type with integral retarder and torque-proportioning differential	
Retarder	Integral, gear dependent, hydrodynamic, oil-to-air cooled, variable, fully automatic	
Differential	Torque-proportioning, planetary-type, interaxle differential lock (IDL) with multi-disc clutch	
Output Torque Split	32% front / 68% rear	
Shift Controls	Fully automatic, electronically modulated powershift, load-speed adaptive with gear-skip and gear-hunting protection	
Operator Interface	Push-button F-N-R, selectable speed- and gear-range limits, selectable retarder aggressiveness, downhill-descent control, and gear-hold	
Speeds	<i>Forward</i>	<i>Reverse</i>
Gear 1	6 km/h (3.7 mph)	6 km/h (3.7 mph)
Gear 2	8 km/h (5.2 mph)	8 km/h (5.2 mph)
Gear 3	11 km/h (6.8 mph)	11 km/h (6.8 mph)
Gear 4	16 km/h (9.9 mph)	16 km/h (9.9 mph)
Gear 5	23 km/h (14.3 mph)	—
Gear 6	32 km/h (19.9 mph)	—
Gear 7	45 km/h (28.0 mph)	—
Gear 8	55 km/h (34.2 mph)	—
Axles		
Differential	Helical transfer gears, spiral bevel, hydraulically actuated multi-disc cross-axle differential lock (CDL)	
Final Drive	Extreme-duty mid-board-mounted planetary standard; cooled and filtered oil optional	
Brake System		
Service	Dual-circuit, hydraulically actuated, wet multi-disc brakes with optional axle cooling and filtration system	
Parking	Spring-applied hydraulically released, driveline-mounted, dry-disc with self-adjusting wear pad	
Auxiliary	Fully automatic; transmission mounted, gear dependent; hydrodynamic retarder with selectable levels	
Hydraulics		
Type	Pressure-compensated load-sensing (PCLS), variable-displacement axial-piston main pump	
Secondary Steering Pump	Ground-driven gear pump with hydraulic unloader valve	
Dump Cylinders	Dual-acting, single-stage with heat-treated, chrome-plated, and polished cylinder rods; hardened steel replaceable bushings and pivot pins	
Cycle Time		
Power Down	7 sec.	
Raise Time	12 sec.	
Electrical		
Voltage	24 volt	
Number of Batteries	2 x 12 volt	
Battery Capacity	1,400-CCA batteries (2)	
Alternator	28 volt / 100 amp; optional 130 amp	
Steering System		
Type	2 hydrostatically actuated, double-acting hydraulic cylinders; ground-driven secondary steering pump	
Angle	45 deg. side to side	
Lock-to-Lock Turns	4.2	
Suspension		
Front	Semi-independent leading A-frame geometry with transverse link for lateral restraint and self-leveling oil-filled struts with inclusive nitrogen-charged accumulators	
Rear	Load-equalizing, pivoting walking beams with laminated suspension blocks, tri-link geometry, and transverse links for lateral restraint	
Dump Body		
Type	High-strength steel	
Capacity		
Struck	11.7 m ³ (15.3 cu. yd.)	
Heaped at 2:1 ISO 6483 Ratio	15.0 m ³ (19.6 cu. yd.)	
With Optional Tailgate	15.9 m ³ (20.8 cu. yd.)	
Maximum Dump Angle	70 deg.	
Heater	Body ducted for optional exhaust heating	

260E SPECIFICATIONS



Tires/Wheels	260E
Size and Type	23.5R25 radial earthmovers standard / 750/65R25 optional

Serviceability	
Ground-Level Service	

Fluids and Filters	Ground-level checks of engine, transmission, hydraulic oil, axle oil, and coolant levels; ground-level replacement of engine, fuel, and optional axle filters	
Coolers	Standard swing-out coolers for easy cleaning; optional reversing fans	
Fluid Sampling	Standard fluid-sampling ports; optional quick-service ports	

Refill Capacities		
--------------------------	--	--

Fuel Tank	496 L (131 gal.)	
Diesel Exhaust Fluid (DEF) Tank	48 L (12.7 gal.)	
Engine Oil with Filter	34 L (9.0 gal.)	
Engine Coolant	48 L (12.7 gal.)	
Transmission Fluid	60 L (15.9 gal.)	
Hydraulic Reservoir	113 L (30.0 gal.)	
Axle Fluid	<i>Standard capacity</i>	<i>Capacity with cooling option</i>
Front	37 L (9.8 gal.)	Add 5.1 L (1.3 gal.)
Mid	37 L (9.8 gal.)	Add 4.2 L (1.1 gal.)
Rear	37 L (9.8 gal.)	Add 4.5 L (1.2 gal.)

Operating Weights		
--------------------------	--	--

With Standard Equipment	<i>Empty</i>	<i>Loaded</i>
Front	12 600 kg (27,778 lb.)	15 842 kg (34,926 lb.)
Middle	4947 kg (10,906 lb.)	15 422 kg (34,000 lb.)
Rear	4947 kg (10,906 lb.)	15 422 kg (34,000 lb.)
Total	22 494 kg (49,591 lb.)	46 686 kg (102,925 lb.)
Rated Payload	24 192 kg (53,334 lb.)	

Optional Components	
----------------------------	--

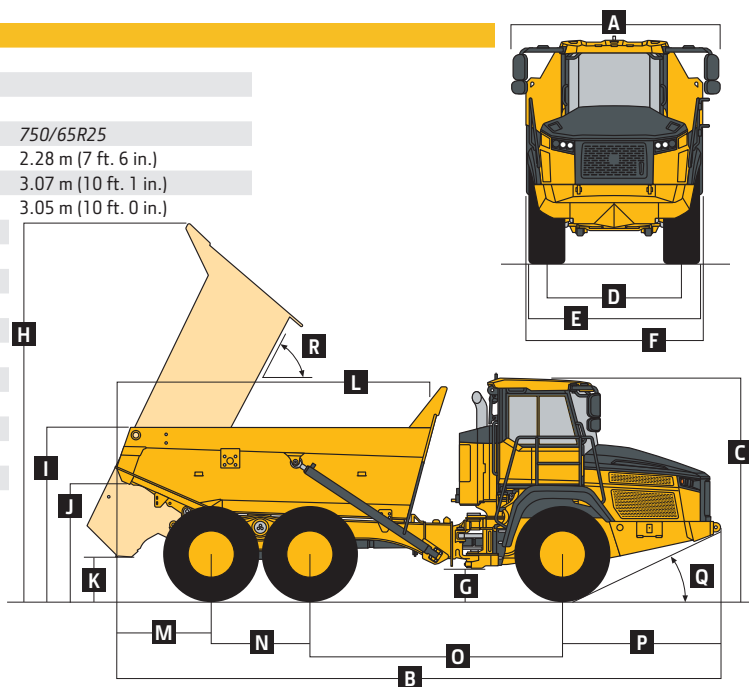
Dump-Body Liner (steel)	798 kg (1,759 lb.)
Tailgate	637 kg (1,404 lb.)
750/65R25 Tires	624 kg (1,376 lb.)

Operating Dimensions	
-----------------------------	--

Turning Circle Radius	
Inside	4.27 m (14 ft. 0 in.)
Outside	8.02 m (26 ft. 4 in.)

Machine Dimensions	
---------------------------	--

A Width with Mirrors in Operating Position	3.49 m (11 ft. 5 in.)	
B Length	9.74 m (31 ft. 11 in.)	
C Height	3.66 m (12 ft. 0 in.)	
Tire Options	<i>23.5R25</i>	<i>750/65R25</i>
D Tread Width	2.28 m (7 ft. 6 in.)	2.28 m (7 ft. 6 in.)
E Width Over Tires	2.87 m (9 ft. 5 in.)	3.07 m (10 ft. 1 in.)
F Width Over Fenders	2.87 m (9 ft. 5 in.)	3.05 m (10 ft. 0 in.)
G Ground Clearance	0.49 m (19.4 in.)	
H Dump Body Height, Dump Position	6.29 m (20 ft. 8 in.)	
I Dump Body Side Rail Height	2.85 m (9 ft. 4 in.)	
J Dump Body Dump Lip Height, Transport Position	2.07 m (6 ft. 10 in.)	
K Dump Body Ground Clearance, Dump Position	0.97 m (3 ft. 2 in.)	
L Dump Body Length	5.15 m (16 ft. 11 in.)	
M Rear Axle Centerline to Rear of Dump Body	1.14 m (3 ft. 9 in.)	
N Mid Axle to Rear Axle Centerline	1.67 m (5 ft. 6 in.)	
O Front Axle to Mid Axle Centerline	4.26 m (14 ft. 0 in.)	
P Front Axle Centerline to Front of Machine	2.67 m (8 ft. 9 in.)	
Q Approach Angle	24 deg.	
R Maximum Dump Angle	70 deg.	



Shipping Dimensions	260E
----------------------------	-------------

Overall Height (suspension lowered 75 mm [3 in.])	3.59 m (11 ft. 9 in.)
Overall Length	9.74 m (31 ft. 11 in.)
Tire Options	<i>23.5R25</i> <i>750/65R25</i>
Overall Width	
Mirrors Folded In	3.07 m (10 ft. 1 in.) 3.12 m (10 ft. 3 in.)
Tailgate Installed	3.26 m (10 ft. 8 in.) 3.26 m (10 ft. 8 in.)



310E SPECIFICATIONS

Engine	310E	
Manufacturer and Model	John Deere PowerTech™ PSS 6090	
Non-Road Emission Standards	EPA Final Tier 4/EU Stage IV	
Configuration	Inline 6 series turbocharger with exhaust gas recirculation (EGR) and selective catalytic reduction (SCR)	
Valves per Cylinder	4	
Displacement	9.0 L (549 cu. in.)	
Net Peak Power (ISO 9249)	264 kW (354 hp) at 1,900 rpm	
Net Peak Torque (ISO 9249)	1615 Nm (1,191 lb.-ft.)	
Aspiration	Turbocharged and charge air cooled	
Fuel System	High-pressure common rail, with 10- and 2-micron filtration and water separator	
Cold-Start Aid	Optional ether start and block heater (110 and 220 volt, depending on location); factory-option diesel-fired coolant heater	
Cooling		
Engine Cooling	Liquid cooled with single-pass radiator, remote pressurized coolant tank, and charge air cooler	
Powertrain		
Transmission	8-speed forward, 4-speed reverse, countershaft/planetary type with integral retarder and torque-proportioning differential	
Retarder	Integral, gear dependent, hydrodynamic, oil-to-air cooled, variable, fully automatic	
Differential	Torque-proportioning, planetary-type, interaxle differential lock (IDL) with multi-disc clutch	
Output Torque Split	32% front / 68% rear	
Shift Controls	Fully automatic, electronically modulated powershift, load-speed adaptive with gear-skip and gear-hunting protection	
Operator Interface	Push-button F-N-R, selectable speed- and gear-range limits, selectable retarder aggressiveness, downhill-descent control, and gear-hold	
Speeds	<i>Forward</i>	<i>Reverse</i>
Gear 1	6 km/h (3.7 mph)	6 km/h (3.7 mph)
Gear 2	8 km/h (5.2 mph)	8 km/h (5.2 mph)
Gear 3	11 km/h (6.8 mph)	11 km/h (6.8 mph)
Gear 4	16 km/h (9.9 mph)	16 km/h (9.9 mph)
Gear 5	23 km/h (14.3 mph)	—
Gear 6	32 km/h (19.9 mph)	—
Gear 7	45 km/h (28.0 mph)	—
Gear 8	55 km/h (34.2 mph)	—
Axles		
Differential	Helical transfer gears, spiral bevel, hydraulically actuated multi-disc cross-axle differential lock (CDL)	
Final Drive	Extreme-duty mid-board-mounted planetary standard; cooled and filtered oil optional	
Brake System		
Service	Dual-circuit, hydraulically actuated, wet multi-disc brakes with optional axle cooling and filtration system	
Parking	Spring-applied hydraulically released, driveline-mounted, dry-disc with self-adjusting wear pad	
Auxiliary	Fully automatic; transmission mounted, gear dependent; hydrodynamic retarder with selectable levels	
Hydraulics		
Type	Pressure-compensated load-sensing (PCLS), variable-displacement axial-piston main pump	
Secondary Steering Pump	Ground-driven gear pump with hydraulic unloader valve	
Dump Cylinders	Dual-acting, single-stage with heat-treated, chrome-plated, and polished cylinder rods; hardened steel replaceable bushings and pivot pins	
Cycle Time		
Power Down	7 sec.	
Raise Time	12 sec.	
Electrical		
Voltage	24 volt	
Number of Batteries	2 x 12 volt	
Battery Capacity	1,400-CCA batteries (2)	
Alternator	28 volt / 100 amp; optional 130 amp	
Steering System		
Type	2 hydrostatically actuated, double-acting hydraulic cylinders; ground-driven secondary steering pump	
Angle	45 deg. side to side	
Lock-to-Lock Turns	4.2	
Suspension		
Front	Semi-independent leading A-frame geometry with transverse link for lateral restraint and self-leveling oil-filled struts with inclusive nitrogen-charged accumulators	
Rear	Load-equalizing, pivoting walking beams with laminated suspension blocks, tri-link geometry, and transverse links for lateral restraint	
Dump Body		
Type	High-strength steel	
Capacity		
Struck	13.7 m ³ (17.9 cu. yd.)	
Heaped at 2:1 ISO 6483 Ratio	17.5 m ³ (22.9 cu. yd.)	
With Optional Tailgate	18.3 m ³ (23.9 cu. yd.)	
Maximum Dump Angle	70 deg.	
Heater	Body ducted for optional exhaust heating	

310E SPECIFICATIONS



Tires/Wheels	310E
Size and Type	23.5R25 radial earthmovers standard / 750/65R25 optional

Serviceability

Ground-Level Service

Fluids and Filters	Ground-level checks of engine, transmission, hydraulic oil, axle oil, and coolant levels; ground-level replacement of engine, fuel, and optional axle filters	
Coolers	Standard swing-out coolers for easy cleaning; optional reversing fans	
Fluid Sampling	Standard fluid-sampling ports; optional quick-service ports	

Refill Capacities

Fuel Tank	496 L (131 gal.)	
Diesel Exhaust Fluid (DEF) Tank	48 L (12.7 gal.)	
Engine Oil with Filter	34 L (9.0 gal.)	
Engine Coolant	48 L (12.7 gal.)	
Transmission Fluid	60 L (15.9 gal.)	
Hydraulic Reservoir	113 L (30.0 gal.)	
Axle Fluid	<i>Standard capacity</i>	<i>Capacity with cooling option</i>
Front	37 L (9.8 gal.)	Add 5.1 L (1.3 gal.)
Mid	37 L (9.8 gal.)	Add 4.2 L (1.1 gal.)
Rear	37 L (9.8 gal.)	Add 4.5 L (1.2 gal.)

Operating Weights

With Standard Equipment	<i>Empty</i>	<i>Loaded</i>
Front	12 555 kg (27,679 lb.)	15 202 kg (33,515 lb.)
Middle	5146 kg (11,345 lb.)	17 885 kg (39,430 lb.)
Rear	5146 kg (11,345 lb.)	17 885 kg (39,430 lb.)
Total	22 847 kg (50,369 lb.)	50 972 kg (112,374 lb.)
Rated Payload	28 125 kg (62,005 lb.)	

Optional Components

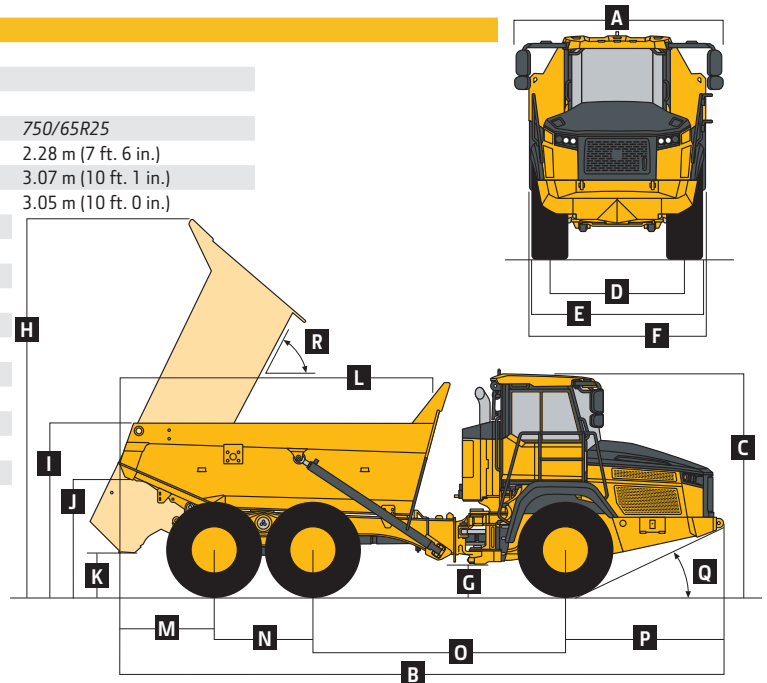
Dump-Body Liner (steel)	864 kg (1,905 lb.)
Tailgate	640 kg (1,411 lb.)
750/65R25 Tires	624 kg (1,376 lb.)

Operating Dimensions

Turning Circle Radius	
Inside	4.27 m (14 ft. 0 in.)
Outside	8.02 m (26 ft. 4 in.)

Machine Dimensions

A Width with Mirrors in Operating Position	3.49 m (11 ft. 5 in.)	
B Length	10.16 m (33 ft. 4 in.)	
C Height	3.66 m (12 ft. 0 in.)	
Tire Options	23.5R25	750/65R25
D Tread Width	2.28 m (7 ft. 6 in.)	2.28 m (7 ft. 6 in.)
E Width Over Tires	2.87 m (9 ft. 5 in.)	3.07 m (10 ft. 1 in.)
F Width Over Fenders	2.87 m (9 ft. 5 in.)	3.05 m (10 ft. 0 in.)
G Ground Clearance	0.49 m (19.4 in.)	
H Dump Body Height, Dump Position	6.33 m (20 ft. 9 in.)	
I Dump Body Side Rail Height	2.93 m (9 ft. 7 in.)	
J Dump Body Dump Lip Height, Transport Position	2.26 m (7 ft. 5 in.)	
K Dump Body Ground Clearance, Dump Position	0.63 m (24.7 in.)	
L Dump Body Length	5.59 m (18 ft. 4 in.)	
M Rear Axle Centerline to Rear of Dump Body	1.56 m (5 ft. 1 in.)	
N Mid Axle to Rear Axle Centerline	1.67 m (5 ft. 6 in.)	
O Front Axle to Mid Axle Centerline	4.26 m (14 ft. 0 in.)	
P Front Axle Centerline to Front of Machine	2.67 m (8 ft. 9 in.)	
Q Approach Angle	24 deg.	
R Maximum Dump Angle	70 deg.	



Shipping Dimensions

Overall Height (suspension lowered 75 mm [3 in.])	3.59 m (11 ft. 9 in.)	
Overall Length	10.16 m (33 ft. 4 in.)	
Tire Options	23.5R25	750/65R25
Overall Width		
Mirrors Folded In	3.07 m (10 ft. 1 in.)	3.12 m (10 ft. 3 in.)
Tailgate Installed	3.26 m (10 ft. 8 in.)	3.26 m (10 ft. 8 in.)

Additional equipment

Key: ● Standard ▲ Optional or special See your John Deere dealer for further information.

260E	310E	Engine
●	●	Meets EPA Final Tier 4 (FT4)/EU Stage IV emissions
●	●	John Deere PowerTech™ PSS 6090 — 9.0L (549 cu. in.) inline 6
●	●	Wet-sleeve cylinder liners
●	●	Variable-geometry turbocharger (VGT)
●	●	External cooled exhaust gas recirculation (EGR)
●	●	Dual-element air cleaner with dust-ejector valve
●	●	Precleaner
●	●	High-pressure common-rail fuel injection
●	●	Fuel/water separator
●	●	Ground-level fueling and diesel exhaust fluid (DEF) fill
▲	▲	Fast fill
●	●	Serpentine drive belt with automatic tensioner
▲	▲	Ether start aid (recommended below -1 deg. C [30 deg. F])
▲	▲	Block heater (recommended below -18 deg. C [0 deg. F])
▲	▲	Diesel-fired coolant heater (DFCH) (required below -25 deg. C [-13 deg. F])
●	●	Programmable auto-shutdown
●	●	Automatic turbo cool-down/shutdown timer
●	●	Flat-black exhaust stack
▲	▲	Chrome exhaust stack
▲	▲	Severe-duty fuel filter
▲	▲	Severe-duty fuel filter with heater
		Cooling
●	●	Dual hydraulically driven, side-mounted fans
●	●	Side-mounted radiator, charge-air cooler, air-conditioner condenser, fuel cooler, transmission cooler, and hydraulic cooler
●	●	Swing-out coolers
●	●	Integral engine oil cooler
●	●	Remote pressurized coolant reservoir
●	●	John Deere Cool-Gard™ II long-life engine coolant
●	●	Fan guard
▲	▲	Reversing fans

260E	310E	Powertrain
●	●	Lockup torque converter
●	●	Adaptive shift control
●	●	Gear-hold switch
●	●	Integral transmission input retarder
●	●	Automatic engaging retarder with selectable aggressiveness
●	●	Countershaft transmission with integral interaxle differential
●	●	Planetary interaxle locking differential with 33-percent/67-percent nominal output torque split
●	●	Ground-level transmission-oil-level sight glass
●	●	Transmission diagnostic ports
●	●	Remote-mounted spin-on transmission oil filters
●	●	Hydraulically locking differentials
●	●	Differential lock floor switch
●	●	Automatic traction control with manual override
●	●	Wet-disc brakes on all 3 axles
●	●	Spring-applied, hydraulically released, dry-disc park brake
▲	▲	Axle filtration with remote-mounted filter
●	●	Axle oil-temperature sensing
		Electrical System
●	●	24-volt system voltage
●	●	100-amp alternator
▲	▲	130-amp alternator
●	●	Solid-state electrical distribution system
●	●	Battery disconnect
●	●	Batteries, 2 x 1,400 CCA
●	●	Drive lights
●	●	Stair and service lights
▲	▲	Deluxe halogen work lights, front and rear
▲	▲	Deluxe LED work lights, front and rear
●	●	LED rear turn signals/brake lights
●	●	Electric horn
●	●	Reverse alarm
▲	▲	Beacon/strobe light
▲	▲	24-volt to 12-volt 15-amp converter
▲	▲	24-volt to 12-volt 25-amp converter

Net engine power is with standard equipment including air cleaner, exhaust system, alternator, and cooling fan at test conditions specified per ISO 9249. Specifications and design subject to change without notice. Wherever applicable, specifications are in accordance with ISO standards. Except where otherwise noted, these specifications are based on units with standard equipment, 23.5R25 radial earthmover tires, ROPS cabs, full fuel tanks, and 79-kg (175 lb.) operators.